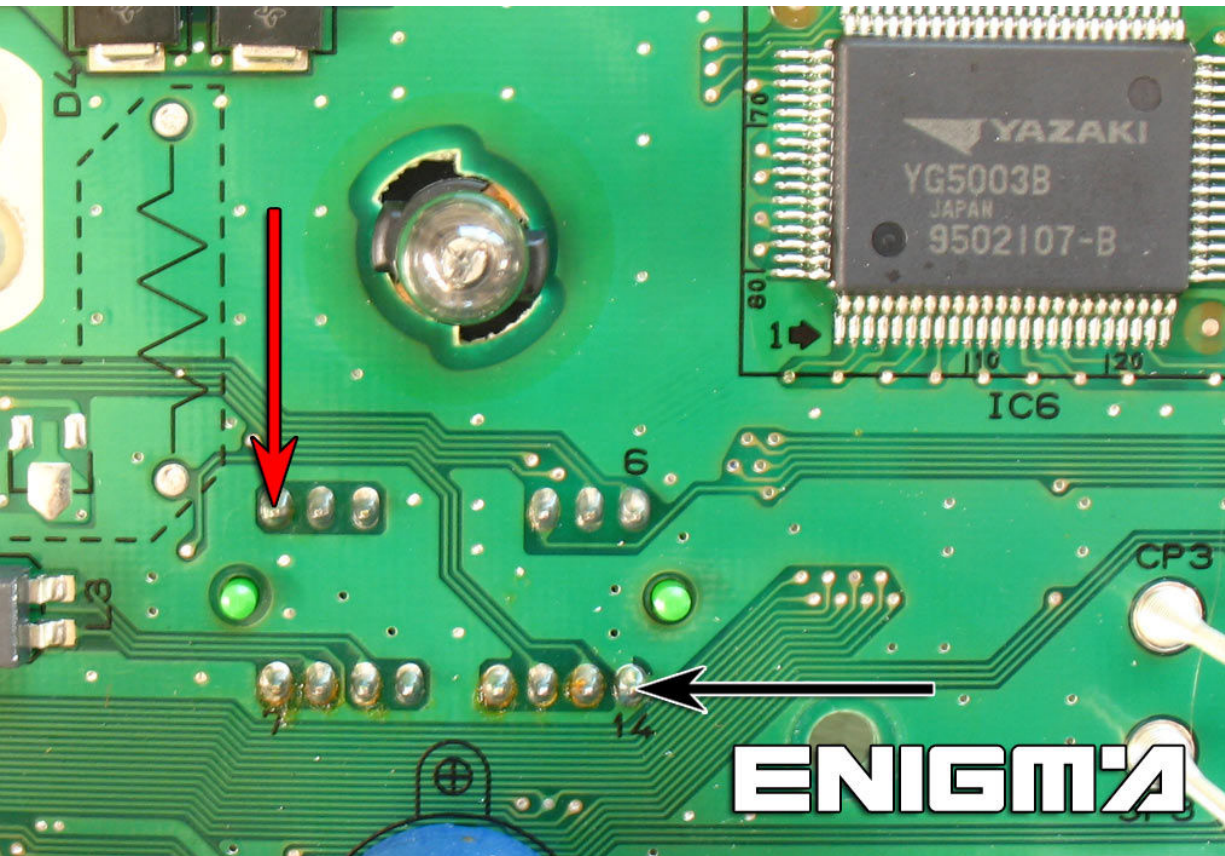


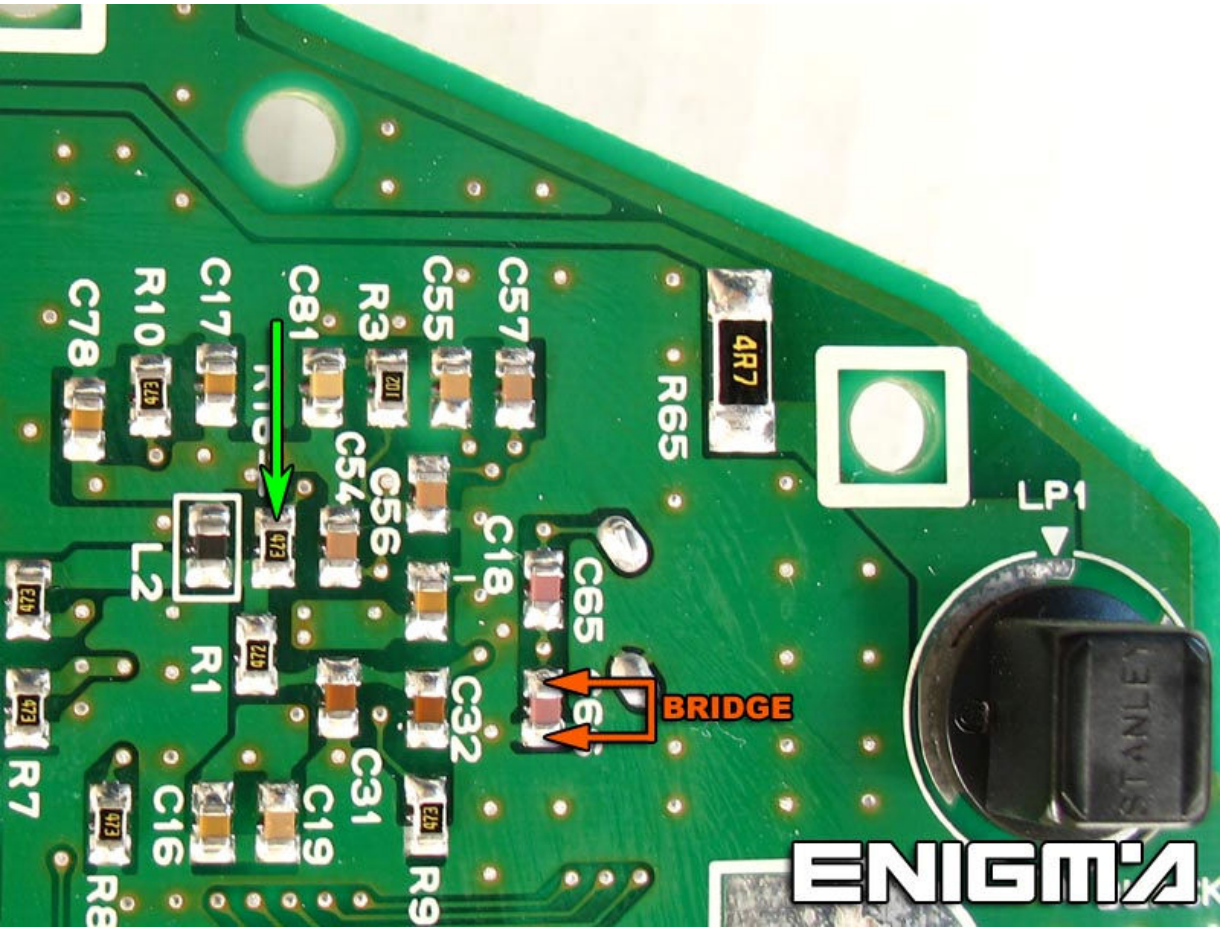
VOLVO S80 912



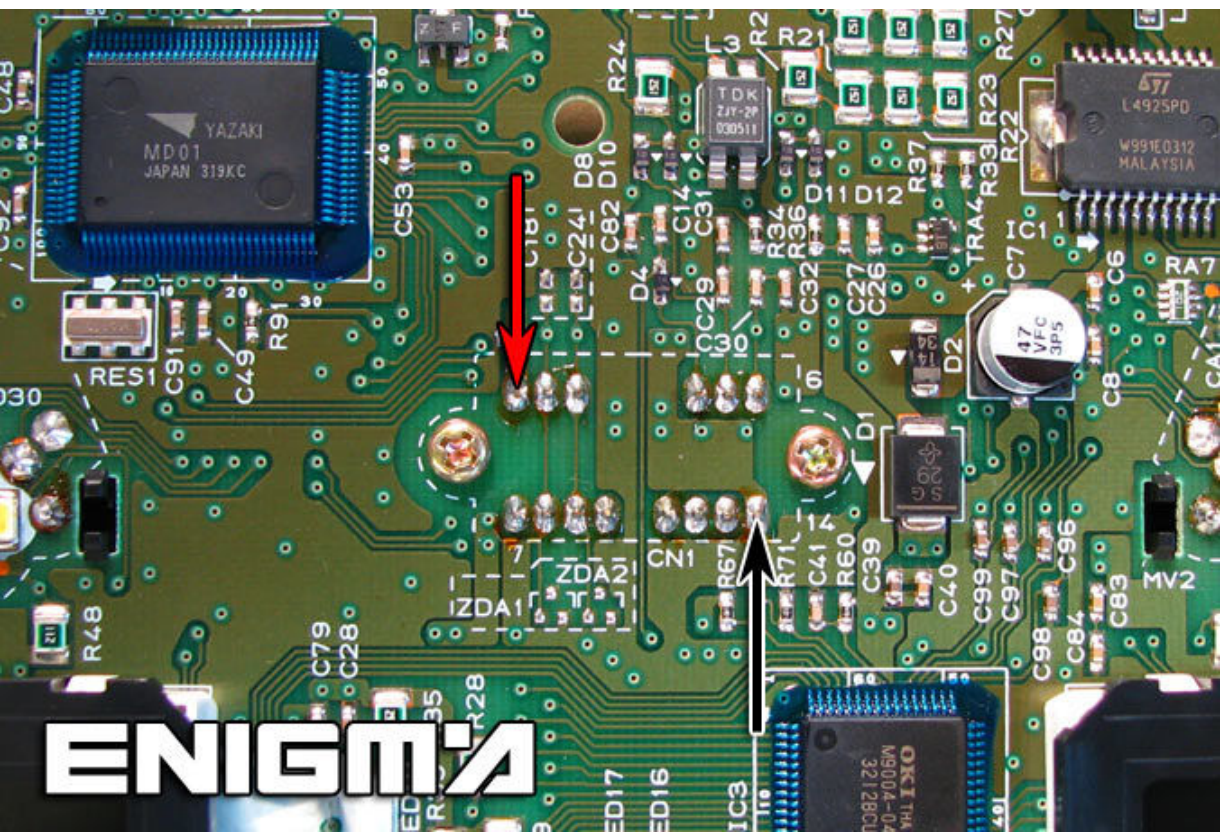
NEWER VOLVO MODELS HAVE SAME MICRO INSIDE. FOR ALL THOSE MODELS WE MUST USE CABLE C12, REMOVE BACK PLASTIC COVER, AND CHECK VERSION LIKE SHOW TO US NEXT INSTRUCTIONS CONNECTING OR SOLDERING CABLE LEADS ACORDING TO COLOURS AS SHOWN ON PHOTOS BELOW:

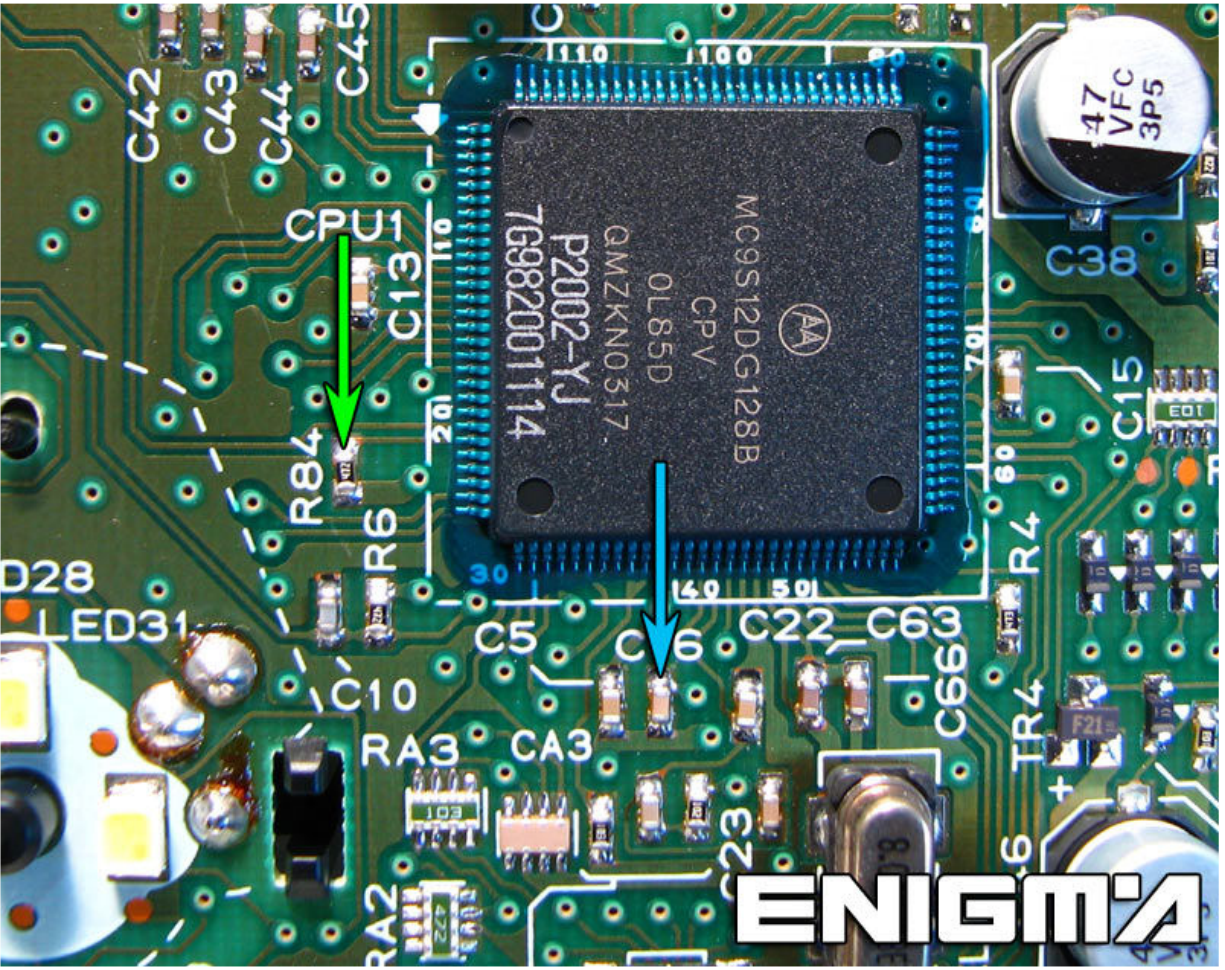
VERSION 1:





VERSION 2:





VERSION 3:

