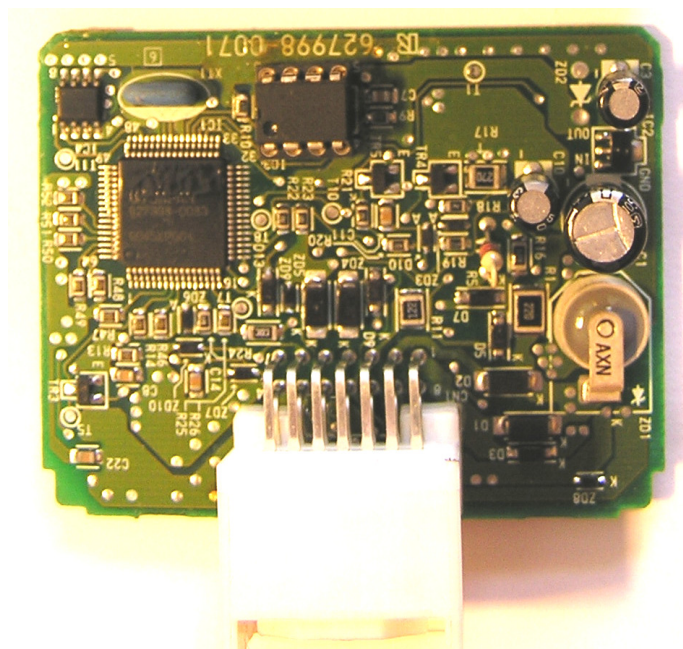
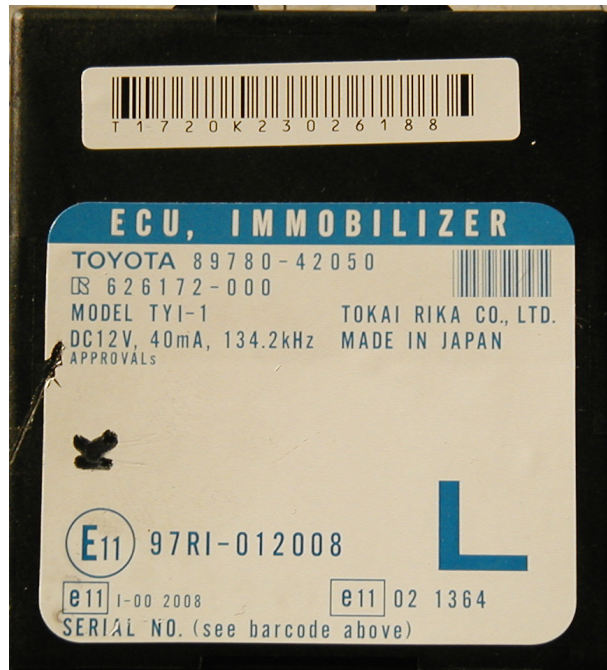


S4.2 CarProg LEXUS immobiliser manual

Lexus model	Year	Transponder key type	Instruction
ES300	1998-2001	TEX	S4.2.1
	2002-2004	TEX	S4.2.2
ES330	2004-	TEX/CR	S4.2.3
GS300	1998-	TEX	S4.2.1
GS300	1998-2000	TEX	S4.2.2
GS400	2001-	TEX	S4.2.1
GX470	2004-	TEX/CR	S4.2.3
IS200	2000-2004	TEX	S4.2.2
IS300	2000-2004	TEX	S4.2.2
LS200	1997-1999	TEX	S4.2.1
	1999-	TEX	S4.2.2
LS400	1997-1999	TEX	S4.2.1
	1999-	TEX	S4.2.2
LX450	1997-1999	TEX	S4.2.1
	1999-	TEX	S4.2.2
LX470	1999-2004	TEX	S4.2.2
	2005-	TEX/CR	S4.2.3
RX300	1999-	TEX	S4.2.2
RX330	1999-	TEX/CR	S4.2.3
SC300	1997-1999	TEX	S4.2.1
	1999-	TEX	S4.2.2
SC400	1997-1999	TEX	S4.2.1
	1999-	TEX	S4.2.2
SC430	2004-	TEX/CR	S4.2.3

S4.2.1 Older Lexus immobiliser system with separated immo box and Texas transponder (4D by Silca). Immobiliser box are located near to ignition key. Usually this is black or brown box marked "immobilizer" or "134.2 kHz".



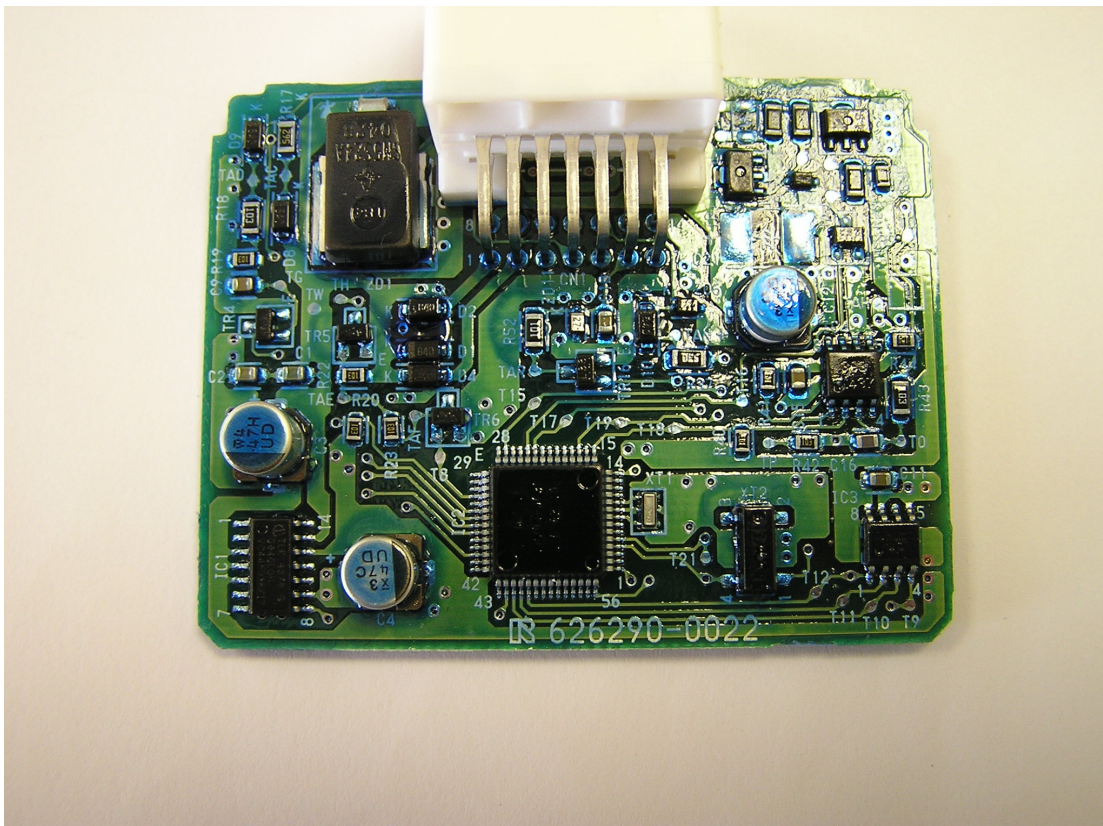
Remove immobiliser ECU from the car and open it. Find 93C66 EEPROM in DIP package. Use **A5** or **A4** adapter and follow CarProg instruction to program transponder key. **Short quartz resonator for in-circuit EEPROM programming or remove 93C66 from immobiliser board.**

S4.2.2 Lexus immobiliser system with transponder antenna and AMP unit on the ignition key and motor ECU. Used in 1999 – 2003 Lexus cars.



Transponder information is stored in motor ECU. Remove motor ECU from the car, open it and find 93C56 EEPROM marked IC900
Use **A6** or **A4** adapter and follow CarProg instruction to program transponder key. **Short quartz resonator for in-circuit EEPROM programming or remove 93C56 from ECU board.**

S4.2.3 New Lexus cars with Texas Crypto transponder (4D by Silca). Transponder key is stored in separated immobiliser unit marked "ECU IMMOBILIZER". Remove immobiliser ECU from the car, open it and find 93LC66 SMD EEPROM.



CODECARD.LT
CARPROG

Use only original factory key. With Silca 4D transponder car will not start.
Use **A6** or **A4** adapter and follow CarProg instruction to program transponder key.
Short quartz resonator for in-circuit EEPROM programming or remove 93C66 from immobiliser board.