

CarProg Audi, Mercedes Benz, VW, Volvo airbag sensors with CR16 processor programmer user manual

New type airbag sensors "crash data", airbag errors are stored in CR16 processor (80QFP package) internal EEPROM memory. With CARPROG CR16 software is possible to read and modify this information by airbag sensor connector.

VAG (Audi , VW) supported airbag sensor types:

- 4B0 959 655A
- 4B0 959 655P
- 4B0 959 655Q
- 4Z0 959 655M
- 8E0 959 655A
- 8E0 959 655B
- 8E0 959 655C
- 8E0 959 655G
- 8E0 959 655K
- 8E0 959 655J
- 8H0 959 655B
- 8P0 959 655D

How to: Try to read error memory and erase errors by OBDII diagnostic. If error codes "crash data stored" or "controller malfunction" cannot be erased by diagnostic you can try erase these errors with CARPROG CR16 software. Remove airbag sensor from the car. Open it and short to GND CR16 (80 pin QFP) processor pin 13 – like in picture. If airbag sensor hardware is different – find CR16 pin 13 and short it to GND.



Now with cable A15 connect airbag sensor – A15 **white cable** to pin 65, **brown wire** to pin 66 and **rose wire** to pin 67.

CARPROG

A15 cable connection to VAG airbag sensor

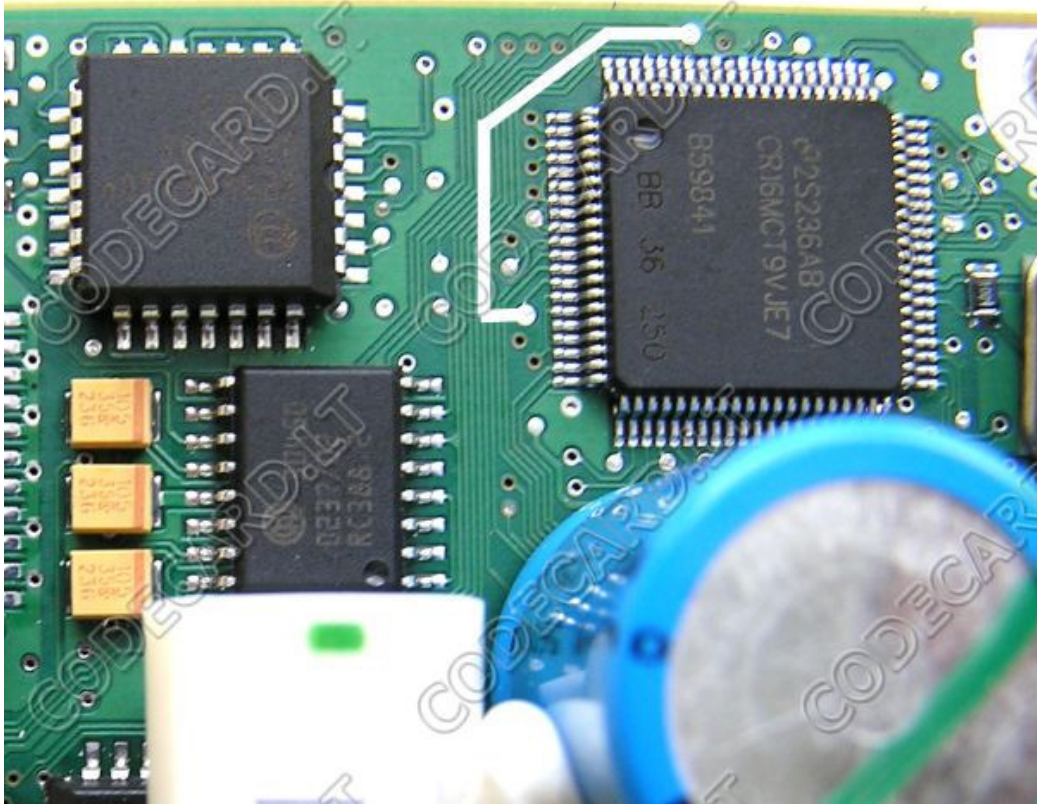


Select in CARPROG CR16 software airbag sensor type and erase "crash data".

Mercedes Benz supported airbag sensor types:

- 0 285 001 441
- 0 285 001 544
- 0 285 001 548
- 0 285 001 813
- 0 285 001 881

How to: Try to read error memory and erase errors by OBDII diagnostic. If error codes "crash data stored" or "controller malfunction" cannot be erased by diagnostic you can try erase these errors with CARPROG CR16 software. Remove airbag sensor from the car. Open it and short to GND CR16 (80 pin QFP) processor pin 13 – like in picture. If airbag sensor hardware is different – find CR16 pin 13 and short it to GND.



Now with cable A15 connect airbag sensor – A15 **white cable** to pin 1, **brown wire** to pin 84 and **rose wire** to pin 79.



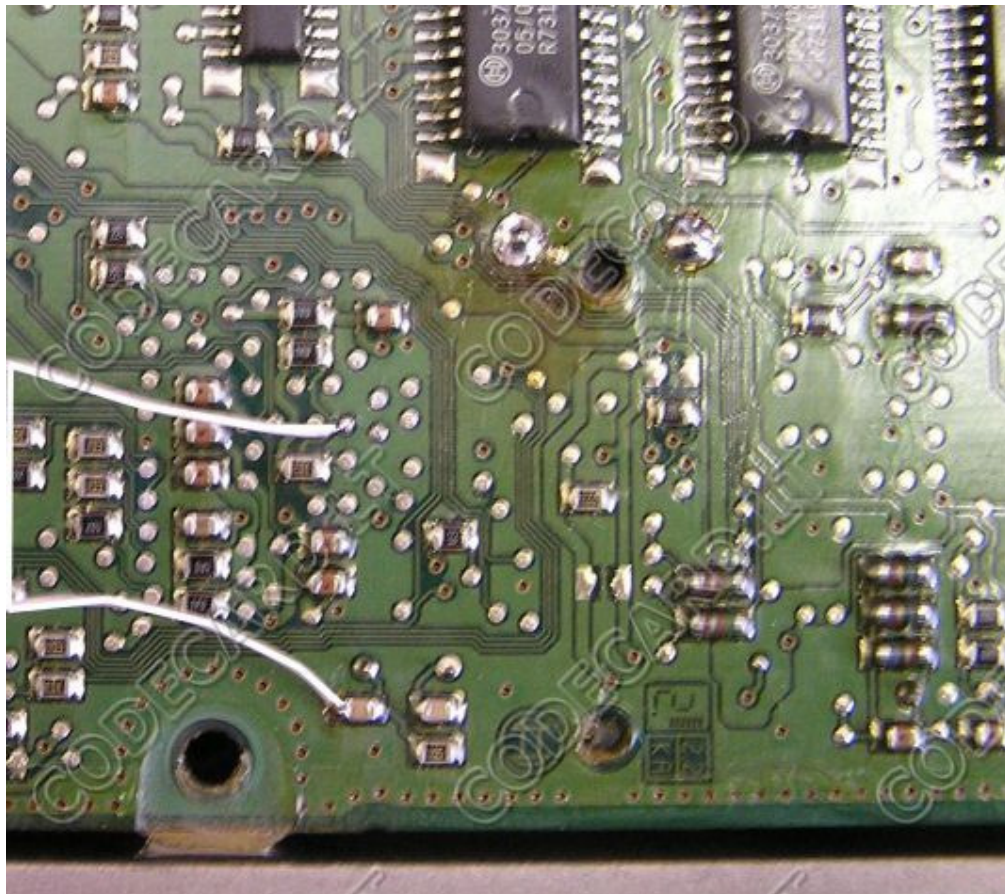
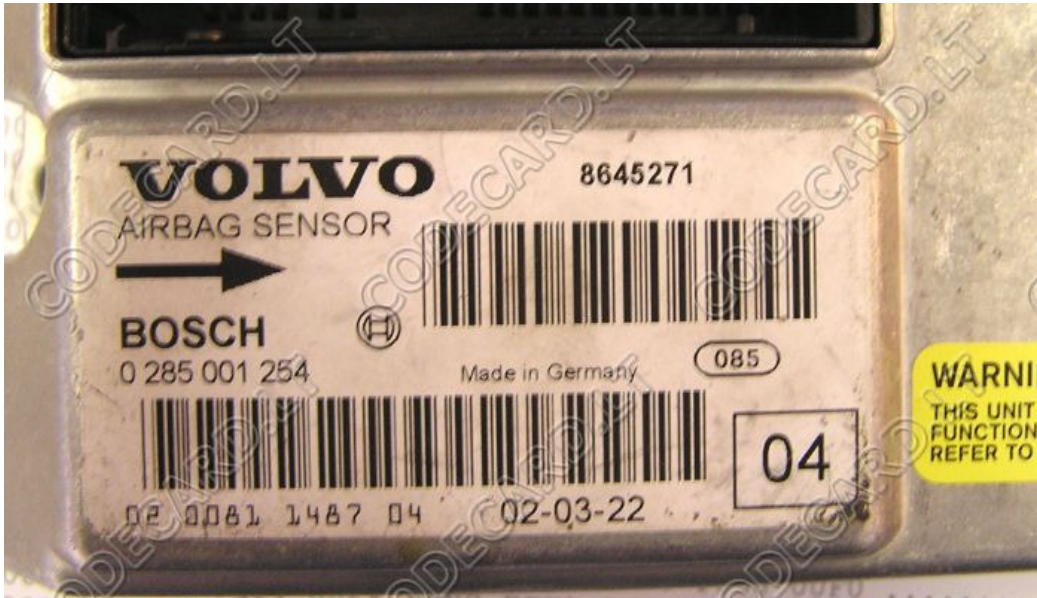
Volvo supported airbag sensor types:

- 0 285 001 456
- 0 285 001 254
- 0 285 001 447

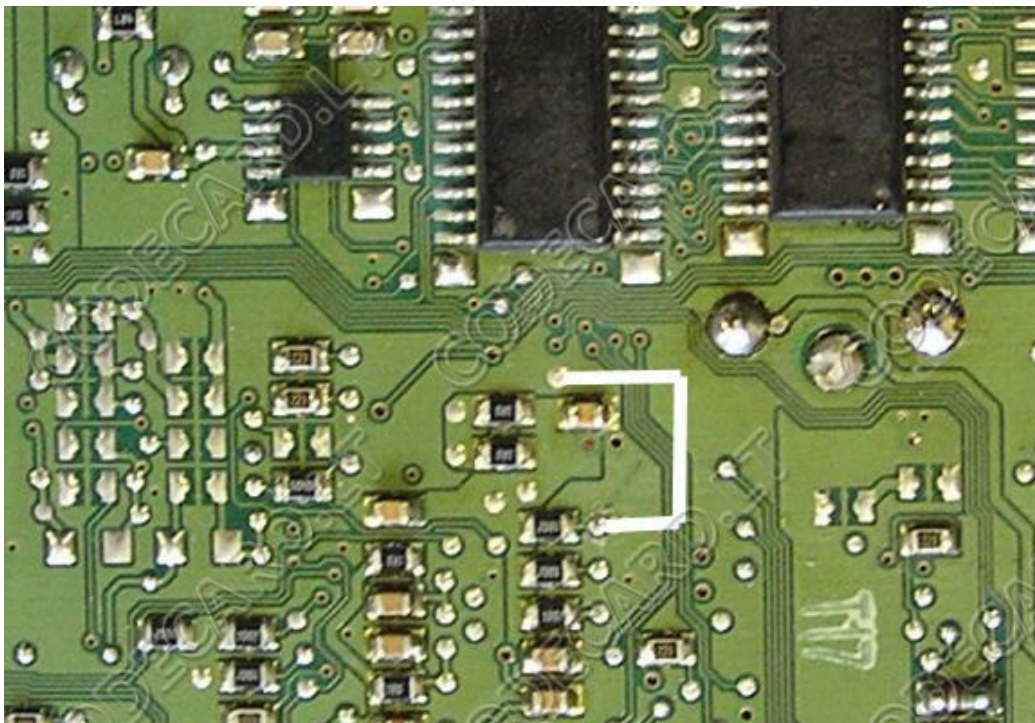
How to: Try to read error memory and erase errors by OBDII diagnostic (use VADIS tester or Launch X431). If error codes "crash data stored" or "controller malfunction" cannot be erased by diagnostic you can try erase these errors with CARPROG CR16 software. Remove airbag sensor from the car. Open it and short to GND CR16 (80 pin QFP) processor pin 13 – like in picture. If airbag sensor hardware is different – find CR16 pin 13 and short it to GND.



0 285 001 254 sensor:

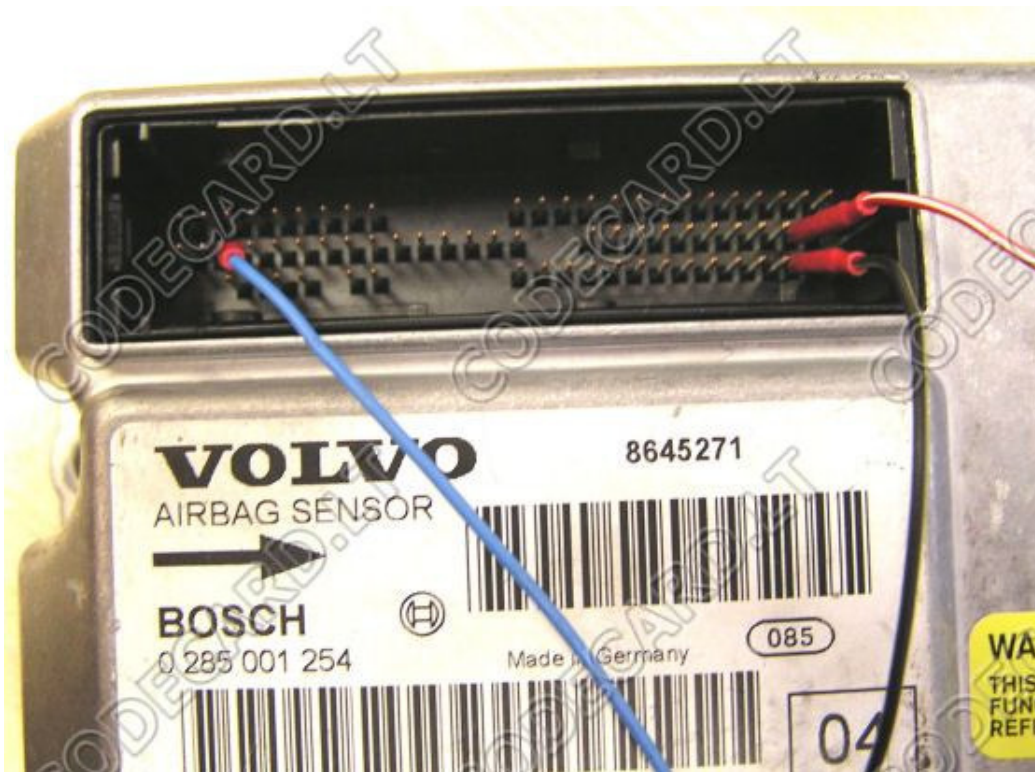


0 285 001 456 sensor:



CARPROG

Now with cable A15 connect airbag sensor – A15 **white cable** to pin 55, **brown wire** to pin 83 and **rose wire** to pin 31.



A15 cable connection to Volvo airbag sensor

White +12V to pin 55

