

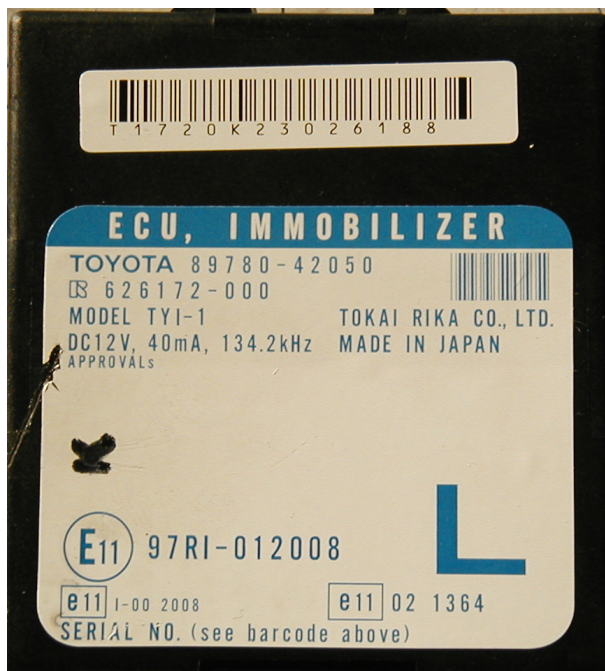
S4.1 CarProg TOYOTA immobiliser manual

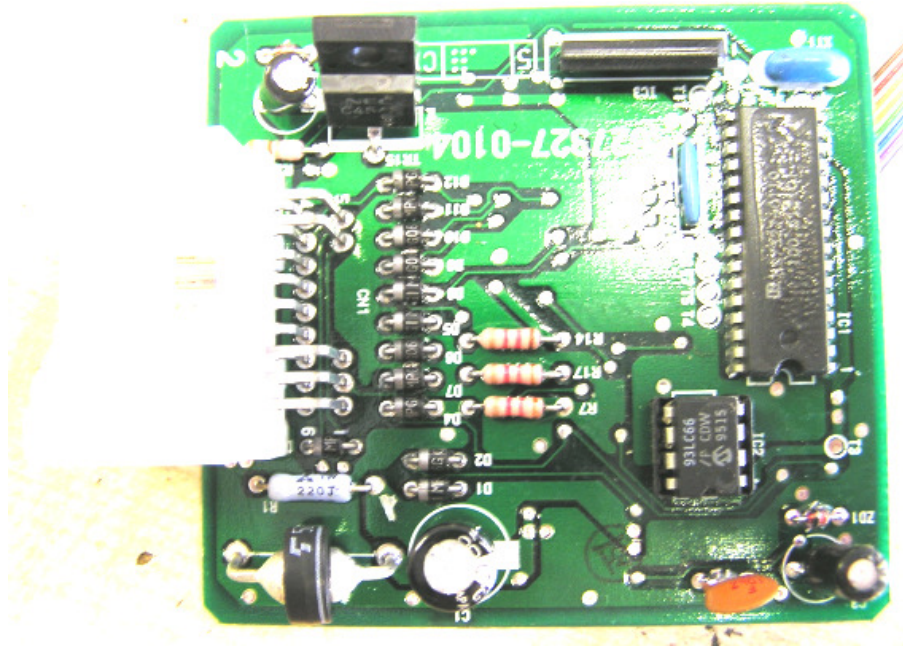
Toyota Model	Year	Transponder type	Instruction
4 RUNNER	1999-2003	TEX	S4.1.1
	2003-	TEX/CR	
ARISTO	1998-	TEX	S4.1.1
AURIS		TEX	
AVALON	1998-2003	TEX	S4.1.1
	2003-	TEX/CR	
AVENSIS	1998-1999	TEX	68HC05E6
	2000-2003	TEX/CR	68HC05E6
	2003-	TEX/CR	
AYGO	2005-	TEX/CR	
CAMRY	1997-2003	TEX	S4.1.1
	2003-	TEX/CR	IC601 93C56
CARINA	1996-	PHI	
		PHI	
		TEX	
CELICA	1996-1999	PHI	
	2000-	TEX	
CELSIOR	1998-	TEX	S4.1.1
COLORADA	1997-	TEX	S4.1.1
COROLLA	1996-1999	TEX	S4.1.1
	1999-2002	TEX	S4.1.2
	1999-2002	TEX	24C02 ECU
	1999-2002	TEX	95080 ECU
	2002-	TEX/CR	95080 ECU
	2002-	TEX/CR	24C02 ECU
ECHO	1999-	TEX	S4.1.1
ESTIMA (J)	1997-	PHI	
GAIA (J)	1999-	TEX	S4.1.1
HIACE	1997-	TEX	S4.1.1
HIGHLANDER	2001-2003	TEX	S4.1.1
	2004-	TEX/CR	
HILUX (J)	1999-	TEX	S4.1.1
IPSUM (J)	1999-	TEX	S4.1.1
LANDCRUISER, 100	1996-2000	TEX	S4.1.1
LANDCRUISER, 100	2000-2003	TEX	S4.1.2
	2003-	TEX/CR	IC601 93C56
	2004-	TEX/CR	S4.1.3
MATRIX	2004-	TEX/CR	S4.1.3
MR2	1997-	TEX	S4.1.1
PASEO	1997-	PHI	24C04
PICNIC	1996-	TEX	S4.1.1
PLAZ (J)	1999-	TEX	S4.1.1
PRADO	1996-	TEX	S4.1.1
PREVIA	1997-	PHI	24C04
	2003-	TEX/CR	S4.1.3
PRIUS	2001-2003	TEX	
	2003-	TEX/CR	

CARPROG

PROGRESS NC300	1998-	TEX	S4.1.1
RAV 4	1996-2004	TEX	S4.1.1
	2005-	TEX/CR	25080 ECU
SEQUOIA	2001-2003	TEX	S4.1.1
	2003-	TEX/CR	S4.1.3
SIENNA	1999-2003	TEX	S4.1.1
	2004-	TEX/CR	S4.1.3
SCION	2004-	TEX/CR	S4.1.3
SOLARA	1999-2003	TEX	S4.1.1
	2004-	TEX/CR	S4.1.3
STARLET	1997-	PHI	
TACOMA		TEX	S4.1.1
TARAGO	2003-	TEX/CR	
TUNDRA		TEX	S4.1.1
YARIS	1999-2002	TEX	25020 ECU
	1999-2002	TEX	25080 ECU
	2003-	TEX/CR	95080 ECU

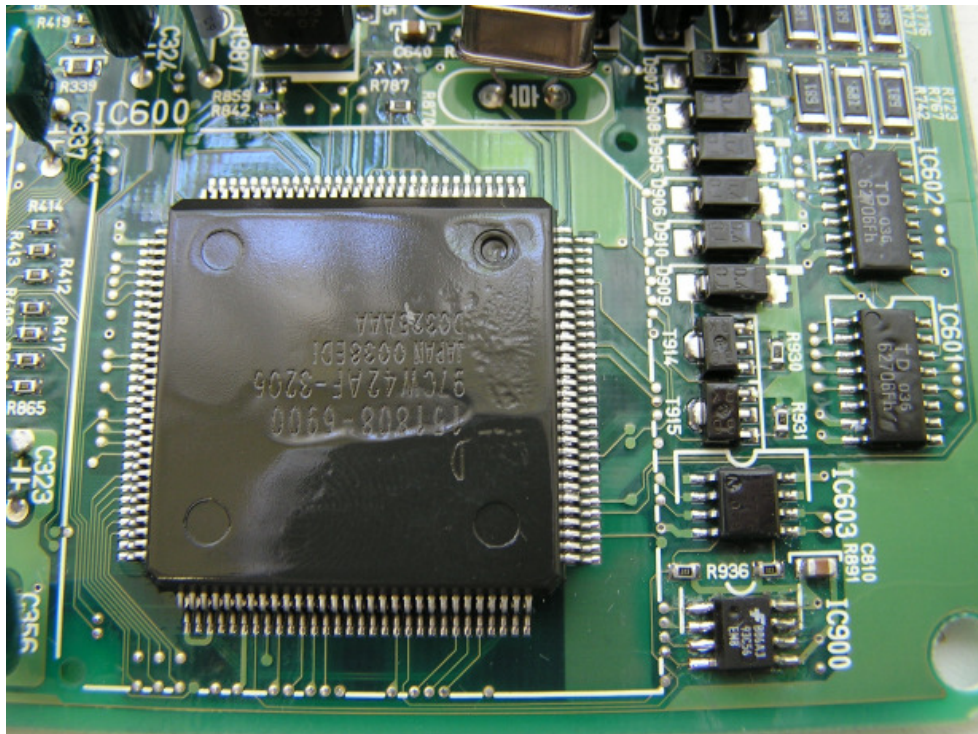
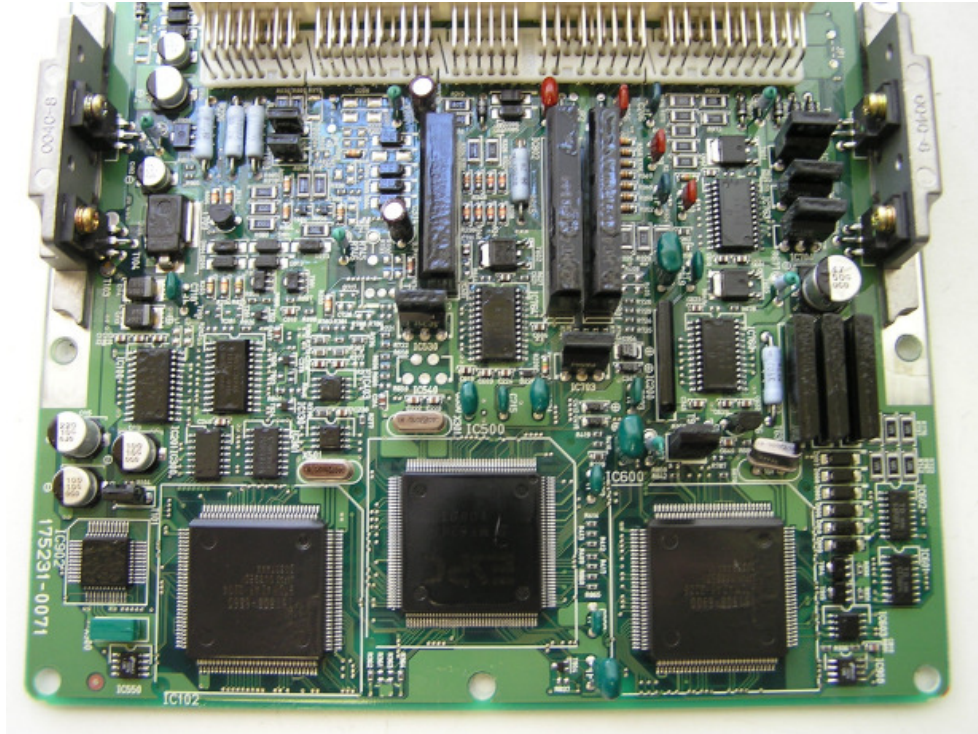
S4.1.1 Older Toyota immobiliser system with separated immo box and Texas transponder (4D by Silca). Immobiliser box are located near to ignition key. Usually this is black or brown box marked "immobilizer" or "134.2 kHz".





Remove immobiliser ECU from the car and open it. Find 93CL66 EEPROM in DIP package. Use **A5** or **A4** adapter and follow CarProg instruction to program transponder key. **Short quartz resonator for in-circuit EEPROM programming or remove 93C66 from immobiliser board.**

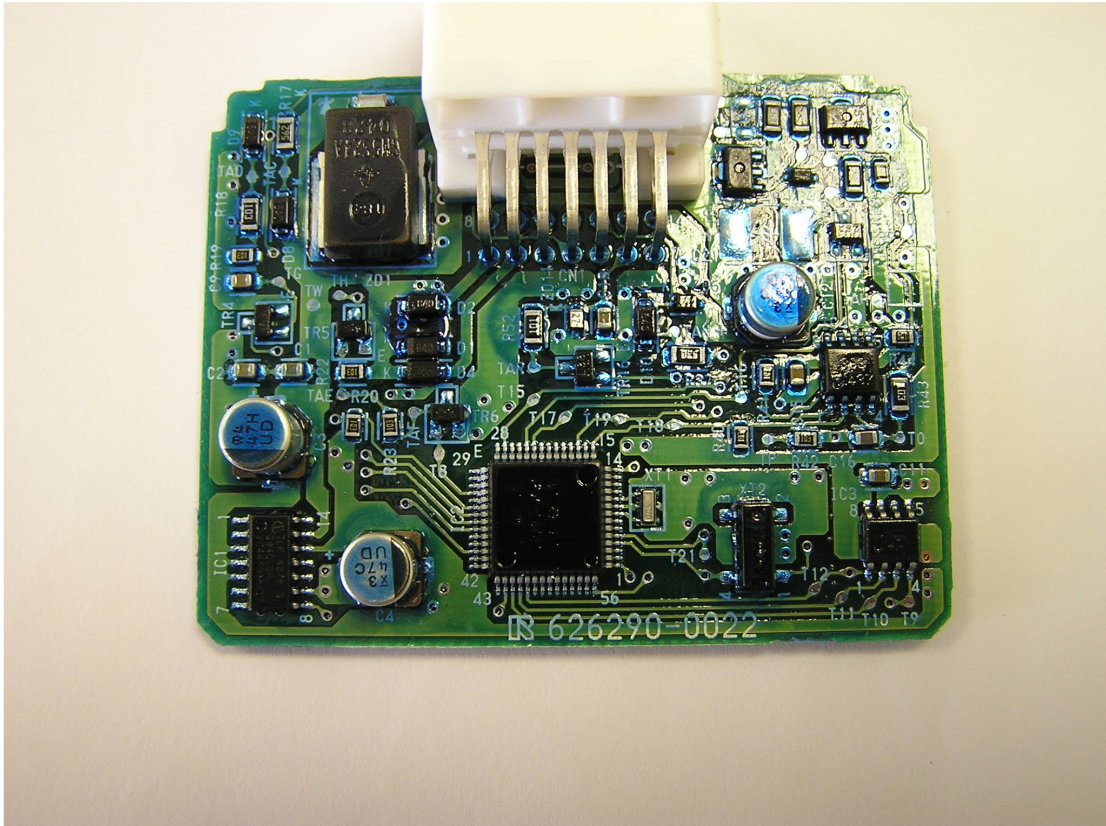
S4.1.2 Toyota immobiliser system with transponder antenna and AMP unit on the ignition key and motor ECU. Used in 1999 – 2003 Toyota/Lexus cars.



Transponder information is stored in motor ECU. Remove motor ECU from the car, open it and find 93C56 EEPROM marked IC900.
Use **A6** or **A4** adapter and follow CarProg instruction to program transponder key. **Remove 93C56 from ECU board, in-circuit programming is not stable.**

S4.1.3 Toyota cars with Texas Crypto transponder (4D by Silca). Transponder key is stored in separated immobiliser unit marked "ECU IMMOBILIZER". Remove immobiliser ECU from the car, open it and find 93LC66 SMD EEPROM.

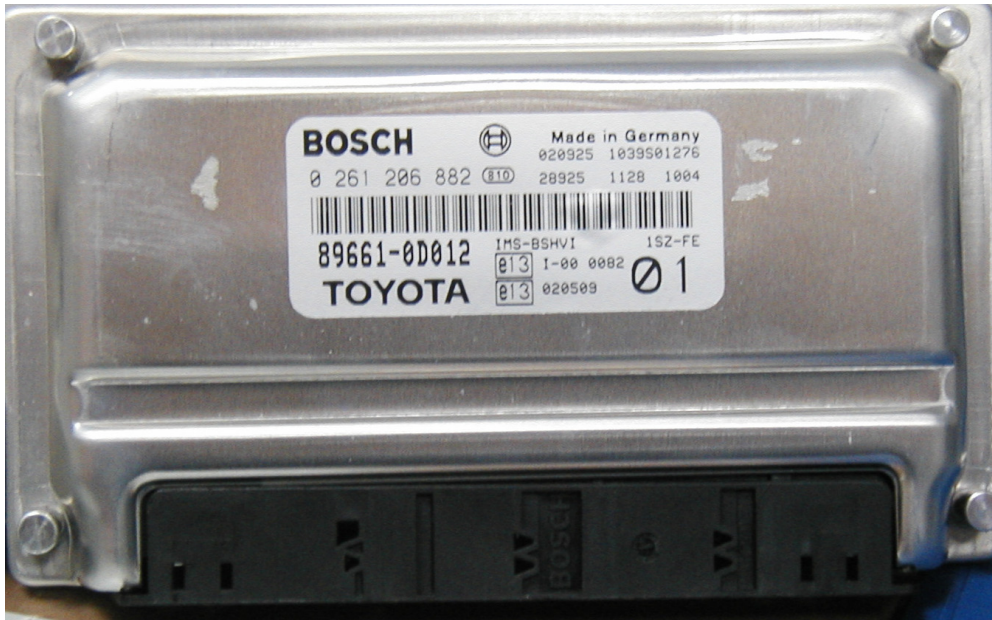
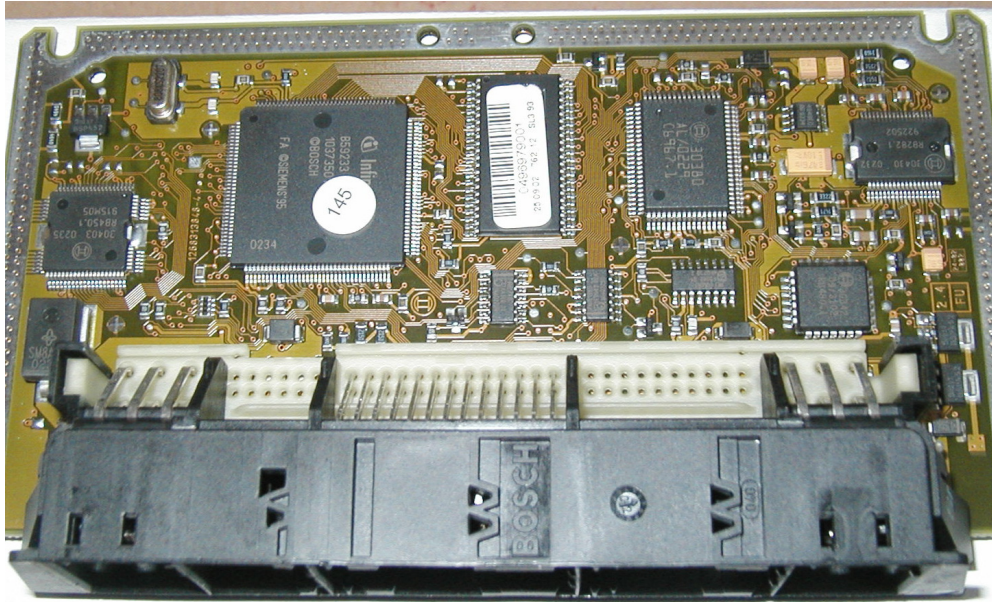


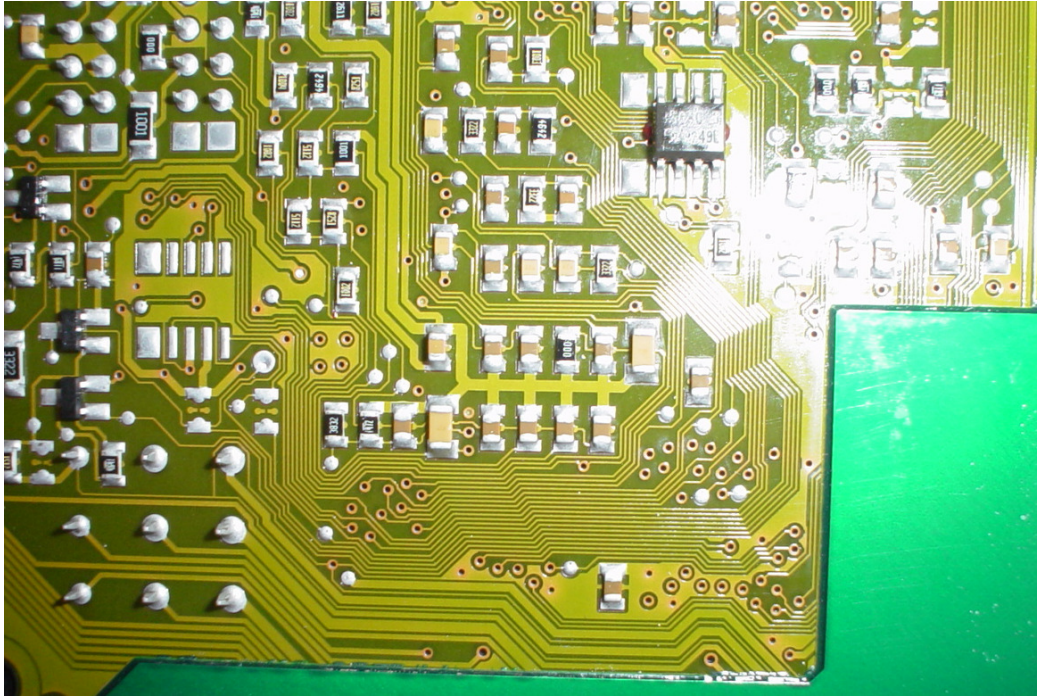


Use only original factory key. With Silca 4D transponder car will not start.
Use **A6** or **A4** adapter and follow CarProg instruction to program transponder key.
Short quartz resonator for in-circuit EEPROM programming or remove 93C66 from immobiliser board.

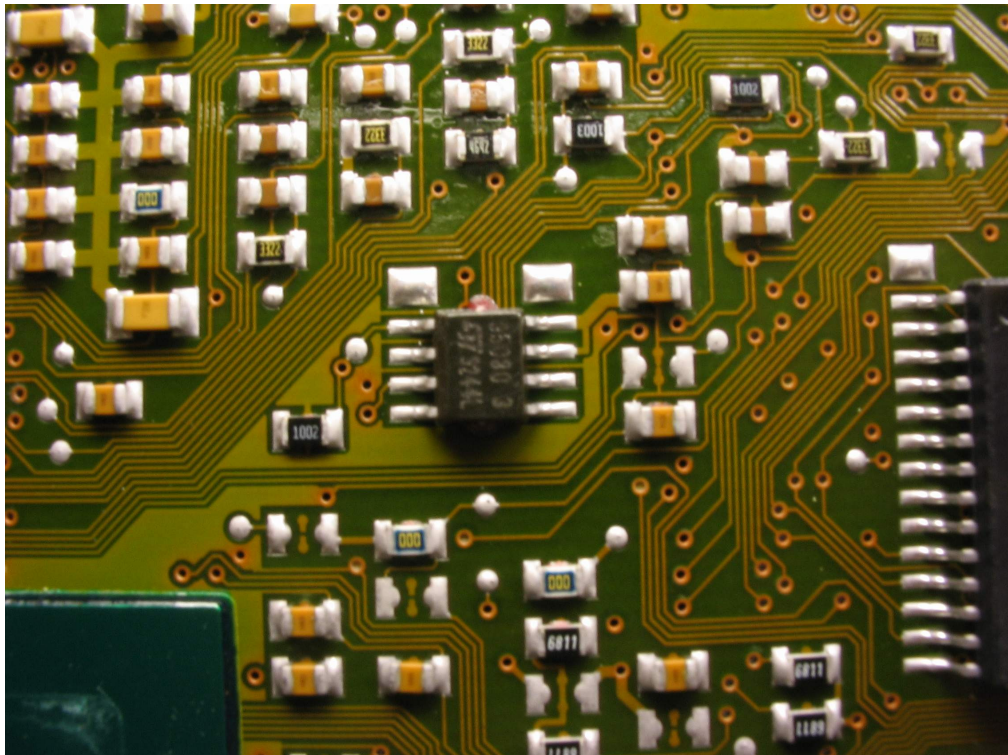
S4.1.4. European Toyota immobiliser system used in small engines ECU like Yaris or Corolla. Remove motor ECU (made by Bosch) from car and open it. Find 25040 or 25020 EEPROM in SMD package.

Use **A6** or **A4** adapter and follow CarProg instruction to program transponder key. Short quartz resonator for in-circuit EEPROM programming or remove EEPROM from ECU board.





S4.1.5. European Toyota immobiliser system used from 2003 in small engines ECU like Yaris or Corolla. Used key is Texas 4C transponder.



Remove motor ECU (made by Bosch) from car and open it. Find 95080 or 25080 EEPROM in SMD package.

Use **A6** or **A4** adapter and follow CarProg instruction to program transponder key. **Short quartz resonator for in-circuit EEPROM programming or remove EEPROM from ECU board.**

S4.1.6. European Toyota immobiliser system used in small engines ECU like 1.4 VVT Corolla. Remove motor ECU (made by Bosch) from car and open it. Find 24C02 EEPROM in SMD package.

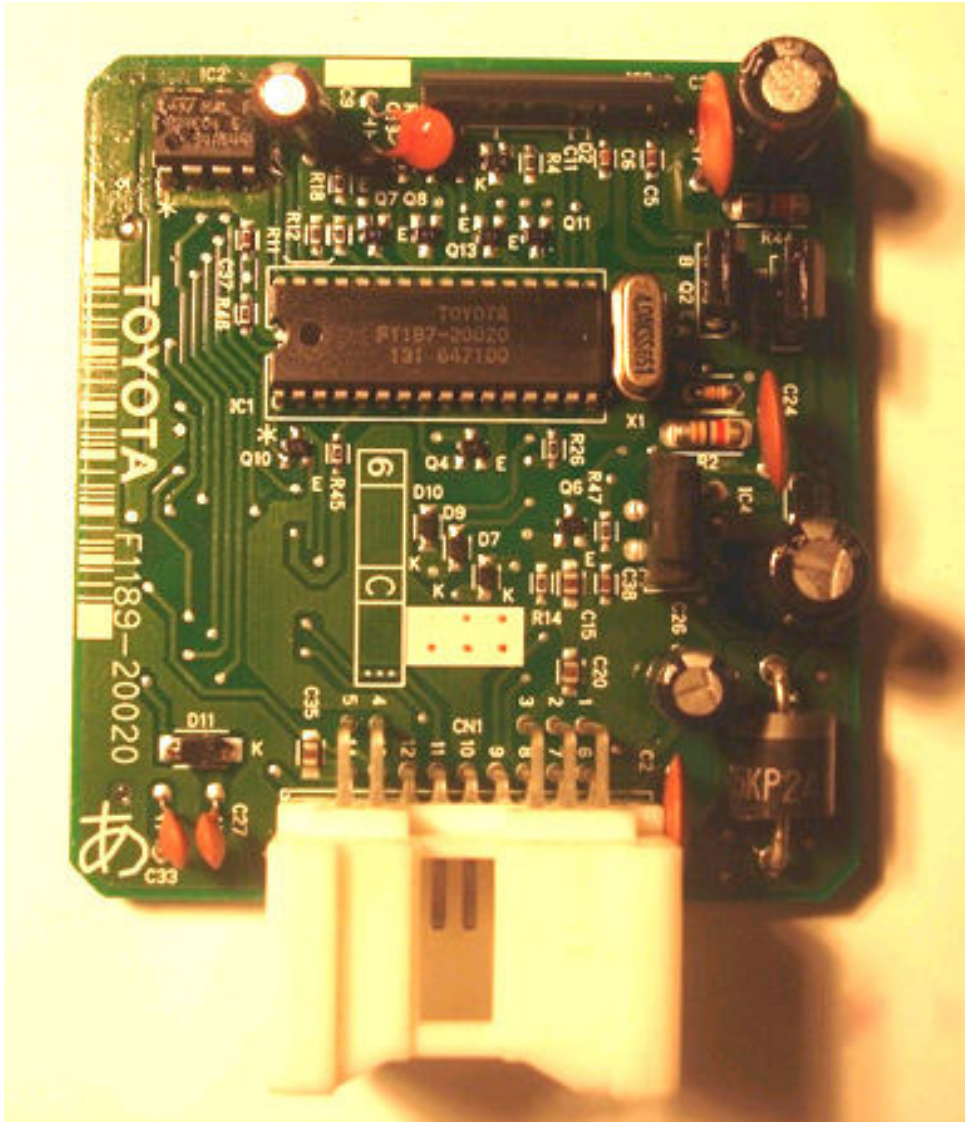
Use **A6** or **A4** adapter and follow CarProg instruction to program transponder key.



CARPROG

S4.1.7 Older Toyota immobiliser system with separated immo box and Philips PCF7931 transponder. Immobiliser box are located under dash panel. Usually this is brown box marked "immobilizer" or "125 kHz".





Remove immobiliser ECU from the car and open it. Find 24C04 EEPROM in DIP package. Use **A5** or **A4** adapter and follow CarProg instruction to program transponder key. **Short quartz resonator for in-circuit EEPROM programming or remove 24C04 from immobiliser board.**

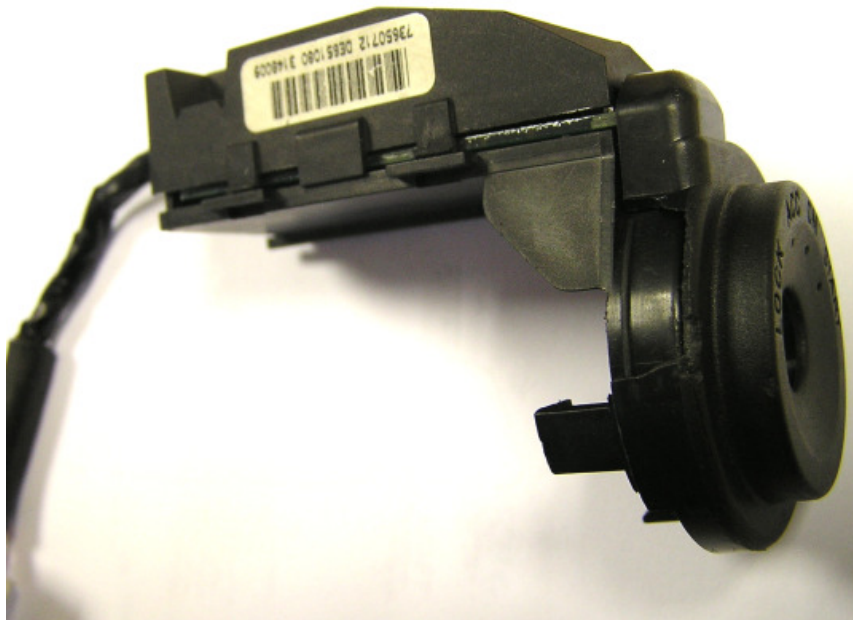
S4.1.8 Toyota immobiliser system with transponder antenna and AMP unit on the ignition key and motor ECU. Used in 2001 – 2003 Toyota/Lexus cars.

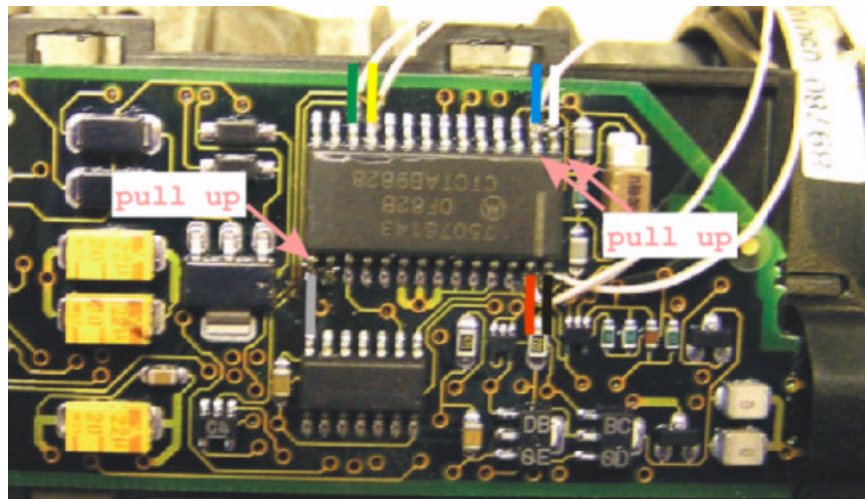
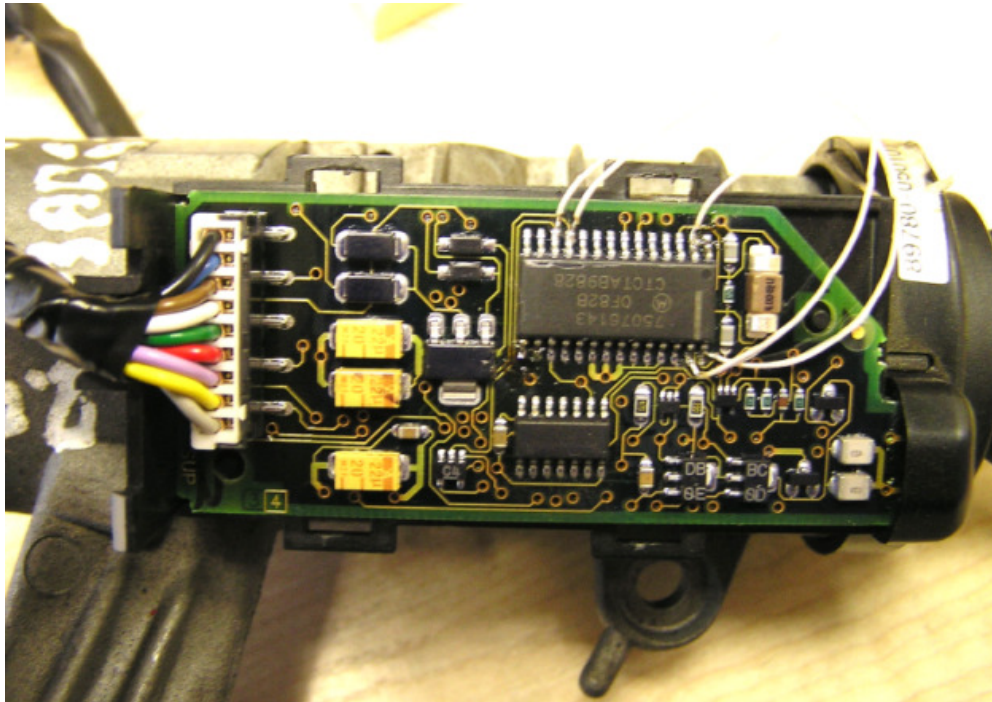


Transponder information is stored in motor ECU. Remove motor ECU from the car, open it and find 93C56 EEPROM marked IC601
Use **A6** or **A4** adapter and follow CarProg instruction to program transponder key. **Remove 93C56 from immobiliser board.**

S4.1.9 Toyota Avensis or Corolla immobiliser system with transponder antenna and AMP unit (on the ignition key lock) and motor ECU. Transponder 4C. Are two very similar immobiliser types – with Texas transponder and with Texas Crypto transponder. Different is only processor inside immobiliser:

- Texas 4C: (immobiliser unit: **89730-05010**) – works only this system!
- Texas Crypto with "Valeo" mark on the blade (immobiliser unit: **89780-02010**; Key blank: 89785-02050, key with remote: 89070-05020)





Use **A9** adapter, connect like in picture (pull up pins 1, 2 and 15 and connect white, blue, green, yellow, orange, black and red wires) and follow CarProg instruction to program transponder key.