

ENIGMA USER MANUAL

ALFA ROMEO 145 ST MODULE

DASHBOARD PHOTO:



REQUIRED CABLE(s): C8



FOLLOW THIS INSTRUCTION STEP BY STEP:

1. Remove the dashboard and open it carefully.
2. Remove the back side of the dash to get to the main board.
3. First lift up PIN from microcontroller as shown on PHOTO 1.
4. Solder C8 cables according to colors as shown on PHOTO 2. Make sure that the connection you made is secure.
5. Press the READ EEP button and save memory backup data.
6. Press the READ KM button and check if the value shown on the screen is correct.
7. Now you can use the CHANGE KM function.

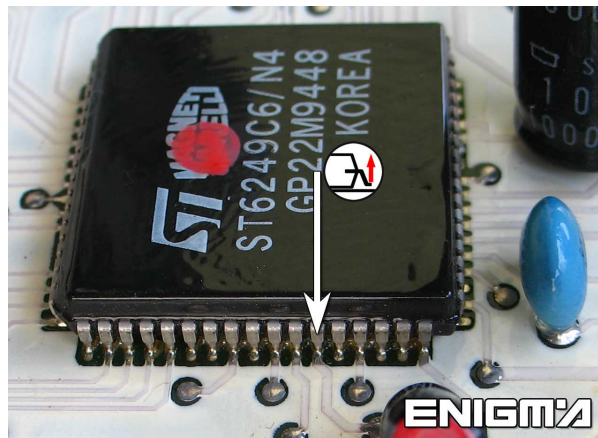


PHOTO 1: Lift up PIN from microcontroller as shown on the photo above.
Be sure to double check the PIN that you lift.
Remember to put the PIN that you lift back to its place when you finish.

FOR MORE INFORMATION

Call **0034 983 359 787** or visit www.enigmatool.com

DIAGCARELECTRONICS S.L. Ebanistería 1A, 47610 Zaratán, Spain


Diagcar S.L.

ENIGMA USER MANUAL
ALFA ROMEO 145 ST MODULE

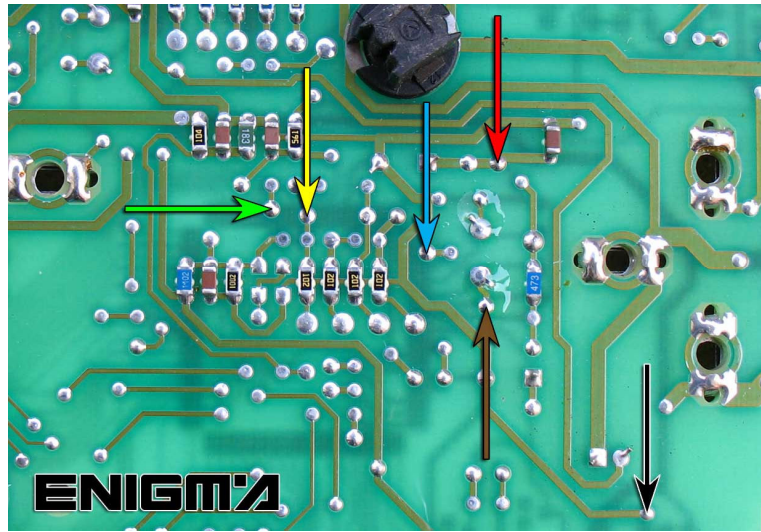


PHOTO 2: Solder cables according to the colors like shown on the photo above.

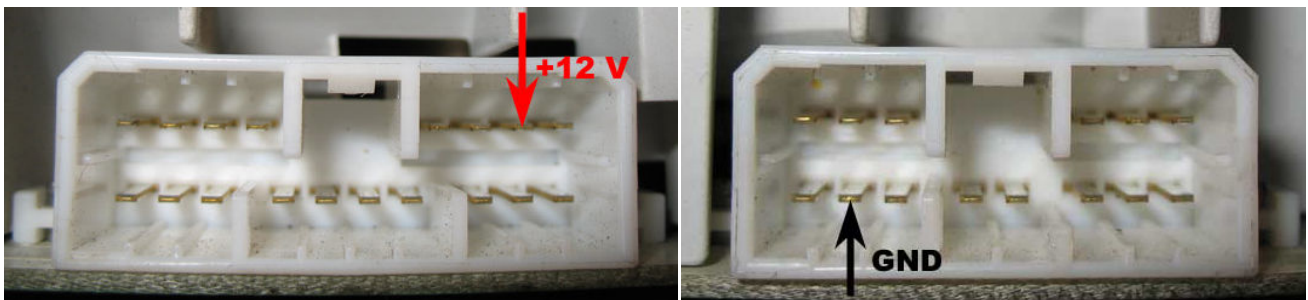


PHOTO 3: Power supply to check old or new data value.

LEGAL DISCLAIMER:

DIAGCAR ELECTRONICS S.L. does not take any legal responsibility of illegal use of any information stored in this document. Copying, distributing or taking any action in reliance with the content of this information is strictly prohibited.

FOR MORE INFORMATION

Call **0034 983 359 787** or visit www.enigmatool.com

DIAGCARELECTRONICS S.L. Ebanistería 1A, 47610 Zaratán, Spain

