

# ENIGMA USER MANUAL

## ALFA ROMEO 147NEC DASH

### DASHBOARD PHOTO:

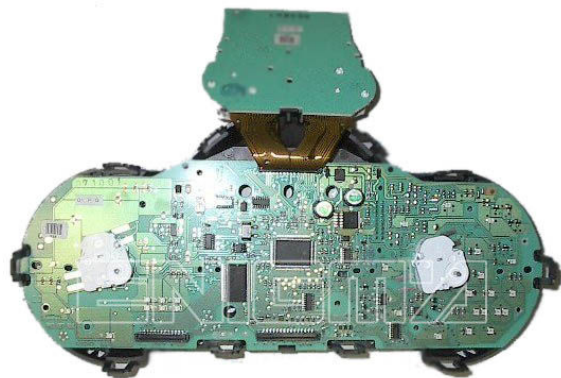
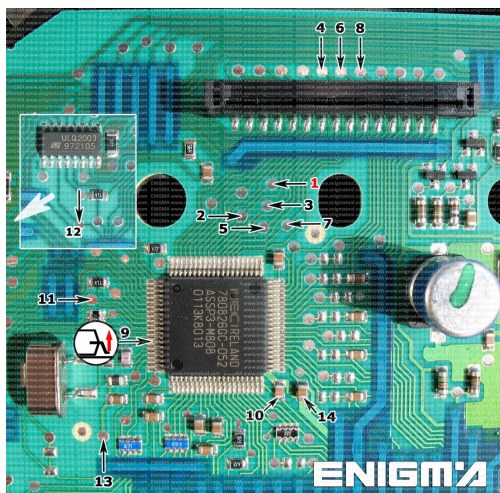


### REQUIRED CABLE(S): C13



### FOLLOW THIS INSTRUCTION STEP BY STEP:

1. Remove the dashboard and open both sides carefully.
2. Carefully take off the nails and move the screen as you can see on the PHOTO 1.
3. Look at the PHOTO 1 to find correct solder points on the dash.
4. Solder C13 cables according to colors as shown on PHOTO 1. Remember to lift up PIN from the NEC processor. Remember to put PIN back to its place when you finish.
5. Make sure that you soldered the C13 cables correctly.
6. Before changing anything use EEPROM EDITOR to read and save memory backup data from the dash.
7. Press the READ KM button and check if the value shown on the screen is correct.
8. Now you can use the CHANGE KM function.



**PHOTO 1:** Solder cable C13 according to numbers on the picture above where number 1 is brown.

FOR MORE INFORMATION

Call **0034 983 359 787** or visit [www.enigmatool.com](http://www.enigmatool.com)

DIAGCARELECTRONICS S.L. Ebanistería 1A, 47610 Zaratán, Spain

  
**Diagcar** S.L.

ENIGMA USER MANUAL  
**ALFA ROMEO 147NEC DASH**

**LEGAL DISCLAIMER:**

**DIAGCAR ELECTRONICS S.L. does not take any legal responsibility of illegal use of any information stored in this document. Copying, distributing or taking any action in reliance with the content of this information is strictly prohibited.**

FOR MORE INFORMATION

Call **0034 983 359 787** or visit **[www.enigmatool.com](http://www.enigmatool.com)**

DIAGCAR ELECTRONICS S.L. Ebanistería 1A, 47610 Zaratán, Spain

