

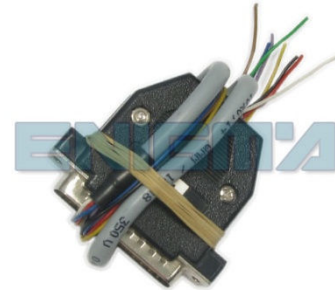
ENIGMA USER MANUAL

APRILLA RSV TO 2003

DASHBOARD PHOTO:



REQUIRED CABLE(S): C11



FOLLOW THIS INSTRUCTION STEP BY STEP:

1. Remove the dashboard and open it very carefully.
2. Carefully remove the nail and the back side of the dash to get to the main board.
3. Solder cables as shown on PHOTO 1.
4. Make sure that the connection you made is secure.
5. Press the READ EEP button and save memory backup data.
6. Press the READ KM button and check if the value shown on the screen is correct.
7. Now you can use the CHANGE KM function.

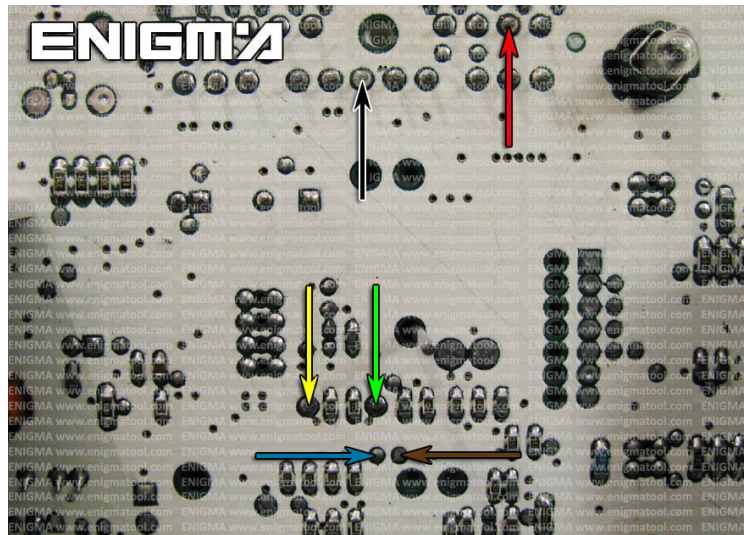


PHOTO 1: Solder cables according to the colors like shown on the photos above.

FOR MORE INFORMATION

Call **0034 983 359 787** or visit www.enigmatool.com

DIAGCARELECTRONICS S.L. Ebanistería 1A, 47610 Zaratán, Spain

ENIGMA USER MANUAL
APRILLA RSV TO 2003

LEGAL DISCLAIMER:

DIAGCAR ELECTRONICS S.L. does not take any legal responsibility of illegal use of any information stored in this document. Copying, distributing or taking any action in reliance with the content of this information is strictly prohibited.

FOR MORE INFORMATION

Call **0034 983 359 787** or visit **www.enigmatool.com**

DIAGCAR ELECTRONICS S.L. Ebanistería 1A, 47610 Zaratán, Spain

