

ENIGMA USER MANUAL

ASTON MARTIN VANQUISH HC7

DASHBOARD PHOTO:



REQUIRED CABLE(s): C11



FOLLOW THIS INSTRUCTION STEP BY STEP:

1. Remove the dashboard and open it carefully.
2. Remove the back side of the dash to get to the main board.
3. Solder cables as shown on PHOTO 1.
Make sure that the connection you made is secure.
Remember to lift up PIN from the processor.
Remember to put PIN back to its place when you finish.
4. Before changing anything use EDITOR to read and save memory backup data from the dash.
5. Press the READ KM button and check if the value shown on the screen is correct.
6. Now you can use the CHANGE KM function.

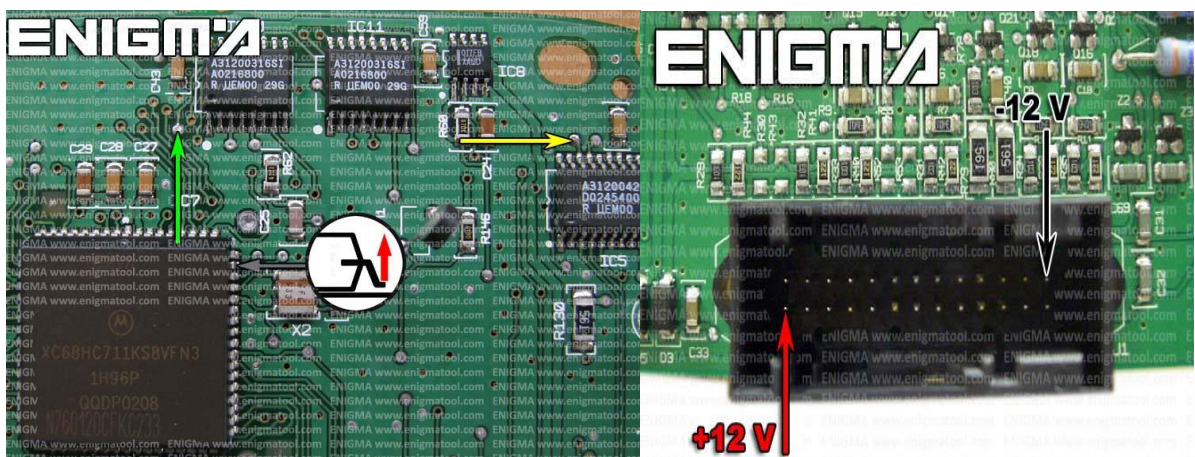


PHOTO 1: Solder cables according to the colors shown on the pictures above.

FOR MORE INFORMATION

Call **0034 983 359 787** or visit www.enigmatool.com

DIAGCARELECTRONICS S.L. Ebanistería 1A, 47610 Zaratán, Spain


Electronics
Diagcar S.L.

ENIGMA USER MANUAL
ASTON MARTIN VANQUISH HC7

LEGAL DISCLAIMER:

DIAGCAR ELECTRONICS S.L. does not take any legal responsibility of illegal use of any information stored in this document. Copying, distributing or taking any action in reliance with the content of this information is strictly prohibited.

FOR MORE INFORMATION

Call **0034 983 359 787** or visit **www.enigmatool.com**

DIAGCAR ELECTRONICS S.L. Ebanistería 1A, 47610 Zaratán, Spain

