

ENIGMA USER MANUAL

AUDI A4 FROM 2007 V1

DASHBOARD PHOTO:



REQUIRED CABLE(s):

C46



FOLLOW THIS INSTRUCTION STEP BY STEP:

1. Remove the dashboard and open it carefully.
 2. Remove the back side of the dash to get to the main board and identify it.
 3. Connect the power plug to the dash.
 4. Solder cable C46 to the points on the back of the dash mainboard as shown on PHOTO1.
- Remember to remove resistor and to put it back to its place when the job is done.
Remember to make a bridge as shown on the photo and undo it when you finish.**
5. Make sure that the connection you made is secure.
 6. Use the EDITOR to save memory backup data.
 7. Press the READ KM button and check if the value shown on the screen is correct.
 8. Now you can use the CHANGE KM function.

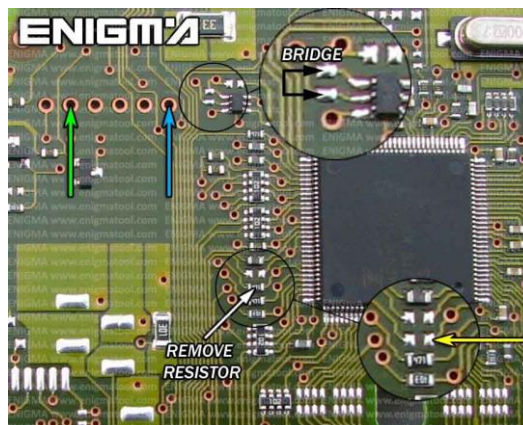


PHOTO 1: Solder cables according to the colors like shown on the photo above.

FOR MORE INFORMATION

Call **0034 983 359 787** or visit www.enigmatool.com

DIAGCARELECTRONICS S.L. Ebanistería 1A, 47610 Zaratán, Spain


Diagcar S.L.

ENIGMA USER MANUAL
AUDI A4 FROM 2007 V1

LEGAL DISCLAIMER:

DIAGCAR ELECTRONICS S.L. does not take any legal responsibility of illegal use of any information stored in this document. Copying, distributing or taking any action in reliance with the content of this information is strictly prohibited.

FOR MORE INFORMATION

Call **0034 983 359 787** or visit **www.enigmatool.com**

DIAGCAR ELECTRONICS S.L. Ebanistería 1A, 47610 Zaratán, Spain

