

ENIGMA USER MANUAL

BMW 7 SERIES E65 CAS TO 2005 V1

CAS LOCATION:



REQUIRED CABLE(S): C45 + A6



FOLLOW THIS INSTRUCTION STEP BY STEP:

1. First locate CAS module.
2. Remove the module and open it carefully.
3. Solder C45 cables to modules mainboard as shown on PHOTO1 or PHOTO2.
Remember to connect A6 adapter.
4. Make sure that the connection you made is secure.
5. Press the READ KM button and check if the value shown on the screen is correct.
6. Use the EDITOR to save memory backup data.
7. Now you can use the CHANGE KM function.

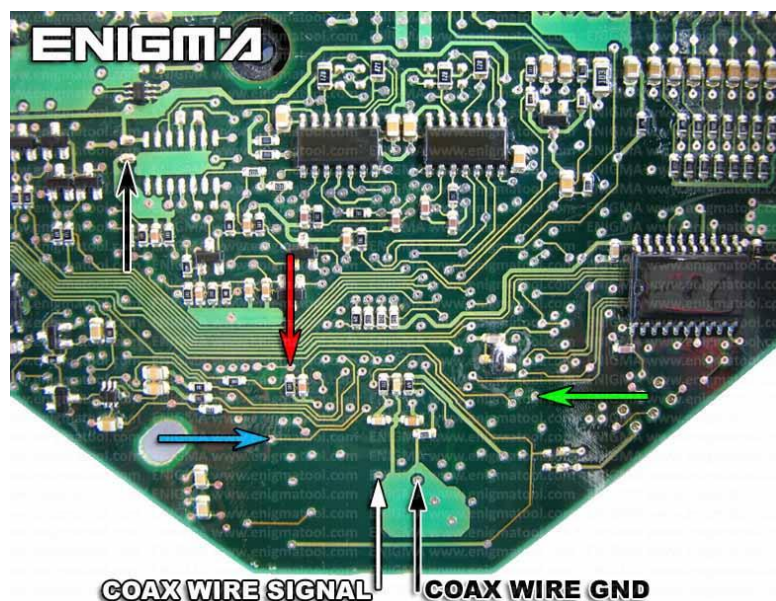


PHOTO VERSION 1: Solder C45 cables as shown on the photo above.

FOR MORE INFORMATION

Call **0034 983 359 787** or visit www.enigmatool.com

DIAGCARELECTRONICS S.L. Ebanistería 1A, 47610 Zaratán, Spain


Diagcar S.L.

ENIGMA USER MANUAL
BMW 7 SERIES E65 CAS TO 2005 V1

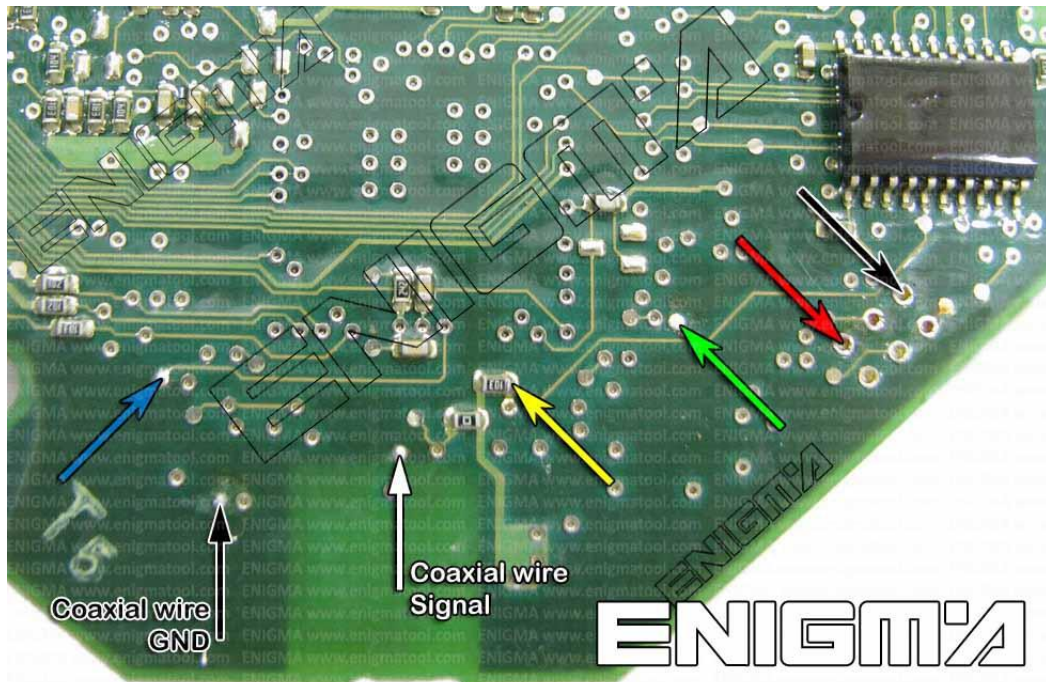


PHOTO VERSION 2: Solder C45 cables as shown on the photo above.

LEGAL DISCLAIMER:

DIAGCAR ELECTRONICS S.L. does not take any legal responsibility of illegal use of any information stored in this document. Copying, distributing or taking any action in reliance with the content of this information is strictly prohibited.

FOR MORE INFORMATION

Call **0034 983 359 787** or visit www.enigmatool.com

DIAGCARELECTRONICS S.L. Ebanistería 1A, 47610 Zaratán, Spain

