

BMW EWS4

EWS4 PHOTO:



REQUIRED CABLE(s):

C45 + A6



FOLLOW THIS INSTRUCTION STEP BY STEP:

1. Remove the EWS and open it carefully.
2. Look at PHOTO 1 and solder C45 cable according to the colors. **Remember to use A6 adapter.**
3. Make sure that the connection you made is secure.
4. Press the READ KM button and check if the value shown on the screen is correct.
5. Now you can use the CHANGE KM function.

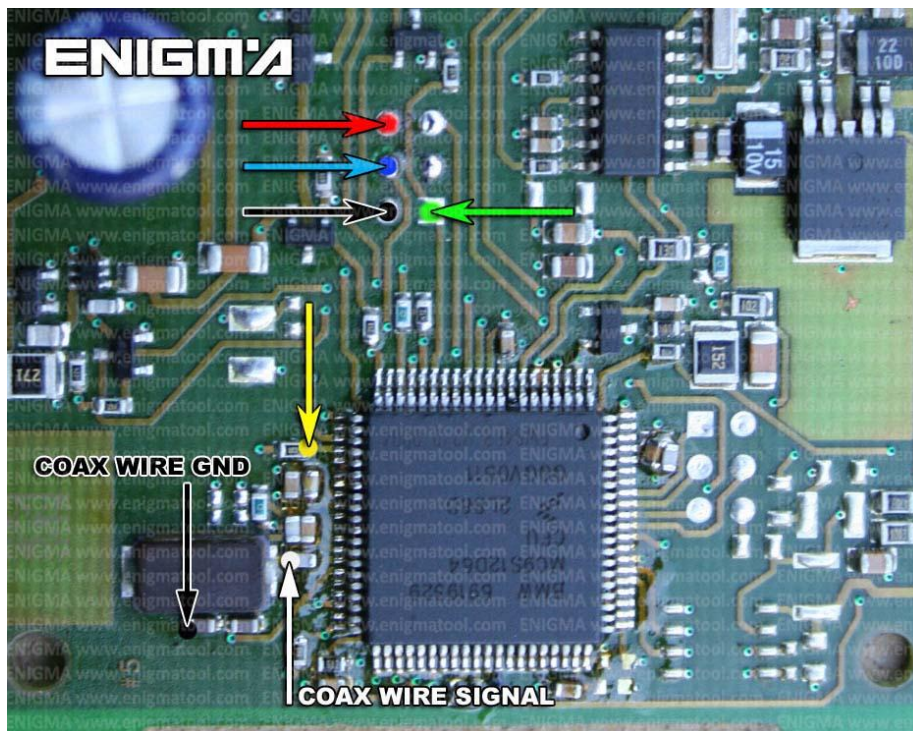


PHOTO 1: Solder C45 cable according to the picture above.

FOR MORE INFORMATION

Call **0034 983 359 787** or visit www.enigmatool.com

DIAGCARELECTRONICS S.L. Ebanistería 1A, 47610 Zaratán, Spain

LEGAL DISCLAIMER:

DIAGCAR ELECTRONICS S.L. does not take any legal responsibility of illegal use of any information stored in this document. Copying, distributing or taking any action in reliance with the content of this information is strictly prohibited.

FOR MORE INFORMATION

Call **0034 983 359 787** or visit **www.enigmatool.com**

DIAGCAR ELECTRONICS S.L. Ebanistería 1A, 47610 Zaratán, Spain

