

# ENIGMA USER MANUAL

## DACIA SOLENZA NEC

### DASHBOARD PHOTO:

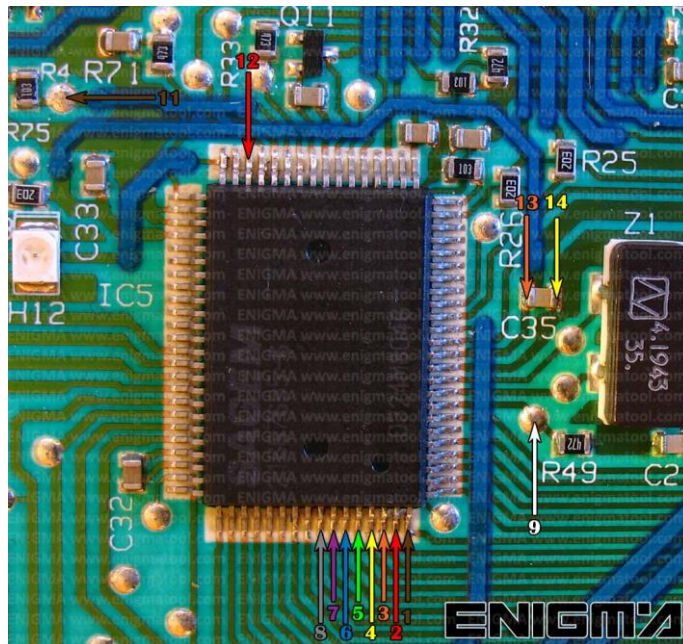


### REQUIRED CABLE(S): C13 + A1



### FOLLOW THIS INSTRUCTION STEP BY STEP:

1. Remove the dashboard and open it carefully.
2. Remove the back side and nails of the dash to get to the main board.
3. First solder cables as shown on PHOTO 1.
4. Second solder cables as shown on PHOTO2.  
Make sure that the connection you made is secure.
5. Before changing anything use EDITOR to save memory backup data.
6. Press the READ KM button and check if the value shown on the screen is correct.
7. Now you can use the CHANGE KM function.



**PHOTO 1:** Solder C13 cables according to the colors shown on the picture above.

FOR MORE INFORMATION

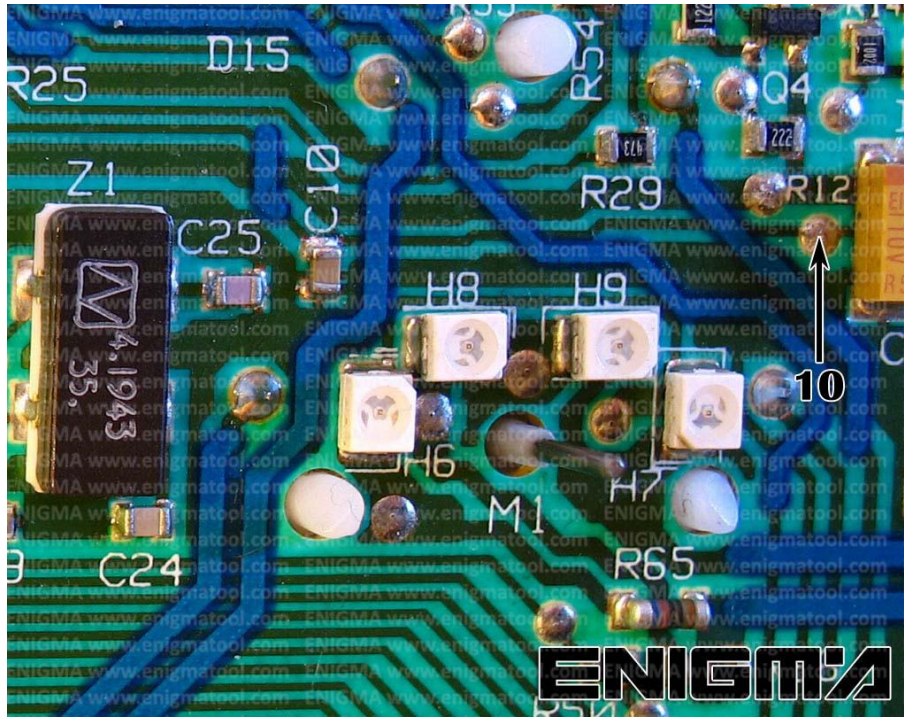
Call **0034 983 359 787** or visit [www.enigmatool.com](http://www.enigmatool.com)

DIAGCARELECTRONICS S.L. Ebanistería 1A, 47610 Zaratán, Spain

  
**Diagcar** S.L.

# ENIGMA USER MANUAL

## DACIA SOLENZA NEC



**PHOTO 2:** Solder C13 cables according to the colors shown on the picture above.

### LEGAL DISCLAIMER:

**DIAGCAR ELECTRONICS S.L. does not take any legal responsibility of illegal use of any information stored in this document. Copying, distributing or taking any action in reliance with the content of this information is strictly prohibited.**

FOR MORE INFORMATION

Call **0034 983 359 787** or visit [www.enigmatool.com](http://www.enigmatool.com)

DIAGCARELECTRONICS S.L. Ebanistería 1A, 47610 Zaratán, Spain

