

# ENIGMA USER MANUAL

## FIAT BRAVA HC08 V1

### DASHBOARD PHOTO:

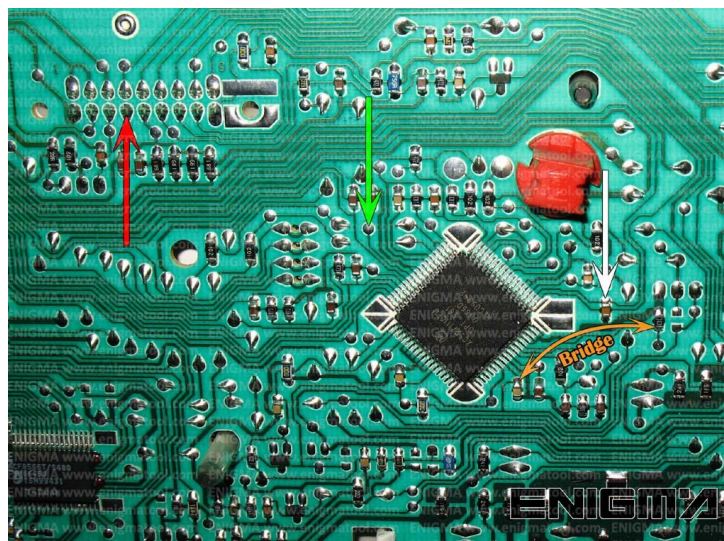


### REQUIRED CABLE(s): C12



### FOLLOW THIS INSTRUCTION STEP BY STEP:

1. Remove the dashboard and open it carefully.
2. Remove the back side of the dash to get to the main board.
3. Solder C12 cables as shown on PHOTO 1.  
**Remember to make BRIDGE between two points shown on PHOTO1.**
4. See power lead connection on PHOTO2.
5. Make sure that the connection you made is secure.
6. Use EDITOR to save memory backup data.
7. Press the READ KM button and check if the value shown on the screen is correct.
8. Now you can use the CHANGE KM function.



**PHOTO 1:** Solder C12 cables according to the colors like shown on the photos above.

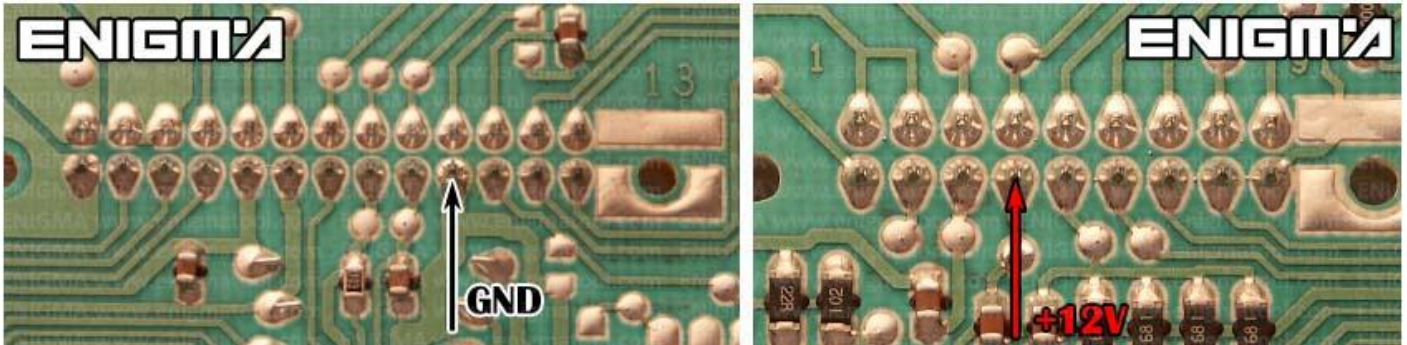
FOR MORE INFORMATION

Call **0034 983 359 787** or visit [www.enigmatool.com](http://www.enigmatool.com)

DIAGCARELECTRONICS S.L. Ebanistería 1A, 47610 Zaratán, Spain

  
**Diagcar** S.L.

ENIGMA USER MANUAL  
**FIAT BRAVA HC08 V1**



**PHOTO 2: Power lead connection.**

**LEGAL DISCLAIMER:**

**DIAGCAR ELECTRONICS S.L. does not take any legal responsibility of illegal use of any information stored in this document. Copying, distributing or taking any action in reliance with the content of this information is strictly prohibited.**

FOR MORE INFORMATION

Call **0034 983 359 787** or visit [www.enigmatool.com](http://www.enigmatool.com)

DIAGCAR ELECTRONICS S.L. Ebanistería 1A, 47610 Zaratán, Spain

