

ENIGMA USER MANUAL

FORD BANTAM NEC

DASHBOARD PHOTO:



REQUIRED CABLE(S): C13 + A1



FOLLOW THIS INSTRUCTION STEP BY STEP:

1. Remove the dashboard and open it carefully.
2. Remove the back side of the dash to get to the main board.
3. Solder C13 cable as shown on PHOTO 1.
Remember to lift TWO PINS like shown on PHOTO1.
4. Solder C13 cable as shown on PHOTO 2.
5. Solder C13 cables as shown on PHOTO 3.
6. Make sure that the connection you made is secure.
7. Press the READ KM button and check if the value shown on the screen is correct.
8. Now you can use the CHANGE KM function.

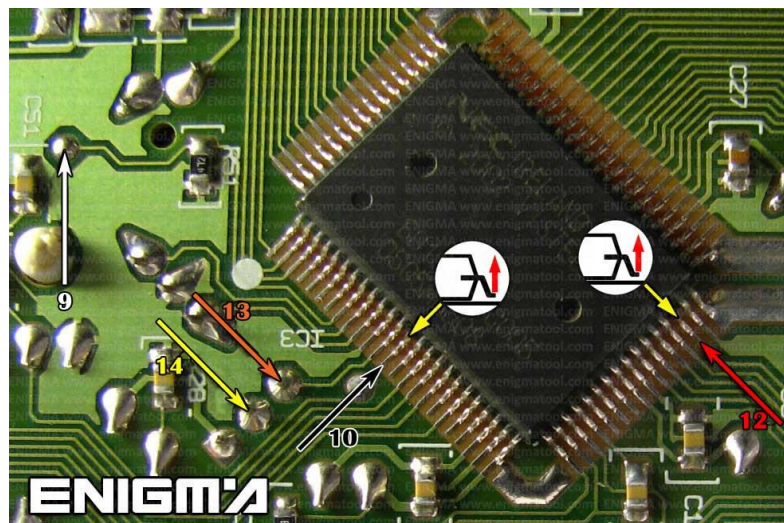


PHOTO 1: Solder C13 cables like shown on the photo above.

FOR MORE INFORMATION

Call **0034 983 359 787** or visit www.enigmatool.com

DIAGCARELECTRONICS S.L. Ebanistería 1A, 47610 Zaratán, Spain


Diagcar S.L.

ENIGMA USER MANUAL

FORD BANTAM NEC

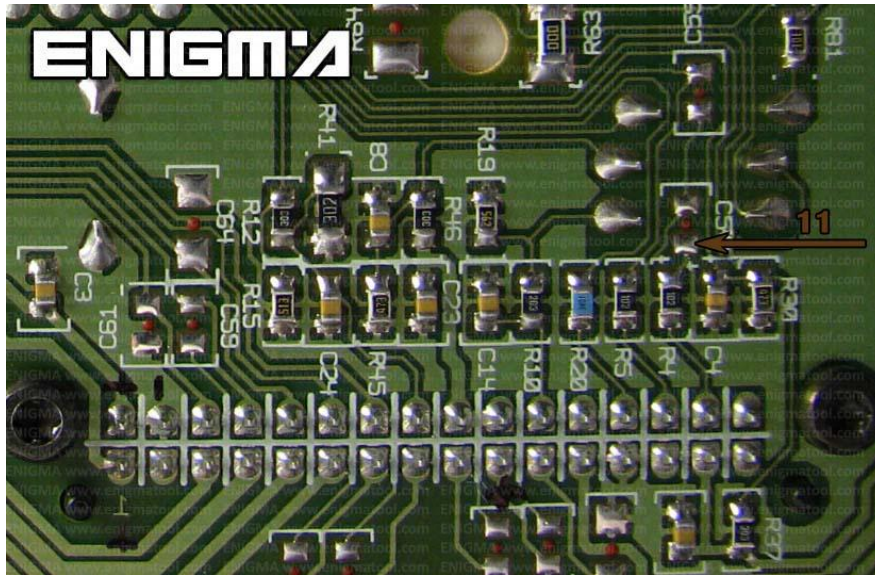


PHOTO 3: Solder C13 cable like shown on photo above.

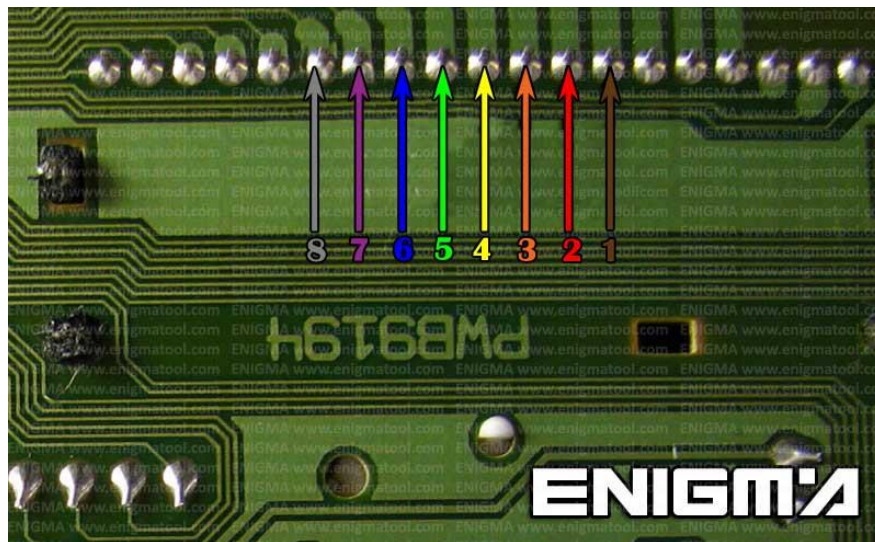


PHOTO 3: Solder C13 cables like shown on photo above.

LEGAL DISCLAIMER:

DIAGCAR ELECTRONICS S.L. does not take any legal responsibility of illegal use of any information stored in this document. Copying, distributing or taking any action in reliance with the content of this information is strictly prohibited.

FOR MORE INFORMATION

Call **0034 983 359 787** or visit www.enigmatool.com

DIAGCARELECTRONICS S.L. Ebanistería 1A, 47610 Zaratán, Spain

