

FORD FOCUS HC11 TILL 2002

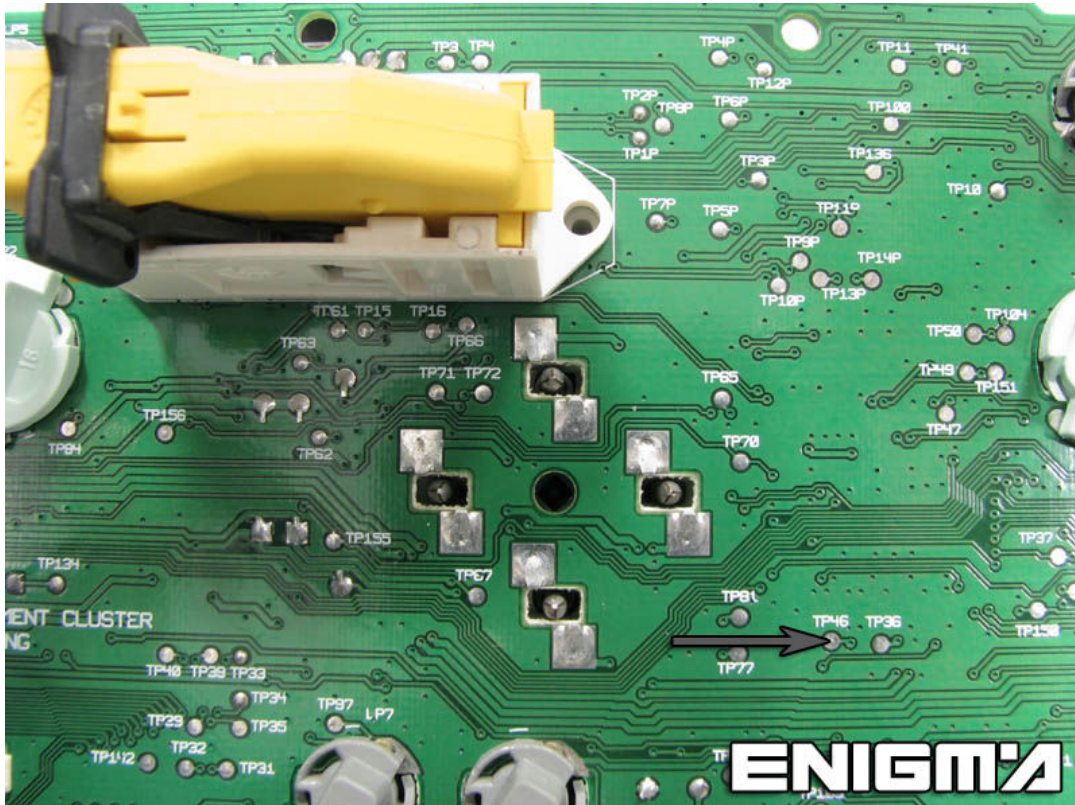


OR

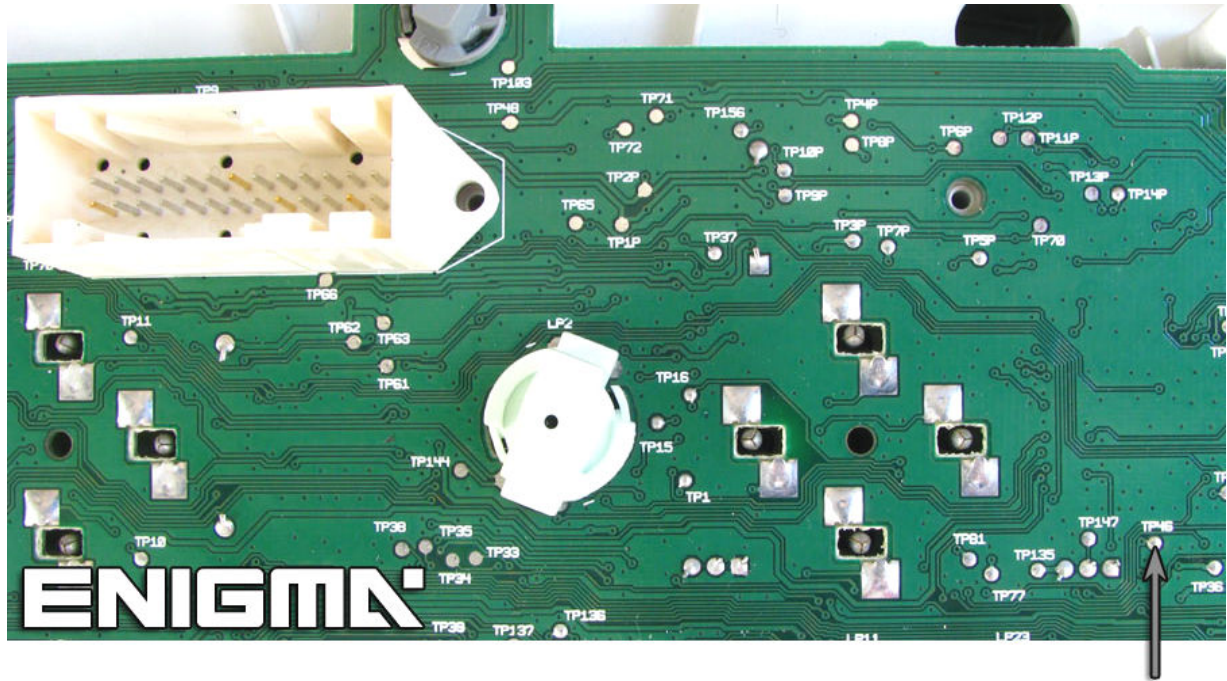


USE SPECIFIC CABLE C36, REMOVE DASH FROM CAR, CONNECT PLUG INTO WHITE DASH PLUG, AND GREY CABLE TO THE POINT SHOW ON PHOTO:

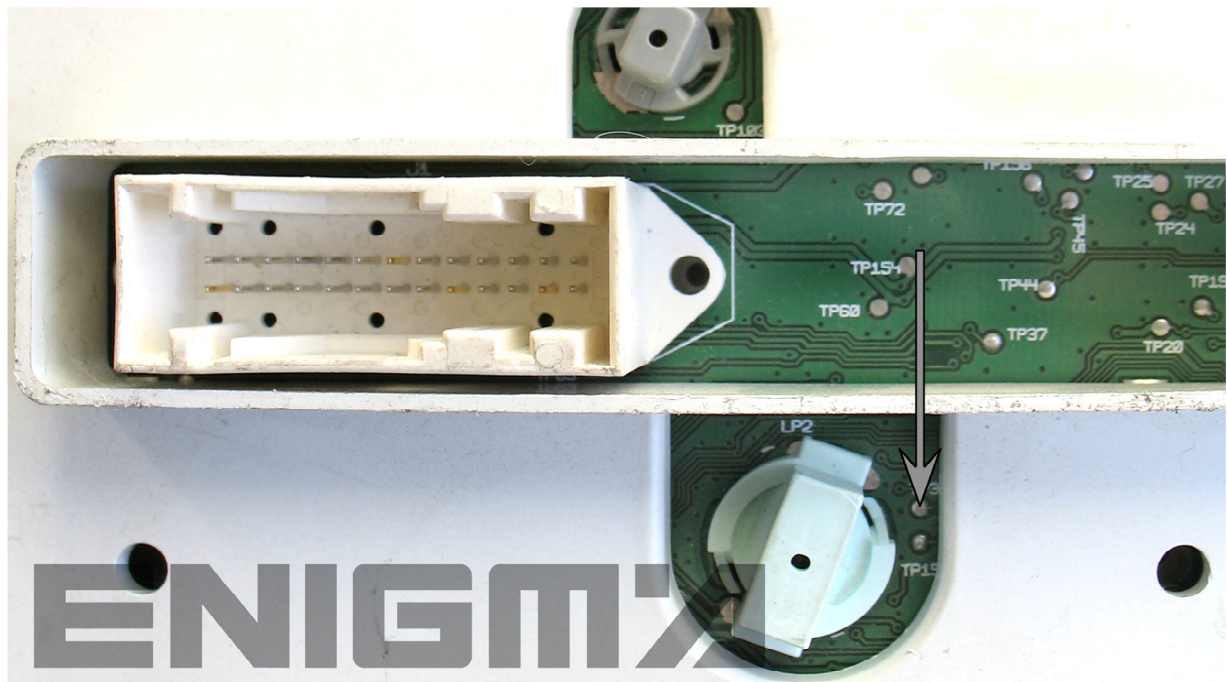
VERSION 1:



VERSION 2:



VERSION 3:



ALWAYS CONNECT YELLOW CABLE PLUG ON WHITE DASH CONNECTOR

IF THIS POINT IS NOT ON THE DASH, YOU HAVE TO OPEN BACK PLASTIC COVER FROM IT, WITH 5 TORX SCREWS. THEN PULL MAIN BOARD OUT AND CONNECT IT MAKING A BRIDGE BETWEEN PIN 1+2 FROM MOTOROLA MICRO.