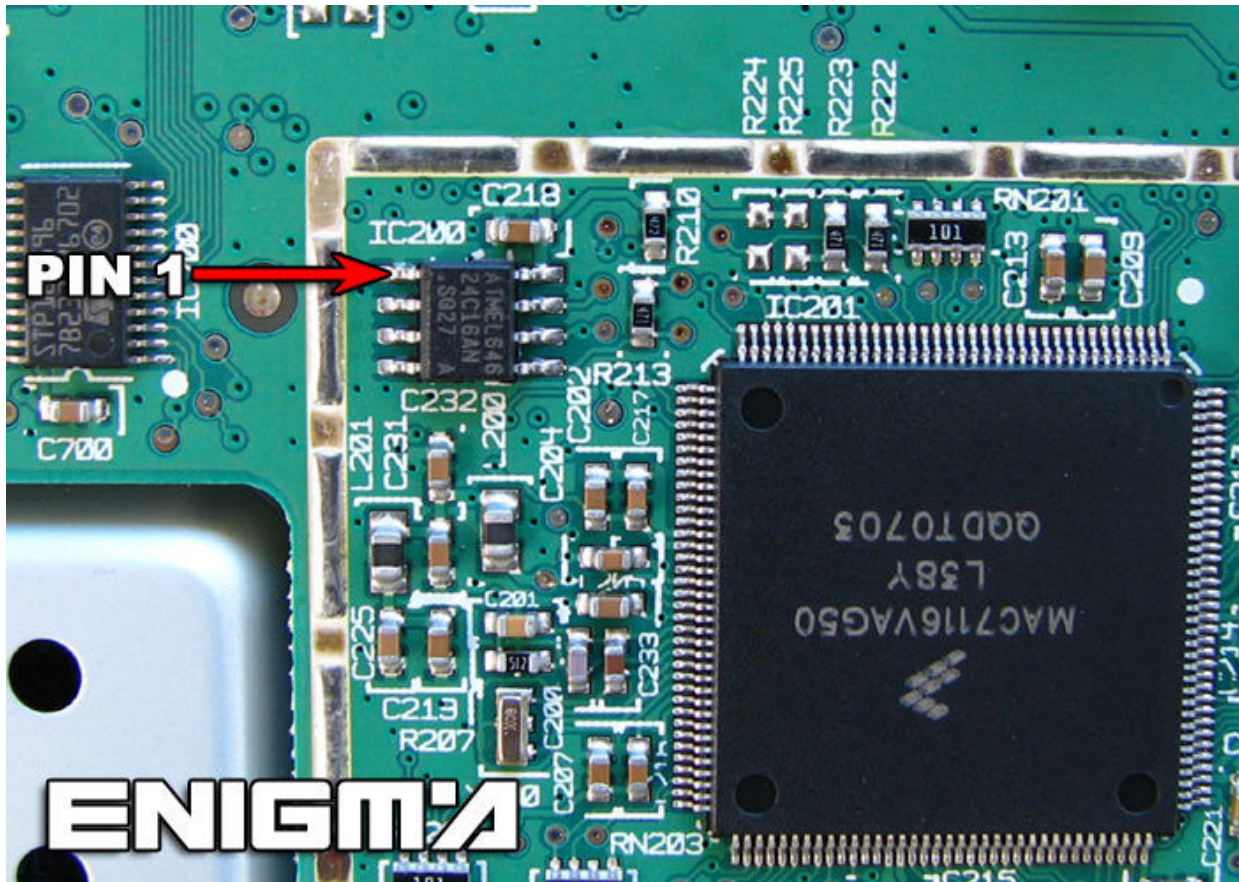


FORD MONDEO 2007

VERSION 1:



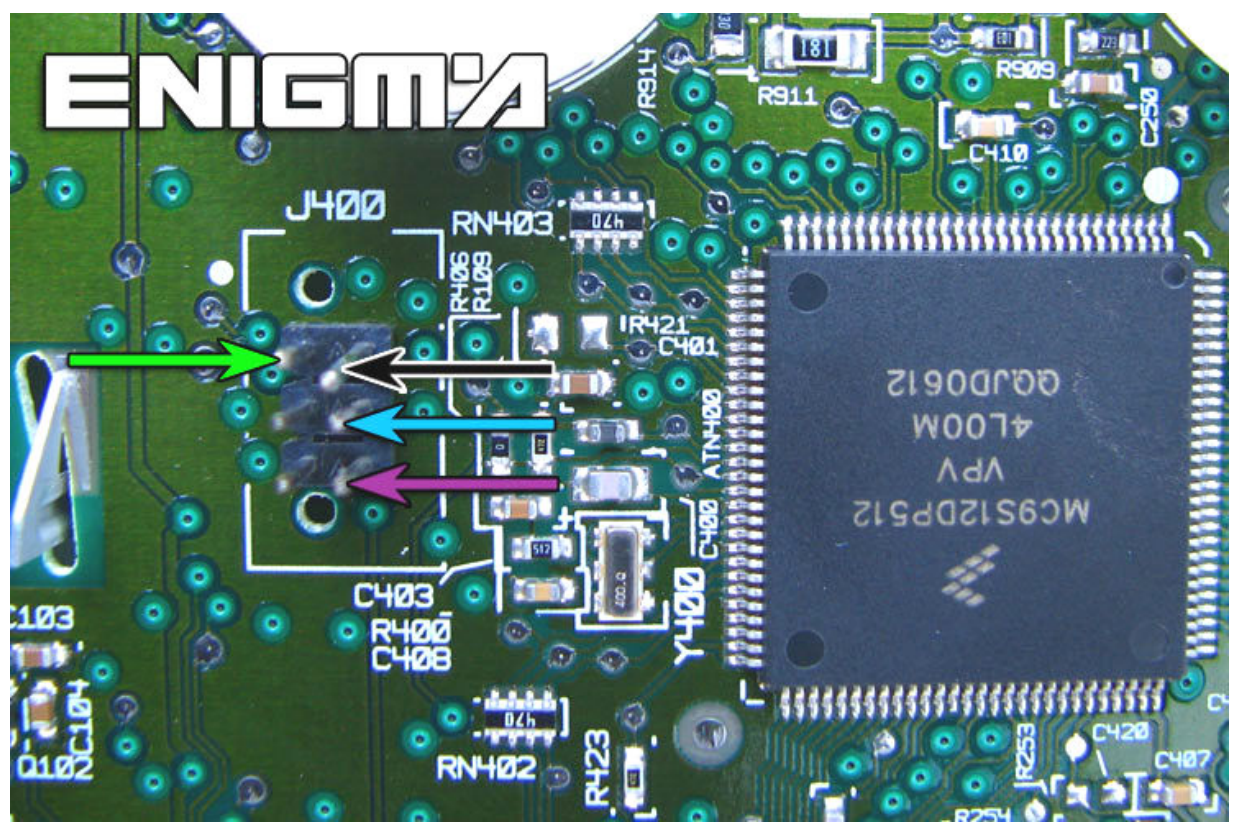
USE CABLE C4, REMOVE BACK COVER FROM DASH, CAREFULLY, THEN LOCATE EPROM MEMORY, AND CLIP IT CHECKING **PIN 1** AS SHOWN OF PHOTO BELOW:



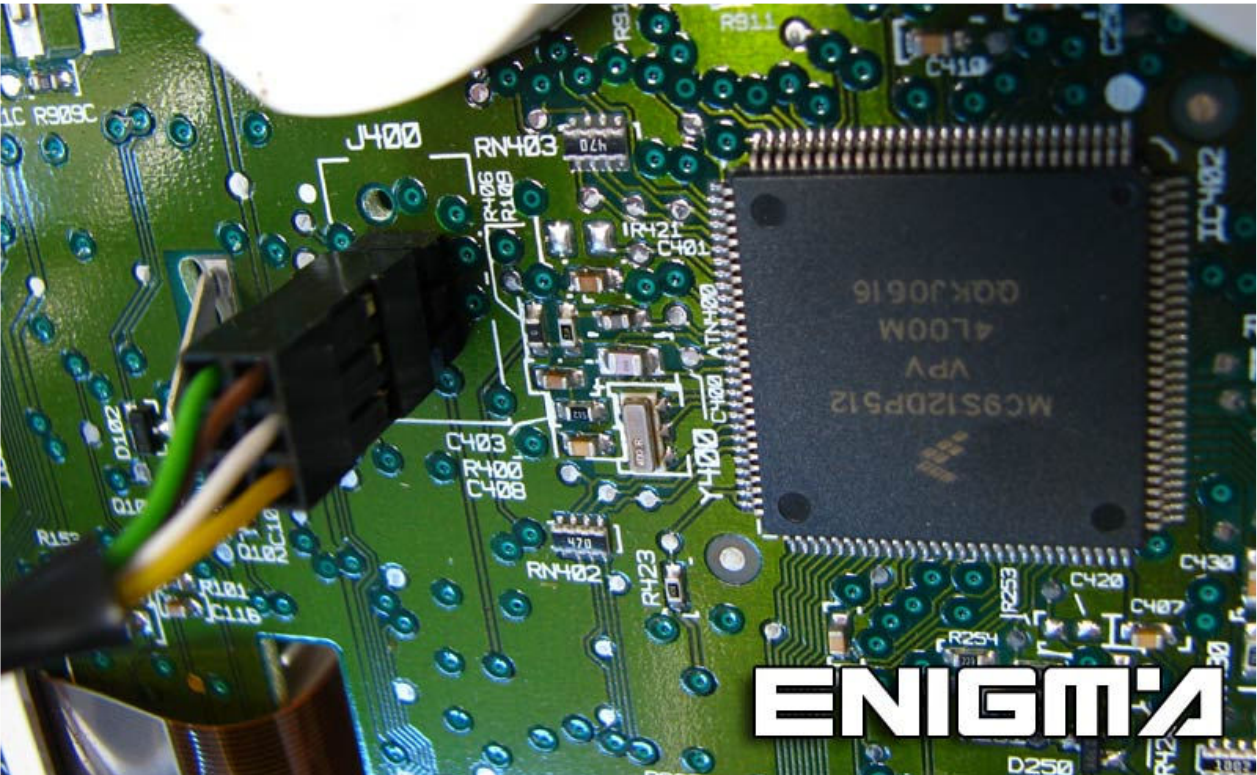
VERSION 2:



USE CABLE C12 - HCS12, REMOVE BACK PLASTIC COVER FROM DASH, PLEASE MAKE IT CAREFULLY, AND THEN SOLDER CABLE LEADS ACCORDING TO COLOURS AS SHOWN ON THE PHOTO BELOW:



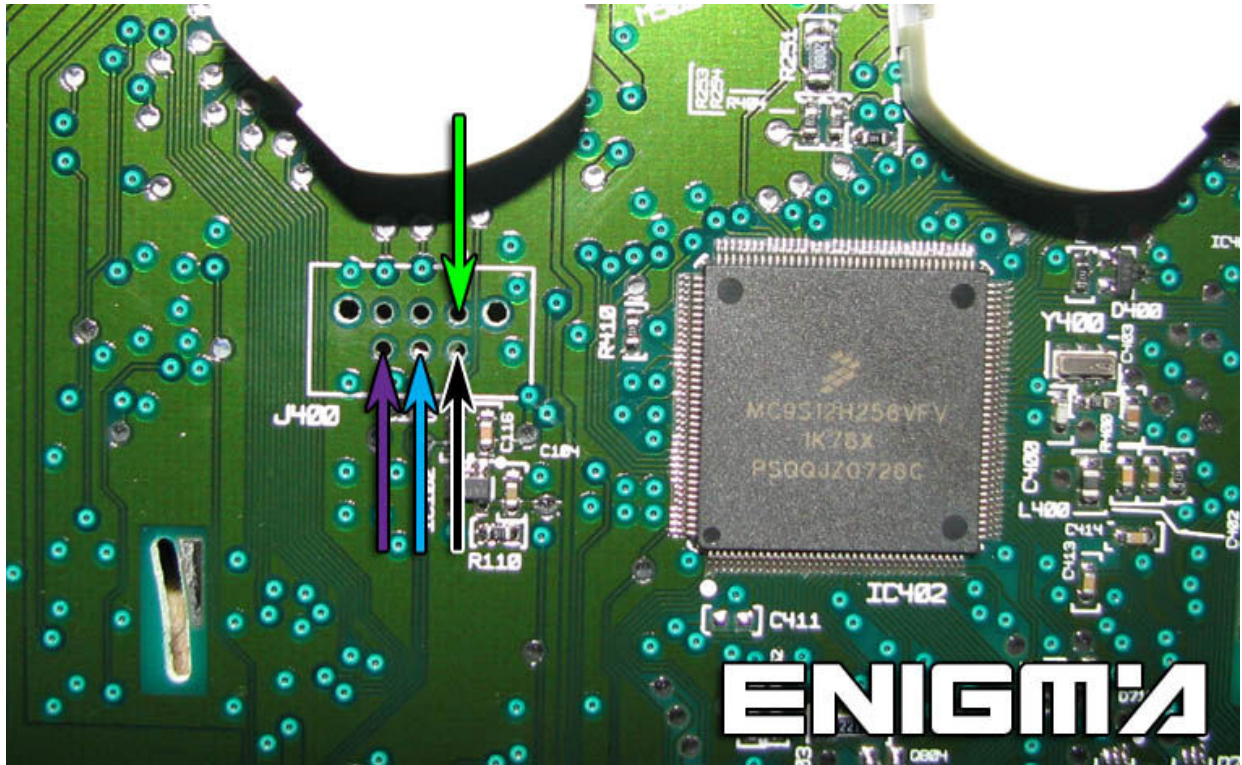
ALSO WE CAN USE SPECIFIC CABLE C43, LIKE YOU CAN SEE ON NEXT PHOTO:



VERSION 3:



USE CABLE C12 - HCS12, REMOVE BACK PLASTIC COVER FROM DASH, PLEASE MAKE IT CAREFULLY, AND THEN SOLDER CABLE LEADS ACCORDING TO COLOURS AS SHOWN ON THE PHOTO BELOW:



WE CAN FOUND ANOTHER VERSION OF BOARD:

