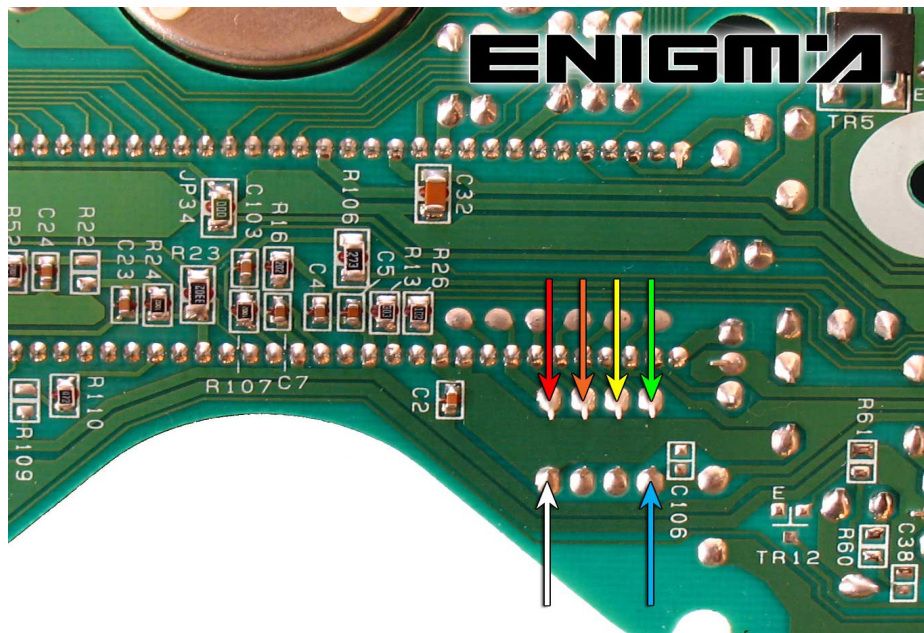
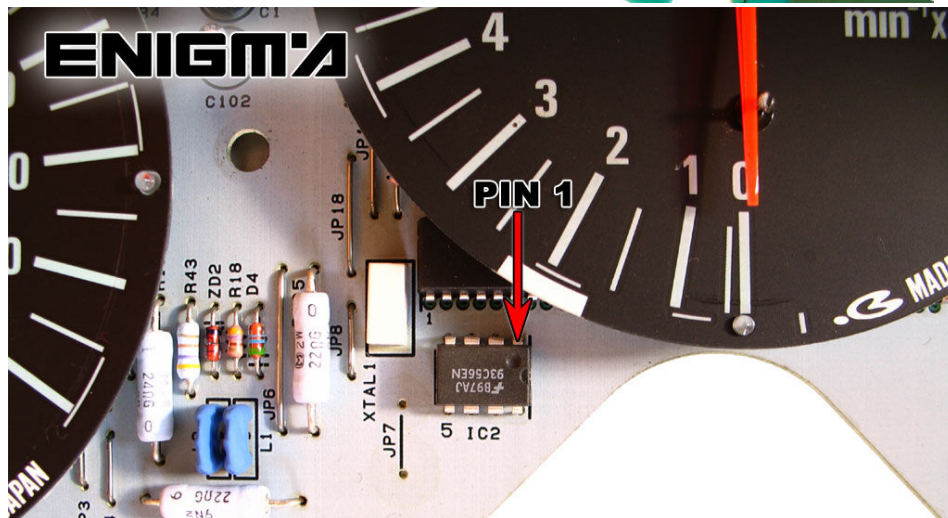


HONDA CBR 900 FIREBLADE TO 2000



USE C7 CABLE, WE ONLY NEED TO TAKE OFF BACK PART OF DASH, LOCATE POINTS IN THE MAIN BOARD LIKE IN PHOTO BELOW AND SOLDER CABLE LEADS AS IT SHOWS TO US. **NEVER** TOUCH NAILS, IT IS VERY DANGEROUS.



WE CAN ALSO CLIP DIRECTLY, USING CABLE C4, CHECKING PIN 1 POSITION LIKE ON SIDE PHOTO.