

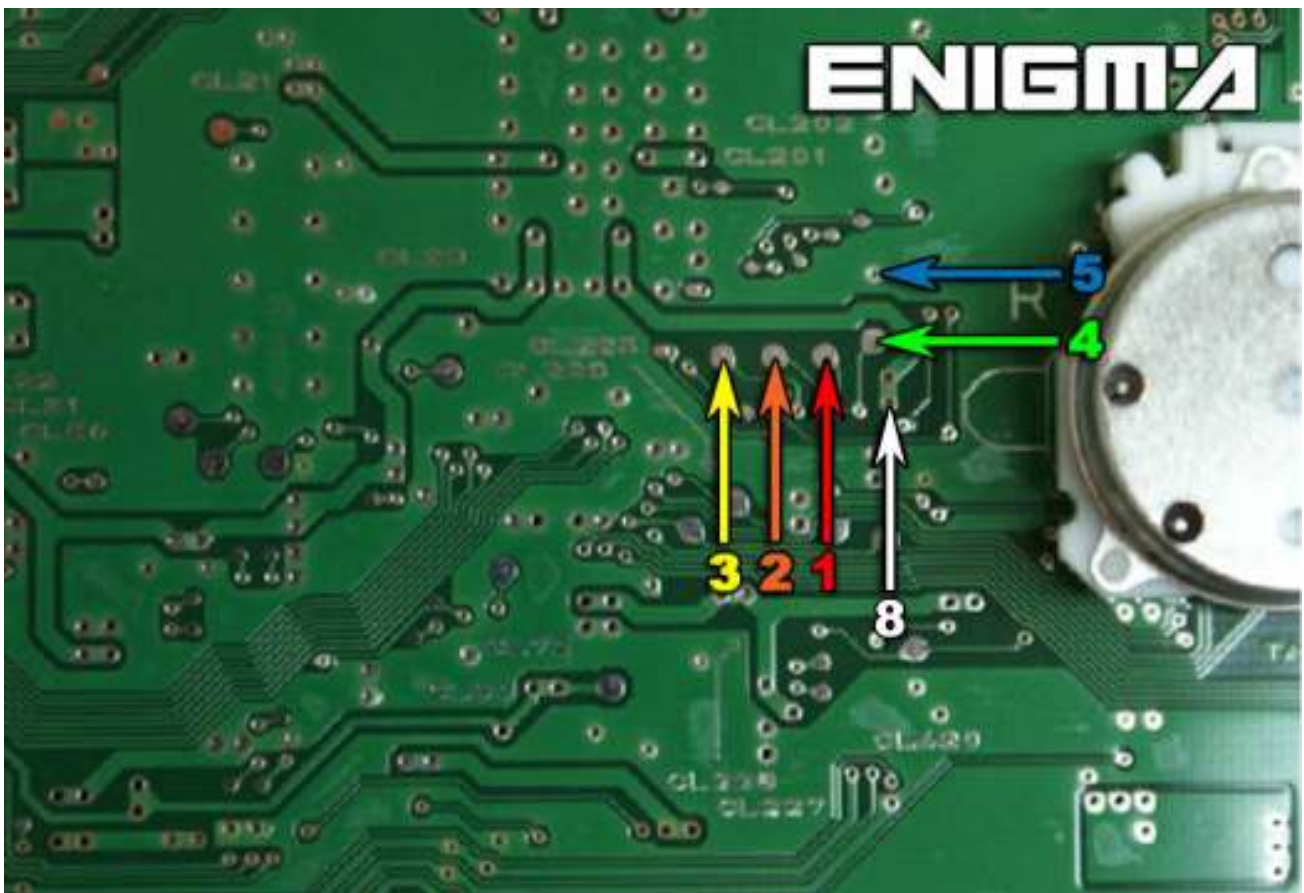
HONDA ACCORD DASH FROM 2008

THERE ARE 2 VERSIONS, SAME OUTSIDE, BUT DIFFERENT INSIDE BOARDS:



VERSION 1:

USE C7 CABLE, WE ONLY NEED REMOVE BACK COVER FROM DASH, LOCATE POINTS IN THE MAIN BOARD LIKE IN PHOTO BELOW AND SOLDER CABLE LEADS AS IT SHOWS TO US. **NEVER** TOUCH NAILS, IT IS VERY DANGEROUS:



VERSION 2:

USE CABLE C4, REMOVE BACK PLASTIC COVER OF DASH, THEN LOCATE EPROM MEMORY AND CLIP IT CHECKING **PIN 1** AS SHOWN OF BELOW PHOTO:

