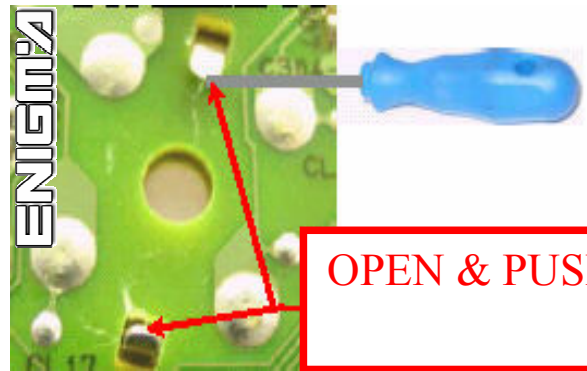


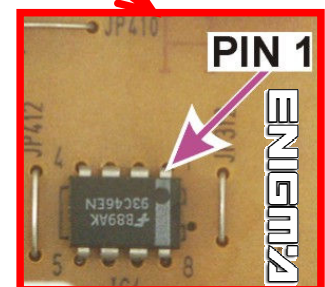
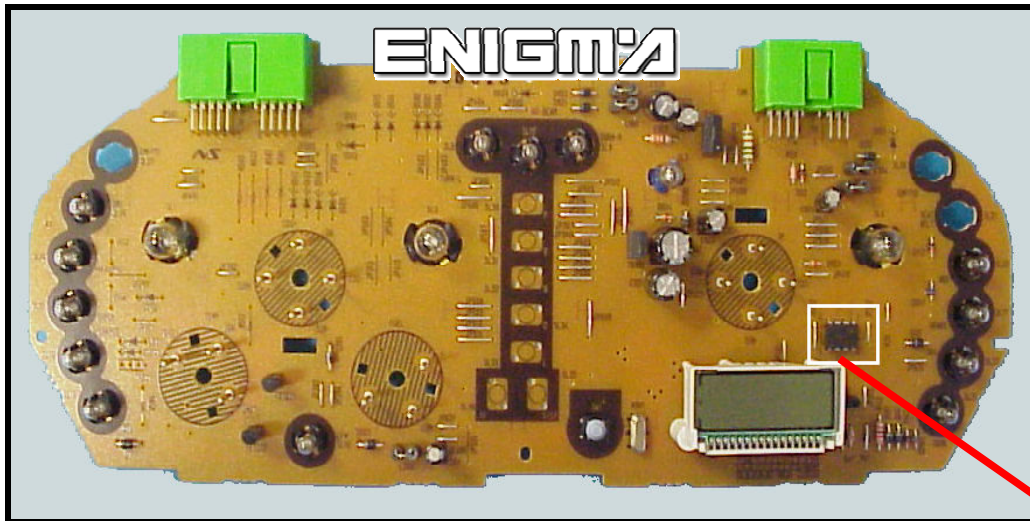
HONDA HRV



USE CABLE C5, REMOVE FRONT AND REAR PLASTICS FROM DASH.
THEN REMOVE NAILS AND ENGINES (ALL TOGETHER), LIKE IN THIS PHOTO:



NOW ON THE MAIN BOARD LOOK FOR EPROM 93C46, AND AS WE CAN SEE ON THE PHOTOS CLIP IT AND MODIFY, ALWAYS CHECKING PIN 1:



WE CAN ALSO USE C7 CABLE, AND WITH THE PHOTO BELOW WE CAN SOLDER CABLE LEADS ACCORDING TO COLOUR:

