

# ENIGMA USER MANUAL

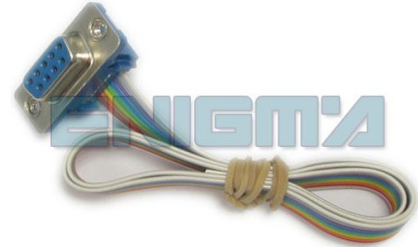
## HYUNDAI I10

### DASHBOARD PHOTO:



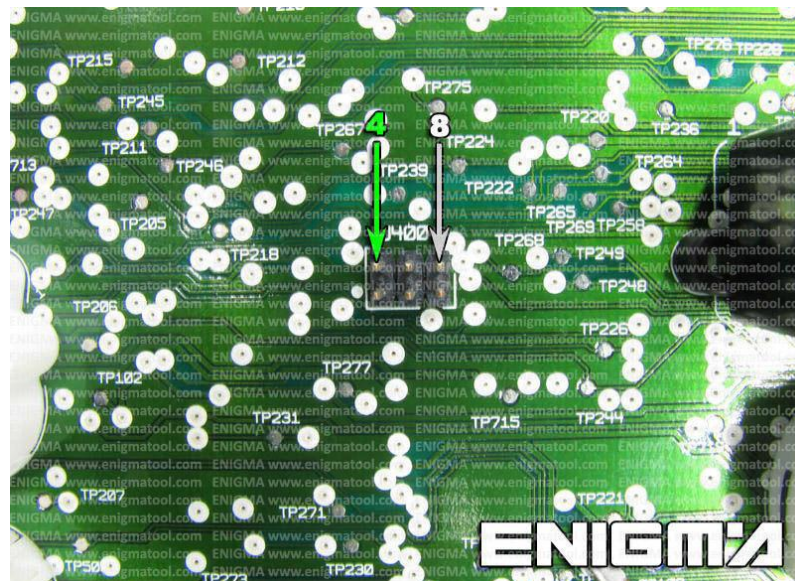
### REQUIRED CABLE(s):

**C7**



### FOLLOW THIS INSTRUCTION STEP BY STEP:

1. Remove the dashboard and open it carefully.
2. Remove the back side of the dash to get to the main board and identify it.
3. Solder cable C7 to the PLUG as shown on PHOTO1.
4. Solder cable C7 to the POINTS as shown on PHOTO2.
5. If there is **no PLUG** on the board solder as shown on **PHOTO3**.
6. Make sure that the connection you made is secure.
7. Use the EDITOR to save memory backup data.
8. Press the READ KM button and check if the value shown on the screen is correct.
8. Now you can use the CHANGE KM function.



**PHOTO 1:** Solder cable C7 according to the colors like shown on the photo above.

FOR MORE INFORMATION

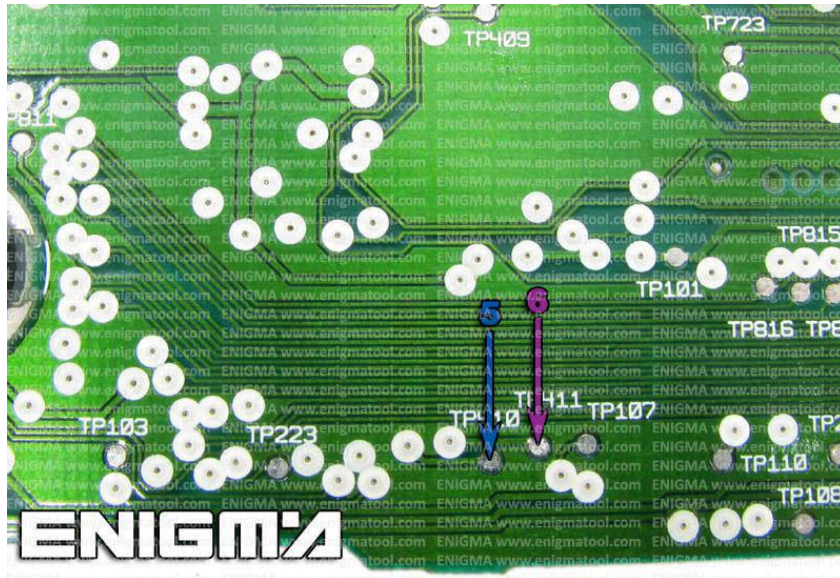
Call **0034 983 359 787** or visit [www.enigmatool.com](http://www.enigmatool.com)

DIAGCARELECTRONICS S.L. Ebanistería 1A, 47610 Zaratán, Spain

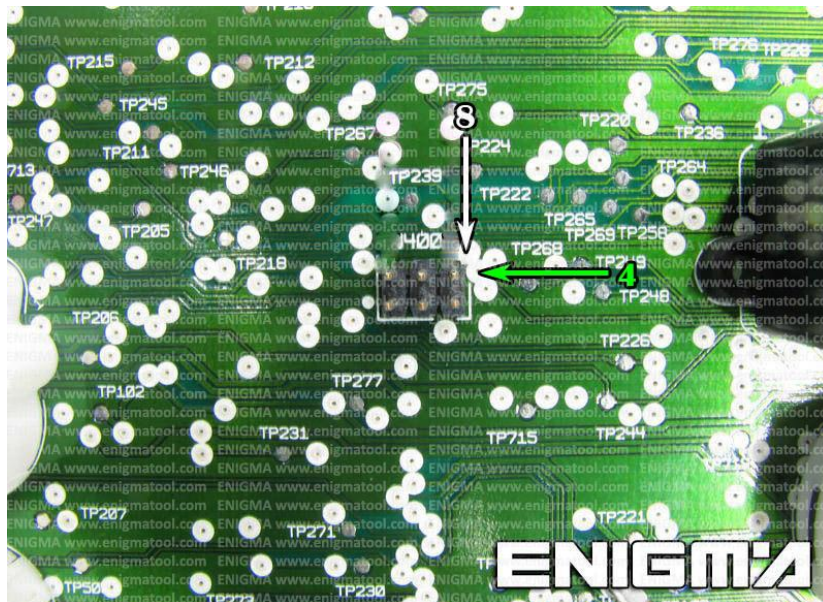
  
**Diagcar** Electronics S.L.

# ENIGMA USER MANUAL

## HYUNDAI I10



**PHOTO 2:** Solder cable C7 according to the colors like shown on the photo above.



**PHOTO 3:** If there is no PLUG on the board solder cable C7 according to the colors like shown on the photo above.

### LEGAL DISCLAIMER:

**DIAGCAR ELECTRONICS S.L. does not take any legal responsibility of illegal use of any information stored in this document. Copying, distributing or taking any action in reliance with the content of this information is strictly prohibited.**

FOR MORE INFORMATION

Call **0034 983 359 787** or visit [www.enigmatool.com](http://www.enigmatool.com)

DIAGCARELECTRONICS S.L. Ebanistería 1A, 47610 Zaratán, Spain

