

ENIGMA USER MANUAL

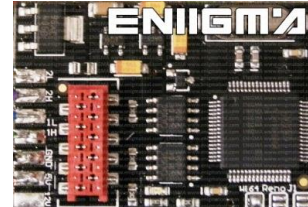
MERCEDES ML-W164 EZS NEC

EZS:



REQUIRED:

ULTIMATE PRO KEY



FOLLOW THIS INSTRUCTION STEP BY STEP:

1. Remove the EZS module from the car and open it **VERY CAREFULLY!**
2. First **REMOVE COMPONENT CAREFULLY** and solder cables according to colors to the points on board as shown on PHOTO1.
! Save the removed component until your job is completed !
3. Solder cables according to colors to **ULTIMATE PRO KEY** as shown on PHOTO2.
! Remember to make BRIDGE FOR W164 like shown on PHOTO2 !
4. Make sure that the connection you made is safe and secure.
5. Use silicone to mount **PRO KEY** on EZS board.
6. See example on PHOTO3 to make sure that you have done a good job mounting **ULTIMATE PRO KEY CORRECTLY** inside EZS.

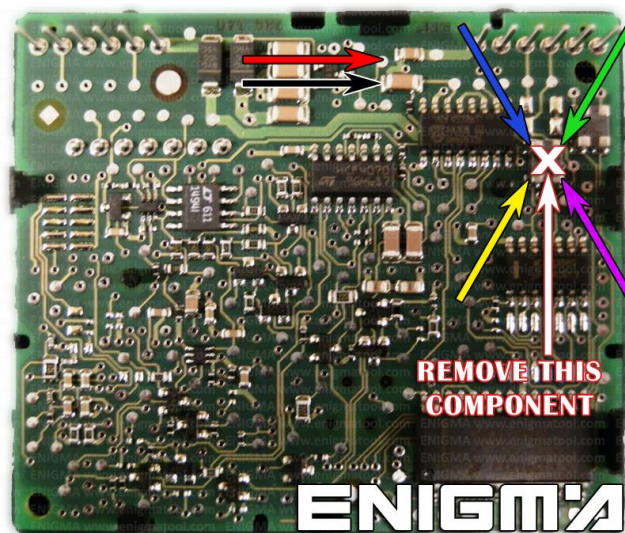


PHOTO 1: Solder cables according to the colors like shown on the photo above.

FOR MORE INFORMATION

Call **0034 983 359 787** or visit www.enigmatool.com

DIAGCARELECTRONICS S.L. Ebanistería 1A, 47610 Zaratán, Spain

ENIGMA USER MANUAL
MERCEDES ML-W164 EZS NEC

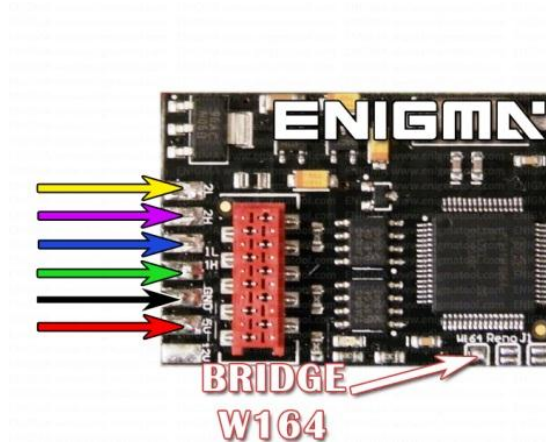


PHOTO 2: Solder cables according to the colors like shown on the photo above.

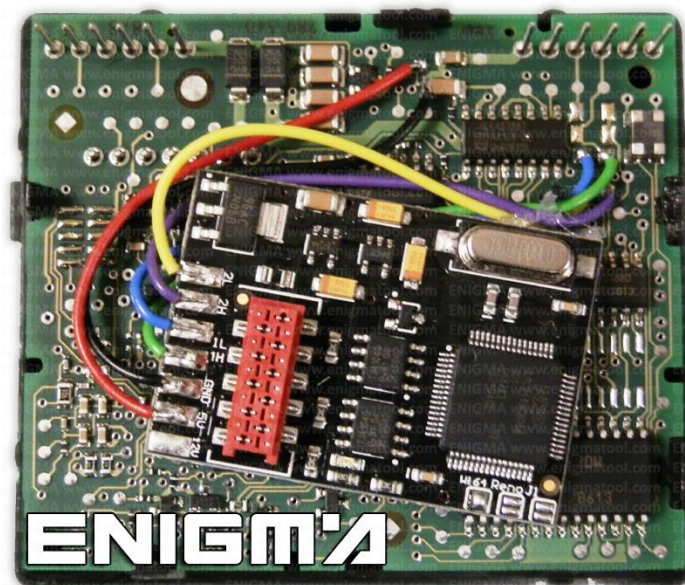


PHOTO 3: Example photo.

LEGAL DISCLAIMER:

DIAGCAR ELECTRONICS S.L. does not take any legal responsibility of illegal use of any information stored in this document. Copying, distributing or taking any action in reliance with the content of this information is strictly prohibited.

FOR MORE INFORMATION

Call **0034 983 359 787** or visit www.enigmatool.com

DIAGCARELECTRONICS S.L. Ebanistería 1A, 47610 Zaratán, Spain