

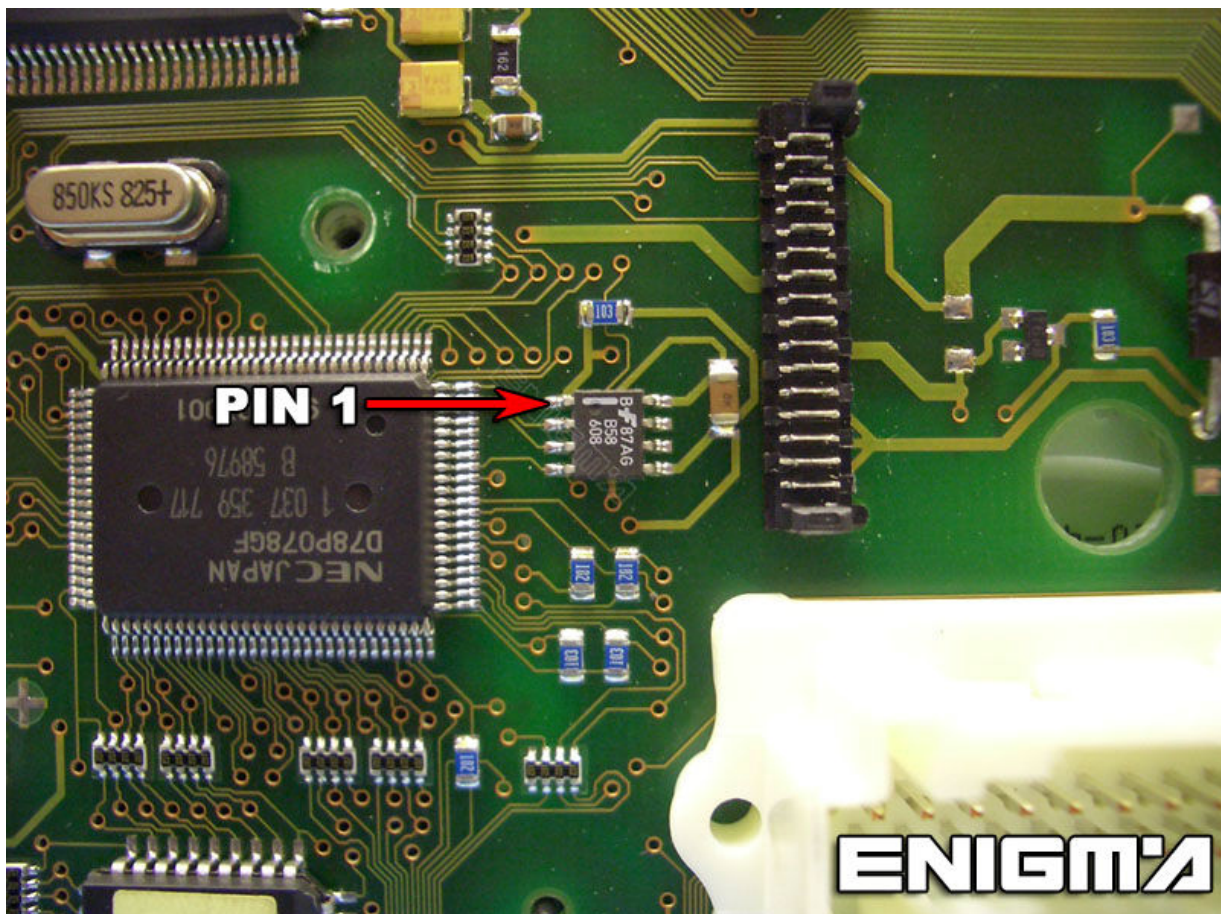
# MERCEDES BENZ S-W220 DASH



DEPENDING FROM YEAR WE CAN FIND SOME DIFFERENT VERSIONS FROM BOARDS. FROM 06/2001 WE HAVE TO MODIFY EZS TOO.

## VERSION 1:

USE CABLE C4, OPEN BACK PLASTIC COVER FROM DASH, BE CAREFULL, THEN YOU CAN LOCATE EPROM B58, AND CLIP IT CHECKING **PIN 1** AS SHOWN OF BELOW PHOTO:



VERSION 2:

USE CABLE C4, OPEN ALL DASH COMPLETE, BE MUCH CAREFULLY, SPECIALLY WITH MAIN NAIL. THEN YOU CAN LOCATE EPROM 24C04, AND CLIP IT CHECKING PIN 1 AS SHOWN OF BELOW PHOTO:

