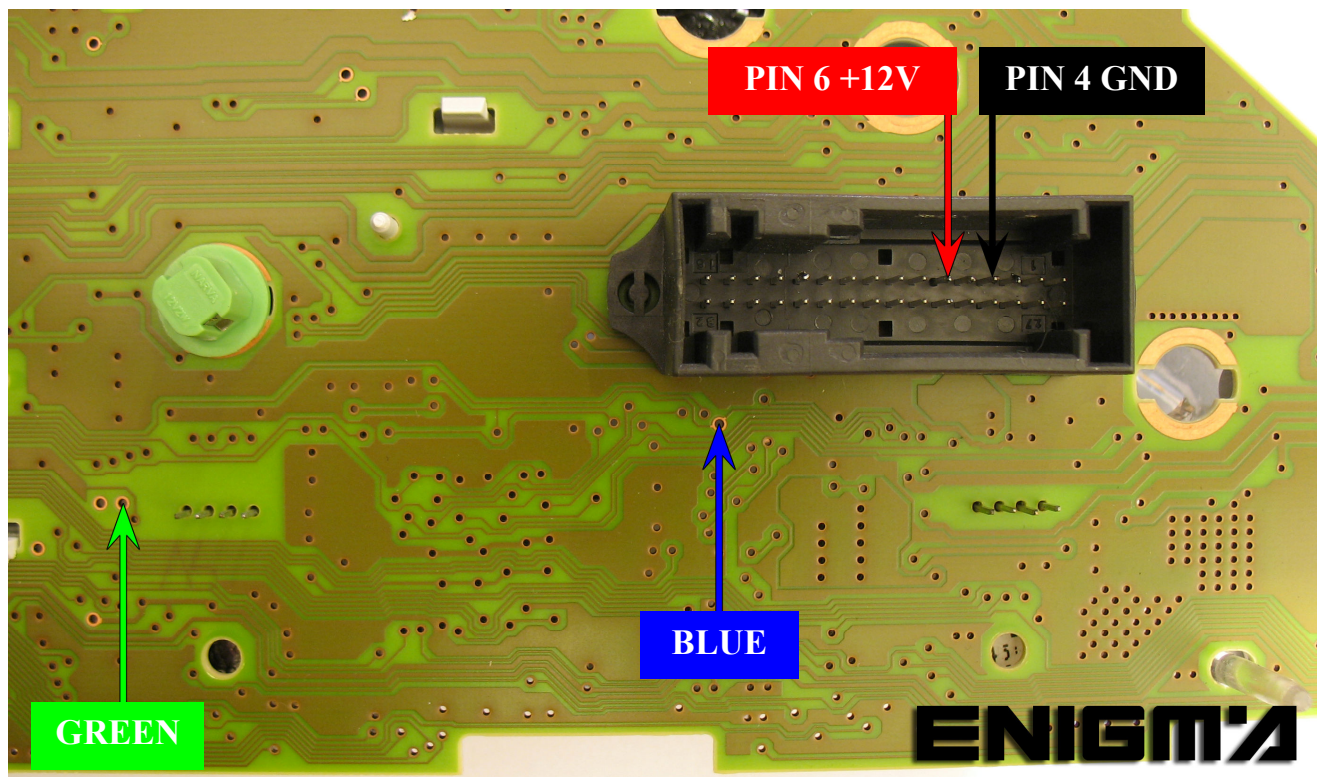


# MERCEDES BENZ Vaneo DASH



USE CABLE C12, REMOVE BACK PLASTIC COVER FROM DASH, THEN CONNECT OR SOLDER CABLE LEADS ACCORDING TO COLOURS AS SHOWN ON BELOW PHOTOS:

## VERSION 1:





VERSION 2:

