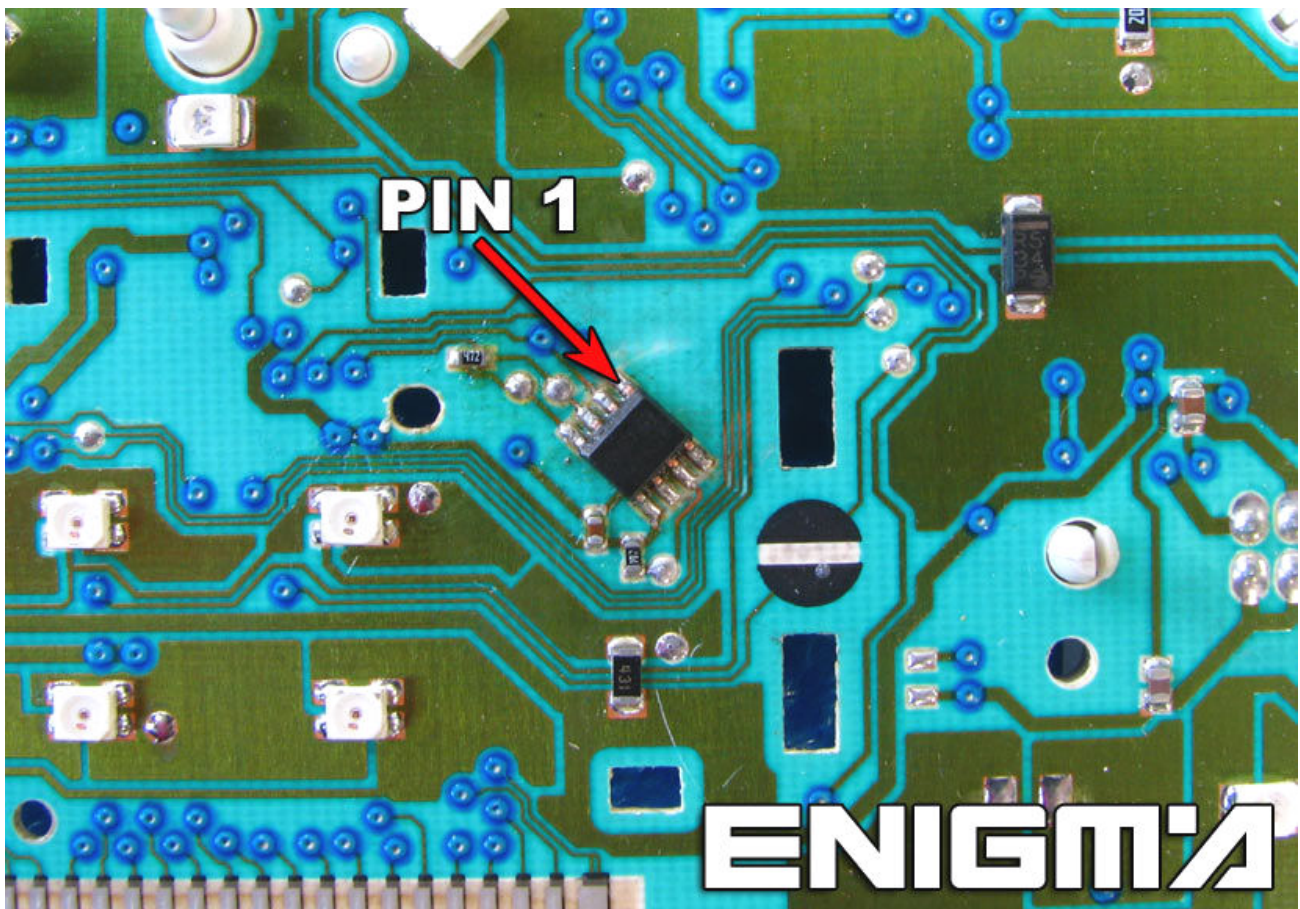


OPEL VECTRA FROM 2002



USE CABLE C4, OPEN DASH COMPLETELY, PLEASE MAKE IT CAREFULLY, THEN LOCATE EEPROM 93C66 AND CLIP IT CHECKING PIN 1 AS SHOWN OF PHOTO BELOW:



THERE ARE 2 DIFFERENT VERSIONS OF DASHBOARDS, WITH ONE OR TWO SCREENS ON IT, BUT EPROM LOCATION IS SAME IN BOTH.