

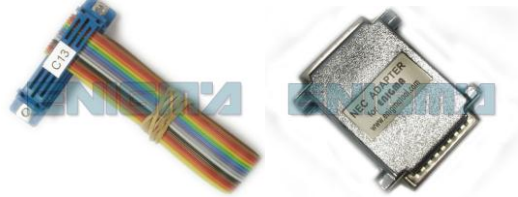
ENIGMA USER MANUAL

PEUGEOT 307 2002-2005 NEC

DASHBOARD PHOTO:



REQUIRED CABLE(S): C13 + A1



FOLLOW THIS INSTRUCTION STEP BY STEP:

1. Remove the dashboard and open it carefully.
2. Remove the back side and nails of the dash to get to the main board, look PHOTO3.
3. First solder cables as shown on PHOTO 1.
4. Second solder cables as shown on PHOTO2.
Make sure that the connection you made is secure.
5. Before changing anything use EEPROM EDITOR to save memory backup data.
6. Press the READ KM button and check if the value shown on the screen is correct.
7. Now you can use the CHANGE KM function.

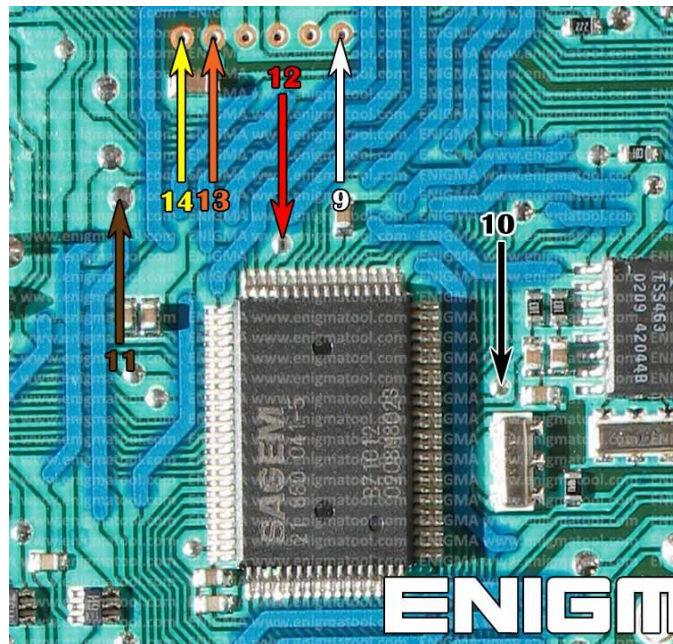


PHOTO 1: Solder C13 cables according to the colors shown on the picture above.

FOR MORE INFORMATION

Call **0034 983 359 787** or visit www.enigmatool.com

DIAGCARELECTRONICS S.L. Ebanistería 1A, 47610 Zaratán, Spain


Diagcar S.L.

ENIGMA USER MANUAL

PEUGEOT 307 2002-2005 NEC

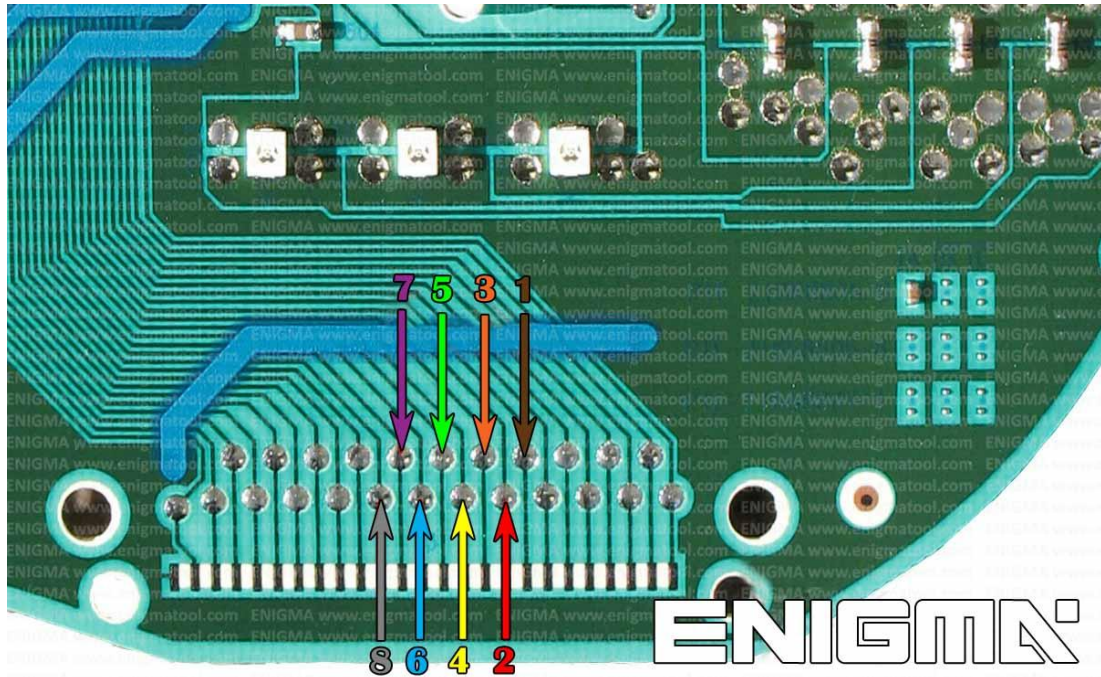


PHOTO 2: Solder C13 cables according to the colors shown on the picture above.



PHOTO 3: Look to identify the dash board.

LEGAL DISCLAIMER:

DIAGCAR ELECTRONICS S.L. does not take any legal responsibility of illegal use of any information stored in this document. Copying, distributing or taking any action in reliance with the content of this information is strictly prohibited.

FOR MORE INFORMATION

Call **0034 983 359 787** or visit www.enigmatool.com

DIAGCARELECTRONICS S.L. Ebanistería 1A, 47610 Zaratán, Spain

