

# ENIGMA USER MANUAL

## PIAGGIO BEVERLY 200

### DASHBOARD PHOTO:

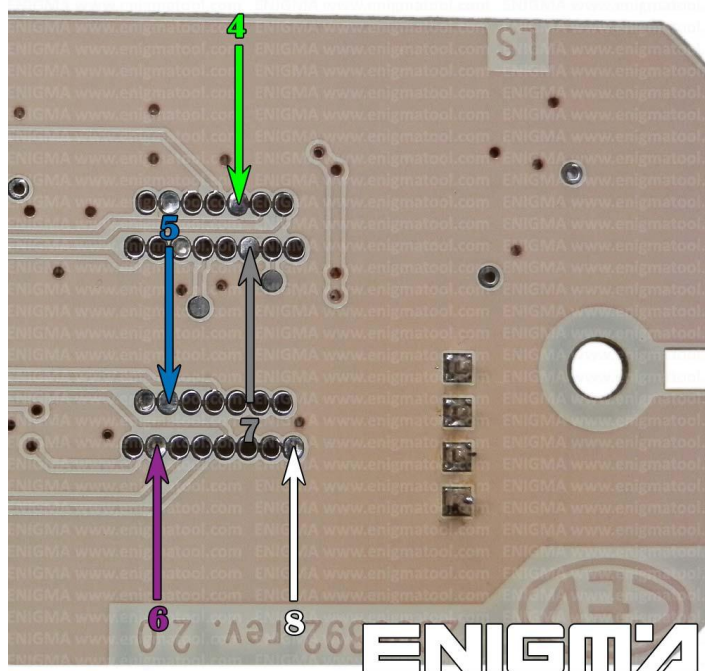


### REQUIRED CABLE(s): C7



### FOLLOW THIS INSTRUCTION STEP BY STEP:

1. Remove the dashboard and open it carefully.
2. Look at PHOTO1 and solder C7 cables according to colors.
3. Make sure that the connection you made is secure.
4. Press the READ EEP button and save EEPROM memory backup data.
5. Press the READ KM button and check if the value shown on the screen is correct.
6. Now you can use the CHANGE KM function.



**PHOTO 1:** Solder C7 cables according to the photo above.

FOR MORE INFORMATION

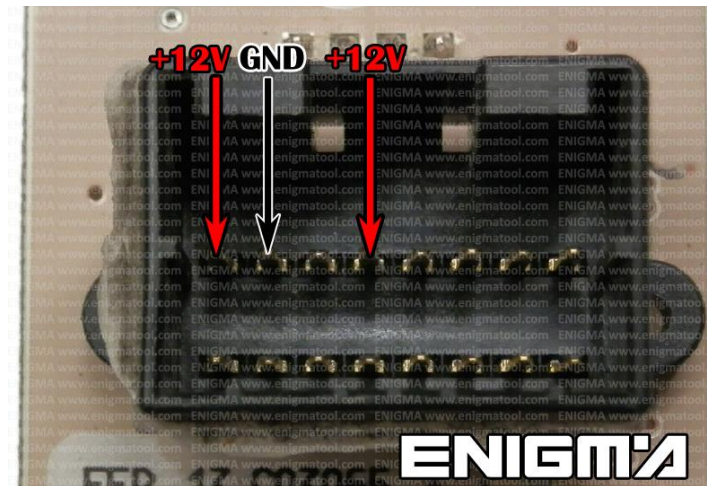
Call **0034 983 359 787** or visit [www.enigmatool.com](http://www.enigmatool.com)

DIAGCARELECTRONICS S.L. Ebanistería 1A, 47610 Zaratán, Spain

  
**Diagcar** S.L.

# ENIGMA USER MANUAL

## PIAGGIO BEVERLY 200



**PHOTO 2: Power supply to check old or new data value.**

### **LEGAL DISCLAIMER:**

**DIAGCAR ELECTRONICS S.L. does not take any legal responsibility of illegal use of any information stored in this document. Copying, distributing or taking any action in reliance with the content of this information is strictly prohibited.**

FOR MORE INFORMATION

Call **0034 983 359 787** or visit [www.enigmatool.com](http://www.enigmatool.com)

DIAGCAR ELECTRONICS S.L. Ebanistería 1A, 47610 Zaratán, Spain

