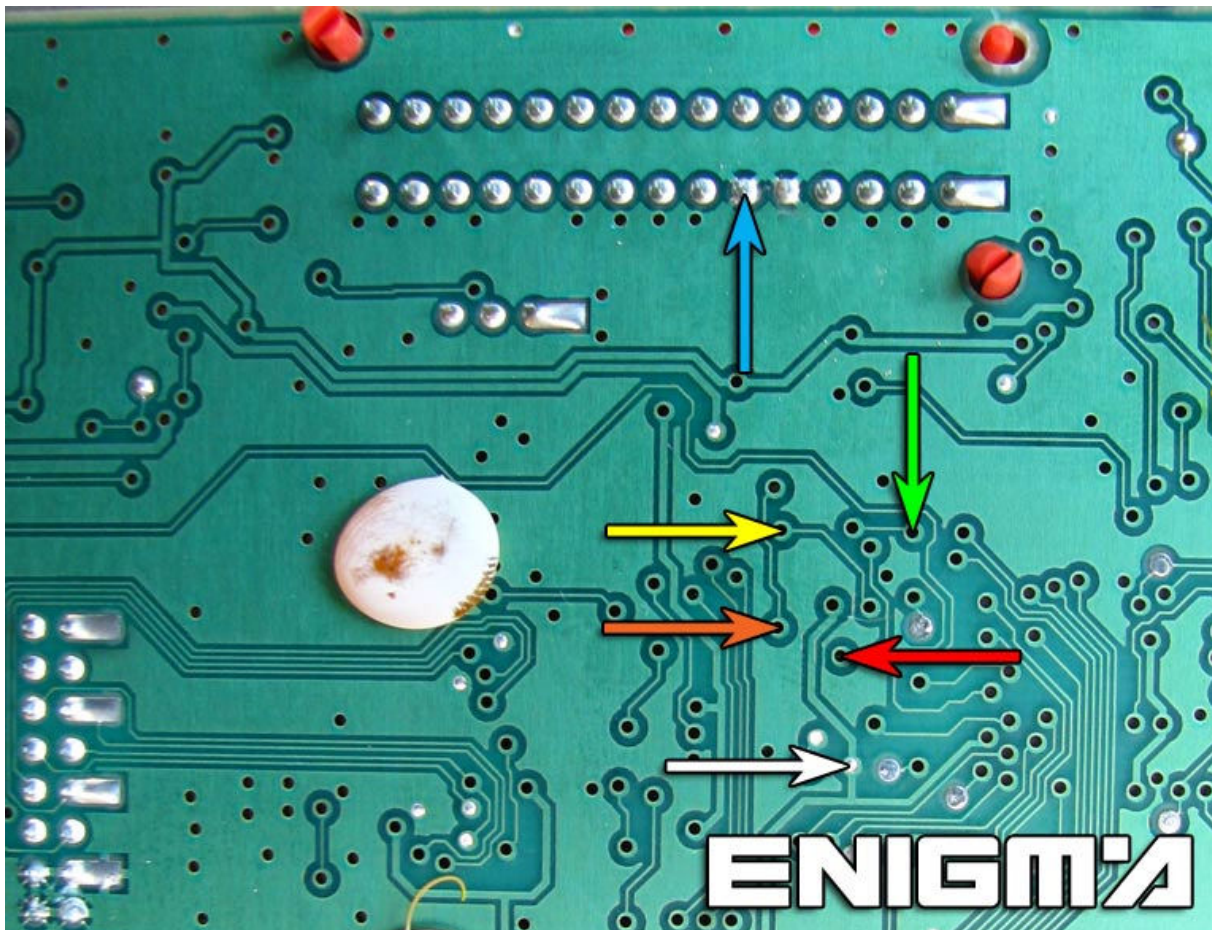


# RENAULT ESPACE DASH FROM 2003



USE C7 CABLE, AFTER REMOVE DASH FROM CAR, TAKE OFF PLASTICS COVERS, ON THE BACK SIDE OF MAIN BOARD LOCATE POINTS LIKE IN PHOTO BELOW AND SOLDER CABLE LEADS AS IT SHOWS TO US:

## VERSION 1:



VERSION 2:

