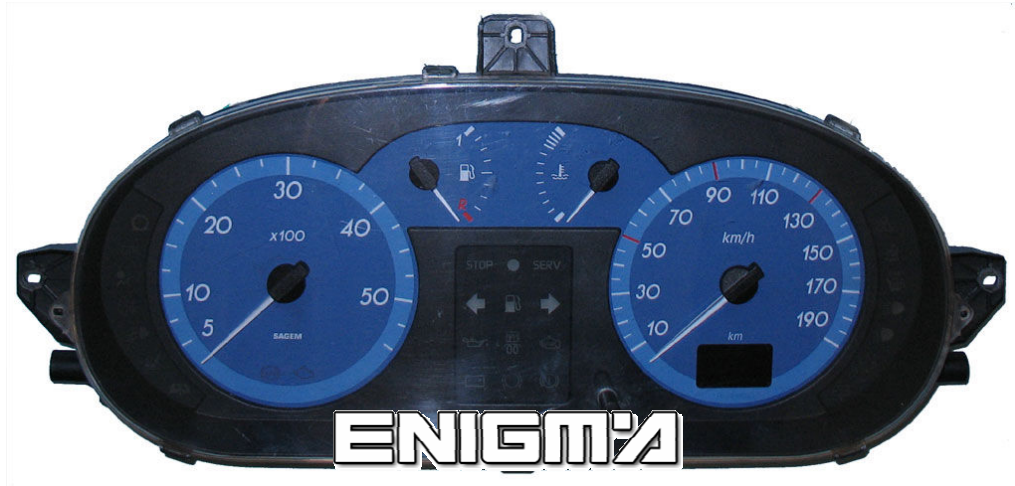
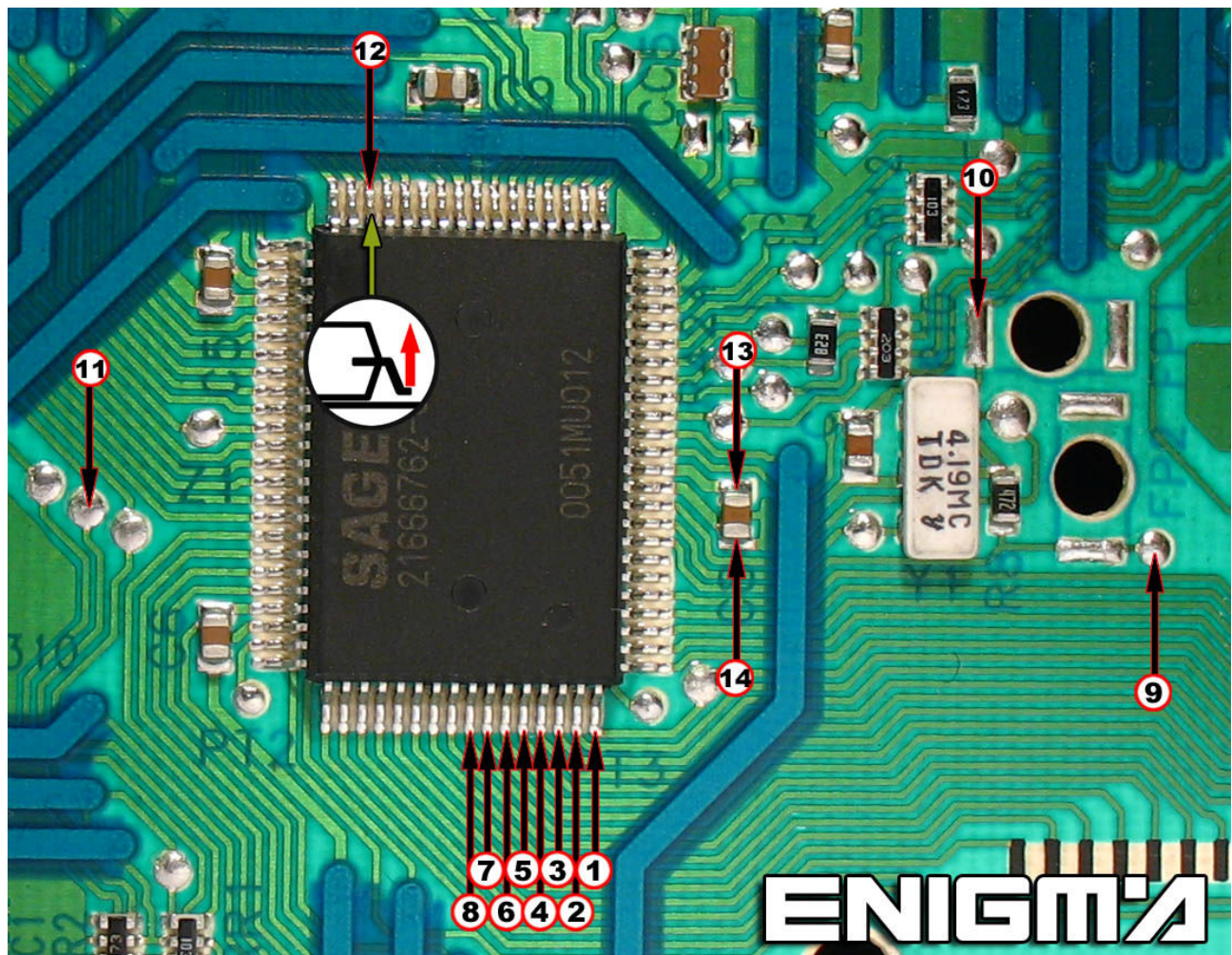


RENAULT MASTER NEC



USE **CABLE C13** ALWAYS CONNECTED TO **A1 ADAPTER**. OPEN COMPLETELY DASH, WE HAVE TO REMOVE NAILS, THEY HAVE NO COMPLICATION, THEN CONNECT OR SOLDER CABLE LEADS ACCORDING TO NUMBER AS SHOWN IN NEXT PHOTO:

VERSION 1:



VERSION 2:

