

REVTRONIC

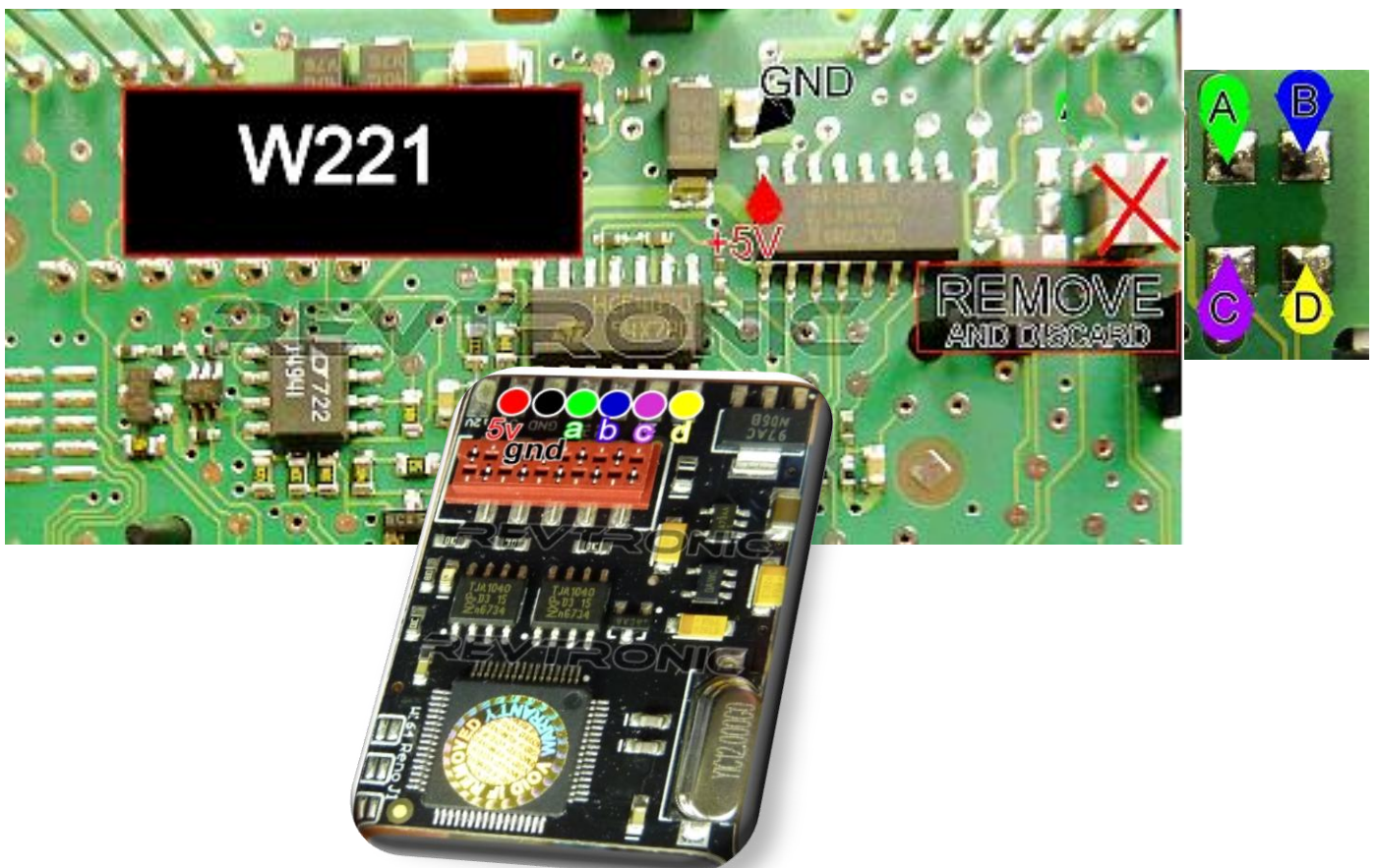
ULTIMATE PRO KEY

There are 5 options available on the Ultimate Pro Key :

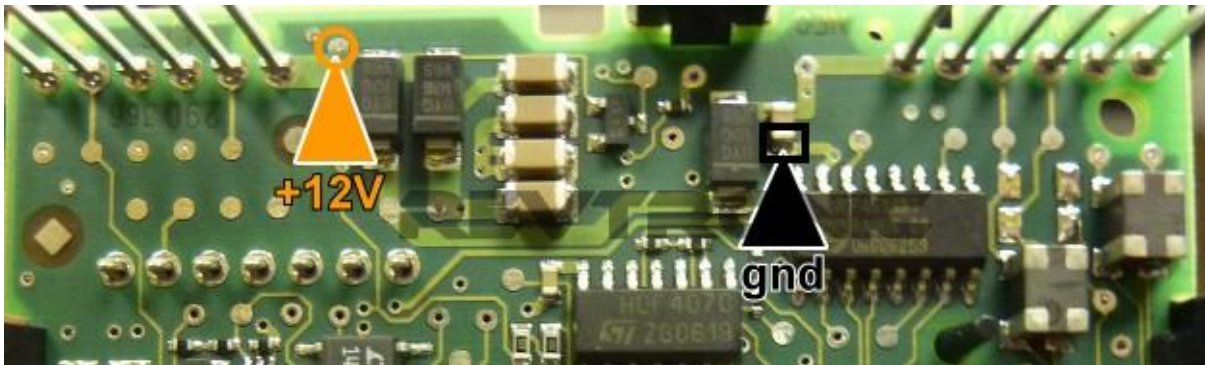
Option	Type of Fitting	Models	Action
1 Click to view	Fit <u>inside</u> the EZS	Mercedes S Class W221, C Class W204, E Class W212	None
2 Click to view	Fit <u>inside</u> the EZS	Mercedes ML W164, R Class W251, GL W164	Bridge points marked W164
3 Click to view	Fit <u>outside</u> the wiring loom leading to the EZS	Mercedes S Class W221, C Class W204, E Class W212	None
4 Click to view	Fit <u>outside</u> the wiring loom leading to the EZS	Mercedes ML W164, R Class W251, GL W164	Bridge points marked W164
5 Click to view	Fit <u>inside</u> the dash on Renault	Renault Megane 3, Laguna 3 and Scenic 3	Bridge points marked Reno

Option 1 – Fit inside EZS

Mercedes S Class W221 Version 1



If you encounter problems with the installation, then please remove the **5v** cable and connect **12v** as shown below :

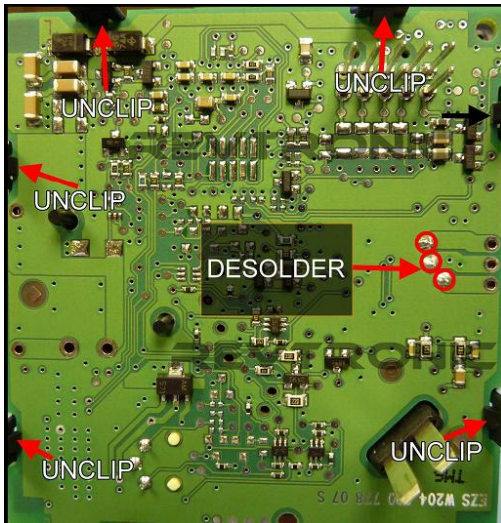


Mercedes S Class Version 2  Mercedes-Benz



Mercedes C Class W204 and E Class W212 (Black EZS) 

Desolder the 3 points, then gently unclip the points as shown below.



Remove the PCB and locate the brown component. Remove this component and reassemble the board.




Mind the switch shown above.

Be careful when putting back the PCB.

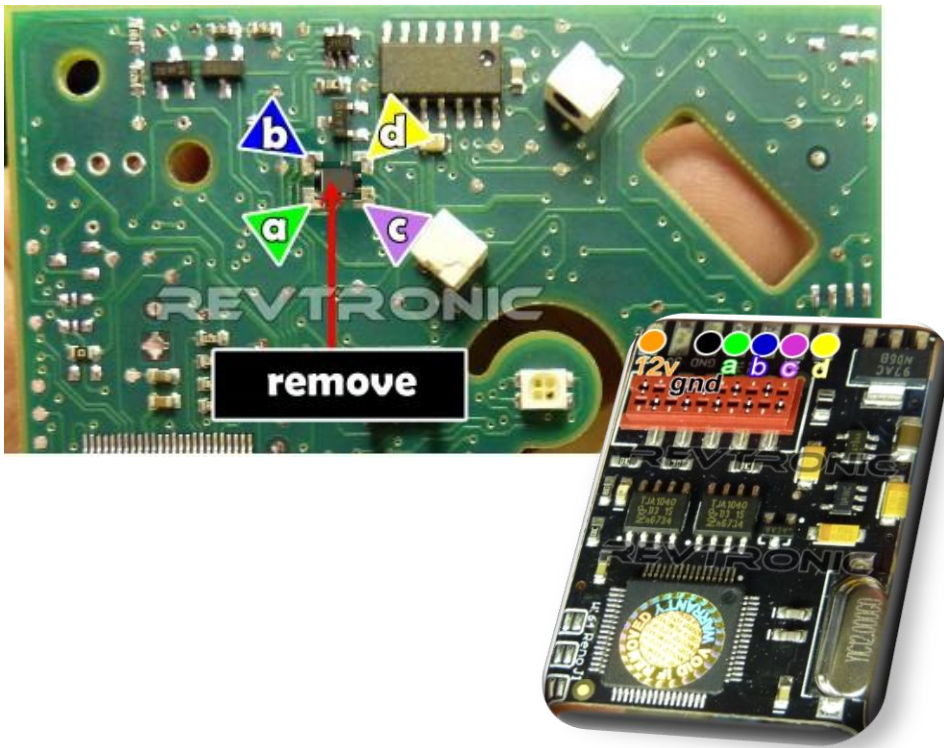
Also Watch solder points C + D when soldering.



Mercedes E Class, W212 – (Grey Back EZS)  Mercedes-Benz

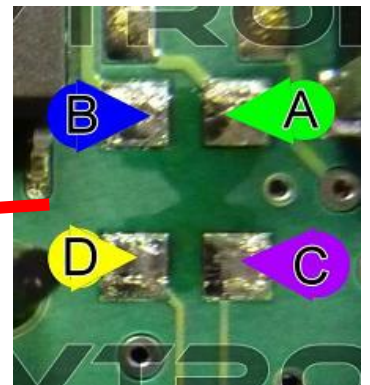
Gently unclip to access the other side of the board. Locate brown component and remove.





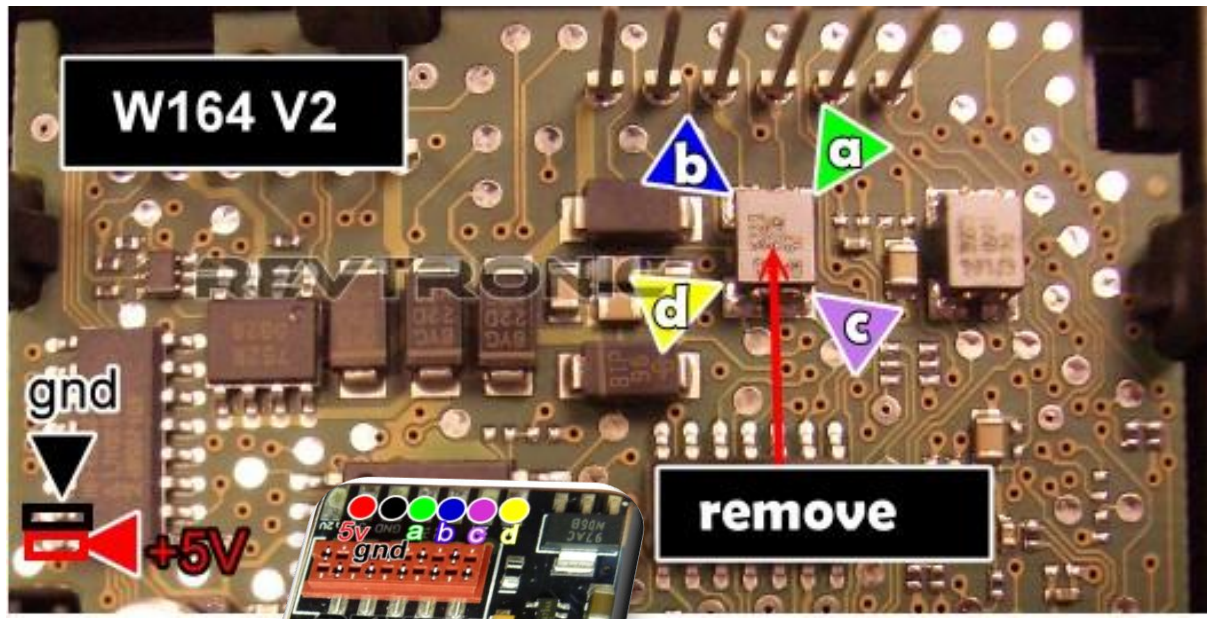
Option 2 – Fit Inside EZS 

Mercedes ML W164, R Class W251, GL W164 

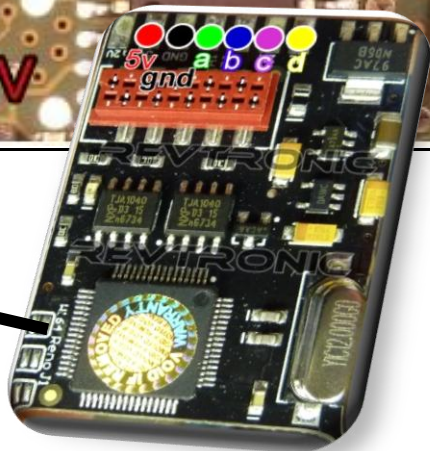


Bridge for W164





Bridge for W164

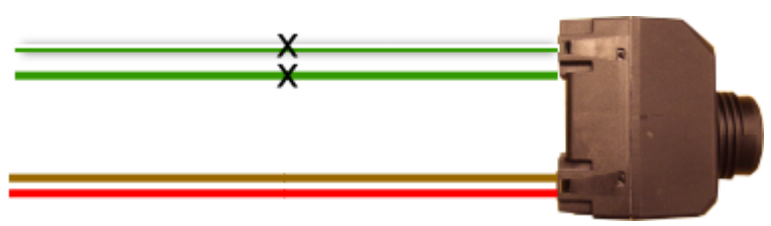


Option 3 – Fit outside the wiring loom leading to the EZS 

Mercedes S Class W221, C Class W204, E Class W212 

Below is typically how an ezs is wired from the car to the EZS. We need to cut the CAN High/Low wires leading into the EZS.

LOCATE AND CUT WIRES MARKED X



To make a good job, ensure that the ULTIMATE PRO KEY is fitted as far back as possible.

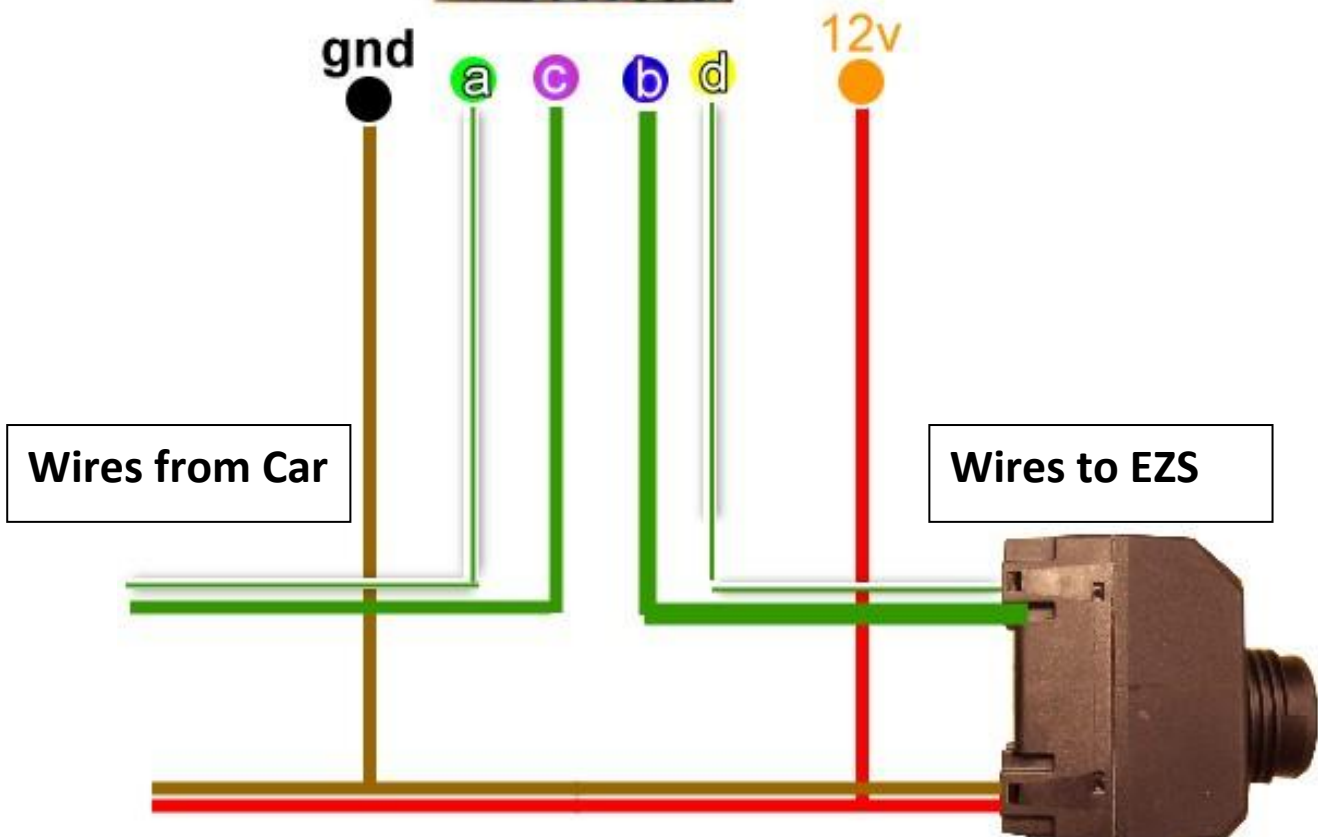
To use the ULTIMATE PRO KEY all you need to do is to locate the GREEN+GREEN/WHITE cable which leads in to the EZS plug. These are normally paired together.

Cut the GREEN wire first, then cut the GREEN/WHITE wire (Make sure no wires touch !).

Connect as in diagram below, once you have connected the GREEN+GREEN/WHITE wires to the PRO KEY, connect the BROWN, RED wires last.

The LED on the ULTIMATE PRO KEY should light up.

Look at the diagram below, and wire in according to the model that you have.



Wiring colours.

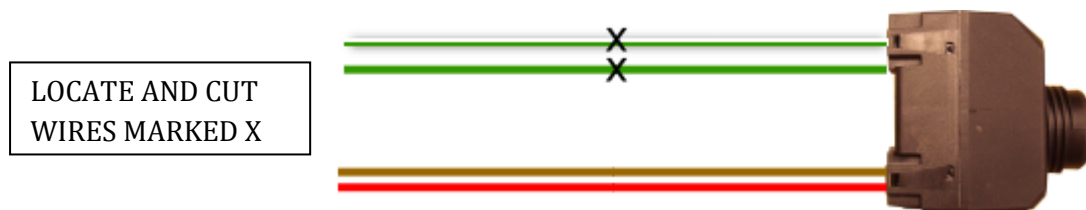
Most Mercedes EZS have the same coloured wires going in, if for any reason you cannot find the wires for the RED and BROWN , then follow the table below.

PRO KEY	W212, E CLASS	W221, S CLASS	W204, C CLASS	Alternatively
Orange +12V	RED/BLUE STRIPE	PLUG A – PIN 6 RED	PLUG C – PIN1 RED	Take red from OBD Port
BLACK - GND	THICK BROWN on 2 nd plug.	PLUG A – PIN 2 BROWN	PLUG B –PIN10 BROWN	Take Brown from OBD Port

Option 4 – Fit outside the wiring loom leading to the EZS

Mercedes ML W164, R Class W251, GL W164

Below is typically how an ezs is wired from the car to the EZS. We need to cut the CAN High/Low wires leading into the EZS.



To make a good job, ensure that the ULTIMATE PRO KEY is fitted as far back as possible.

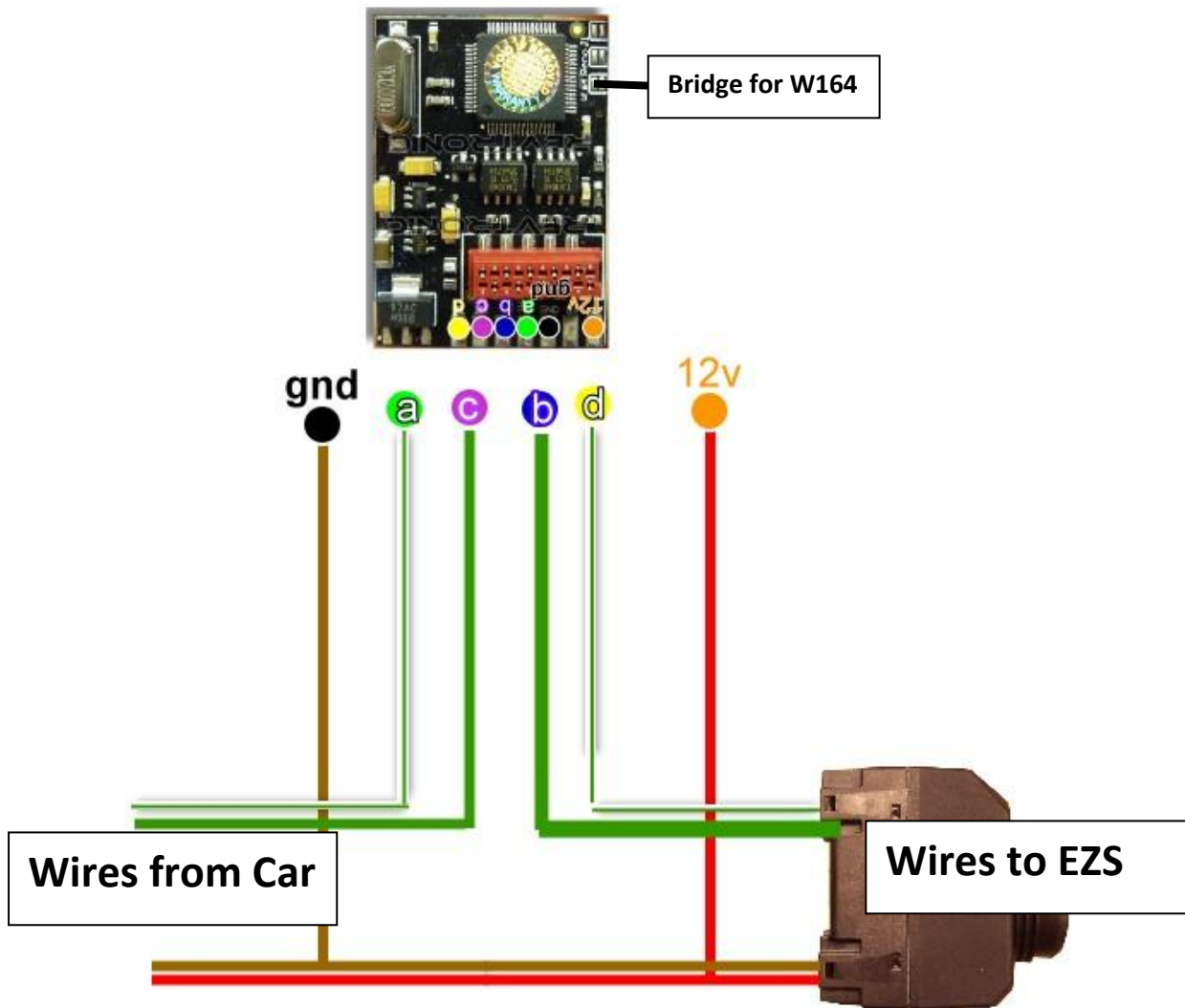
To use the ULTIMATE PRO KEY all you need to do is to locate the GREEN+GREEN/WHITE cable which leads in to the EZS plug. These are normally paired together.

Cut the GREEN wire first , then cut the GREEN/WHITE wire (Make sure no wires touch !).

Connect as in diagram below, once you have connected the GREEN+GREEN/WHITE wires to the PRO KEY, connect the BROWN , RED wires last.

The LED on the ULTIMATE PRO KEY should light up.

Look at the diagram below, and wire in according to the model that you have.



Wiring colours.

Most Mercedes EZS have the same coloured wires going in, if for any reason you cannot find the wires for the RED and BROWN , then follow the table below.

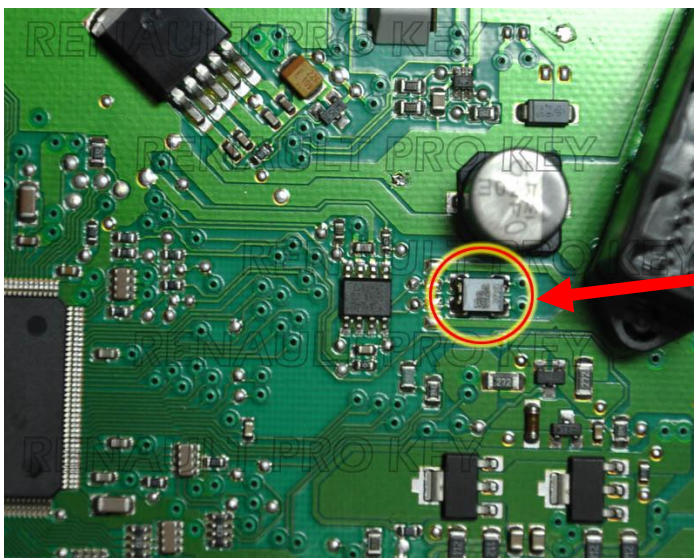
PRO KEY	W212, E CLASS	W221, S CLASS	W204, C CLASS	Alternatively
Orange +12V	RED/BLUE STRIPE	PLUG A – PIN 6 RED	PLUG C – PIN1 RED	Take red from OBD Port
BLACK - GND	THICK BROWN on 2 nd plug.	PLUG A – PIN 2 BROWN	PLUG B –PIN10 BROWN	Take Brown from OBD Port

Option 5 – Fit Inside Dash

Renault Megane 3, Laguna 3 and Scenic 3

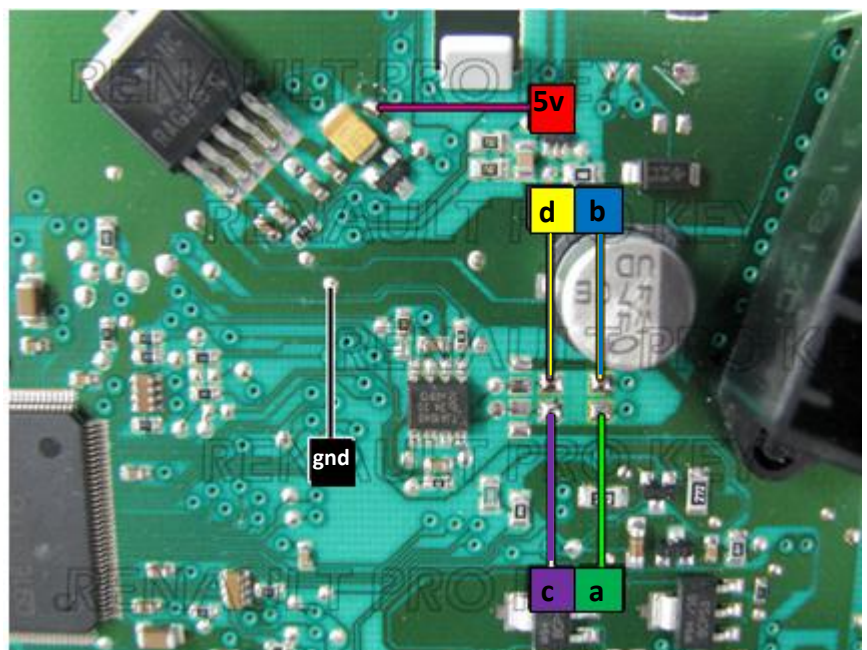
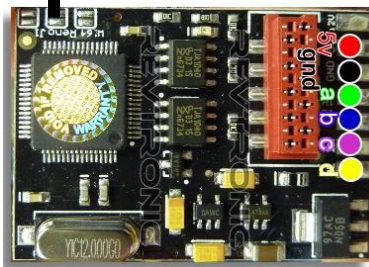
Megane3

1. Remove dashboard from car and open back cover carefully to get full access to dashboard PCB.
2. Change mileage in 24C16 eeprom.
3. Remove and discard electronic component showed in the photo below. This component will be not soldered back to the PCB anymore.

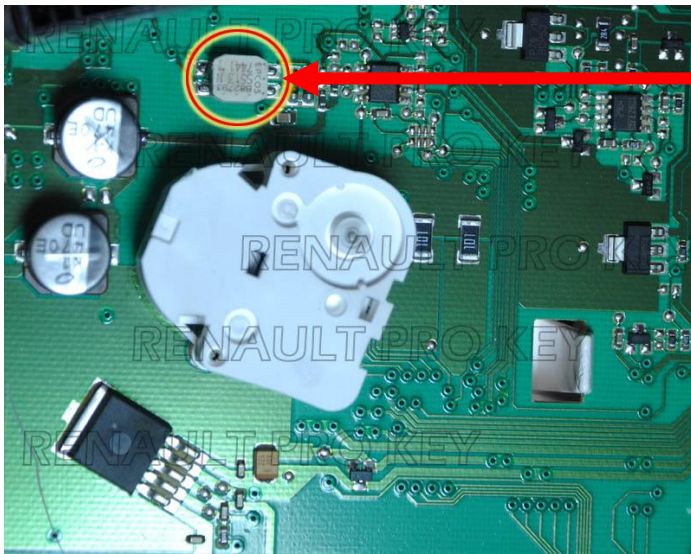


Remove this component

Bridge Point RENO

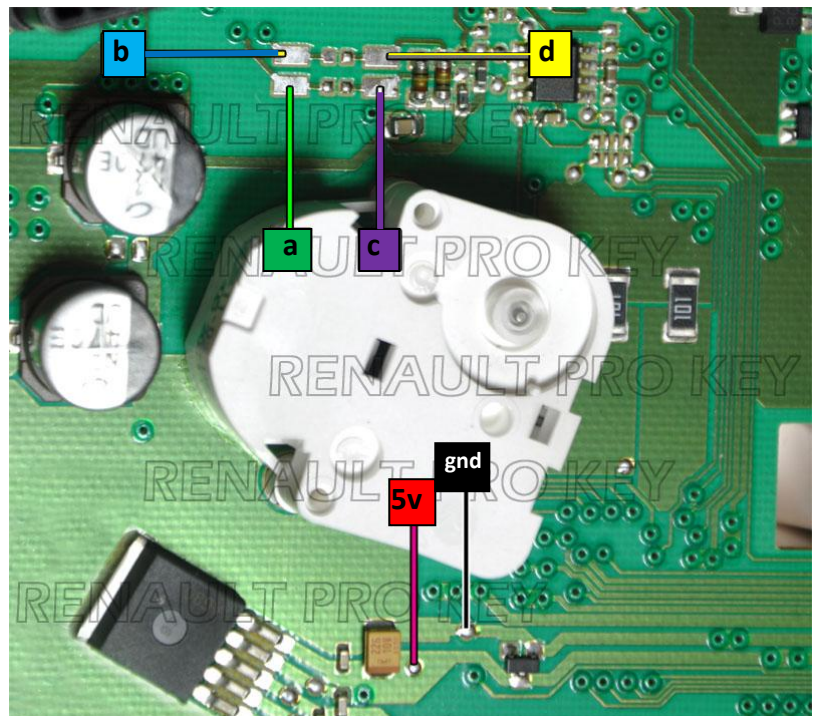
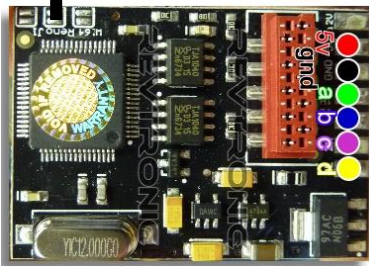


1. Remove dashboard from car and open back cover carefully to get full access to dashboard PCB.
2. Change mileage in 24C16 eeprom.
3. Remove and discard electronic component showed in the photo below. This component will be not soldered back to the PCB anymore.



Remove this component

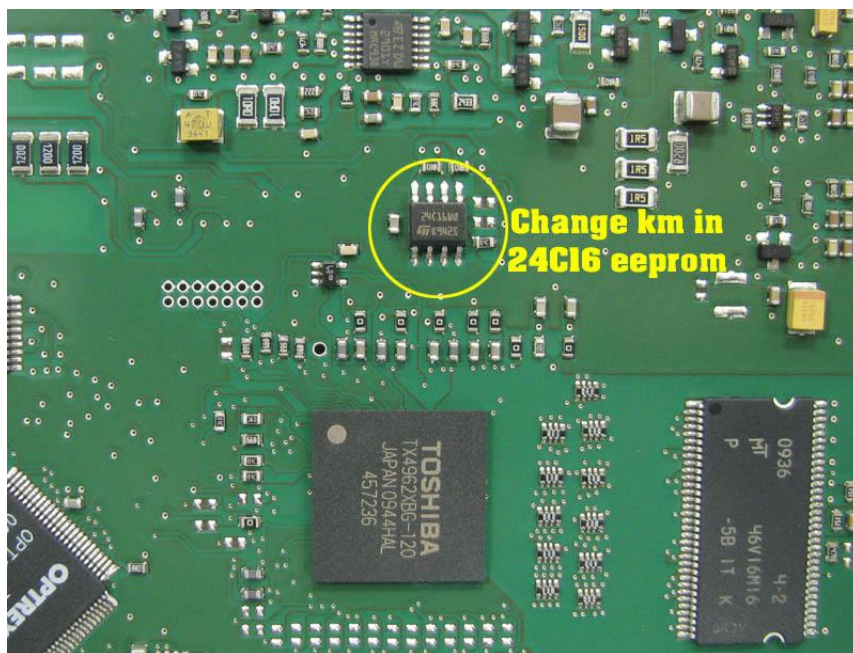
Bridge Point RENO



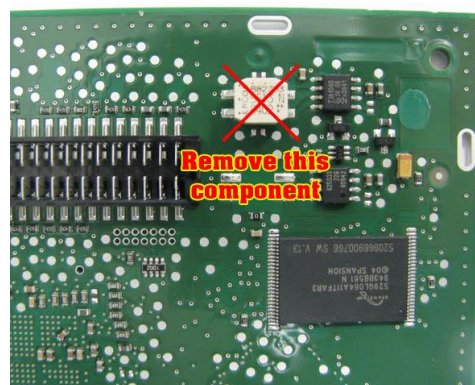
1. Remove dashboard from car and open back cover carefully to get full access to dashboard PCB.



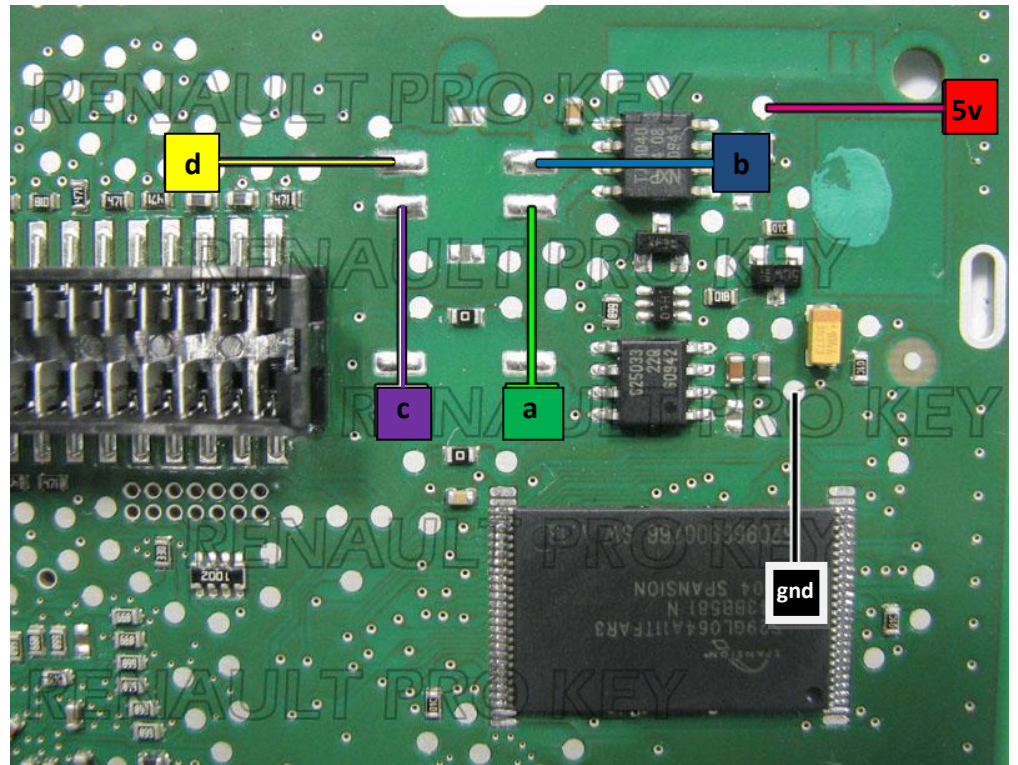
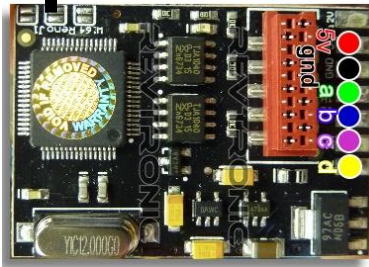
2. Change mileage in 24C16 eeprom.



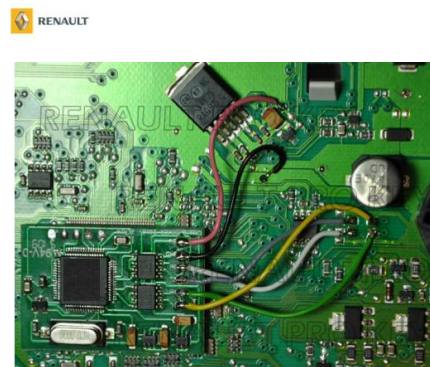
4. Remove and discard electronic component showed in the photo below. This component will be not soldered back to the PCB anymore.



Bridge Point RENO



Typical Installation:



REVTRONIC

www.enigmatool.co.uk