

SKODA SUPERB FROM 2008

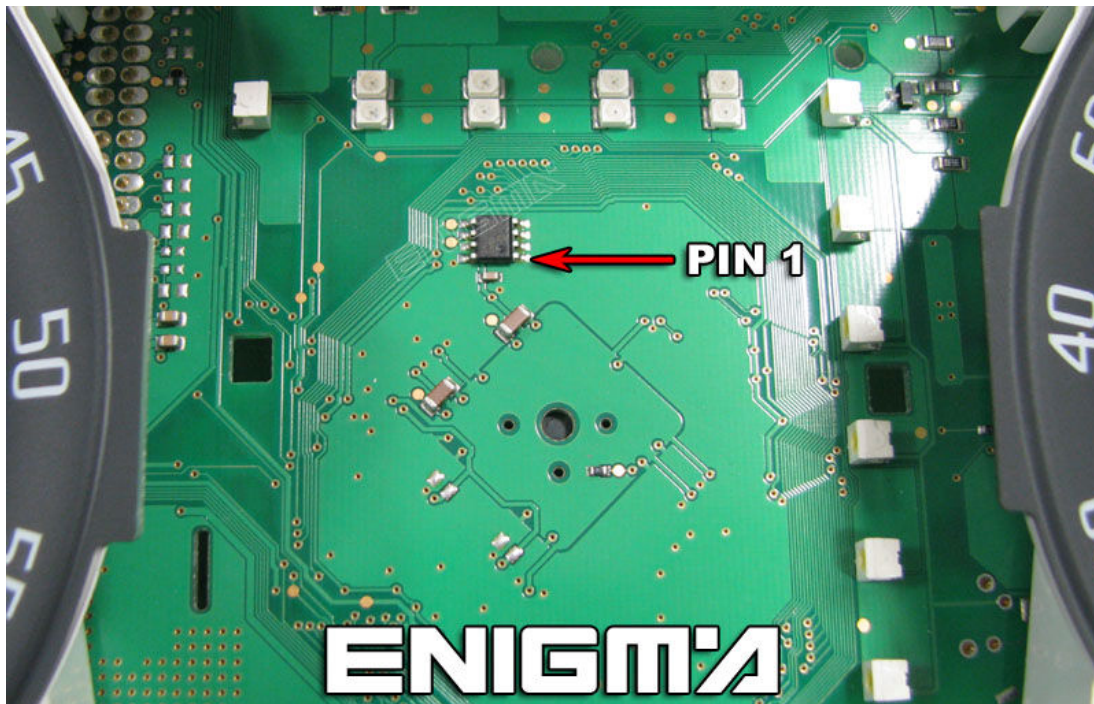
THOSE CARS HAVE INSIDE NEC MICRO INSIDE AND THEY HAVE A SPECIAL PROCESS TO WORK ON:

1. REMOVE DASH FROM CAR:



2. OPEN ALL DASHBOARD CAREFULLY AND LOCATE EPROM.

3. CLIP IT USING CABLE C4 AS BELOW PHOTO SHOW TO US AND NOW ON ENIGMA SELECT ON MENU CAR PROGRAM, THEN PRESS READ KEY BUTTOM AND ON THE MENU CANCEL BUTTOM.



4. WAIT TILL PROCESS IN FINISH.

5. MOUNT ALL DASH COMPLETELY.

6. PUT IT BACK TO CAR.

7. USING CABLE C1, CONNECT ENIGMA TO CAR, INGITION HAVE TO BE ON.

8. ON MENU SELECT ONE MORE TIME CAR PROGRAM.

9. NOW U CAN READ OR CHANGE DATA AS U WANT.