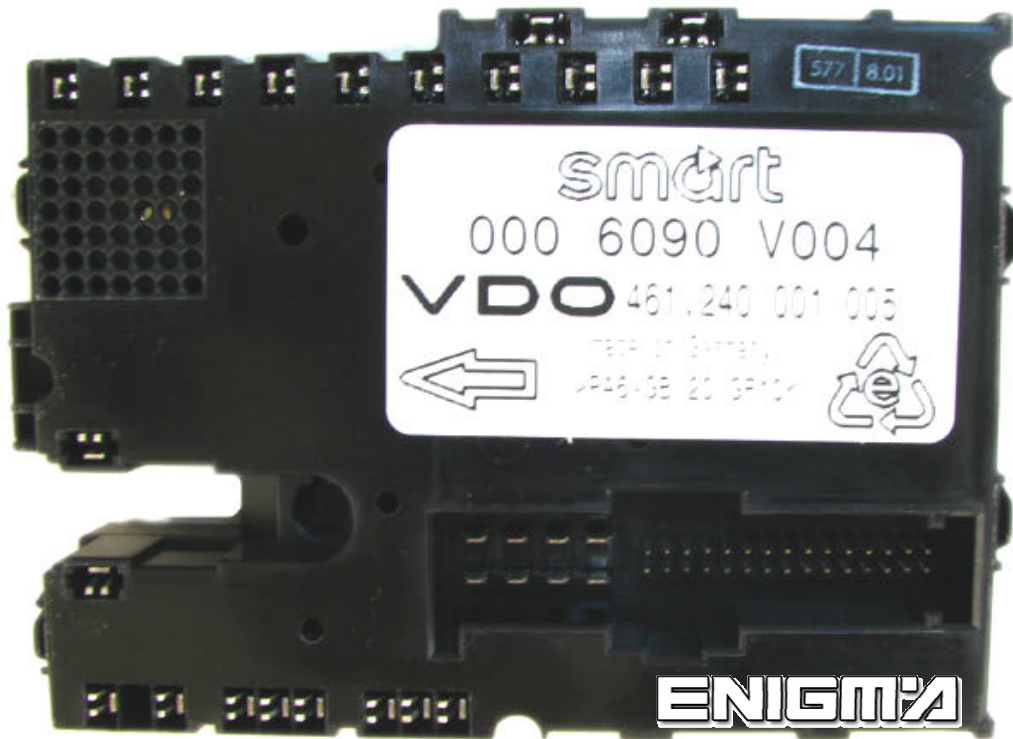


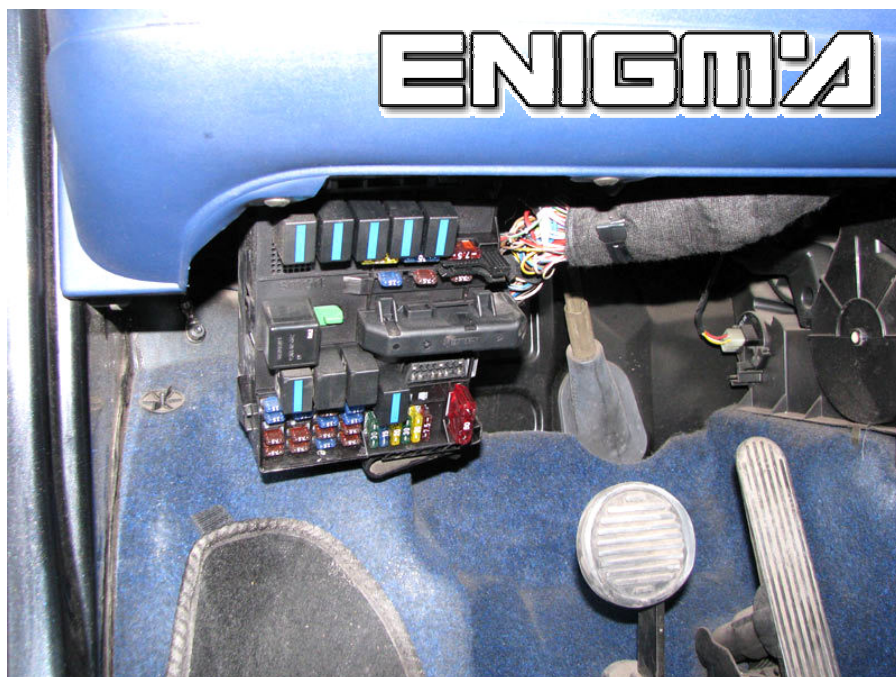
SMART FORTWO BSI

SMART FORTWO CARS HAVE SECOND MEMORY INTO A BSI, ON THE NEXT PHOTO WE CAN SEE OUTSIDE FROM IT:



IT IS VERY SPECIAL HOW TO REMOVE IT FROM CAR. WE TRY TO MAKE IT EASIER TO YOU WITH SOME PHOTOS AND EXPLANATIONS:

1. FIRST WE MUST FIND BSI, IT IS UNDER SOME PLASTICS



2. DISCONNECT PLUGS AN SOME RELAYS FROM BOX

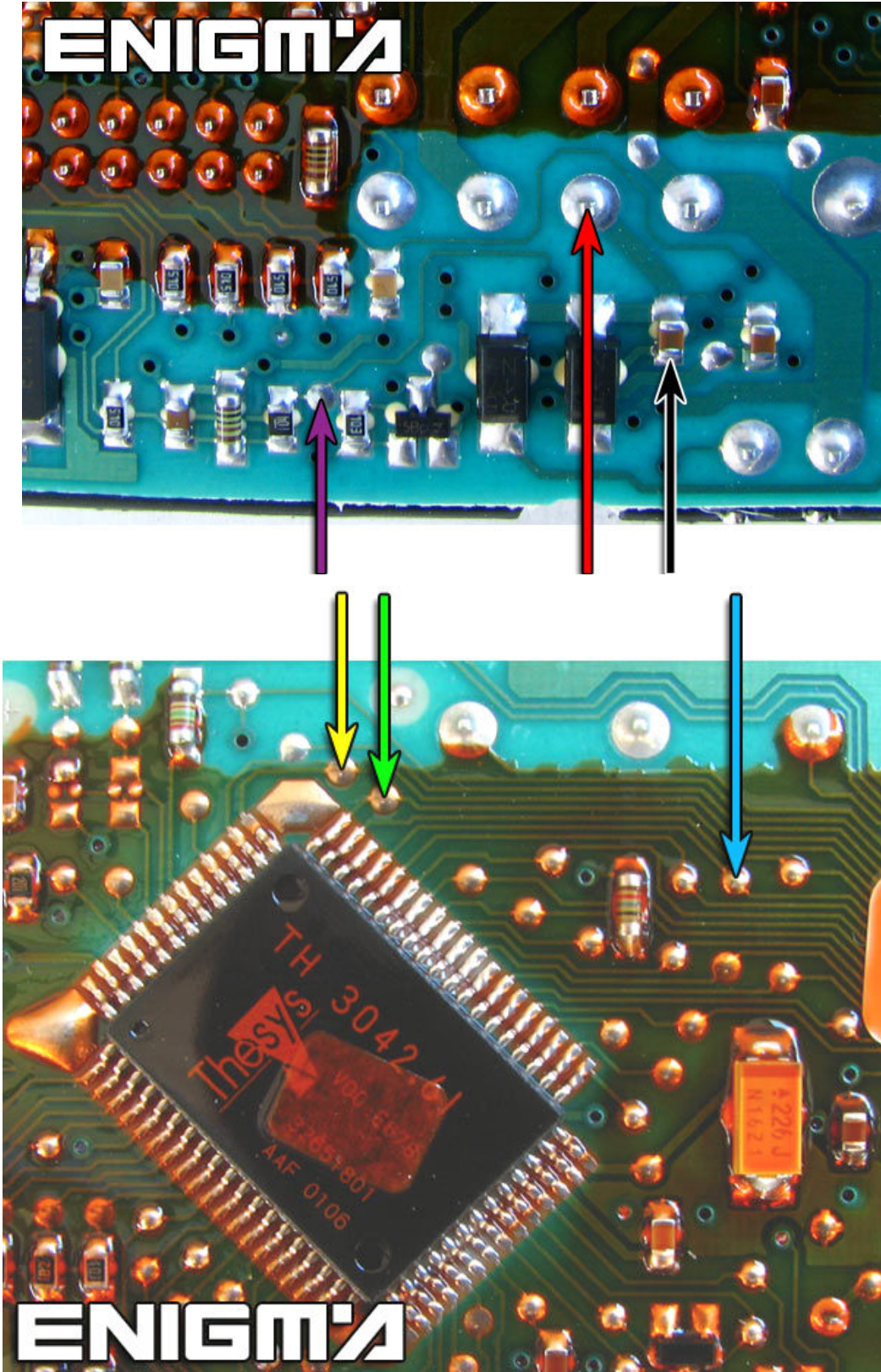


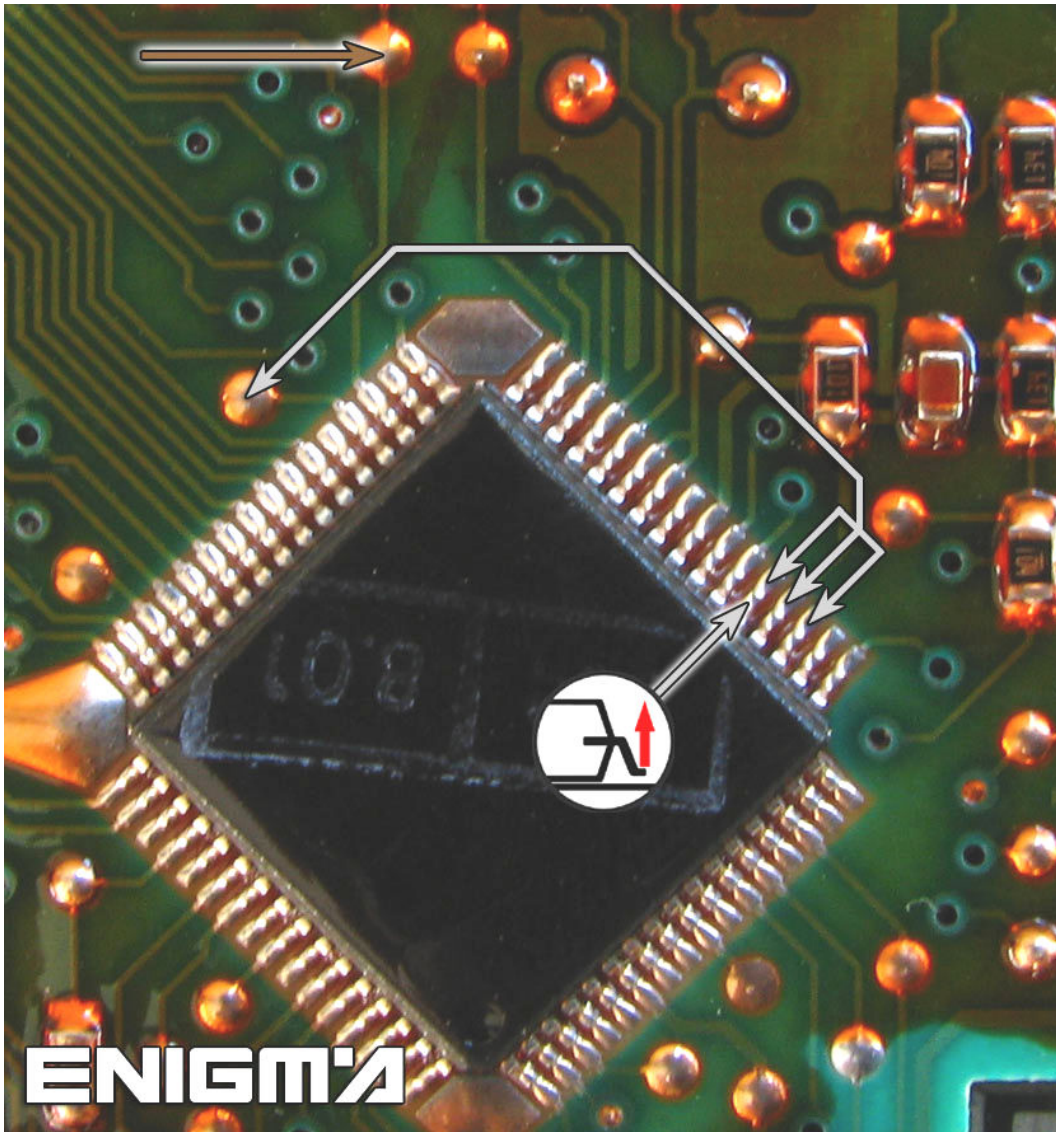
3. PULL BSI OUT, WE ONLY NEED IT TO BE PROGRAMMED



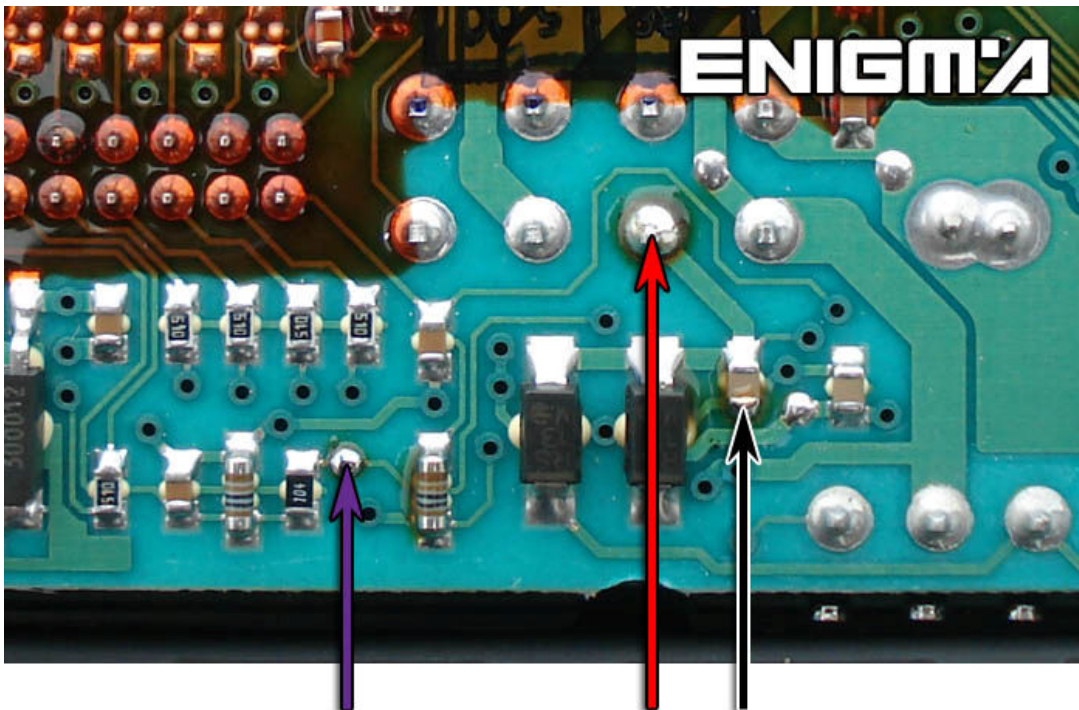
NOW WE HAVE BSI ON OUR HANDS, WE MUST OPEN IT BY THE EASIEST SIDE AND CHECK, BECAUSE WE CAN FIND 2 DIFFERENT VERSIONS. PROGRAM IS SAME, BUT CONNECTIONS MUST BE DONE DEPENDING NEXT INSTRUCTIONS:

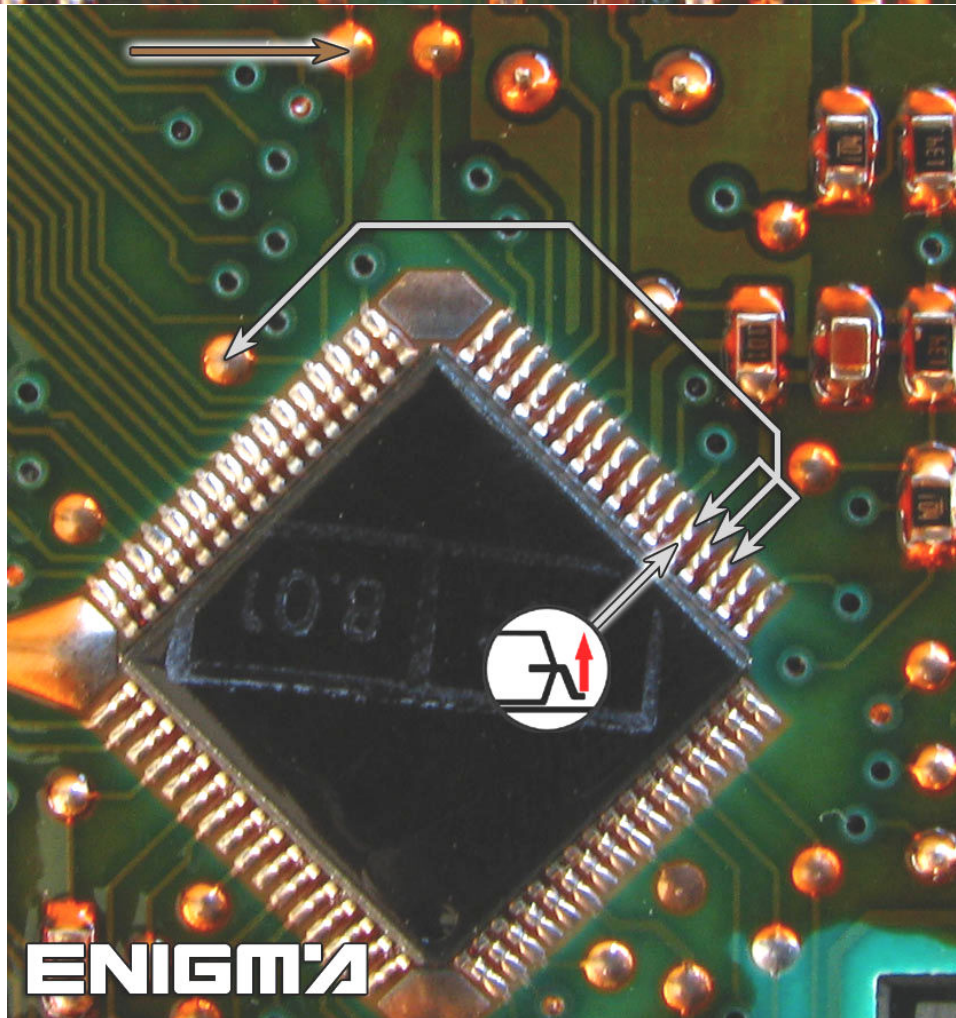
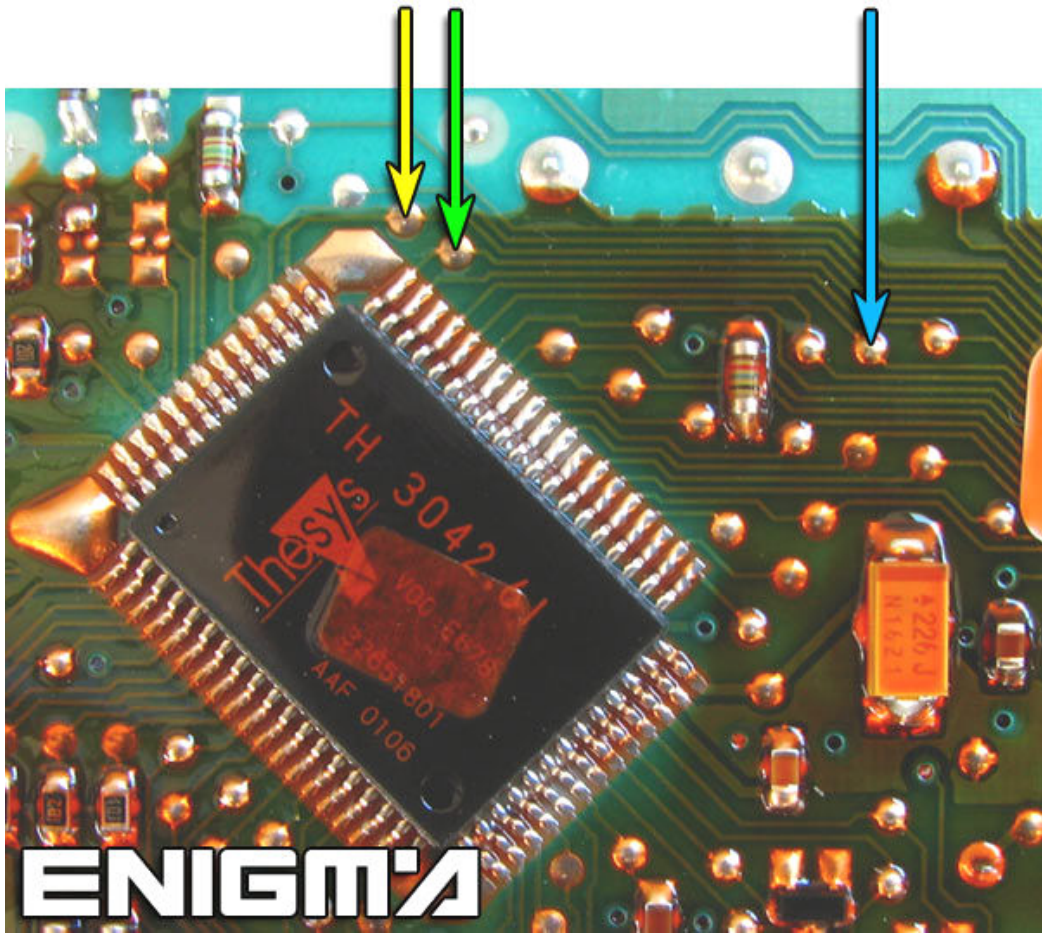
VERSION 1: USE C11 CABLE:





VERSION 2: USE C11 CABLE:





VERSION 3: USE C11 CABLE:

