

VOLVO V70 FROM 2007

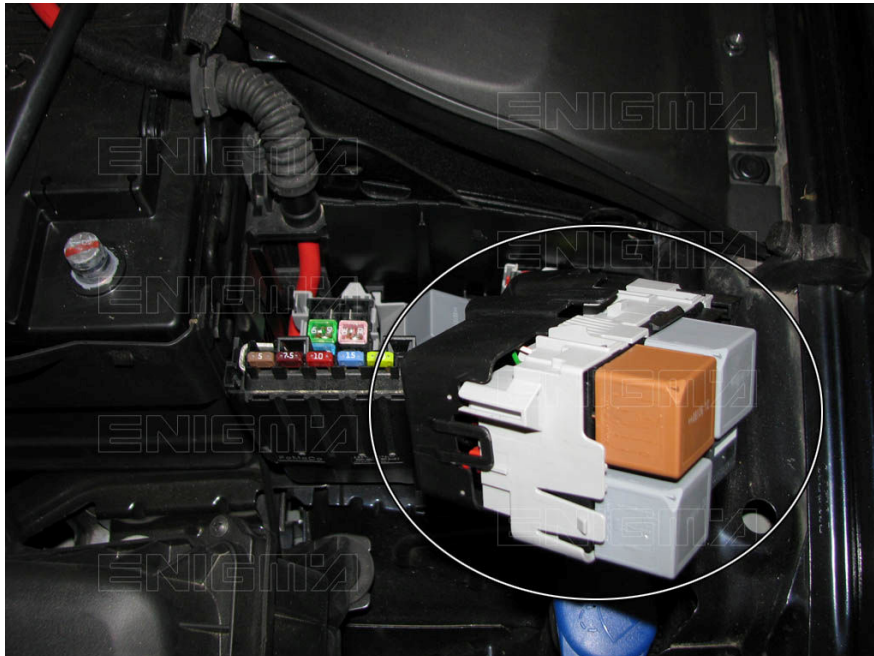
THESE CARS HAVE A VERY SPECIAL PROCEDURE, PLEASE FOLLOW THESE INSTRUCTIONS; DON'T TRY TO TAKE SHORT CUTS!

- **PREPARATION STEPS:**

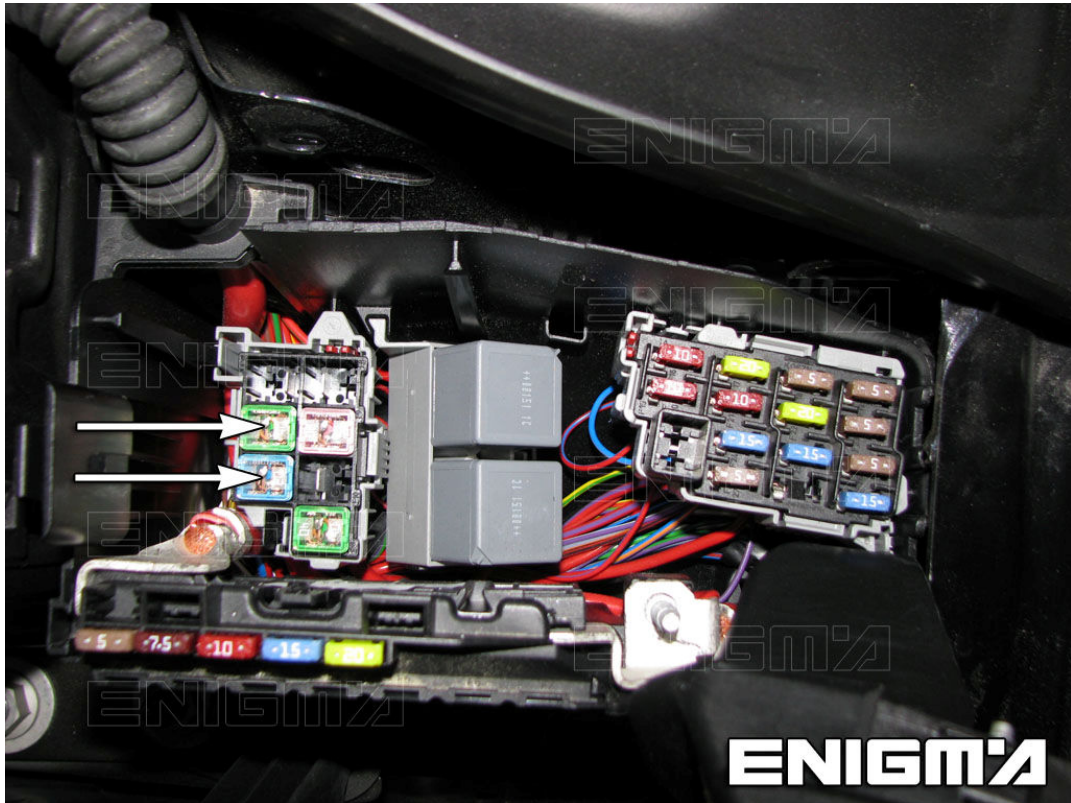
1. **WRITE OLD MILEAGE ON A PAPER AND REMOVE KEY FROM IGNITION.**
2. **OPEN BOTH BONNET AND BOOT/TRUNK.**
3. **DISCONNECT BATTERY NEGATIVE (-) TERMINAL.**



4. **UNSCREW THE BOLT DEPICTED BELOW, THIS MAY VARY IN SOME CARS IE THE RED CABLE MAY BE HOOKED ONTO BOLT, IN WHICH CASE BOLT THE RED CABLE DOWN. EXTRACT THE UPPER SECTION OF THE FUSE BOX.**



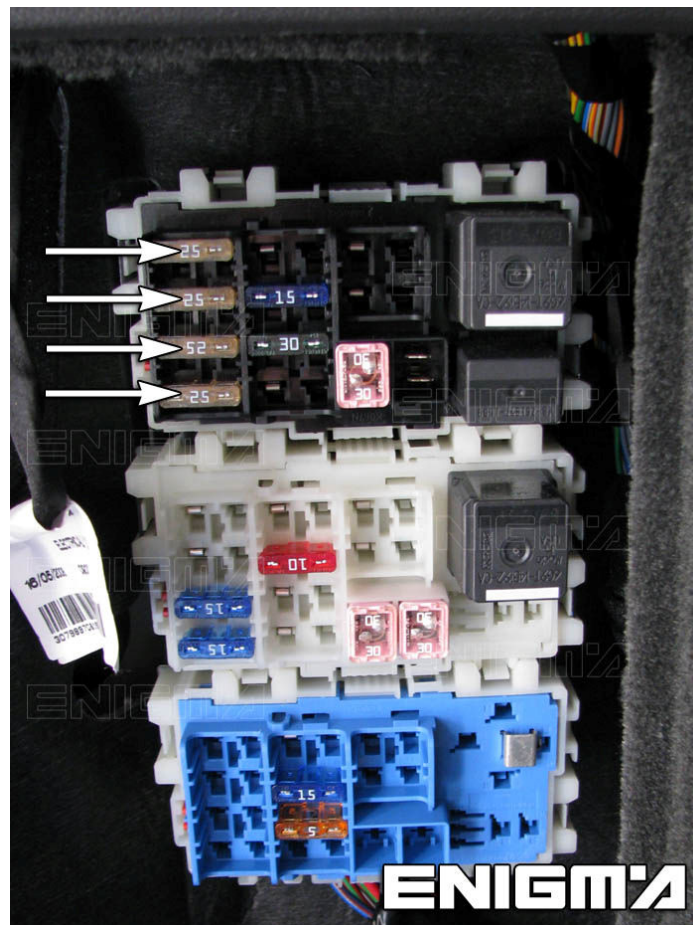
5. EXTRACT THE THREE FUSES AS SHOWN IN PICTURE, FUSE COLOURS MAY VARY:



6. IN THE BOOT/TRUNK ON LEFT HAND SIDE OF THE CAR, REMOVE A COVER TO REVEAL 3 OR 4 FUSE BOXES:

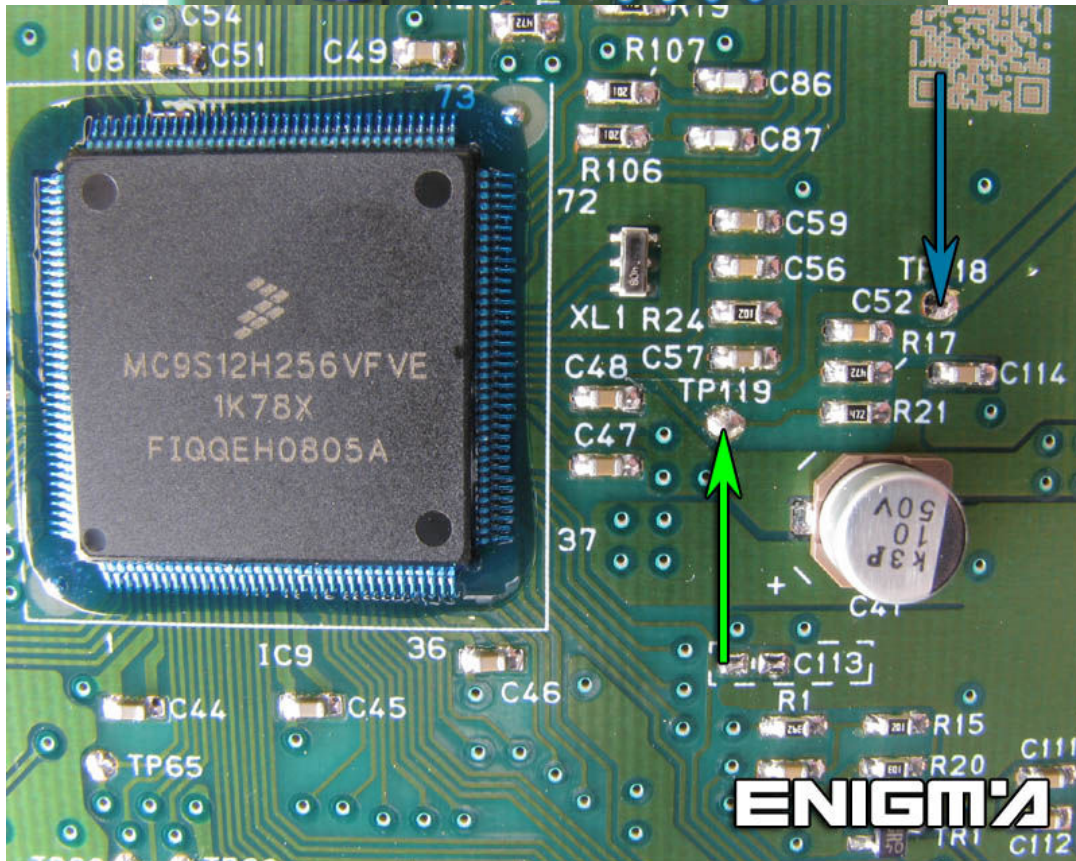
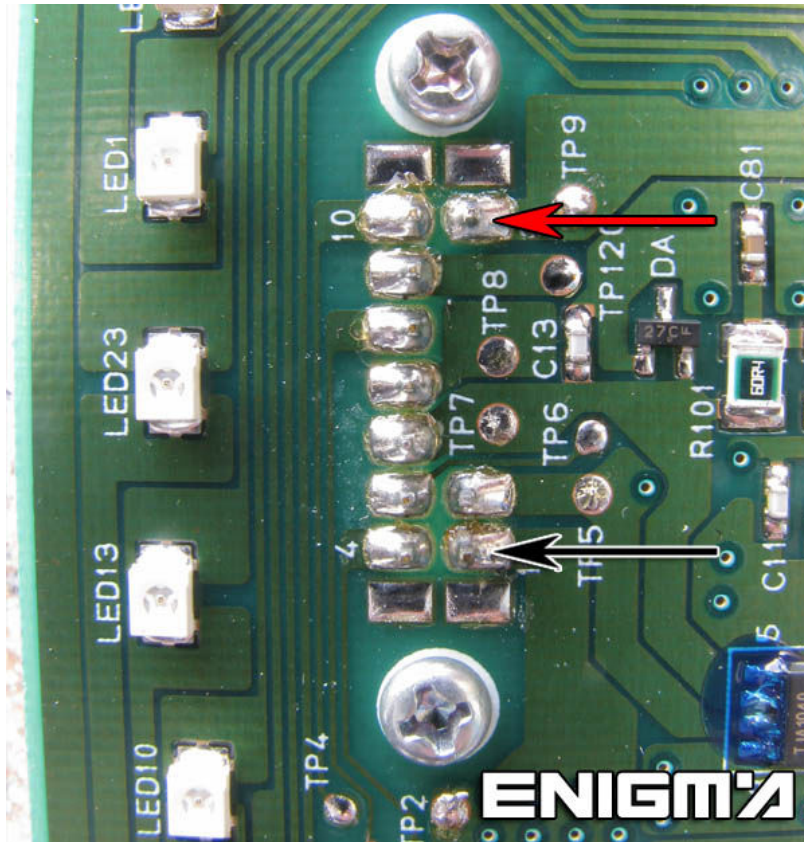


7. REMOVE COVER FROM THE BLACK FUSE BOX, AND EXTRACT THE 4 FUSES AS SHOWN IN PICTURE. THE FUSE BOX LAYOUT IN S80 IS HORIZONTAL AND IN THE V70 THE FUSE BOXES ARE STACKED VERTICALLY, ITS EASY TO SEE WHICH 4 FUSES NEED TO BE REMOVED.



- **DASHBOARD;**

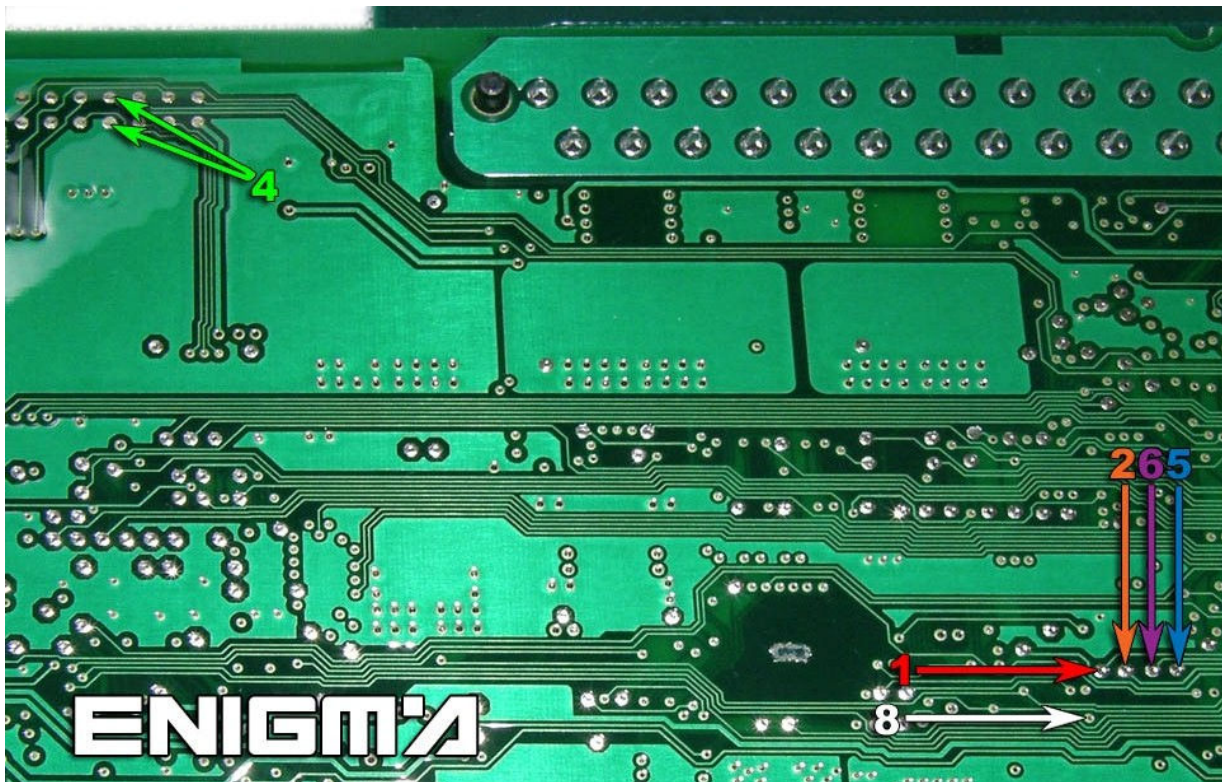
Use C12 cable, REMOVE DASH FROM CAR AND OPEN BACK COVER. LOCATE POINTS IN THE MAIN BOARD LIKE IN PHOTO BELOW AND SOLDER CABLE LEADS AS IT SHOWS TO US:



- VECAM-BCM:



1. REMOVE GLOVES STORAGE.
2. DISCONNECT WHITE BOX (CEM) AND OPEN IT.
3. USE CABLE C7, AFTER LOCATING POINTS ON THE BOTTON MAIN BOARD, SOLDER CABLE LEADS CONCORDANCE WITH ITS NUMBER-COLOUR:



!!! PROGRAM SAME VALUE ON DASH AND VECAM !!!

- FINALIZATION:

THE FOLLOWING INSTRUCTIONS ARE VERY IMPORTANT FOLLOW CAREFULLY OR YOU WILL HAVE TO REPEAT THE WHOLE PROCESS!

1. RECONNECT THE INSTRUMENT CLUSTER AND THE VECAM BCM INTO THE VEHICLE.
2. RECONNECT THE BATTERY TERMINAL.
3. INSERT THE IGNITION KEY AND PRESS THE "START" BUTTON, **WHILST FOOT BRAKE IS PRESSED (AUTO) OR CLUTCH IS PRESSED (MANUAL).**
4. CLUSTER WILL LIGHT UP AND MOST WARNING LAMPS WILL GO OUT AND THE ENGINE **WILL NOT** START (ABS/DSTC TROUBLE CODES WILL REMAIN ON LCD DISPLAY, DON'T WORRY ABOUT THIS).
5. **DO NOT POWER OFF OR ATTEMPT TO REMOVE KEYS!**
6. NOW RE-INSERT THE FOUR FUSES IN THE BOOT/TRUNK FIRST AND THEN THREE FUSES IN THE BONNET/HOOD.
7. REPLACE THE UPPER PART OF THE FUSE BOX AND BOLT IT DOWN.
8. ENSURE BONNET/BOOT AND ALL DOORS ARE CLOSED WHEN YOU ARE IN THE CAR.
9. PRESS THE "START" BUTTON WITH BRAKE OR CLUTCH PRESSED DEPENDANT ON THE GEARBOX TYPE, NOW THE ENGINE WILL START.
10. **DO NOT** POWER OFF THE ENGINE AND DRIVE FOR AT LEAST 2KM (TROUBLE CODES WILL STILL BE VISIBLE ON LCD SCREEN WHILST YOU ARE DRIVING, DRIVE CAREFULLY!)
11. AFTER 2KM OF DRIVING, POWER OFF, RE-INSERT KEY AND START THE CAR, DRIVE FOR AT LEAST 200M IN ORDER TO CLEAR THE TROUBLE CODES FROM THE LCD SCREEN, NOW THE LCD WILL JUST SHOW FOUR DASHES (CLOCK DISPLAY) ON RIGHT HAND SCREEN WHERE TROUBLE CODES WERE PREVIOUSLY.
12. CLEAR ANY UNSEEN CODES WITH A DIAGNOSTIC TOOL AND **JOB DONE!**