

VW GOLF V MAGNETI MARELLI 95320**DASHBOARD PHOTO:****REQUIRED CABLE(s):
C46 + C4****FOLLOW THIS INSTRUCTION STEP BY STEP:**

1. Remove the dashboard and open it carefully to get to 95320 EEPROM memory.
2. Use the EEPROM EDITOR to save memory backup data.
3. Take C46 cable and discard the plastic connector.
4. Make **BRIDGE** like shown on PHOTO2.
5. Connect C46 cables like shown on PHOTO1 and connect it to machine.
6. Connect 95320 EEPROM with C4 cable but **DON'T CONNECT** to machine yet.
7. Look at PHOTO3 to find correct position of PIN1.
8. Press the READ KM button and check if the value shown on the screen is correct.
9. Now you can use the CHANGE KM function.

! Info will appear to disconnect the C46 cable and connect C4 cable with EEPROM !

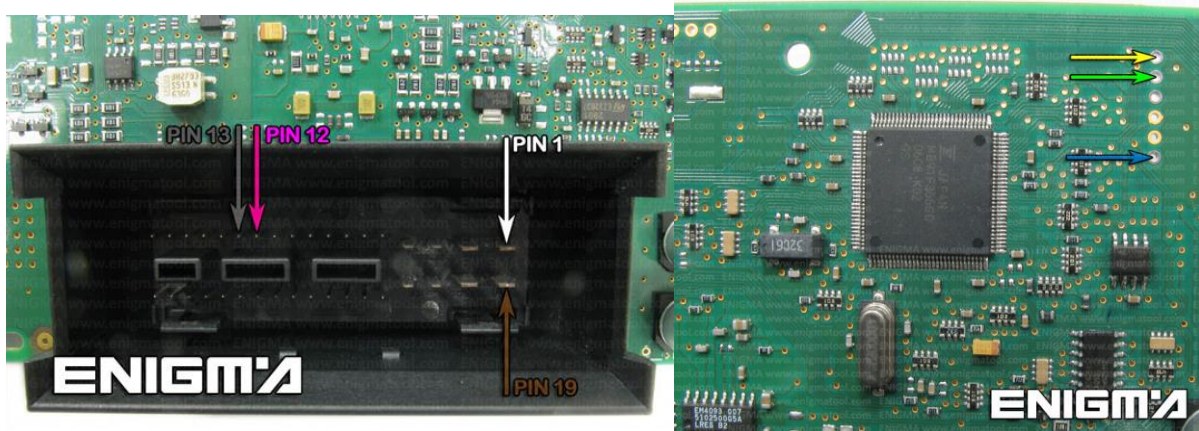


PHOTO 1: Solder C46 cables according to the colors like shown on the photo above.

FOR MORE INFORMATION

Call **0034 983 359 787** or visit www.enigmatool.com

DIAGCARELECTRONICS S.L. Ebanistería 1A, 47610 Zaratán, Spain

VW GOLF V MAGNETI MARELLI 95320



PHOTO 2: Make BRIDGE like shown on photo above.

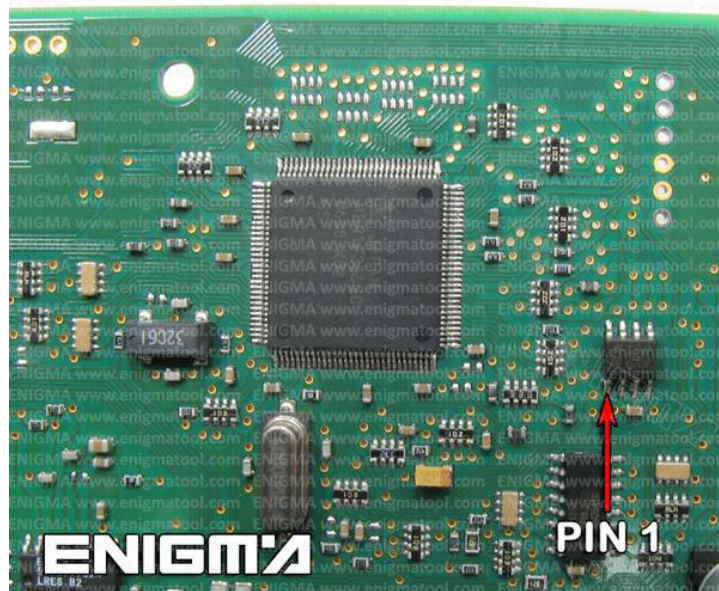


PHOTO 3: Connect cable C4 to the EEPROM memory according to the picture above.

LEGAL DISCLAIMER:

DIAGCAR ELECTRONICS S.L. does not take any legal responsibility of illegal use of any information stored in this document. Copying, distributing or taking any action in reliance with the content of this information is strictly prohibited.

FOR MORE INFORMATION

Call **0034 983 359 787** or visit www.enigmatool.com

DIAGCARELECTRONICS S.L. Ebanistería 1A, 47610 Zaratán, Spain