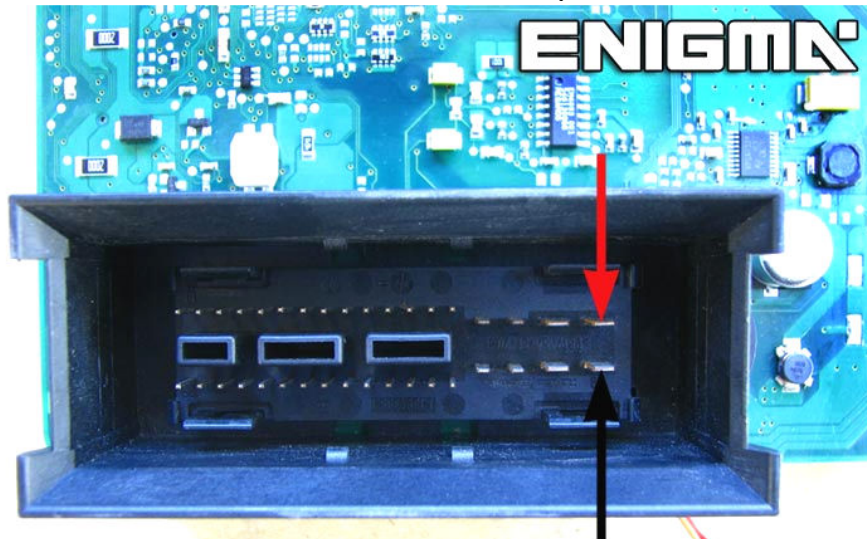
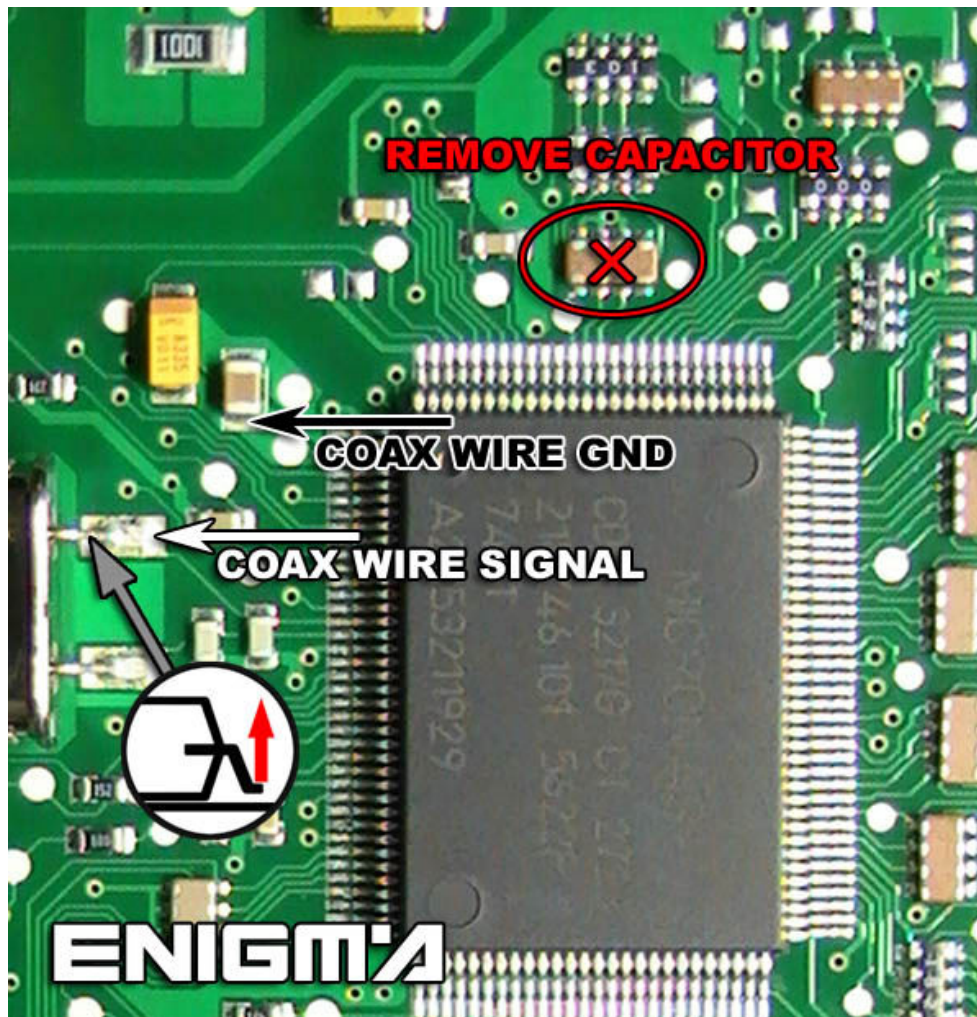


VW TIGUAN

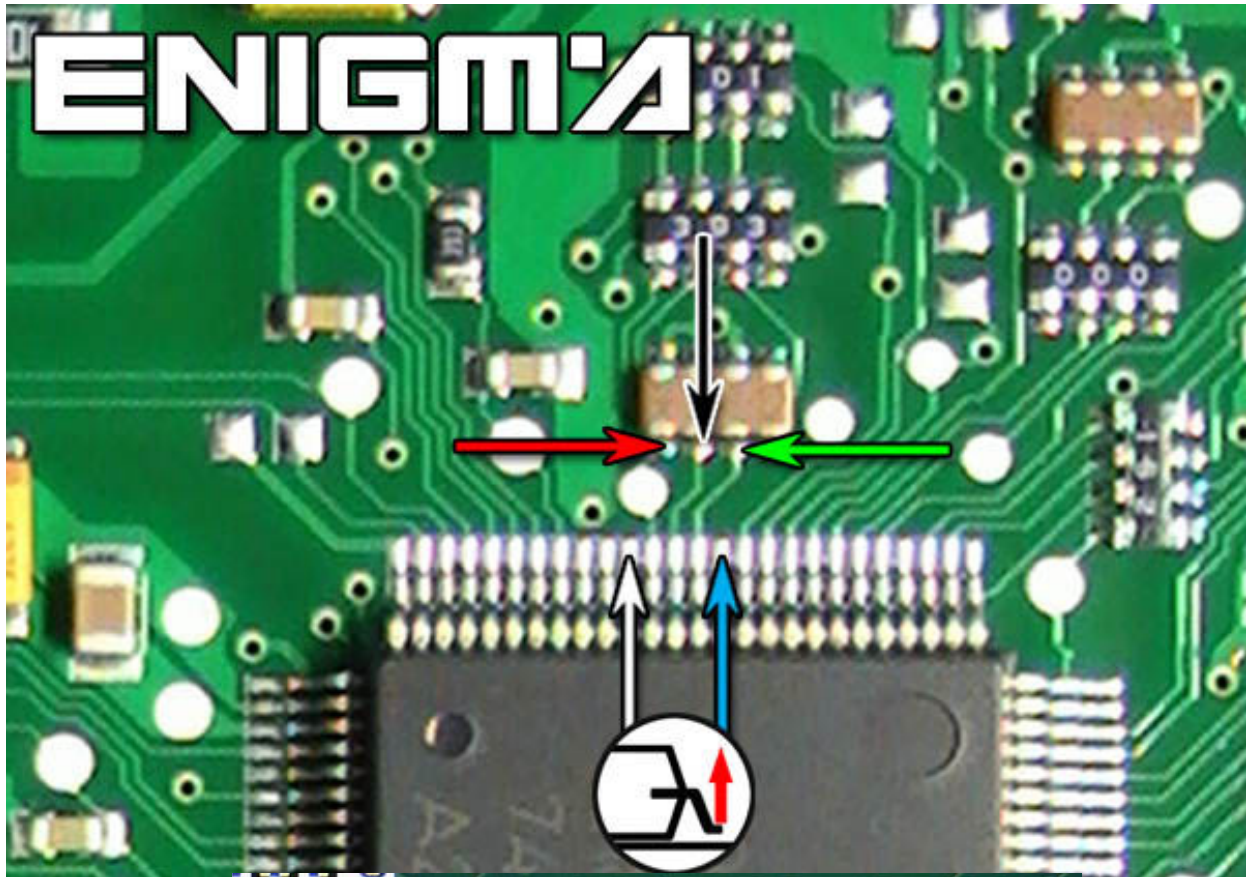
USE CABLE **C44 + A5 ADAPTER**, REMOVE DASH FROM CAR AND OPEN IT COMPLETELY. SEPARATE BOTH BOARDS FROM DASH, AND CONNECT POWER ON PLUG:



WE MUST REMOVE CAPACITOR AND LIFT UP QUARTZ PIN LIKE INTO PHOTO BELOW:



NOW LOCATE POINTS ON THE OTHER SIDE OF BOARD LIKE IN PHOTO BELOW AND SOLDER CABLE LEADS AS IT SHOWS TO US:



READ **KEY FILE** AND THEN CONNECT BACK TO CAR AND PROGRAM BY **OBD**.