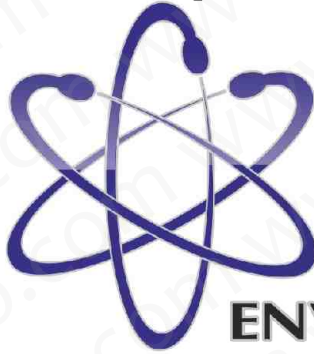




CarLabImmo



IMMO BYPASS

ENVIRONMENT SOFTWARE

ON-line

Instruction



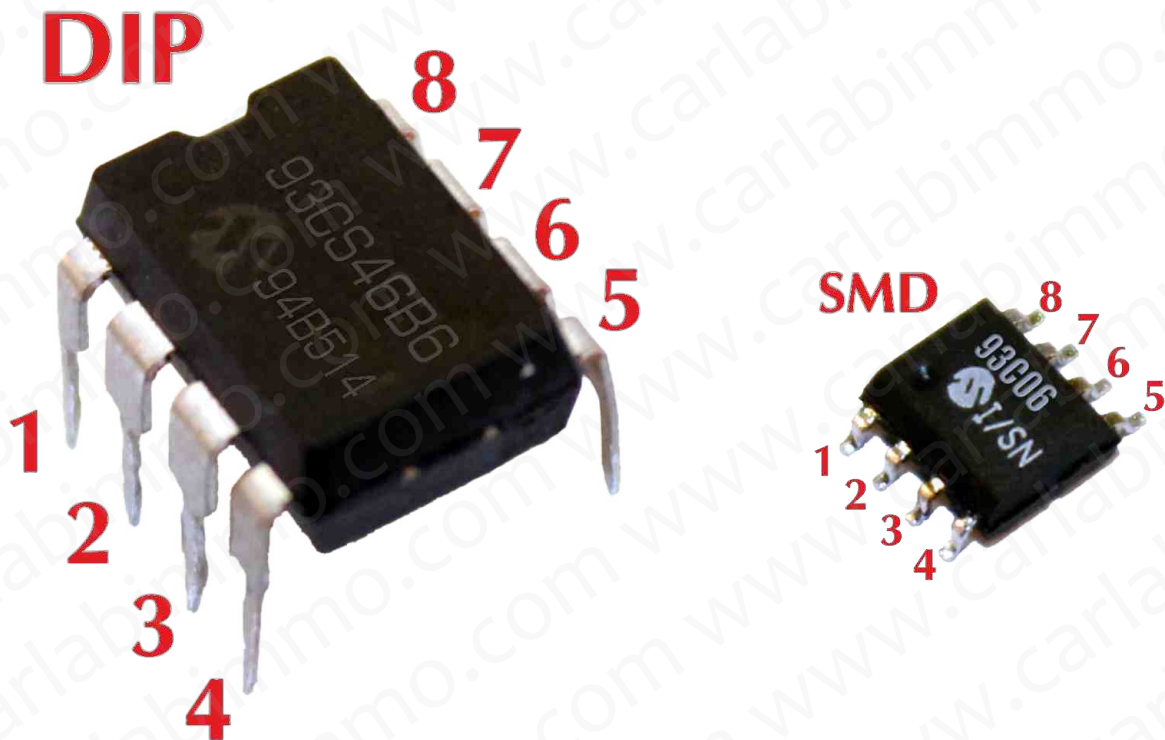
Table of contents:

Section 1. EEPROM MEMORIES.....	3
The types of memories.....	3
The methods of soldering out, reading and recording.....	5
Section 2. MOTOROLA Processors.....	7
HC05, HC705, HC11 PROCESSORS.....	7
X-Prog Programmer.....	8
The Device Programmer Desktop function.....	9
Section 3. EPROM and Flash.....	13
Section 4. Car security:.....	14
Car lock, ignition switch.....	14
Steering wheel lock.....	14
Car alarm.....	15
Non – serial immobilizer.....	15
GPS - Global Positioning System	16
Steering wheel lock called 'steering wheel lock'.....	16
Gear lock.....	17
Serial Immobilizer(factory).....	17
Section5. Installation Guide, actions and descriptions.....	20
5.1 The program installation.....	20
5.2 The registration and subscription.	22
5.3 First Start of Immo Bypass On-line.....	27
5.4 General information about the use of Immo Bypass On-line.....	28
Section 6. Setting the codes.....	34
Section 7. Comparing the files.....	37
Emulation.....	38
Section 8. Adjusting the parameters.....	40
Section 9. The methods of enumerating the checksums.....	41
Section 10. Immobilizer's emulators.....	43

Section 1. EEPROM MEMORIES

The types of memories

To read and save the eeprom memory use the WELLON programmer. Eeprom memory is identifying with the description. The dot means first leg, which is counted opposite clockwise. The Through-Hole cover or Smd legs on the outside.



1) Micro Wire – should be read and programmed as 16 bit (with A letter as 8 bit). Memories are convertible from bigger to smaller because of different time of access.

93c06	93c46	93c56	93c66	93c76	93c86
93cs06	93cs46	93cs56	93cs66	93cs76	93cs86
93s06	93s46	93s56	93s66	93s76	93s86
93lc06	93lc46	93lc56	93lc66	93lc76	93lc86

Memory legs	placed
1 2 3	To processor
5	Vss bulk
8	+5V Vdd

2) I2C – read and program as a 8 bit. The memories are convertible from bigger to smaller.

24c01	24c02	24c04	24c08	24c16	24c32
24cs01	24cs02	24cs04	24cs08	24cs16	24cs32
24lc01	24lc02	24lc04	24lc08	24lc16	24lc32

Memory legs	placed
1 2 3 4	Vss bulk
5 6	To processor
8	+5V Vdd

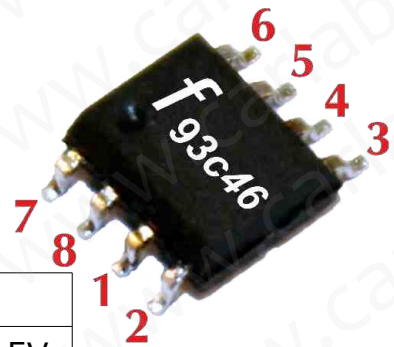
3) SPI

25040	25080	25160	25320	25640
95040	95080	95160	95320	95640

4) 5P08C3 - It is a eight – legged memory with SPI type which can be find in e. g. Mercedes Sprinter ECU.

5) 35080 – it is a eight – legged memory with SPI type with security bit, which can be find in e. g. BMW counter after 2000 year.

6) 93c46 **moved** by two legs with opposite clockwise. While reading as ordinary, can be damaged. If assumed the ordinary 93c46 on cables moved by two places with opposite clockwise.

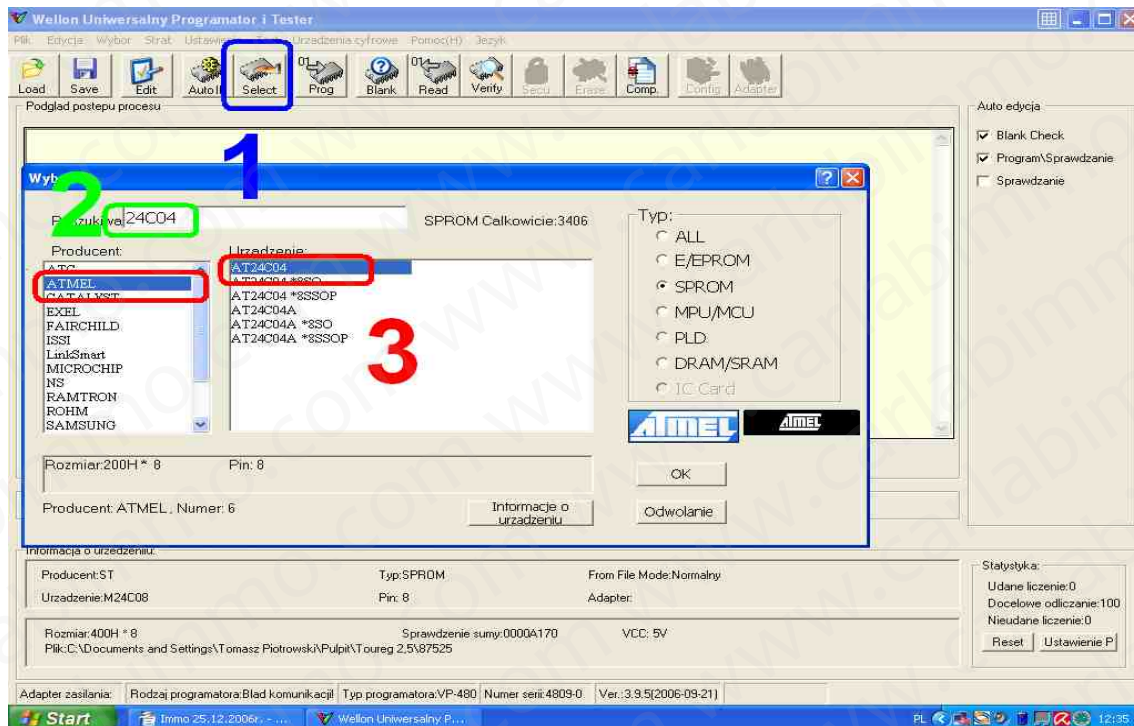


Memory designation	
c	Ordinary memory programmable 5V
cs and s	Memory with security bit
lc	The low-voltage memory

Some of the Micro Wire memories are recorded with inverted bytes. It can be seen while comparing the files. You need to use the 'swap' function in Buffer.

The methods of soldering out, reading and recording

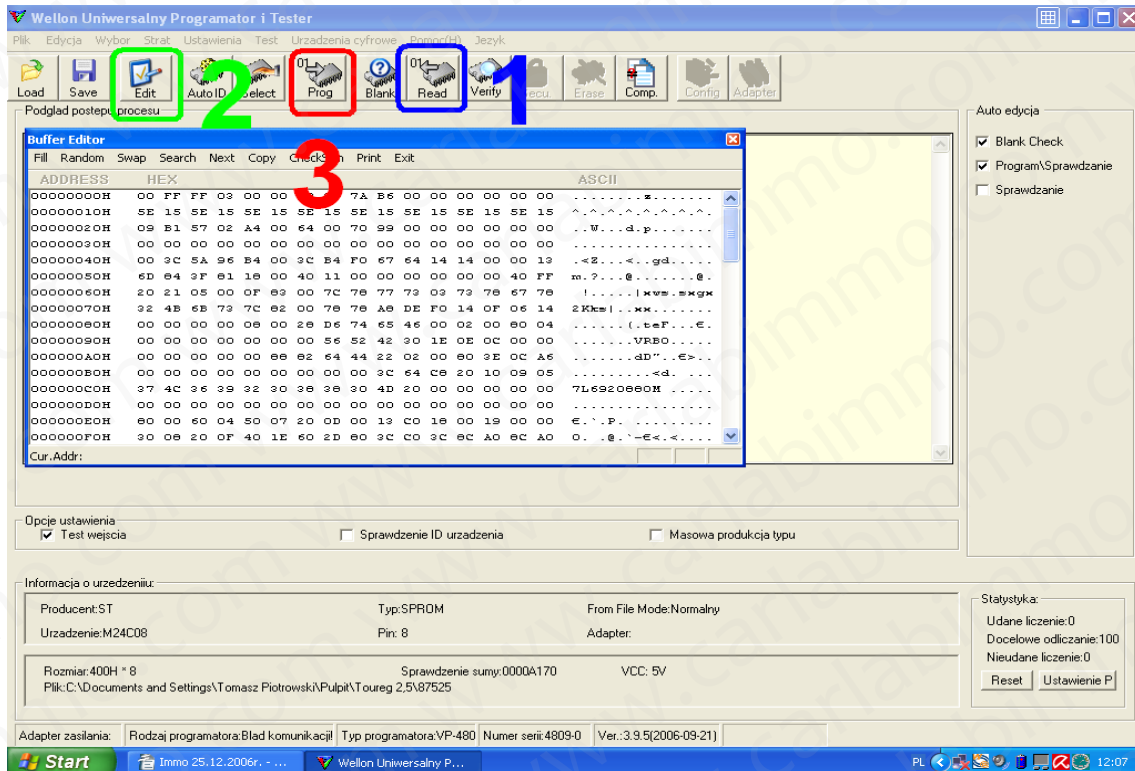
SMD memories should be soldered out (if it is covered with varnish use the nail polish remover before soldering) by spilling over the legs with tin, which should be heat up with the soldering tool to put out the memory. The rest of the tin should be cleaned with soldering tape and soldering gel. The rest of the impurity should be removed with PCC switch with cutted tuft.



Actions performed in Wellon programmer

- (1) choose **Select**
- (2) enter the name of memory
- (3) choose the manufacturer

ATTENTION! IF YOU DON'T KNOW WHAT TO FILL, WRITE ATMEL



Actions performed in Wellon programmer

(1) choose **Read** (the content reading)

!!! After reading please make a copy urgently !!!

(2) choose **Edit** (the memory map's editing)

(3) choose **Prog** (the record of converted value)

	00	01	02	03	04	05	06	07	08	09	0A	0B	0C	0D	0E	0F
000	32	FF	32	D3	55	46	C7	C7	48	39	AA	BB	DC	CD	0E	32
010	45	F7	DA	CE	5F	6A	4C	4C	5B	33	21	7E	7F	2A	4D	DE
020	33	DE	FF	AA	5A	3D	33	21	DF	CC	3A	2D	38	9C	9D	B7

YOU CAN BUY THE PROGRAMMATOR ON OUR WEBSITE www.programatory.com

Section 2. MOTOROLA Processors

HC05, HC705, HC11 PROCESSORS



Processors should be soldered out with hot-aired blower – the temperature should be turned on 360(celcius degrees) with average speed not to blow out the SMD elements. Quartz next to the processor should be touched with a piece of metal to drain out the heat.

X-Prog Programmer

To read and record use X-Prog programmer



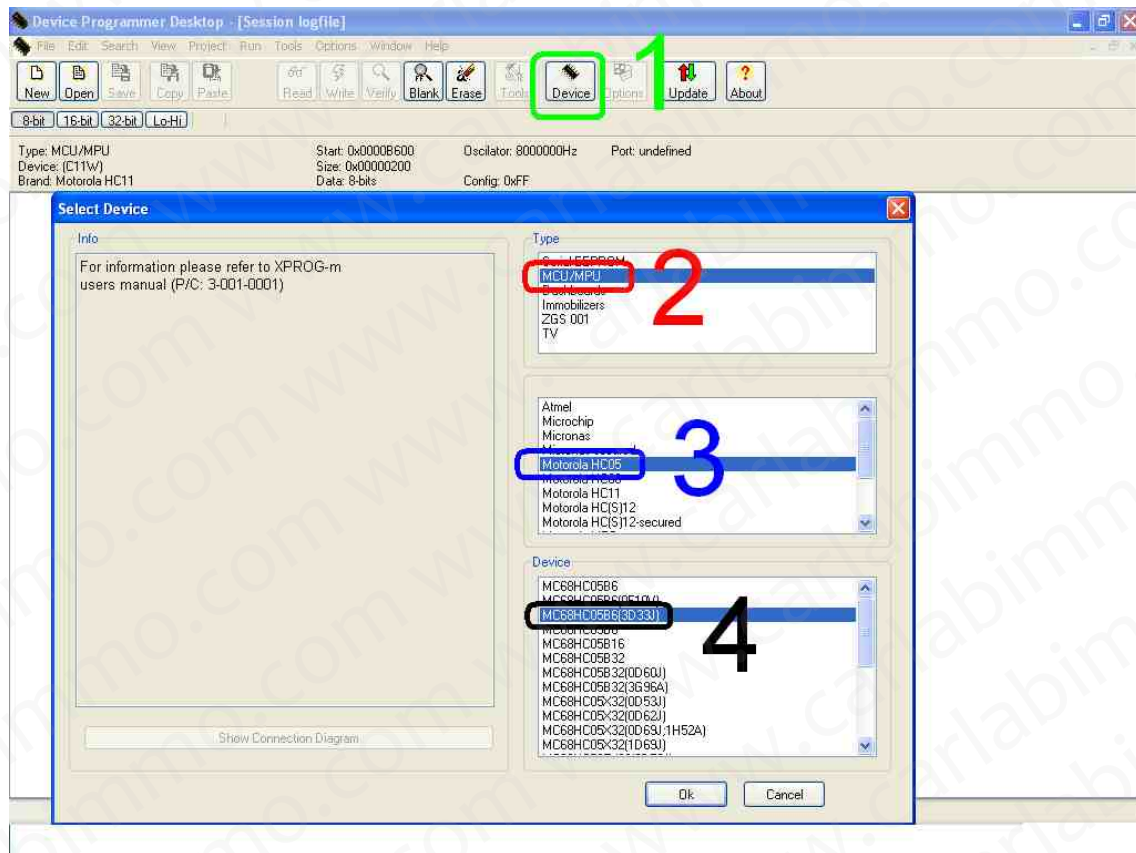
Choose the starter due to the embossed description HC11E9/EA9 according to processor's mask which is one before last line e. g.:

4E28B = E28B = MC68HC11E9

After soldering the programmers out or used of colored wires system plug in should be done according to the help in description in PDF file, if wire is marked as red in description (others are marked as black) you need to lift the processor's pin up immediately!!



The Device Programmer Desktop function

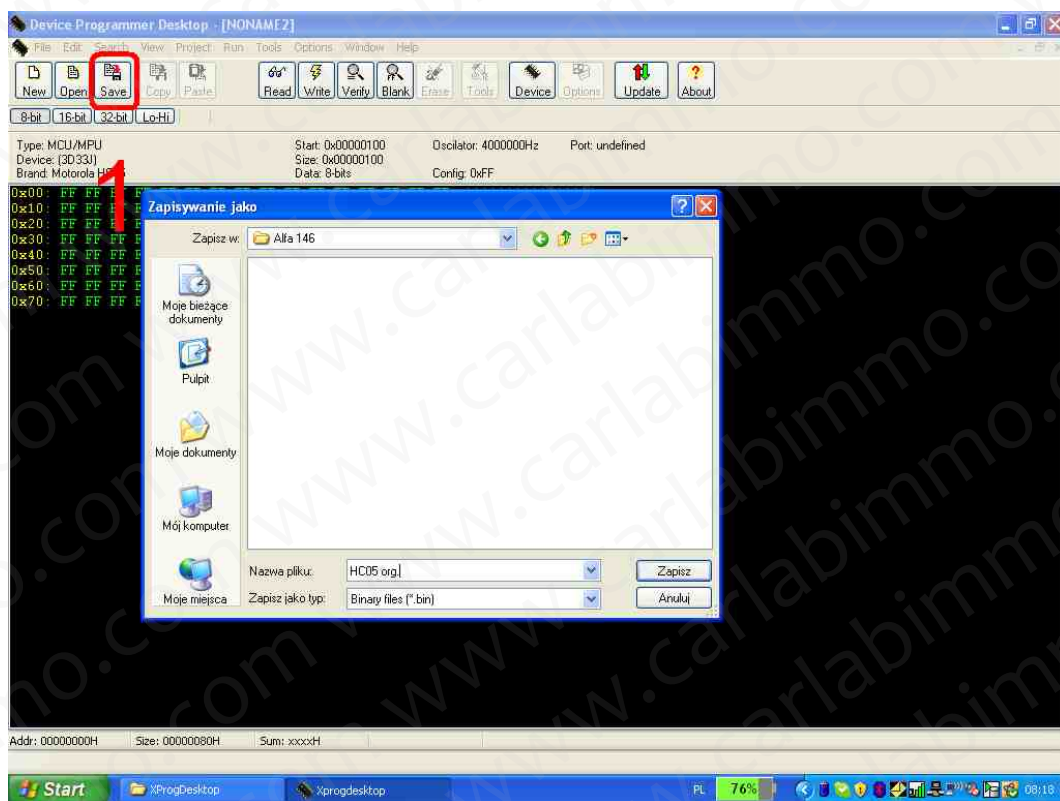


After setting the system, the item can be turned on.

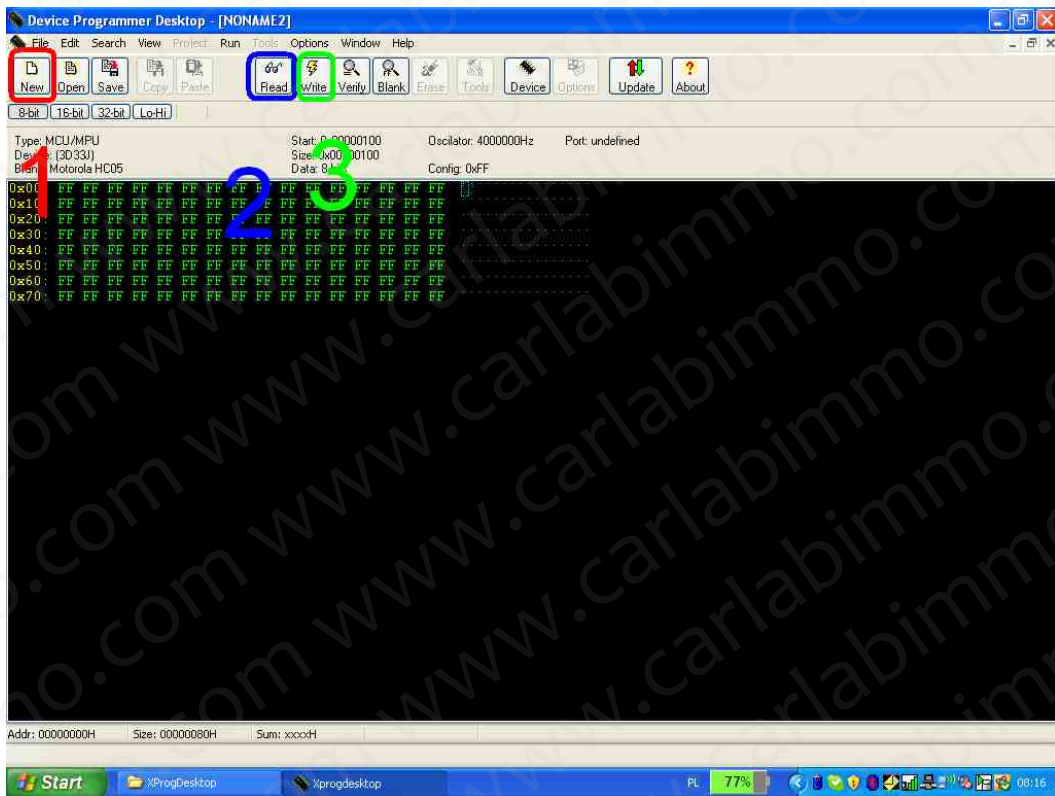
If everything is plugged correctly after the program opening:

- (1) choose **Device** from top panel
- (2) mark MCU/MPU
- (3) mark type
- (4) mark the brand of processor

Check if chosen quartz agrees with the same on the adapter.

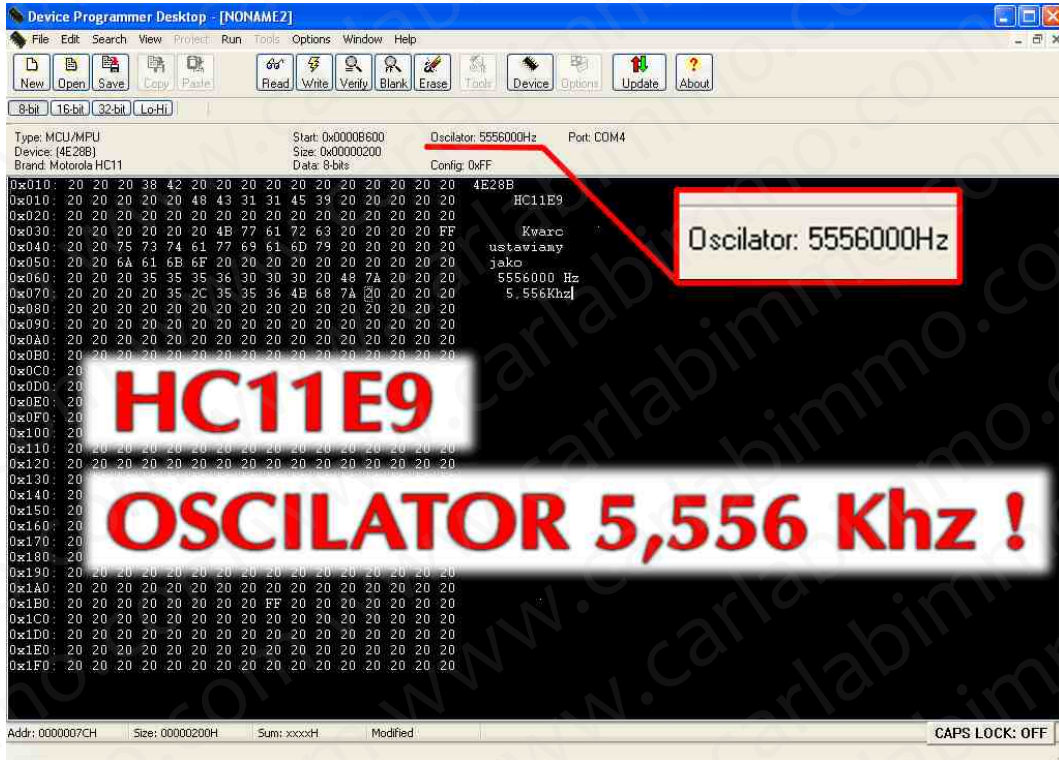


Before recording processed data you need to do the backup copy of the original record by clicking the disk!!! (1)

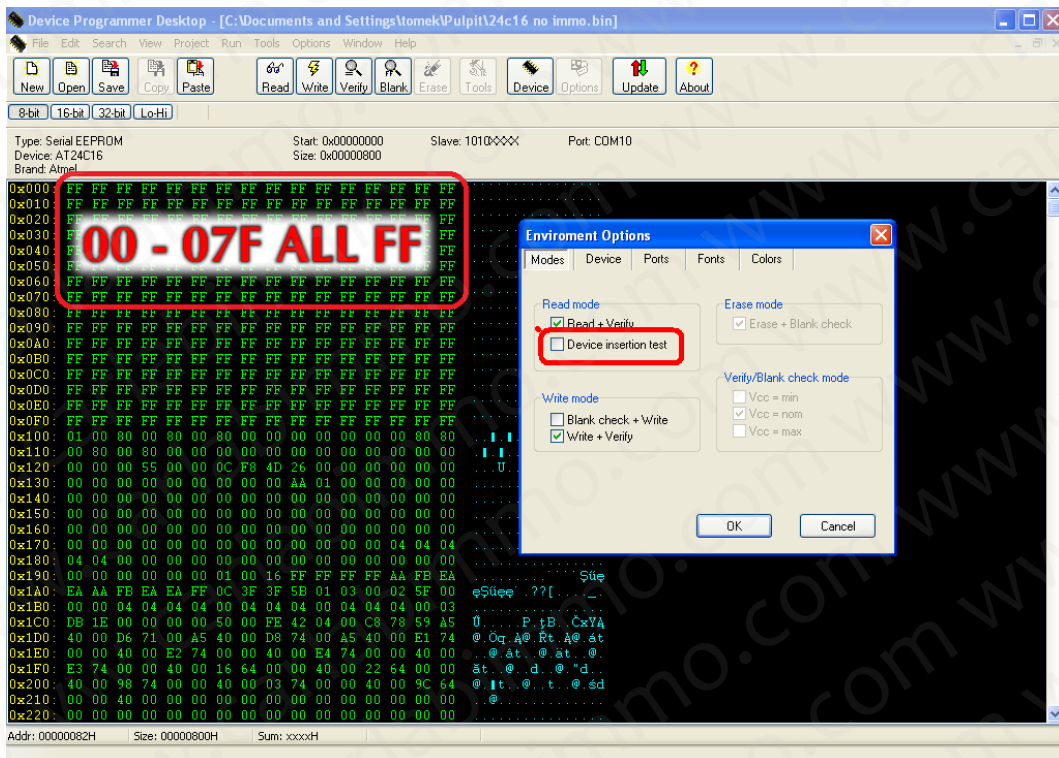


After choosing the processor:

- (1) click **New**
- (2) choose **Read**
- (3) Save processed data – **Write** button
(transformed value record)

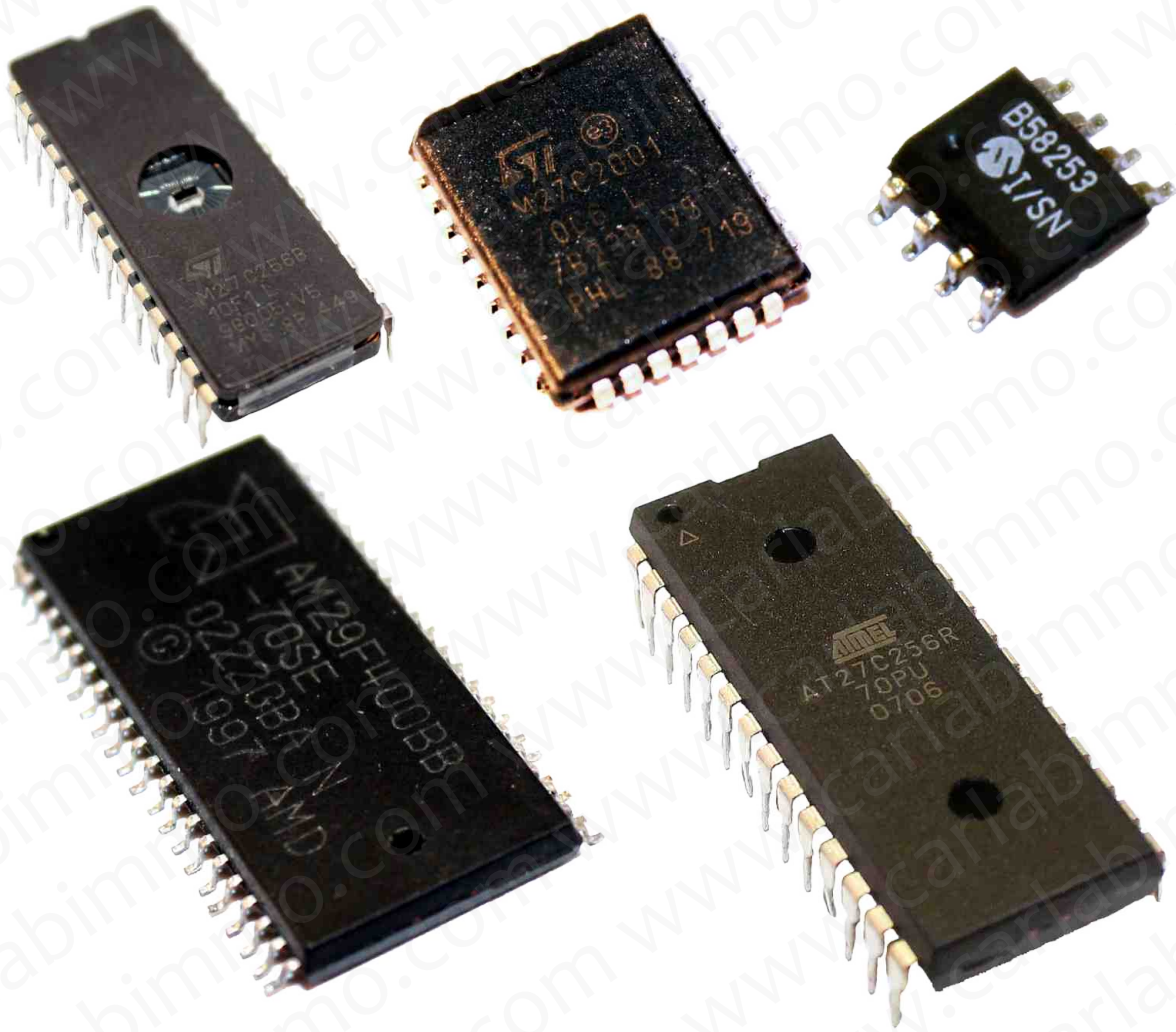


Setting the oscillator next to HC11.



To buy the programmer use address: www.tmt.it

Section 3. EPROM and Flash



Defining the type of memory can be done after choosing the numbers in the system or in 24 to 40 automatic ID in the program.

EPROM	Flash	
	In older drivers PLCC32, DIP28 are able to record one time	In the newer drivers plcc32, dip32, psop44. After reading and before recording delete the content It can be replaced:
29F200		29F400
28F200		29F200
28F512	29F010 27C010	

Section 4. Car security:

Car lock, ignition switch



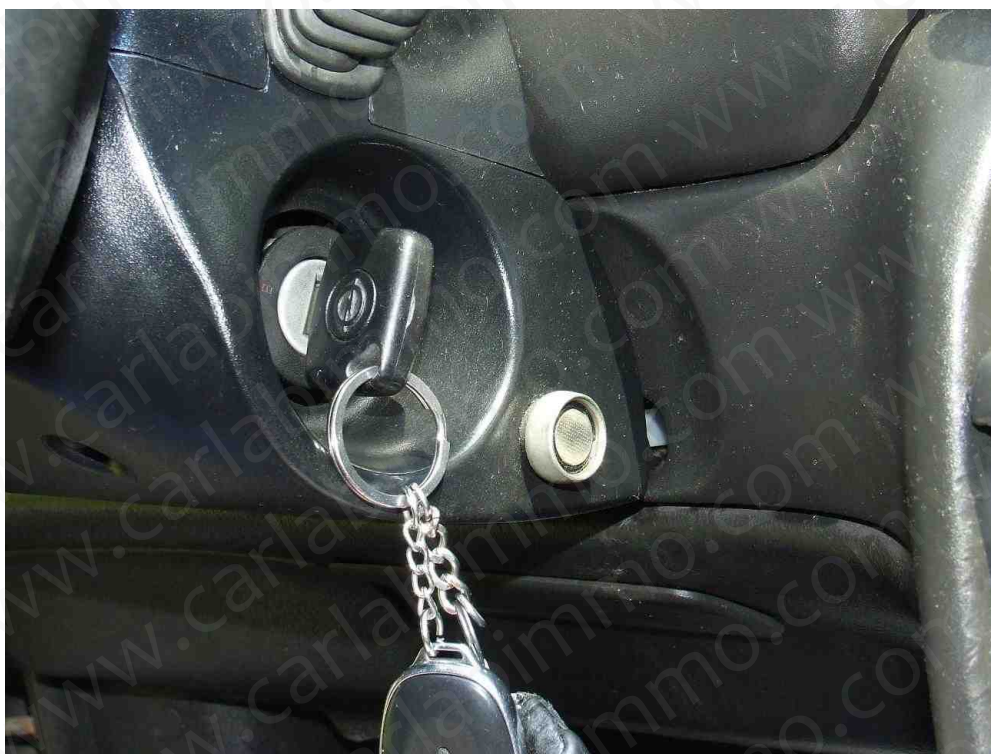
Steering wheel lock



Car alarm



Non - serial immobilizer



GPS - Global Positioning System



Steering wheel lock called 'steering wheel lock'



Gear lock

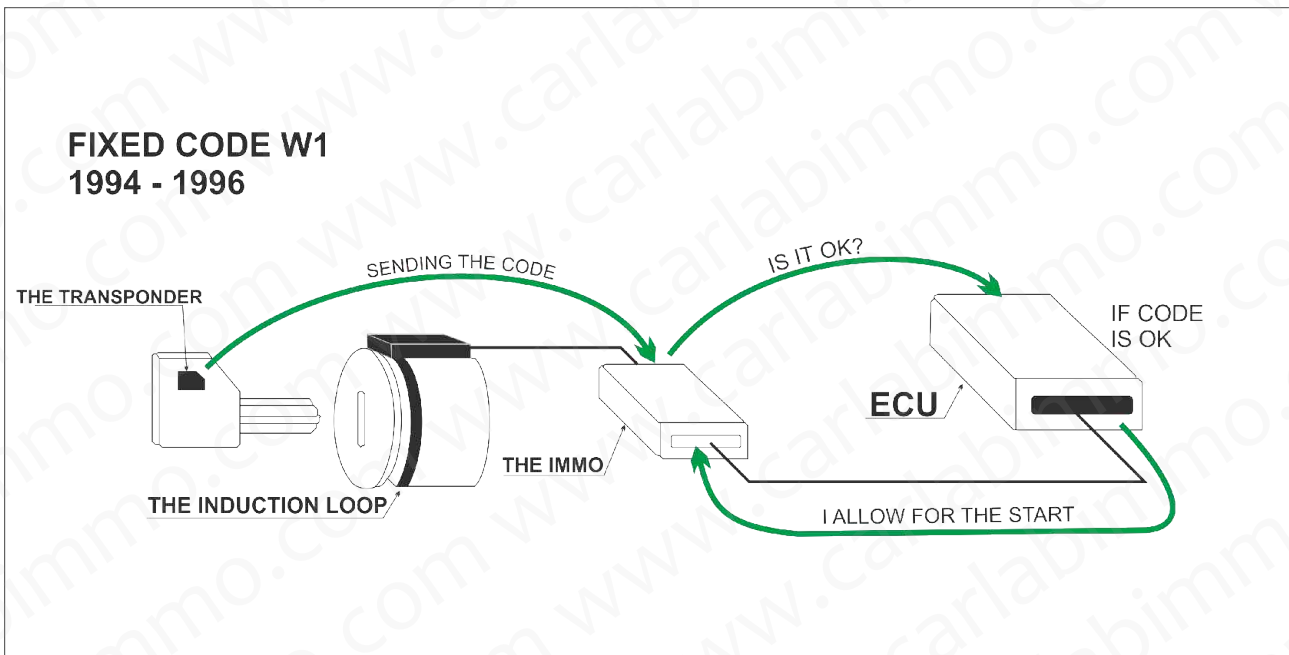


Serial Immobilizer(factory)

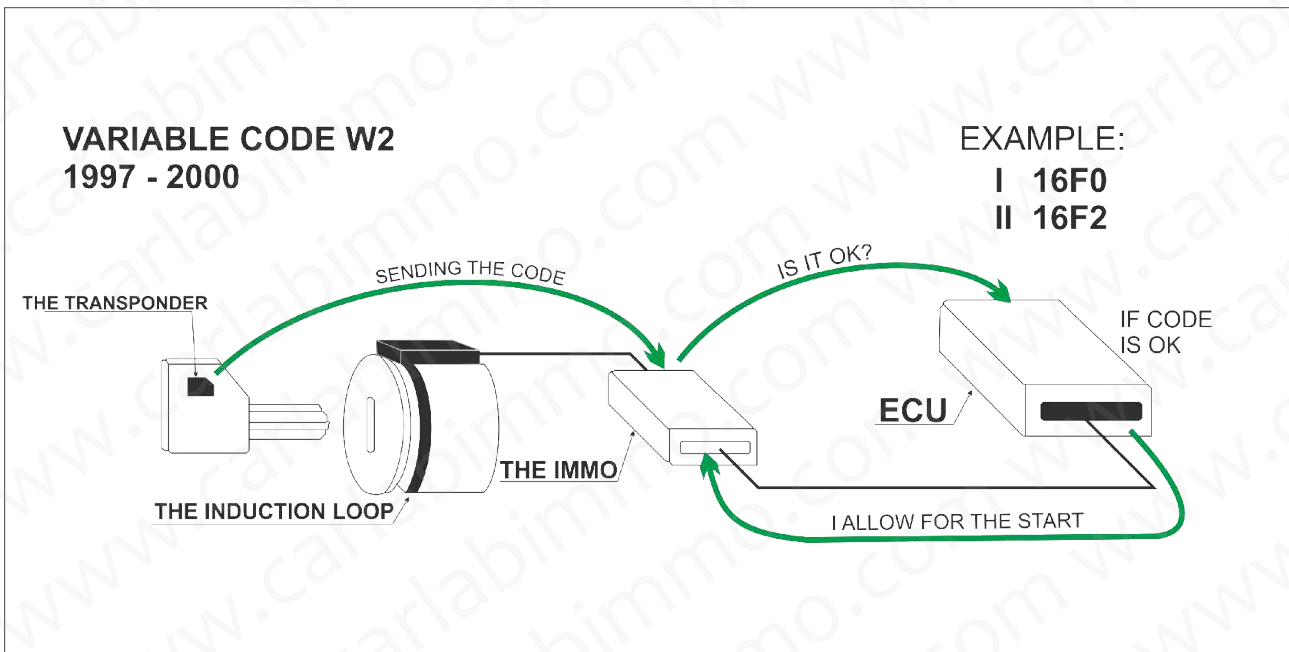


Serial immobilizers:

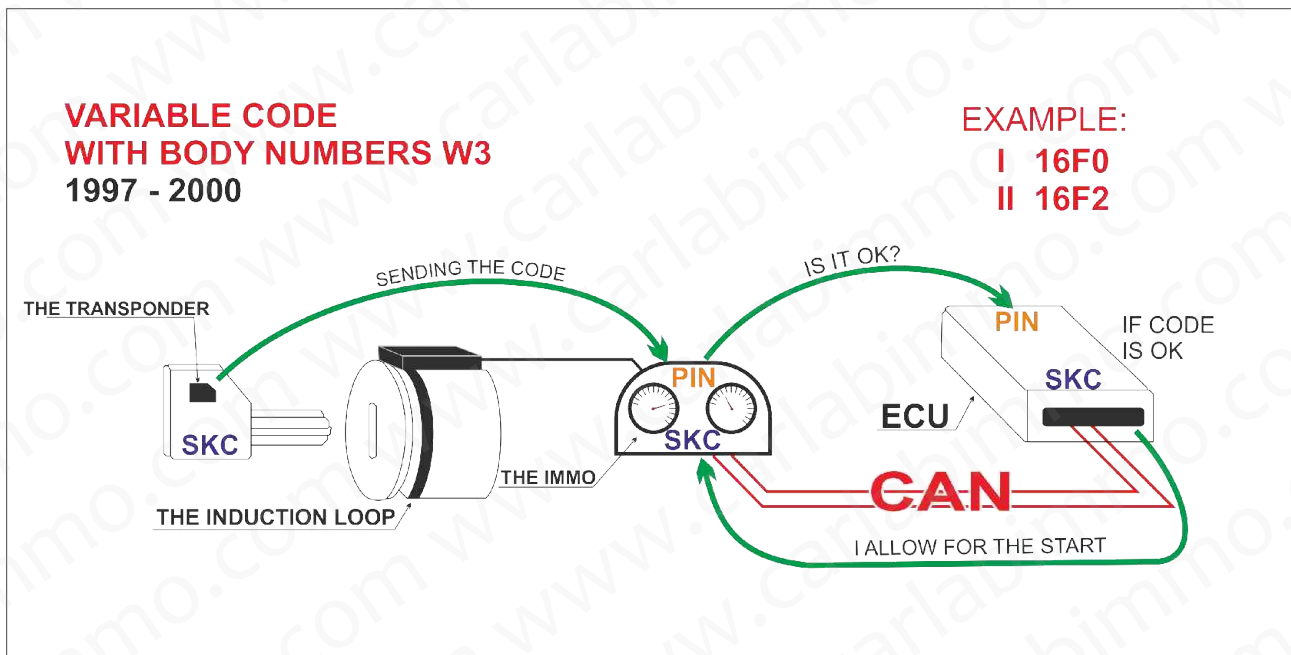
a) with fixed code w1



b) with variable code w2



c) with variable code with chassis numbers w3



Three components:

- ⇒ immobilizer's JS – the component of the set of indicators
- ⇒ engine's JS;
- ⇒ car keys.

The main feature of 3rd generation immobilizer is use of crypto-encoding system, which can't be decoded.

All three components of 3rd generation immobilizer are related with the same crypto code (components are mutually adjusted).

While adjusting the immobilizer's JS or engine's JS it is required to have two secret PIN codes.

The communication between immobilizer's JS and engine's JS take place through the CAN.

immobilizer's JS (it is placed in the set of indicators), there are codes: SKC – the number of code of specific crypto-algorithm of concrete car(unknown for the user) uploaded by the manufacturer.

BGW – the immobilizer's identification number—public,
(14 positions e. g. VWZ ... or SKZ ...)

PIN – secret number (is used to adjustment).

All codes, because of adjustment are uploaded to engine's JS (through the CAN) additionally the SKC code is uploaded to the car keys.

Car keys

It includes transponder with fixed code saved during the production (the code is not known for the service and it was used in immobilizer's from previous generations) and with SKC (crypto-algorithm number — **New!**) the code is unknown for the service and it is uploaded with immobilizer's JS during the adjustment.

The car keys after adjustment can't be used with different SKC (crypto – algorithm) - different than it was adjusted for the first time.

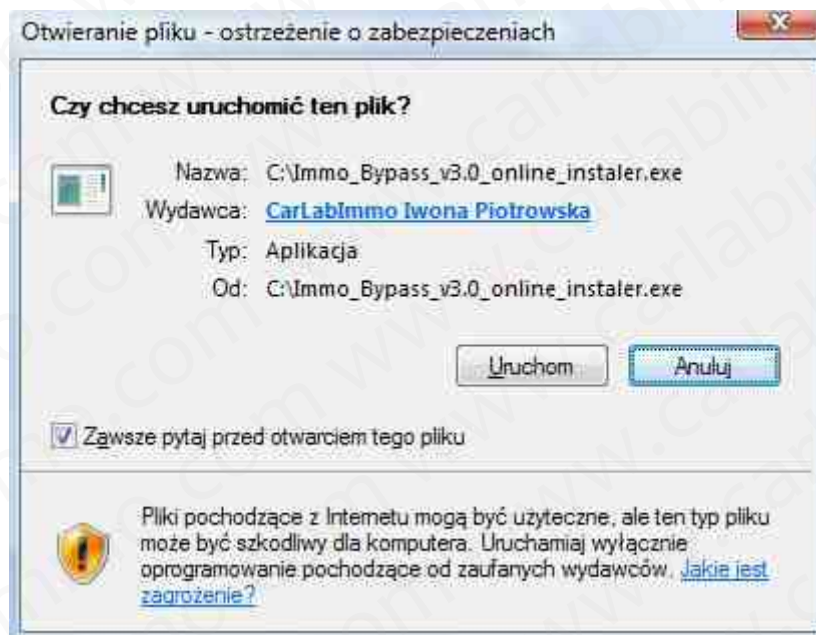
The crypto - algorithm (SKC) used to car keys can be uploaded just one time!

1. The car keys adjusted to the concrete car (with crypto-algorithm) can't be adjusted to another car (with crypto-algorithm).
2. After the replacement of the set of indicators there is no need to change the car keys because after the change of the set of indicators (crypto-algorithm) - SKC, which is typical for the concrete car, because of adjustment it is uploaded from engine's JS to immobilizer's JS it means that it stays still the same.
3. In case of one replacement engine's JS and immobilizer's JS the car keys have to be changed (normally it happens very rarely).

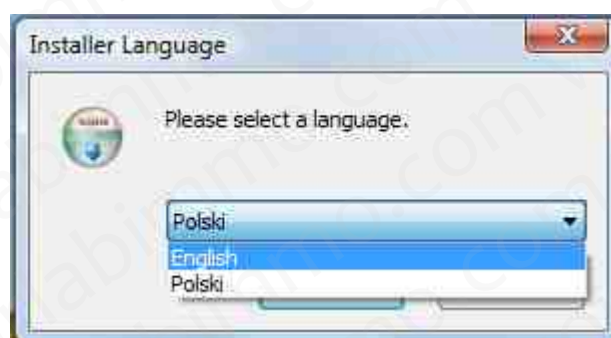
Section 5. Installation Guide, actions and descriptions

5.1 The program installation

In the operating systems the AdobeRdr80 or newer have to be installed.
The installation begins when we turn on the Installation Wizard.



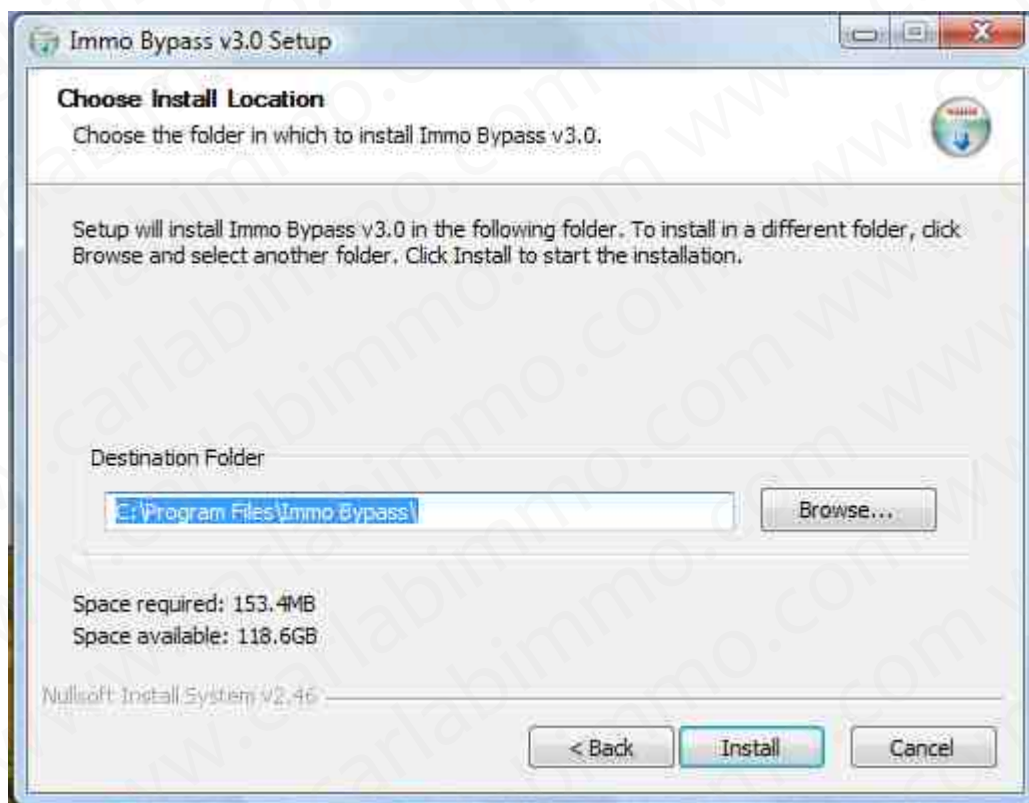
Choose the language



We begin the installation of Immo Bypass On-line



Then, we choose file installation, where the Program is going to be installed



Wait until the installation finish and confirm the correct password in the end of installation.

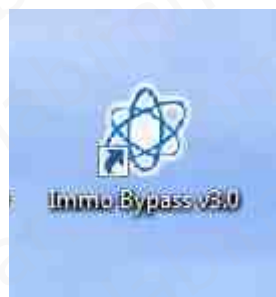
In case, when the computer would not find the Microsoft Net Framework software the setup will add it automatically before the right installation of Immo Bypass **On-line**.



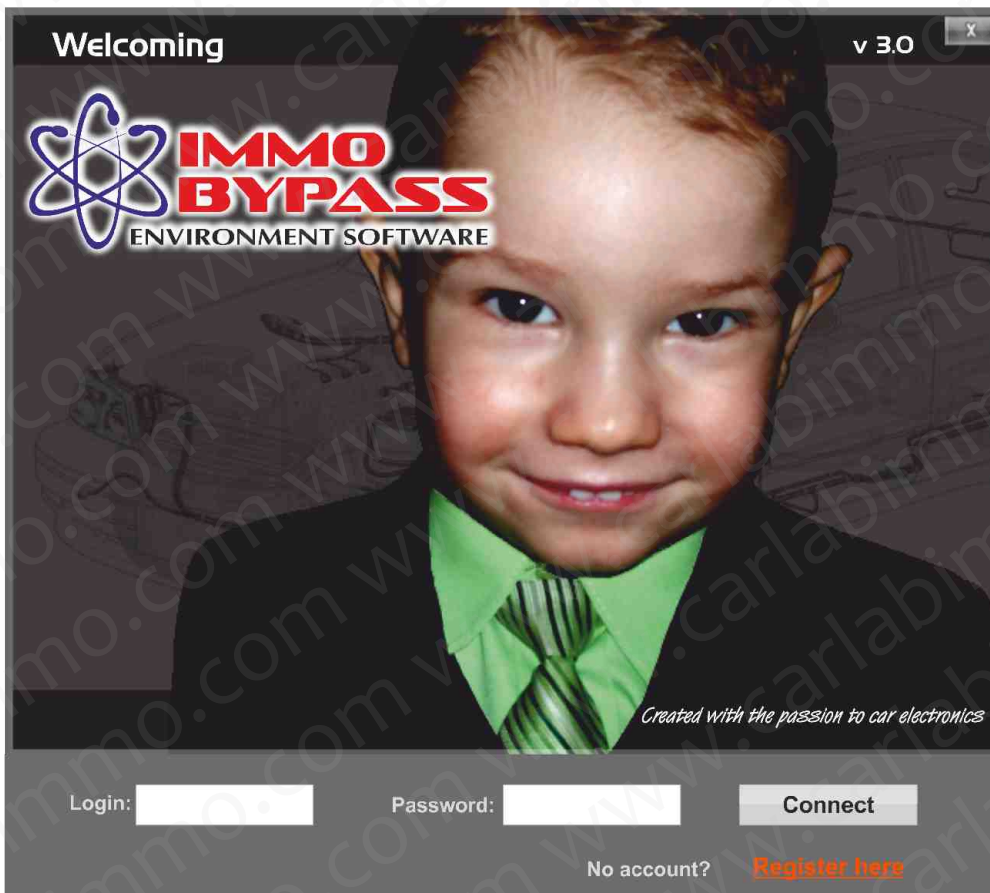
The hall process can take from some to tens minute. It depends on the link speed you are using.

5.2 The registration and subscription.

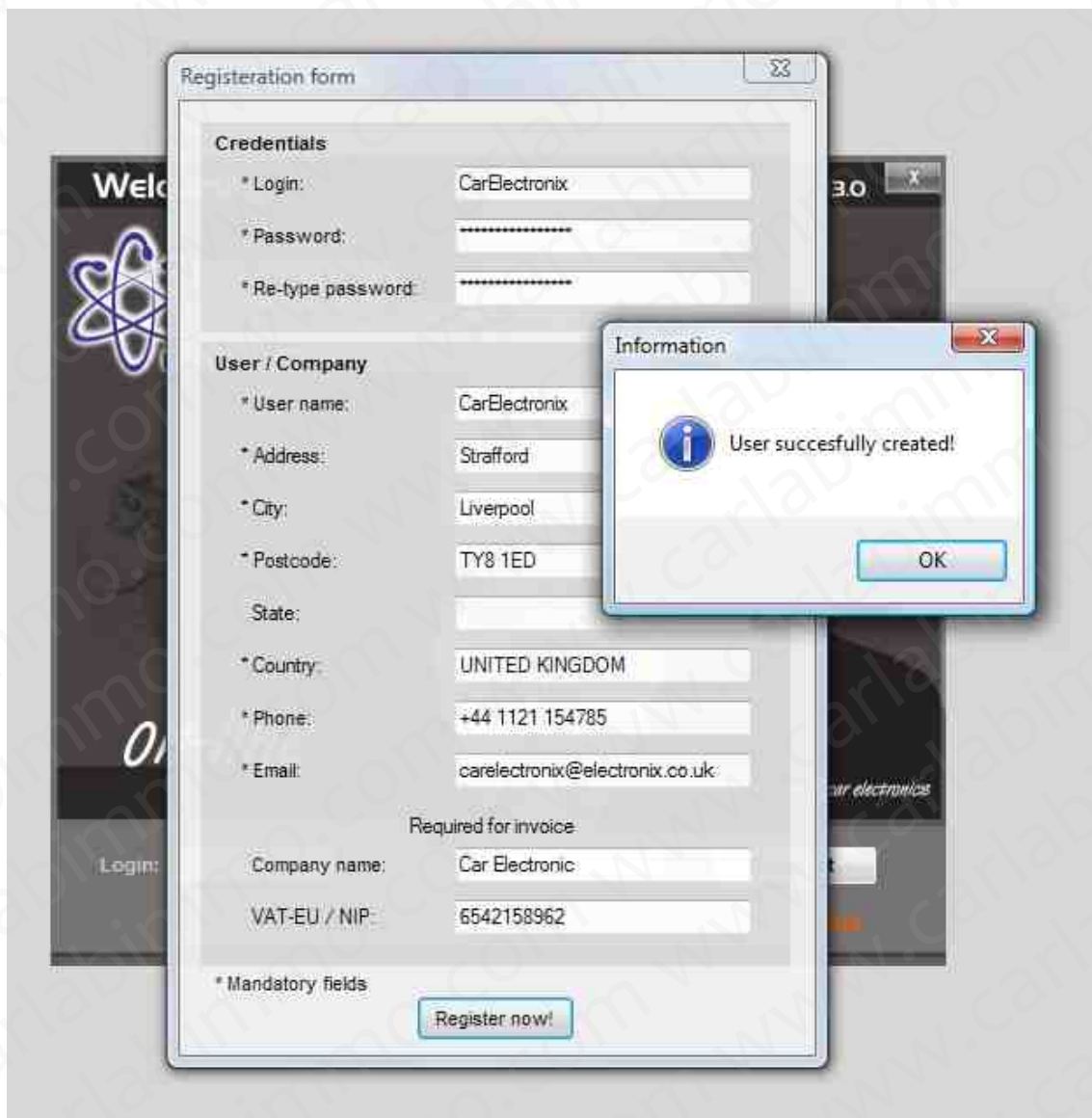
After the end of installation you need to click the 'Immo Bypass On'line' button.



After the first opening the program you need to choose the 'Register' button.



You need to fill in the register form.



The image shows a web registration form titled "Registration form" with a close button (X) in the top right corner. The form is divided into two main sections: "Credentials" and "User / Company".

Credentials section:

- * Login: CarElectronix
- * Password: [masked]
- * Re-type password: [masked]

User / Company section:

- * User name: CarElectronix
- * Address: Stafford
- * City: Liverpool
- * Postcode: TY8 1ED
- State: [empty]
- * Country: UNITED KINGDOM
- * Phone: +44 1121 154785
- * Email: carelectronix@electronix.co.uk

Required for invoice section:

- Company name: Car Electronic
- VAT-EU / NIP: 6542158962

* Mandatory fields

Register now!

An "Information" dialog box is overlaid on the form, displaying a blue information icon and the text "User succesfully created!". There is an "OK" button at the bottom right of the dialog box.

After filling every required details click on 'Register' button.

























The information about creating a new user- 'User created' will appear on the screen. It will confirm the end of registration.

Period of service






Day
 Year
 Price: PLN

Type of payment:

Direct transfer channels (instant payment)

 <input type="radio"/> mTransfer	 <input type="radio"/> MultiTransfer	 <input type="radio"/> Płać z iPKO
 <input type="radio"/> Bank Zachodni WBK - Przelew24	 <input type="radio"/> Przelew z BPH	 <input type="radio"/> Pekao24 Przelew
 <input type="radio"/> ING Bank Śląski	 <input type="radio"/> Millennium - Płatności Internetowe	 <input type="radio"/> Nordea
 <input type="radio"/> Płać z Citi Handlowy	 <input type="radio"/> Raiffeisen Bank	 <input type="radio"/> MeritumBank Przelew
 <input type="radio"/> Płać z Alior Bankiem	 <input type="radio"/> Płać z City Handlowy	 <input type="radio"/> Pay Way Toyota Bank
 <input type="radio"/> Bank BPH	 <input type="radio"/> Fortis Bank S.A.	 <input type="radio"/> BS Wschowa
 <input type="radio"/> Getin Bank	 <input type="radio"/> SkyCash	 <input type="radio"/> Pekao24
 <input type="radio"/> Alior Bank	 <input type="radio"/> PayPal	 <input type="radio"/> Karta płatnicza

Cash payment channels

 <input type="radio"/> Przelew/Przekaz	 <input type="radio"/> Moje Rachunki	 <input type="radio"/> Zapłać w Żabce
 <input type="radio"/> TransKasa	 <input type="radio"/> Kantor Polski	

Pay

You need to choose the time of an access W(24h - 50PLN, 365 days for 500PLN) and mark the way of doing the payment.

If your credit card Visa MasterCard doesn't work you need to choose PayPal !!! Attention: abroad clients – if you have problems with your Paypal payment with Dotpay please transfer the money directly to

Paypal account: tomek@carlabimmo.com

The information about your payment:

Seller: CARLABIMMO Iwona Piotrowska
Description: Car Electronix

Amount: 500.00 PLN

Chosen payment channel:

 PayPal

Bank account's information

First name:
Last name:
Email:

Click to buy Dotpay Money Back Guarantee for 25.00 PLN.
Ensure satisfaction or your money back (physical goods only).

I accept Dotpay Regulations of Payments

I agree to the use of my personal data by Dotpay S.A. for the purpose of conducting a process of payments in accordance with applicable Polish laws (Act of 29.08.1997 for the protection of personal data, Dz. U. No 133, pos. 883, as amended). I have the right to inspect and correct my data.

Please wait ...



Please fill in the details about your account and confirm them.

After the confirmation the log in to our account page will open automatically. Due to the kind of payment you have chosen fill the required details and make the transfer.



Aby zapłacić za zakupy zaloguj się w serwisie internetowym iPKO

LOGOWANIE

Numer klienta: ?

Hasło: ?

Jeśli korzystasz z tokena, wprowadź poniżej odpowiedź z tokena z funkcji "Hasło".

Hasło z tokena: ?

[Zostań klientem iPKO](#)

BEZPIECZEŃSTWO w iPKO

PAMIĘTAJ!
Logowanie do serwisu iPKO nie wymaga podania kodu z karty kodów jednorazowych. Bank również nigdy nie poprosi Cię o podanie jednocześnie linku kodów z karty kodów lub danych karty płatniczej.

[+ więcej o bezpieczeństwie](#)

ZŁOŻ WNIOSEK ONLINE

CENTRUM KONTAKTU

[Napisz do nas](#)

[Infolinia 801 302 302](#)

[Oddziały i Agencje](#)

POMOC

- Słownik
- Przewodnik
- Najczęściej zadawane pytania
- Pierwsze logowanie
- Demo

Uważaj na fałszywą stronę!

Jeżeli podczas korzystania z serwisu internetowego iPKO pojawiła się dodatkowa strona z prośbą o podanie kodu z karty kodów jednorazowych, w celu zainstalowania unikalnego podpisu elektronicznego, prosimy o zachowanie ostrożności i ograniczonego zaufania. Jest to fałszywa strona www, służąca do wyłudzenia kodów z kart kodów jednorazowych. **W tej sytuacji nie należy podawać kodu z karty kodów! Więcej**

Uważaj na fałszywą stronę!

Max Pożyczka Mini Rata

Poznaj nowe możliwości iPKO!

www.pkobp.pl Gwarantowanie depozytów

Kod BIC (Swift): BPKOPLPW

© 2008 PKO Bank Polski

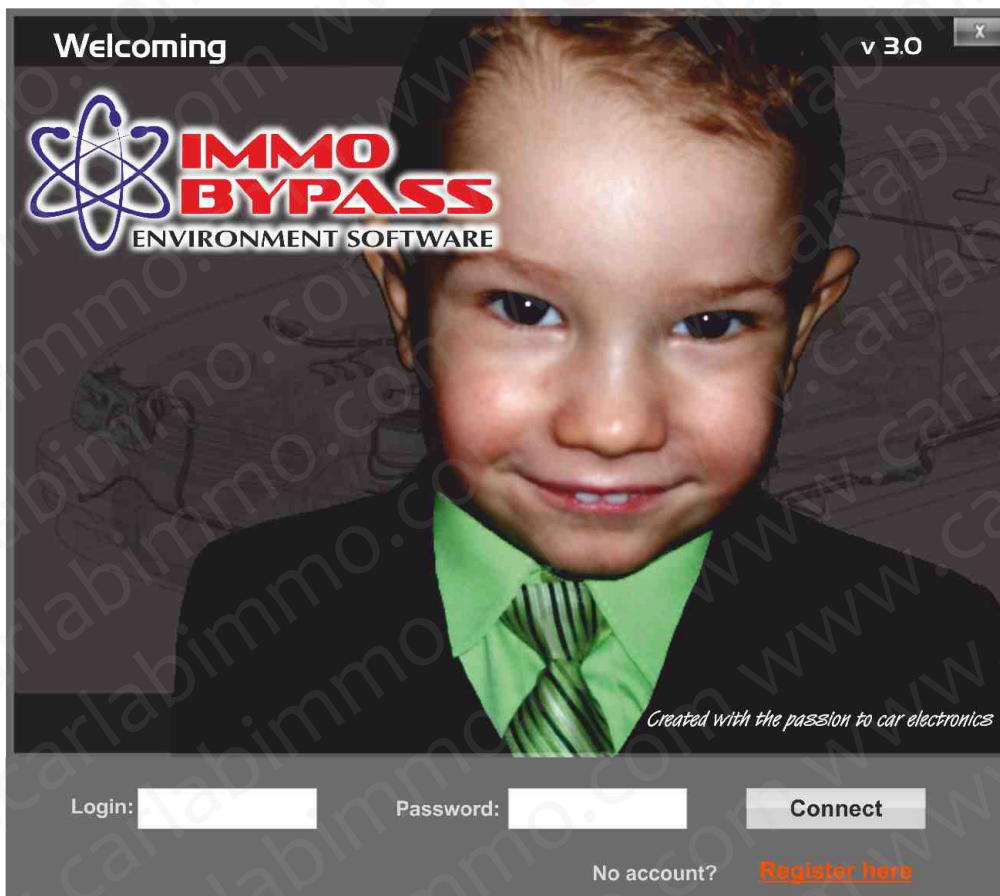
After the payment please close the program and turn it on after few minutes. The confirmation of money transfer can take up to 2 hours.

5.3 First Start of Immo Bypass On-line

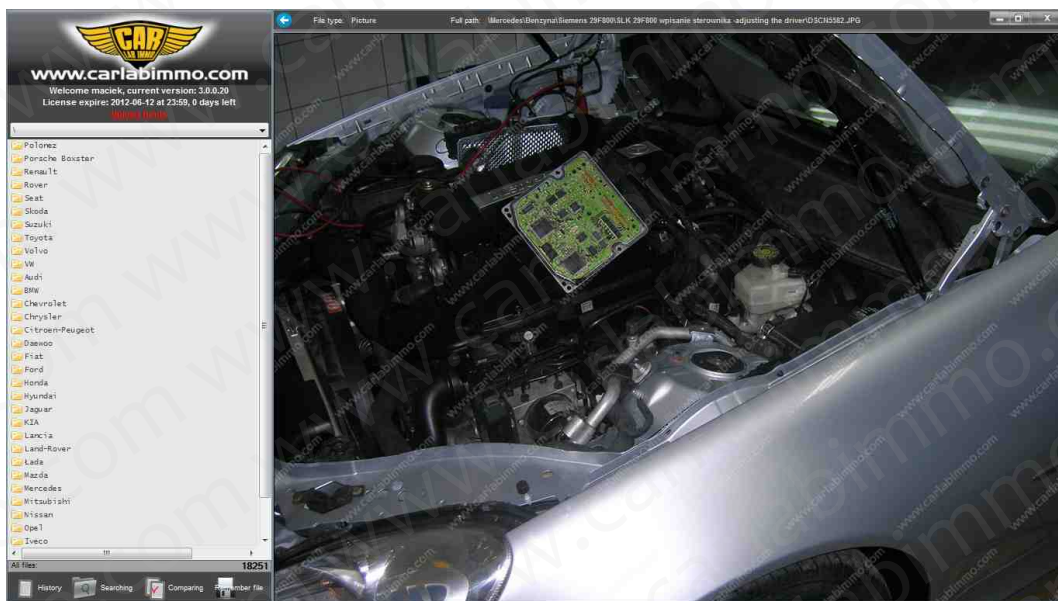
Choose the program language...



In the welcome window please enter you login and password.



After the automatic files loading the program is ready to use.



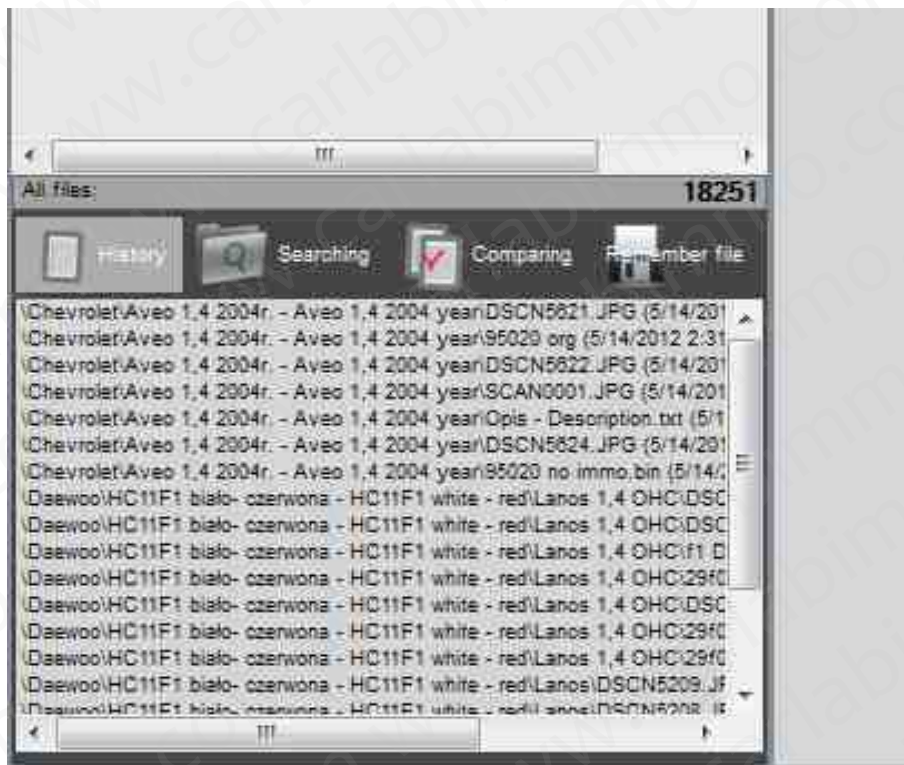
5.4 General information about the use of Immo Bypass On-line

In the upper left corner you have an information about expiration day.

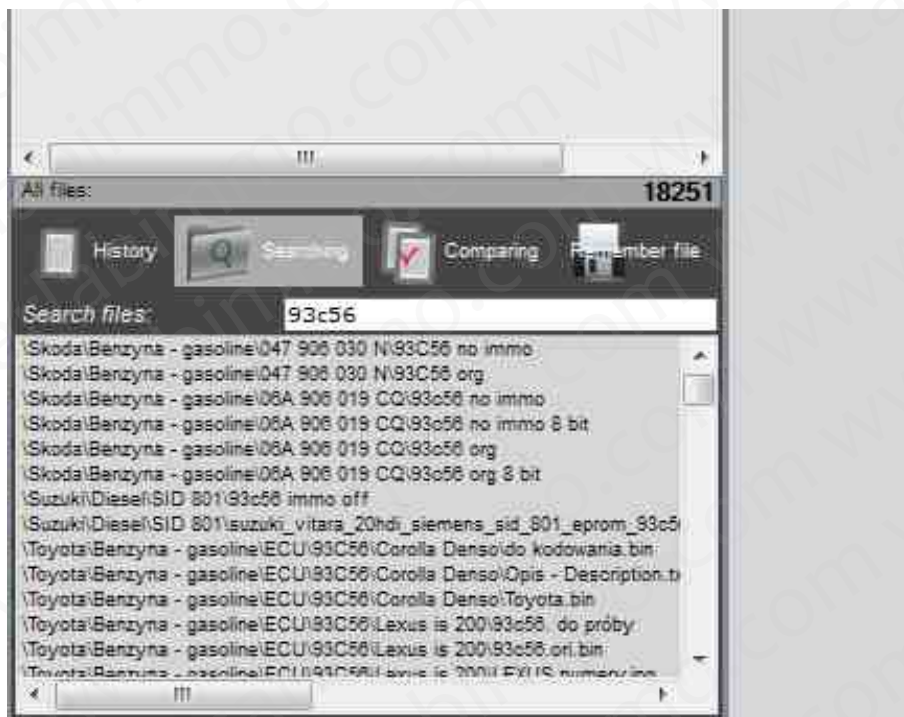


There is also the automatic reference 'Top up' with a possibility to extend the use of Immo Bypass On-line.

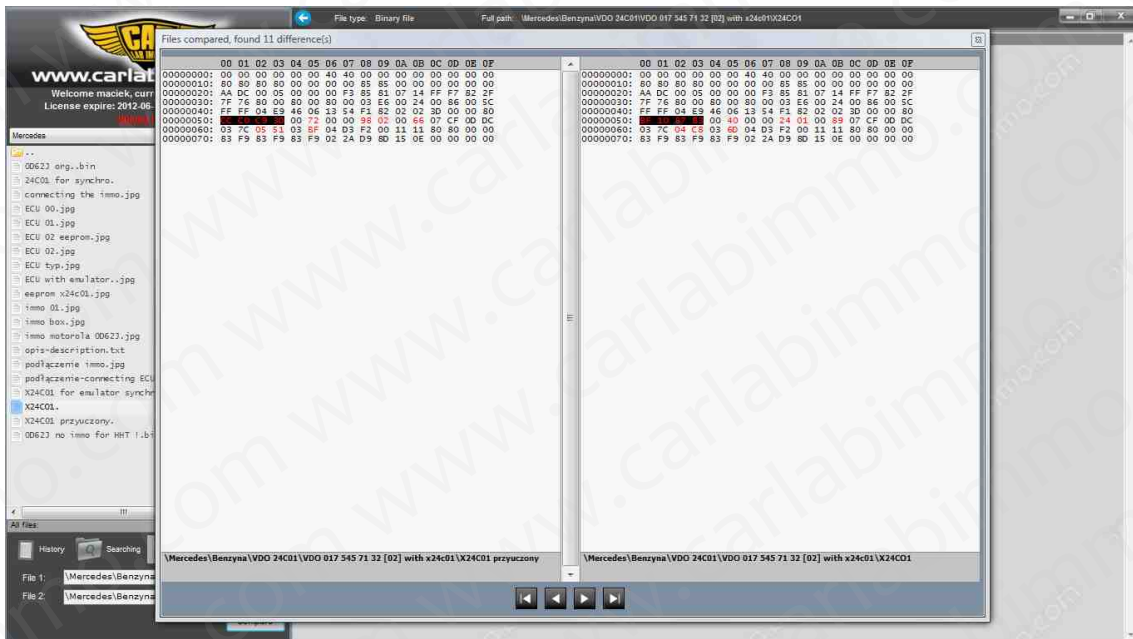
The 'History' sub page allows to do 20 searches of last used files.



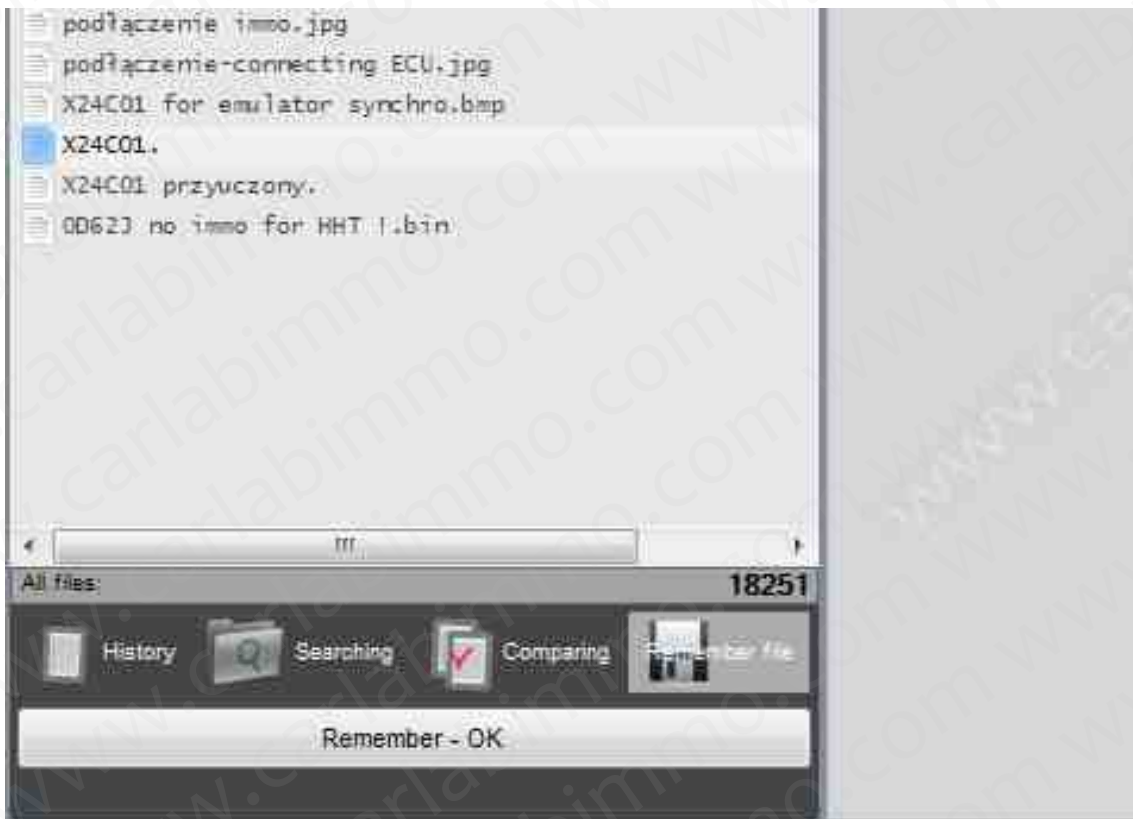
The 'Searching' sub page includes a function of searching the right ECU and descriptions by filling ECU's number or key word.



The 'Compare' sub page. - after filling the 1st file and 2nd correctly the list full with details will appear includes the original content and content without immo.



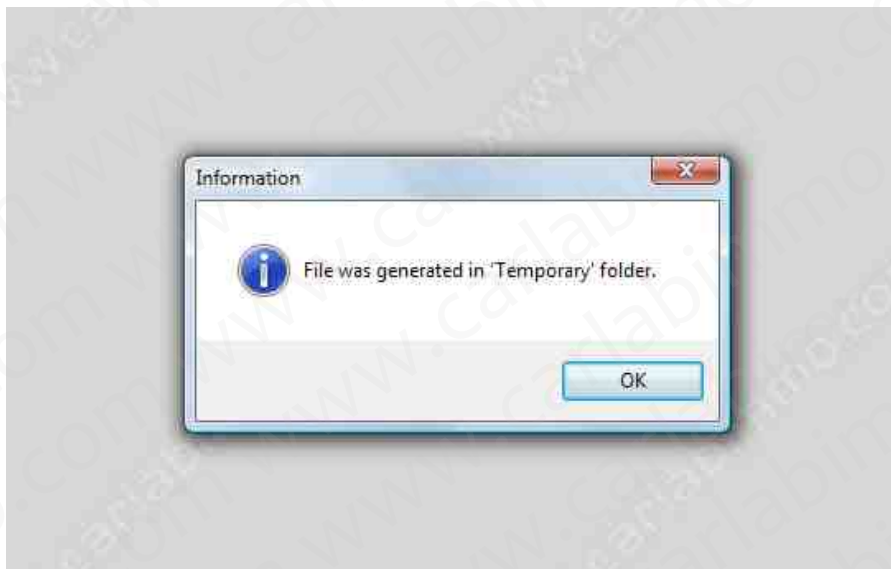
The compared files will open in new window and all differences will be marked red.



The 'Saved file' sub page allows to export the saved files.

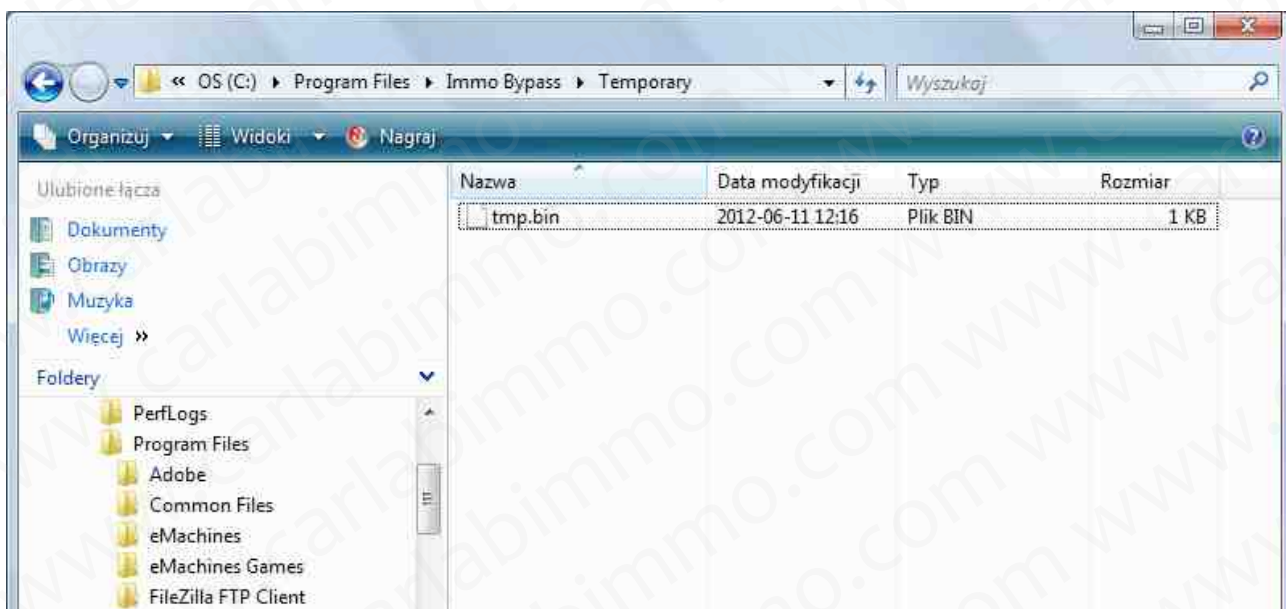
Please make a double click in the upper right window of the program.

Then click the 'Save' button and 'Save - OK'.



The information which confirmed the file saving will appear in 'Temporary' folder.

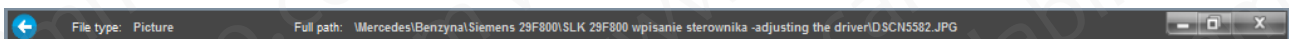
Default location: C:\Program Files\Immo Bypass\Temporary



After the next start of the program and between every saving file you need to wait 300 seconds.



By clicking on the blue arrow you can open the description or picture to full size.



What is more, on the navigational panel you have an information about an address where you are actually staying.

Because of expanded function of browsing there is a possibility of increasing or decreasing the size of the picture by using the +/-buttons or scroll wheel.



If there will a problem during the access to the program you can use our technical support after the registration on our website and describing the problem on our forum.

Support forum – <http://carlabimmo.com/forumang/>

If you would like to use the support read it urgently!

The technical support will be grant after receiving the car details and precise description of the problem.

Below you can find information which can help you in wording the question. It can accelerate finding the solutions:

1. THE BRAND OF THE CAR AND THE YEAR OF PRODUCTION,
2. CAPACITY AND THE TYPE OF GASOLINE,
3. DRIVER'S PICTURES - STICKER, PLUG, PLATES,
4. THE CONTENT OF ORIGINALS RECORDS,
5. THE DRIVER NUMBERS AND INDICATION OF MEMORY,
6. WHAT EXACTLY THE PROBLEM REFERS TO ?

Attached contents have to be packed and secured by password. If the conditions wouldn't be kept the user receive the warning and the post will be deleted. If the user wouldn't abide the following rules the account will be blocked.

The screenshot shows the CarLabimmo Forum interface. At the top, there is a logo for 'CAR LABIMMO' and the text 'CarLabimmo FORUM'. A moderator profile for 'Michał Stankiewicz' is visible. The main content area contains a table of forum topics under the heading 'SUPPORT FOR PRODUCTS'. The table has columns for 'TOPICS', 'POSTS', and 'LAST POST'. Below the table, there is a login/register section with fields for 'Username:' and 'Password:', and a 'WHO IS ONLINE' section showing 'In total there is 1 user online'. At the bottom, there are statistics and a footer with copyright information.

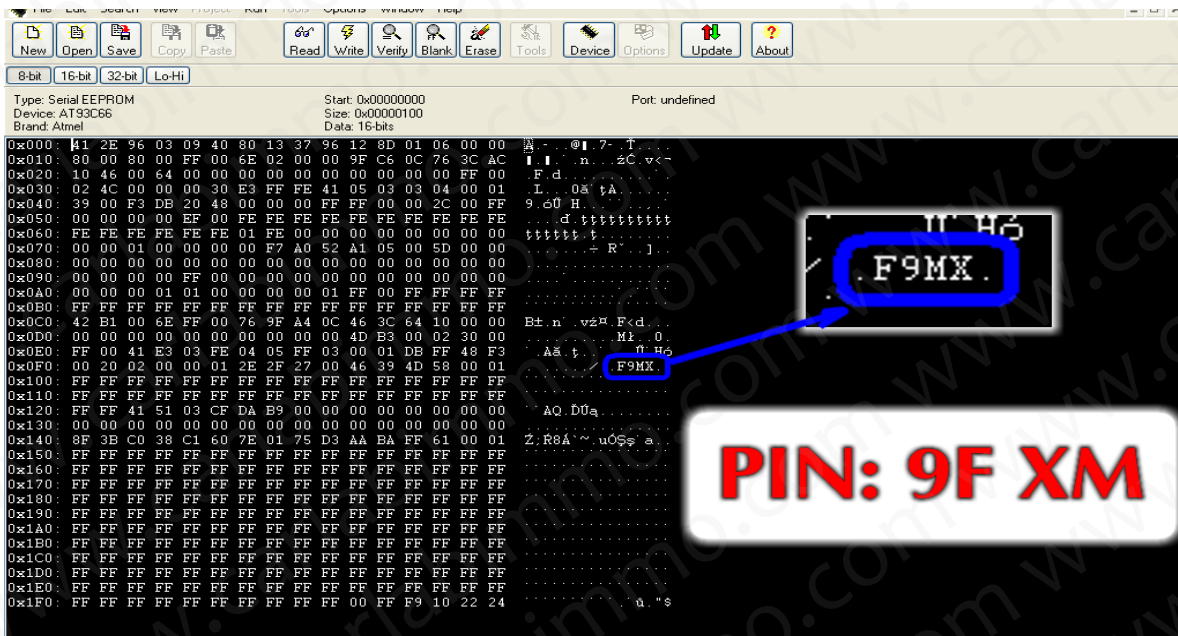
	TOPICS	POSTS	LAST POST
Emulators IMM0 Moderator: michal.carlabimmo	20	89	by Stephan ↑ 31 May 2012, 8:44
Emulator seat occupant detector Moderator: michal.carlabimmo	3	7	by rusdlu ↑ 31 May 2012, 12:23
BYPASS Moderator: michal.carlabimmo	1	1	by michal.carlabimmo ↑ 07 May 2012, 13:06
IMMO BYPASS Moderator: michal.carlabimmo	21	78	by Valek ↑ 04 Jun 2012, 7:34

Section 6. Setting the codes



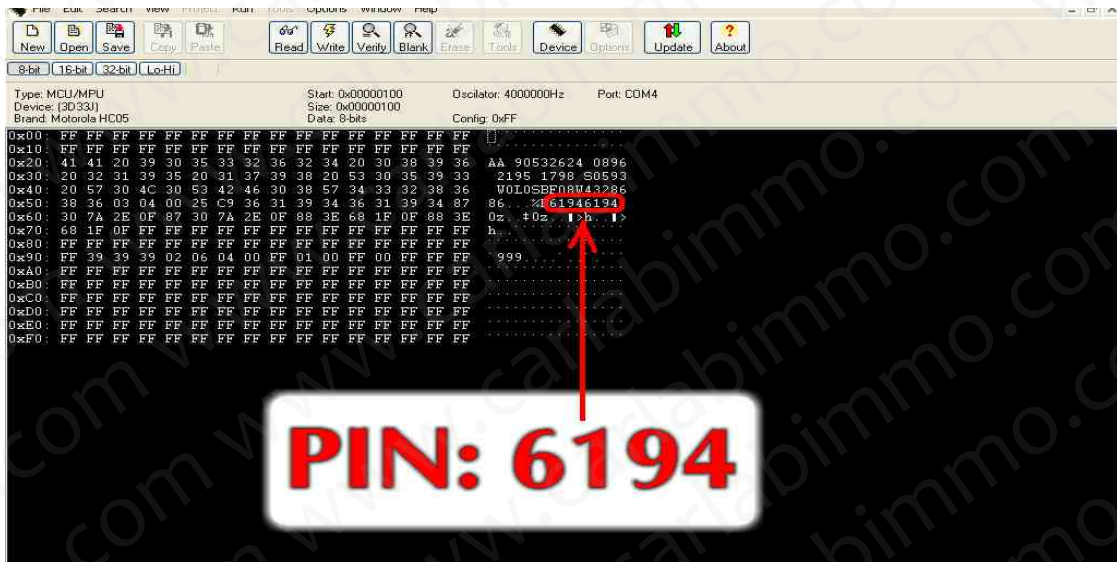
White Audi with 93c46 memory.

After reading the eeprom memory, the record HEX should be change on DEC, sometimes replacing in HEX. The pin's numbers in VW after 2000 year are usually between the chassis numbers.



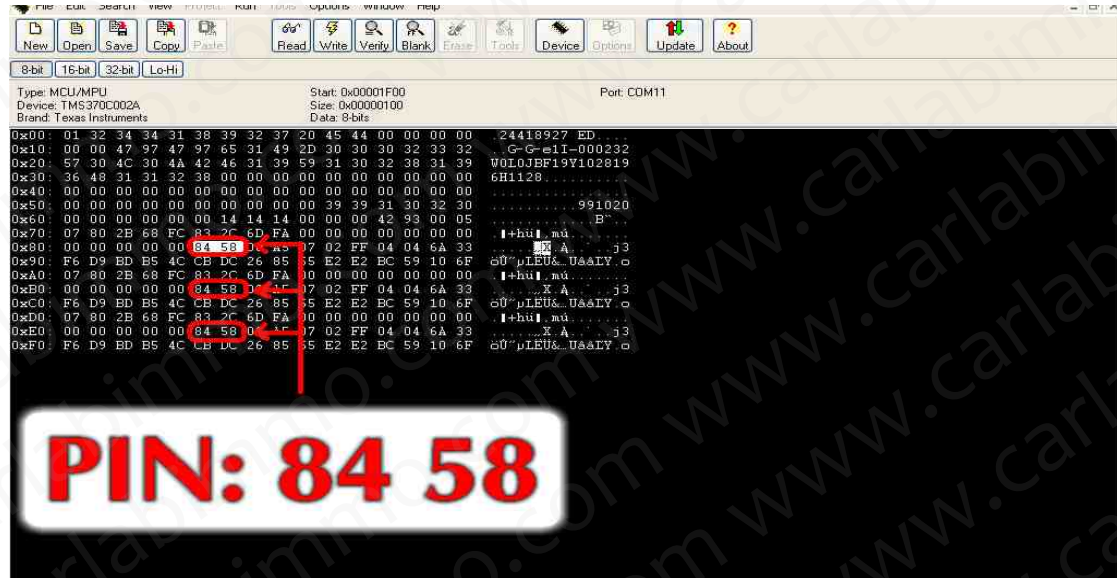
Peugeot 406 2,0 Hdi 2001

The pin is red from BSI.



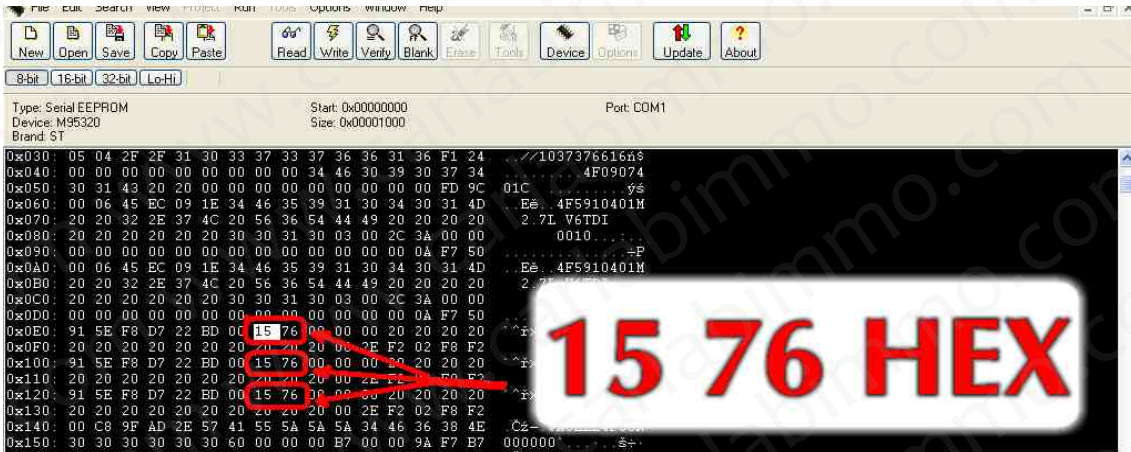
PIN: 6194

Opel - Immo on motorolla HC05



PIN: 84 58

Opel - Immo on TMS



1576 HEX = 5494 DEC
PIN 05494 !!!

Engine work driver EDC16

Audi A6 2006r. 2,7 Tdi

95320 memory

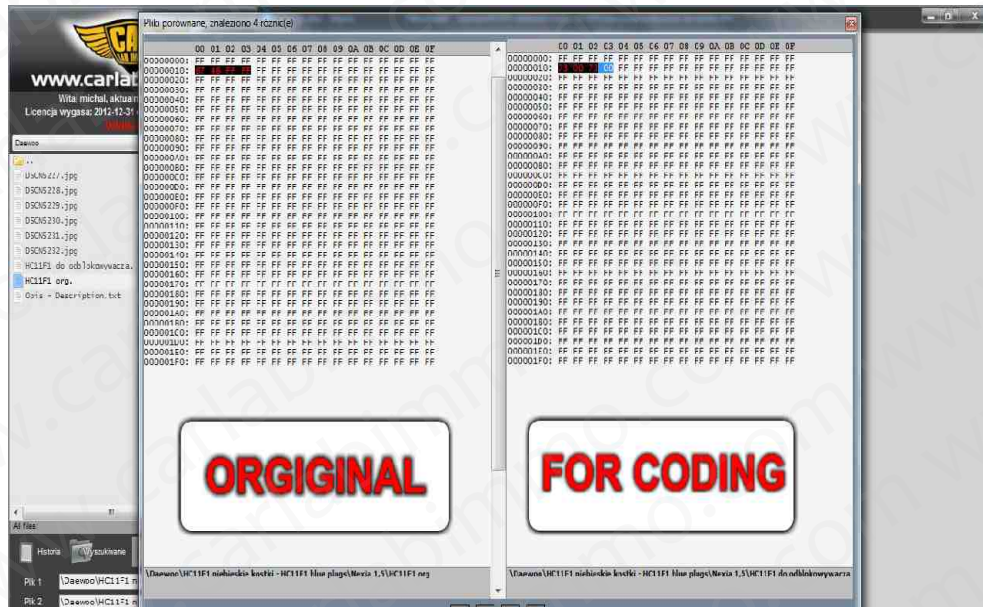
Section 7. Comparing the files

To manage this function you need to mark and drag the content to the right scope.



The comparing files and contents is made to individual search of reviews.

While comparing the ECU's record file and the file from IMMO BYPASS program, the places marked are immo reviews and different values. When you fill the original value in this places with values from comparing you have the content without immo.



Emulation

These are fat changes which are located on the memory in the stand. Because of this, you can program it as many times as you want. There is no need to soldering in our soldering out the system.

You can use the PLCC stands to the processors.



Smd-dip stands can be used to the memories with soldered cables.



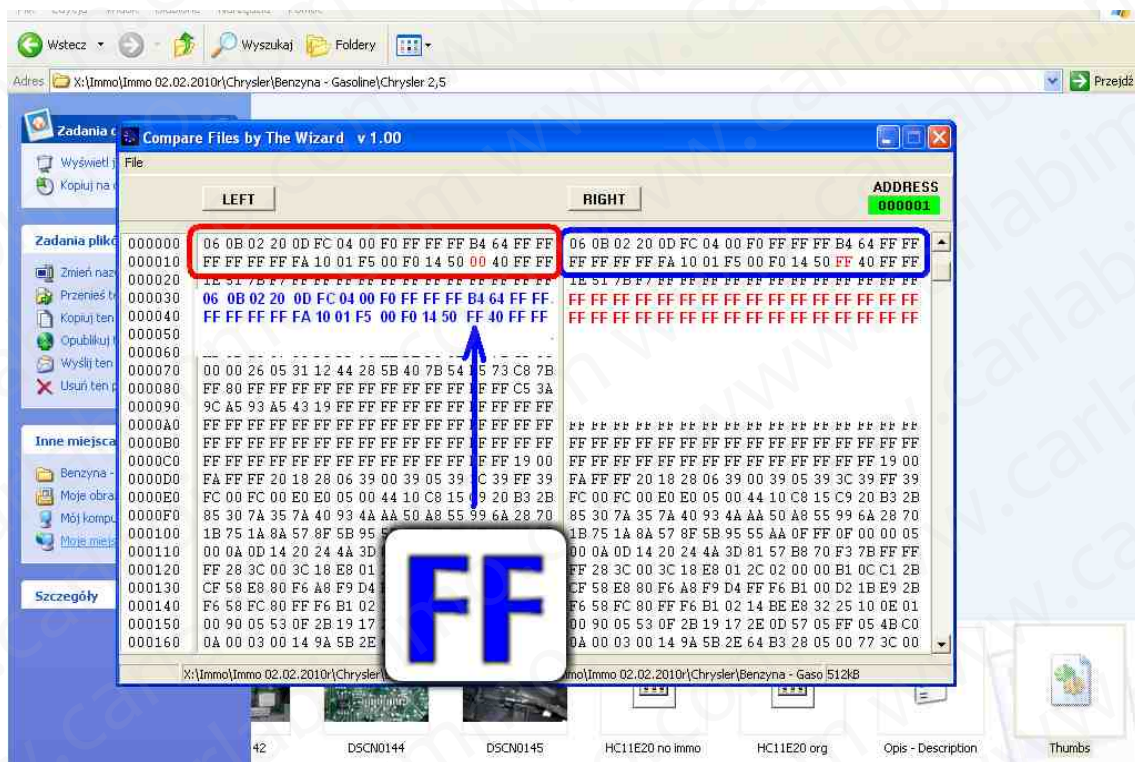
Section 8. Adjusting the parameters

There is a necessity to adjust the older settings after unblocking.

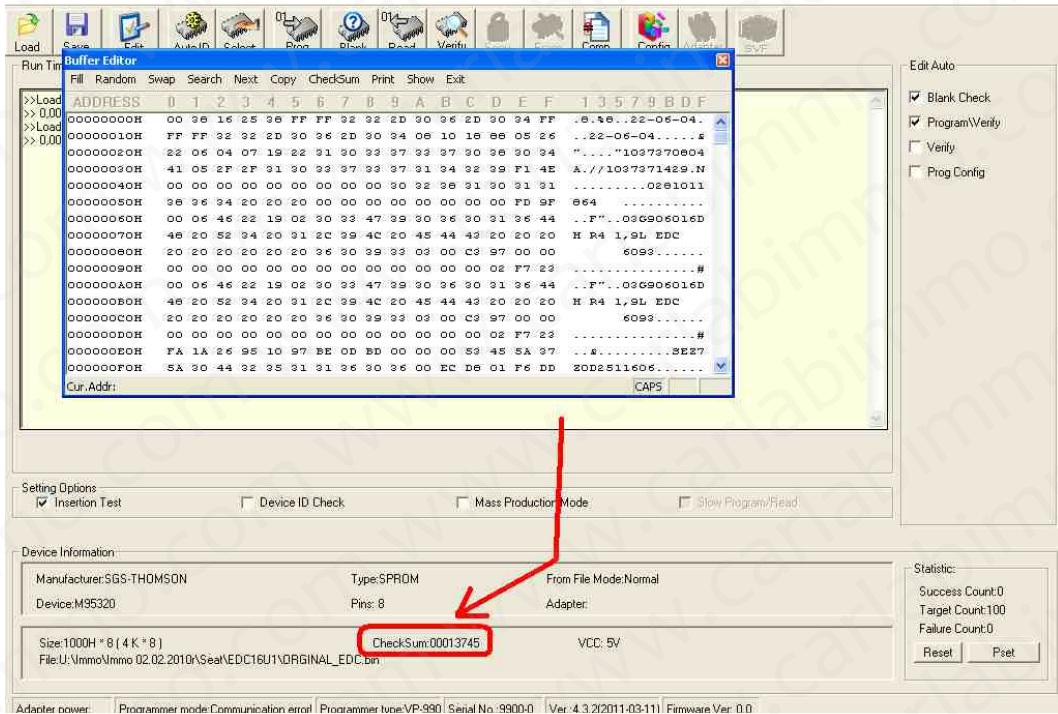
To manage it you need to use the original and recorded content to rewrite line by line of memory map to get the proper action of driver.

The memories which have been soldered out in the driver can be glued with hot glue to some big processor. It may help in case reinstatement the software. You don't need to look for it because it is glued.

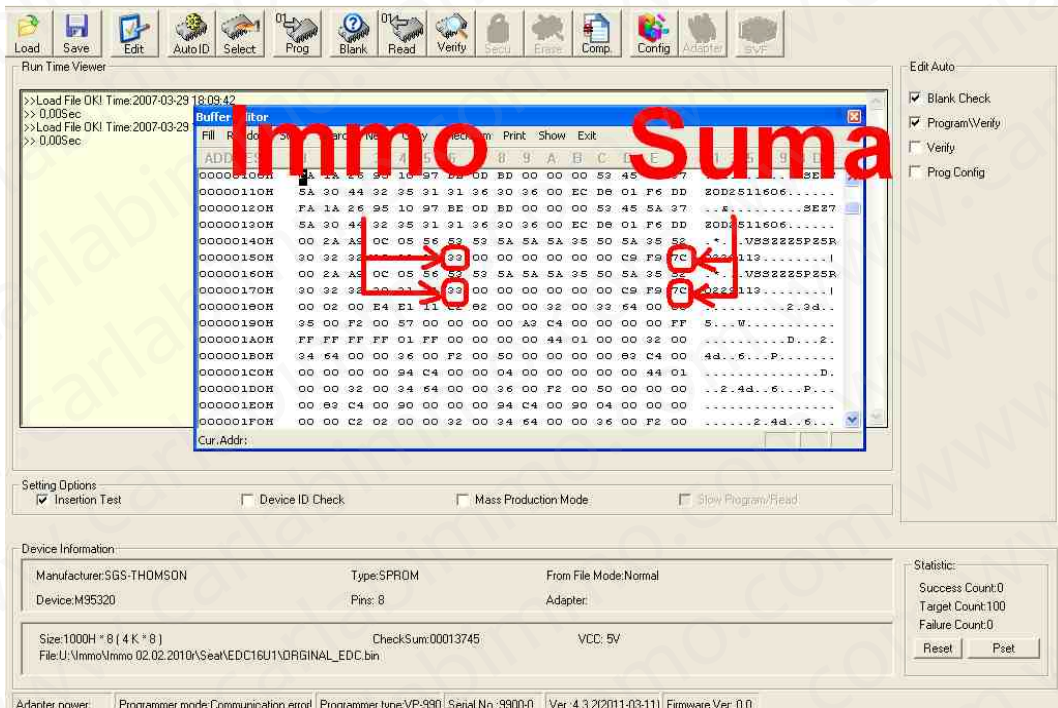
What is important, after you finish you need to secure the access to the system in case of unauthorized copy by flooding the memory with hot glue or covering the whole with varnish. What is more you need to create a seal on the driver.



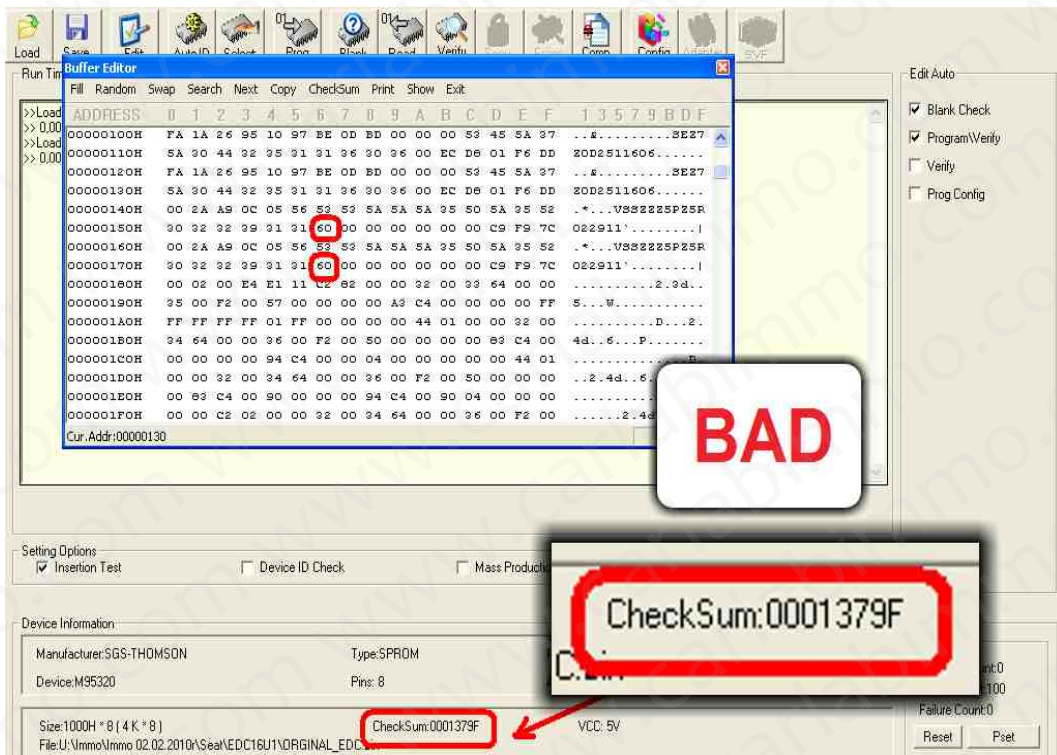
Section 9. The methods of enumerating the checksums



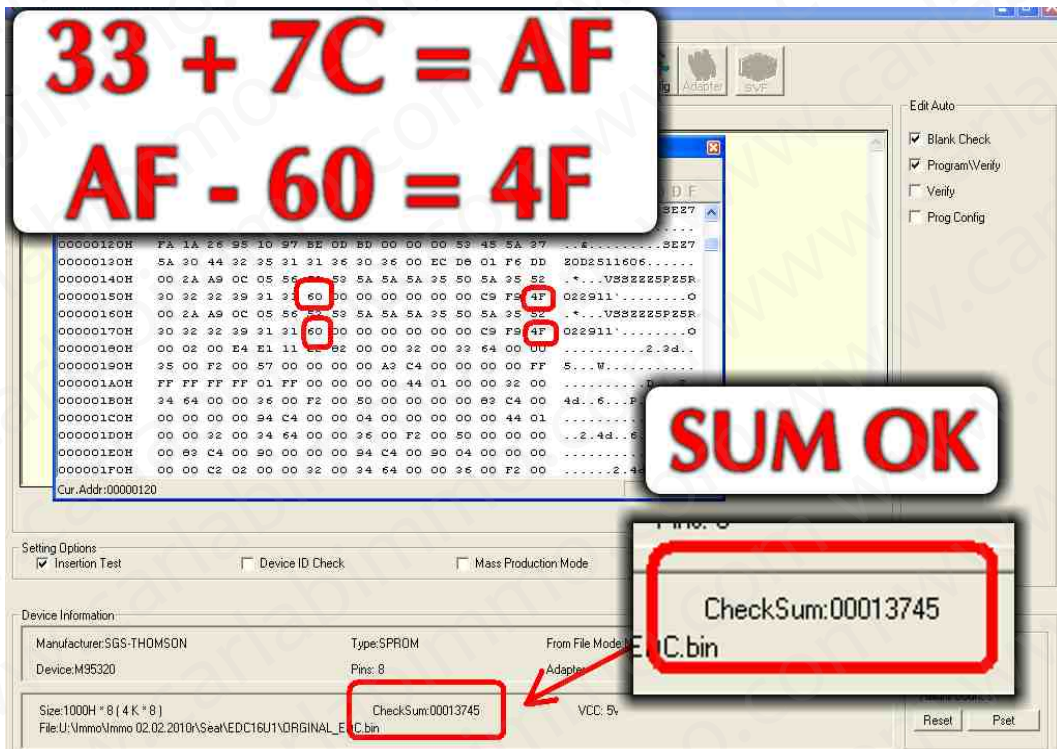
The program is enumerating the checksum in every map.



Immo in EDC16 VW is written in 156 and 176 address as a 33 and 73 value. The checksum is written in 15F and 17F address.



If you change just the immo value on 60 your car would not start.
The program in driver will be damaged



The check sum is enumerating in HEX mode using the Windows calculator.

Section 10. Immobilizer's emulators



The types of emulators immo

Emulator Immo Audi, Seat, Skoda, VW without CAN - 99 zł

- Vw, Audi, Seat, Skoda - W1, W2 systems to about 2000 year.

Emulator Immo Audi, VW Hitachi – 99 zł

Emulators immo VW Hitachi – it works in VW Audi Seat Skoda cars with Hitachi engine work drivers to approximately 1997 year.

Audi, Seat, Skoda, VW – Valve code – 99 zł

Emulator immo - VW Valve Code can be use to unlock the valve code on injection pump in vehicles 1,9 D.

Emulator Immo VW EDC15-Tdi - 170 zł

This emulator can be sell only as universal emulator Julie.

Vw, Audi, Seat, Skoda - systemy W2,W3 from 2000 to 2004 year(2006 year, even up to 2008).

Emulator Immo VW EDC16 K-Line - 170 zł

This emulator can be sell only as universal emulator Julie.

Tdi EDC16 – immo off, immo on 0 281 011 XXX, 0 281 012 XX, 0 281 013 XXX, 0 281 014 XXX

Emulator Immo VW EDC16 z CAN 1,9 2,0 Tdi – 170 zł

This emulator can be sell only as universal emulator Julie.

It has been tested on the following drivers:

0 281 012 XXX :

0 281 012 113 Audi A4 2,0 Tdi 2008 year

0 281 012 545 Audi 1,9 Tdi 2007 year

0 281 012 546 Audi 1,9 Tdi 2006 year

0 281 012 654 Audi 2,0 Tdi 2005 year

Emulator Immo VW EDC16 z CAN 2,7 3,0 Tdi – 170 zł

This emulator can be sell only as universal emulator Julie.

It has been tested on the following drivers:

0 281 013 XXX :

0 281 013 177 Audi A6 2,7 Tdi 2007 year

0 281 014 XXX :

0 281 014 384 Audi A6 2,7 Tdi 2007 year

Emulator Immo VW ME7 – 170 zł

This emulator can be sell only as universal emulator Julie.

It works in cars with BOSCH drivers with capacities:

1,4-1,8-2,0-2,4-2,6-2,8-3,0-3,5-4,2 from 1999r. To about 2008r. ,in cars with 2 plugs and Bosch drivers.

It has been tested on the following drivers:

0 261 201 144 Golf V 1,4 2002-2006.

0 261 204 873 Audi A4/Passat 1,8 1999.

0 261 207 360 Bora 2,0 2000-2005.

0 261 206 123 Passat 2,8 2000.

0 261 206 019 Audi A8 4,2 2000

Emulator Immo BMW - 400 zł

- It is mobile in cars with systems EWS II and EWS III 3.2

Each emulator is individually created to the car after reading the ISN code. After receiving the EWS the service costs 600 PLN.

Emulator Immo Citroen, Peugeot with CAN - 170 zł

This emulator can be sell only as universal emulator Julie.

EDC16 drivers

- 1,4 HDI

- 1,6 HDI

EDC15 drivers

- 3 plugs

Emulator Immo TMS 374 - 149 zł

- Citroen, Peugeot drivers:

Sagem SL96 ; Magnetti Marelli 1AP20, 1AP40, 1AP41, 1AP43, 1AP80, 1AP81, 1AP83,1AP90

- Renault drivers:

Siemens Fenix 5 ; Sagem Safir 1 ; Sagem Safir 2

Emulator Immo Daewoo - 99 zł

- ECU with white - red plug with Motorola HC11F1 processor,

- ECU with blue plugs Motorola HC11F1 processor,

Emulator Immo Matiz, Tacuma, Lanos 1,4 hybrid - 99 zł

- Matiz ECU Siemens

- Matiz Engine Control Module KEMSCO

- Tacuma Engine Control Module KEMSCO

- Lanos Engine Control Module 1,4 OHC hybrid

Emulator Immo Fiat without CAN - 99 zł

- Citroen, Fiat, Peugeot JTD with immo, ECU 2 plugs,

- Alfa, Lancia, Fiat 1,9 JTD 2,4 JTD with immo, ECU 5 plugs,

- IAW49F Fiat Bravo 1,6 16V

- Fiat Seicento, Panda 1,1 8V IAW 4AF

- Lancia Kappa 2,0 16V Turbo ; 2,0 20V ; 2,0 16V

Emulator Fiat with CAN 5SF 6F3 - 170 zł

This emulator can be sell only as universal emulator Julie.

Emulator immo FIAT replaces damaged immobilizer or the car key. Device is self-learning a computer code.

Use:

Fiat with CAN drivers 5SF i 6F3



Emulator Immo Kia - 99 zł

- Kia Sportage 2,0 Td -ZEXEL drivers

Emulator Immo Mercedes CR without CAN - inferred - 99 zł

- E210 2,2 diesel Lucas 1 plug,
- 1,8 ; 2,0 ; 2,3 gasoline driver hybrid Siemens

Emulator Immo Mercedes CR1 z CAN WSP - 149 zł

- Vito 2,2 CDI 5 plugs
- A-class 1,7 CDI 5 plugs
- EDC 1 plug 2,5 Td 2,9 Td 3,0 Td with mechanical and electronic ignition switch,
- ECU BOSCH with HC11E9 vehicles with engines 320 – 6 cylinder 430 – 8 cylinders ML320 and 2,0 gasoline SLK 1998 year with mechanical ignition,
- Lucas with 4 plugs E - Class 2,2 diesel with mechanical and electronic ignition switch
- A - Class ECU VDO MSM 1,4 - 1,6 - 1,9 gasoline

Emulator Immo Mercedes CR1 with CAN EZS – 170 zł

This emulator can be sell only as universal emulator Julie.

Emulators immo Mercedes CR1 with CAN EZS replaces damaged immobilizers or the car key in Mercedes cars. It works after a change in memory eeprom and personalization by tester HTT or Star Diagnosis.

Use:

Mercedes drivers VDO 2 white plugs with24c02 memory

Immo Mercedes CR1 with CAN infrared– 170 zł

This emulator can be sell only as universal emulator Julie.

Emulator immo Mercedes CR1 with CAN infrared replaces damaged immobilizer or car key in Mercedes cars. It works after a change in memory by HTT or Star Diagnosis tester.

Use:

Mercedes drivers VDO 2 black plugs X24C01 memory.

Emulator Immo Mercedes CR2 CAN WSP - 149 zł

- Sprinter 2,2 CDI 2,7 CDI
- ML 2,7 CDI – 5 plugs,
- 2,7 i 3,2 with electronic ignition.



NOWOŚĆ!



NOWOŚĆ!

Mercedes ESL –Electronic emulation of the steering column lock - 99 zł

The first type of ESL - old one.

The second type of ESL - new one.

Works with ignition switches numbered :

- 208 545 00 08 208 545 01 08
- 208 545 02 08 208 545 03 08
- 210 545 00 08 210 545 01 08
- 210 545 02 08 210 545 03 08

Emulator Immo Nissan from 2000 to 2002 year 170 zł

This emulator can be sell only as universal emulator Julie.

- drivers from 2000 to 2002 r – immo NATS
- 2,2 diesel 5 plugs with 24c02 memory
- 1,5 gasoline Hitachi MEC with 93c46 memory,
- 1,8 i 2,0 gasoline Hitachi MEC with 93c56 memory,

Brands: Almera, Primera, Almera Tino, Terrano

- 0 281 010 141
- 0 281 010 718
- 0 281 010 265
- 0 281 010 708
- 0 281 010 809
- 0 281 010 316
- MEC200

Emulator Immo Opel immo on HC05 - 99 zł

- ECU 1,2 - 1,4 gasoline with two black plugs and processor Motorola HC11E20
- ECU 2,0 2,2 gasoline with memory eeprom 24C02: 0 261 203 629 ; 0 261 203 548

Emulator Immo Renault without CAN - 99 zł

- Sirius 32 without CAN
- Sirius 34 1,4 1,6 2,0
- EMS3132
- 1,9 i 2,2 DCI without CAN
- 1,5 DCI without CAN
- 1,9 Dti 1 plug
- 1,9 Dti 2 plugs
- 1,9 Diesel DCU3
- 2,8 Td
- 3,0 gasoline 1 plug

Emulator Renault Tacho with CAN – Scenic II , Espace IV – 149 zł

Emulator Tacho Renault Scenic, Espace z CAN is created to turn on the instrument cluster on the table to diagnose the fault. Most of segments of display are displayed, making it easier to locate damaged areas.

After connecting the emulator to the instrument cluster.

The emulator allows you to repair the instrument cluster without necessity of visiting the workshop.

Use:

- Renault Scenic II with CAN
- Renault Espace IV with CAN

The emulator can be used repeatedly.

Emulator Immo Suzuki - 99 zł

- drivers with X24C01 memory,
- drivers with OKI memory.

Universal emulator Julie - 170 zł

Universal emulator Julie includes 32 programs immo and 15 air bag mat programs.

To buy emulator visit our website:
www.carlabimmo.com

We state, that we are the only authentic authors of this manual. We possess copyright to this publication. All rights reserved. Unauthorized copying, hiring, lending, public performance will be punished!!! Any trials of unauthorized copying, hiring, quoting prohibited!!! Both service and advertisement constitute copyright and they are the subject to the protection in accordance with the Act from 4th Feb. 1994 on Copyright and Related Laws (Statute Book no. 24 position 93) and protection on the basis of the Act from 8th June 1993 on combating an unfair competition (Statute Book no. 47 position 211).

www.carlabimmo.com

Last update of this manual : 12.06.2012

bypass[®]

Audi, Seat, Skoda, Vw

It turns off or turns on immobilizer through the diagnostic plug OBD

TDI EDC16 - immo OFF, immo ON - K-line + CAN

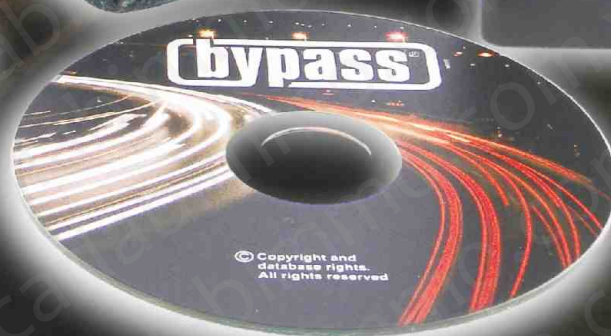
TDI EDC15 - immo OFF, immo ON

Petrol ME 7

Works without quantitative restrictions (you can use it repeatedly in many cars)



2000zt



www.carlabimmo.com