

ORANGES

This module for Orange-5 (O5) programmer is intended to restore factory settings in transponders PCF7941 used in Chrysler remote keys.

The used remote keys are locked with unknown password and are useless for the further using. The module restores the default password and a key can be used as a new one.

The module has been designed for the Chrysler's remote keys, but may be used also on other brands. It should be taken into account that remote functions will be programmed for Chrysler mode and are incompatible for other brands..

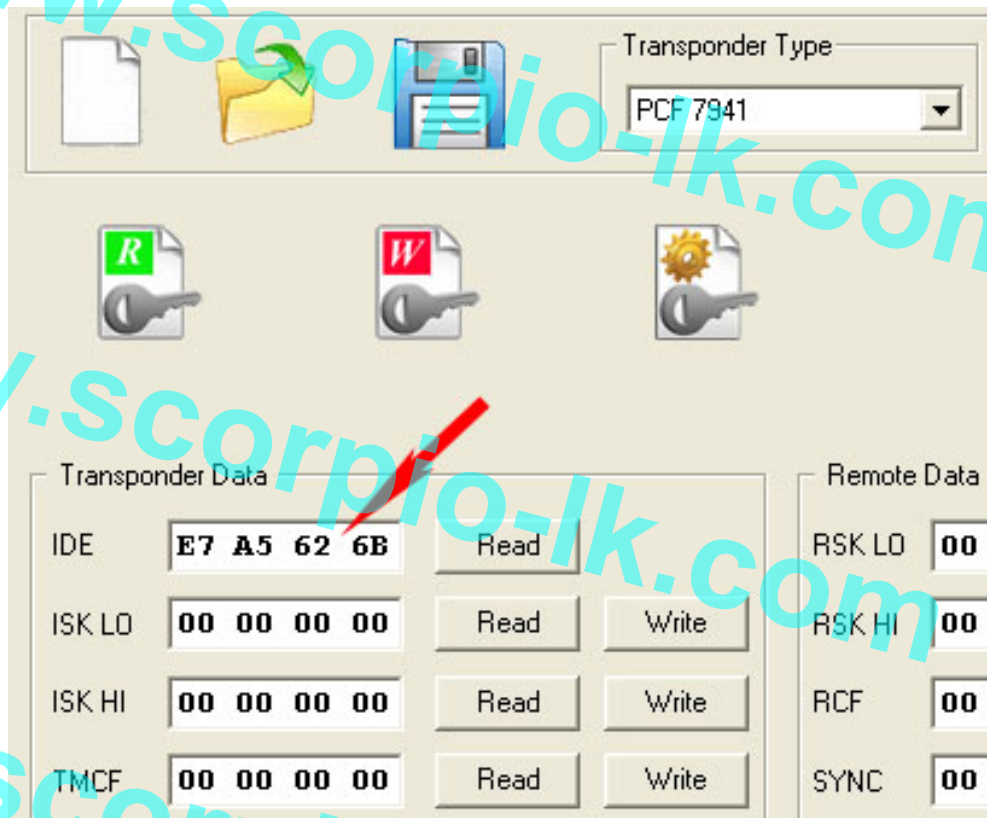
Thereby the module can make Chrysler-compatible key from any PCF7941 of any brand. The module has been extensively tested with FOBIK keys on some cars, including Chrysler Caravan 2013, Chrysler Town and Country 2013, Chrysler 300 2008 , etc.

The transponder functions (to start engine) are the same on all brands, thus it is possible to restore it on any PCF7941 of any brand.

The module provides two functions: RESET and Write ID.

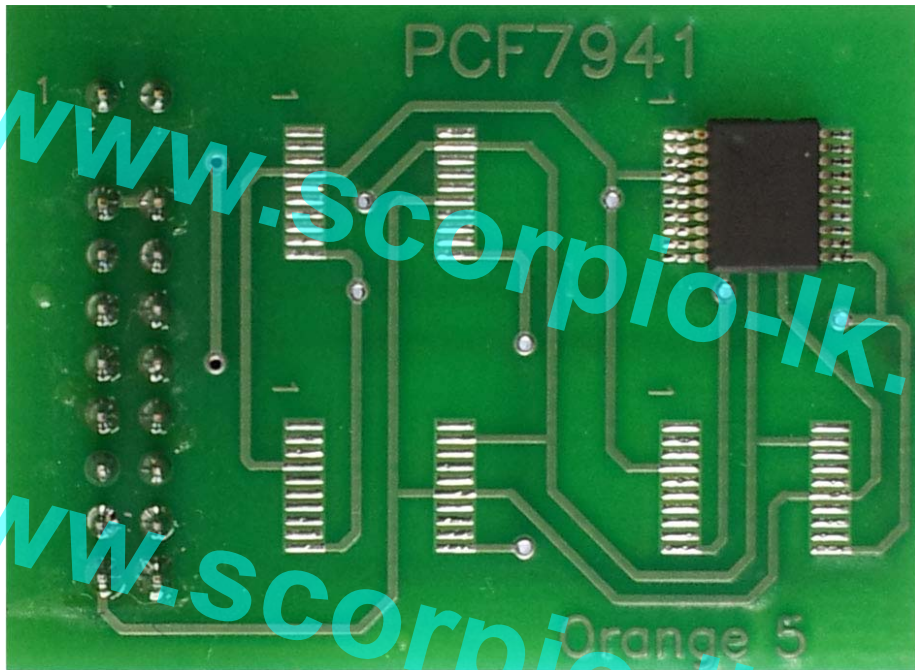
The **RESET** function restores default settings.

The **Write ID** function allows to change the serial number of a transponder that is the Page0 :

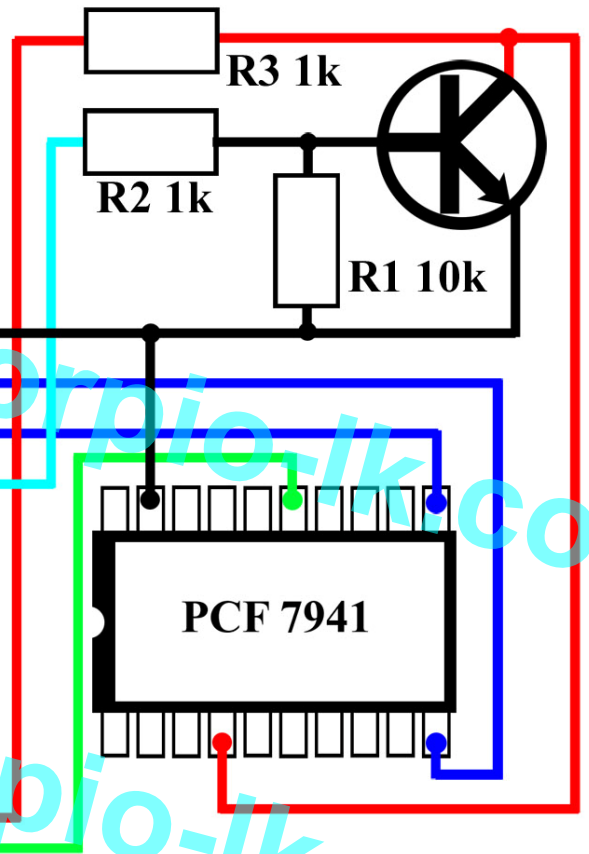
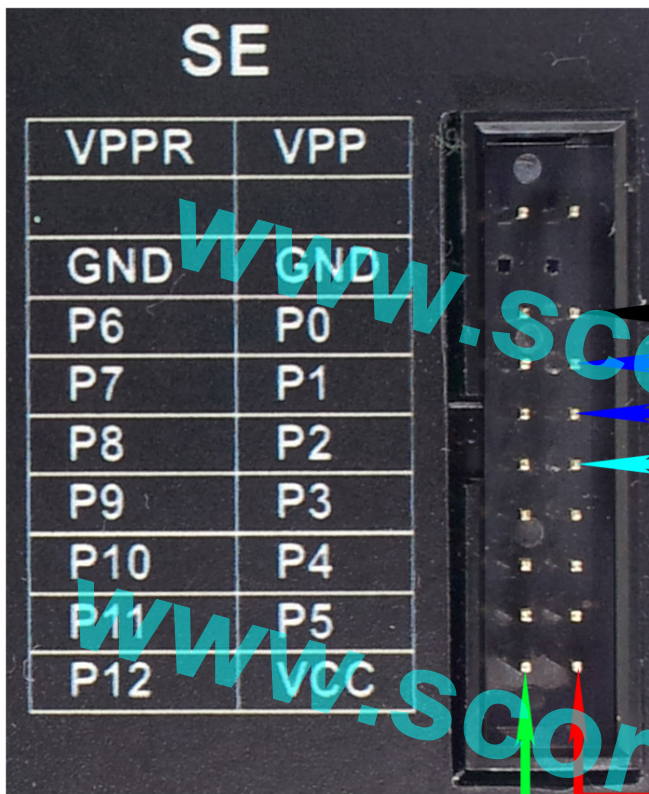


Transponder Data		Remote Data	
IDE	E7 A5 62 6B	Read	RSK LO 00
ISK LO	00 00 00 00	Read Write	RSK HI 00
ISK HI	00 00 00 00	Read Write	RCF 00
TMCF	00 00 00 00	Read Write	SYNC 00

The special adapter “PCF7941” should be used. The layout of the adapter provides the four soldering places, using only one slot at a time, this allows using of the adapter for a long time.



In case of missing the adapter it is possible to make connections manually according to the following scheme:



www.scorpio-lk.com

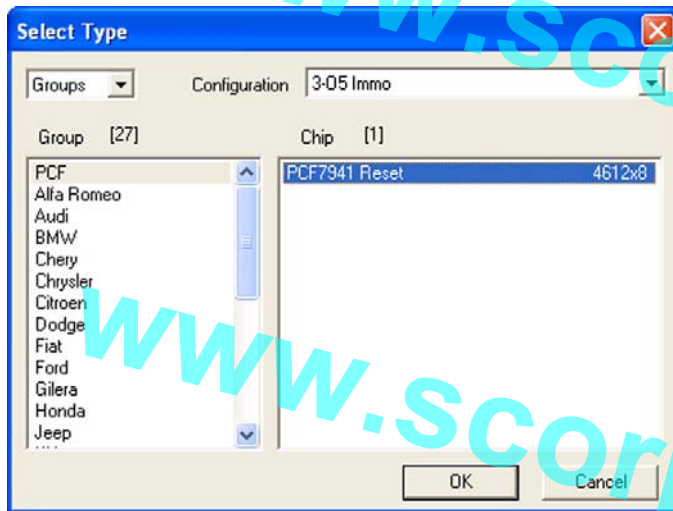
www.scorpio-lk.com

www.scorpio-lk.com

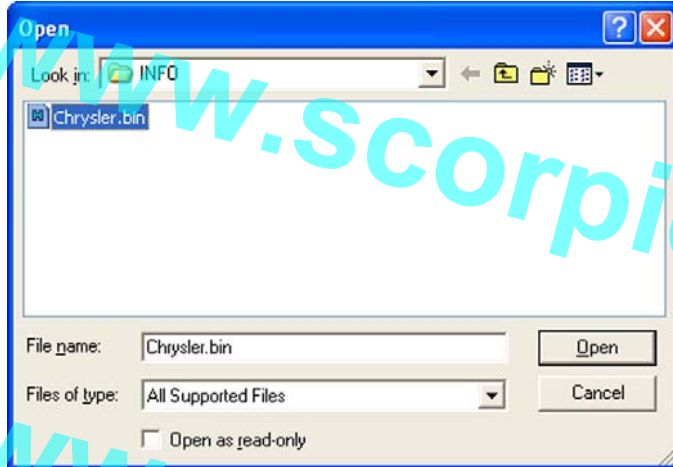
RESET

This feature resets PCF7941 and stores Chrysler remote functions. It means that it is possible to make Chrysler-compatible transponder from any PCF7941.

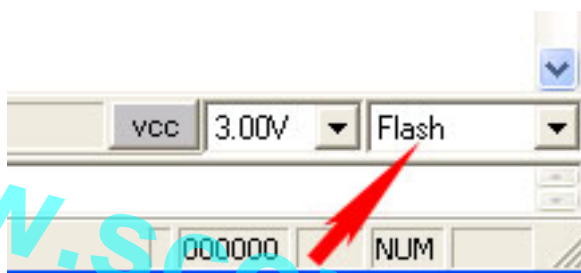
1. Click “Select Type” and choose “O5 immo”.
2. The left window: “PCF”
3. The right window: “PCF7941 Reset”



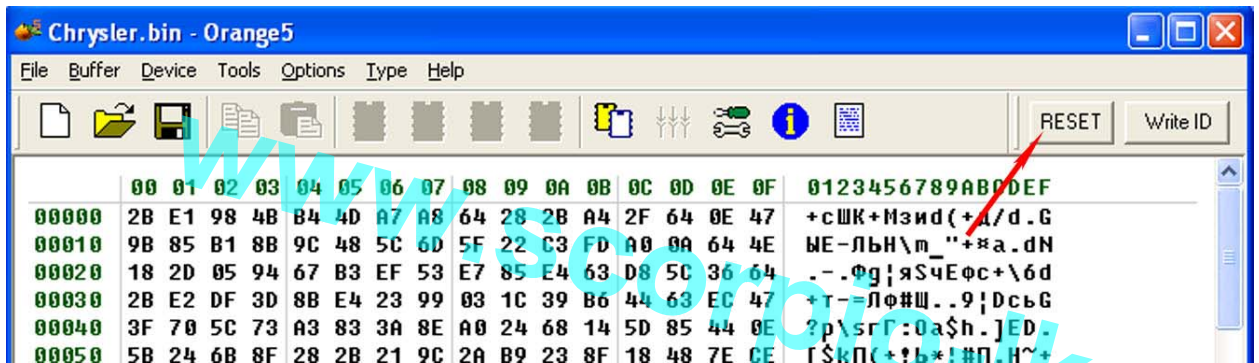
4. Click “File Open” and load file Chrysler.bin. The file can be found at ...orange5/HPL/O5IMMO/INFO.



5. Ensure the “FLASH” area selected in the right bottom corner:



6. Click “RESET” button:



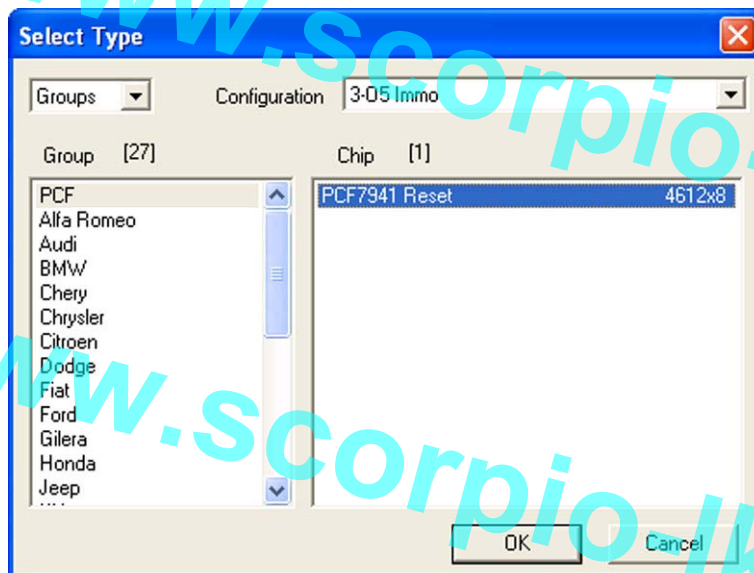
After RESET finishes the PCF7941 has status of a new unused transponder and may be used for programming to a car. The default crypto key is 4D494B52 : 4F4E.

Write ID

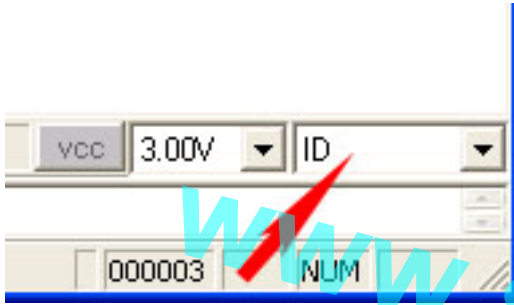
This feature is not compatible for using on Chrysler cars. Being applied to the Chrysler's key causes remote functions failure.

The feature may be applied to any locked PCF7941. It restores default settings and changes the page0 of a transponder.

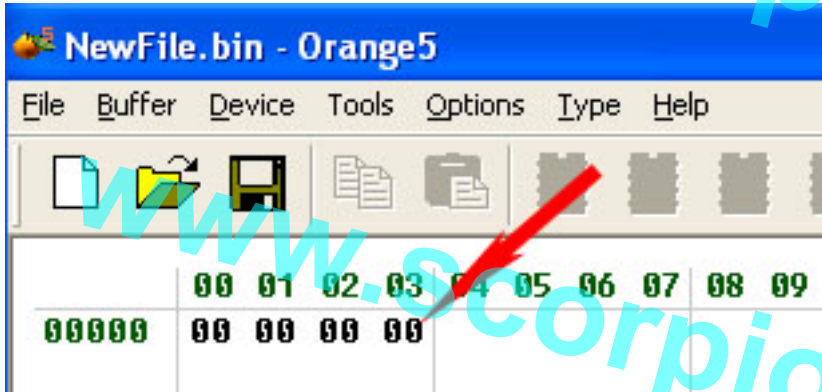
1. Click “Select Type” and choose “O5 immo”.
2. The left window: “PCF”
3. The right window: “PCF7941 Reset”



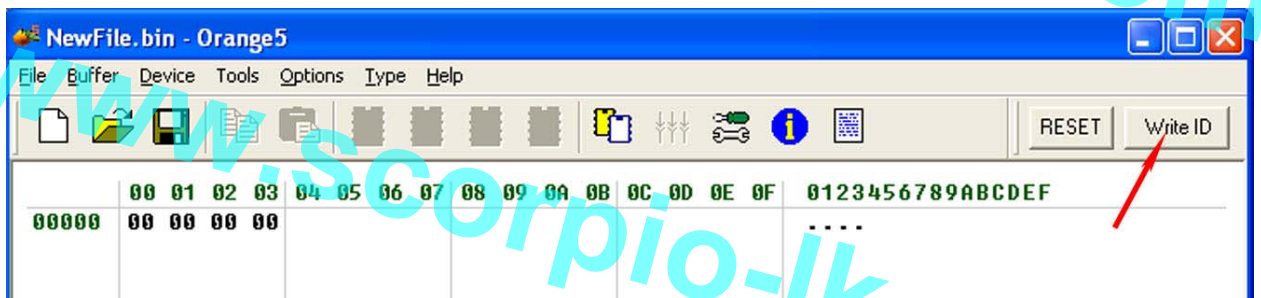
4. Ensure the "ID" area selected in the right bottom corner:



5. Type necessary value of ID (4 bytes):



6. Click "Write ID" button:



**Note*

There is a standard that requires certain value at the LSB of ID depending of the transponder type. The PCF7941 is marked with value "6" in the high nibble of LSB of ID, for example A4 8B C0 6B. The module can write any values, but it should be taken into account that some immobilizers check this value.