

NISSAN NP300 IMMO BYPASS

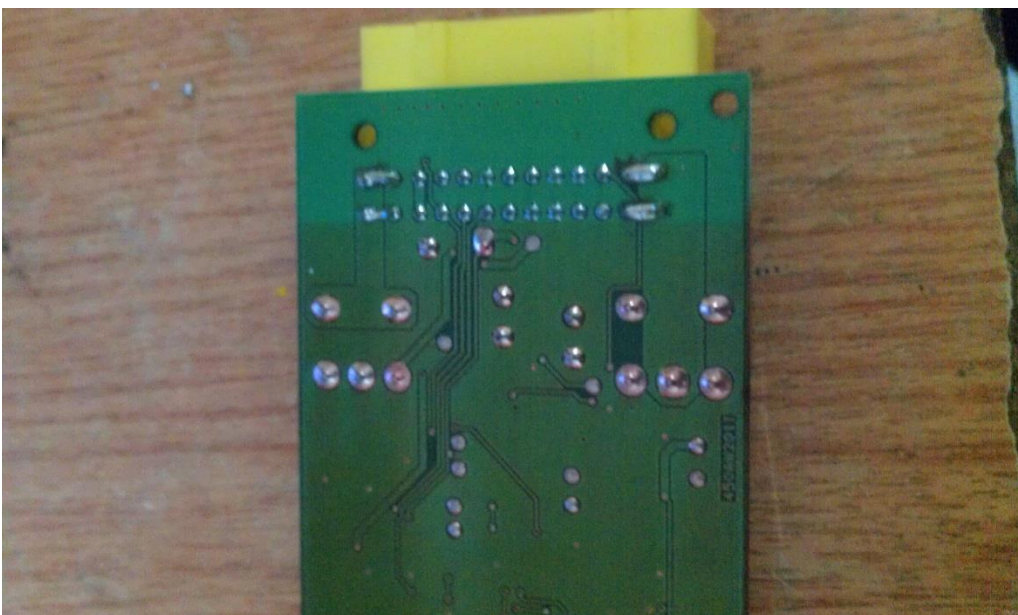
Surlock Immo Unit

PART ONE

1. Bridge pins A & B then D & C
2. Bridge pins E & F then G & H



3. Pic below shows you the pins that are bridge.



PART TWO

1. Turn board around and bridge pins 2 & 3 on Transistor no:2 refer to pic below
2. Once the mod is complete refit immo box to vehicle and start.
3. The immo light on the dash should stay solid.

