

Section : Body  
Electrical  
Ref. No. : BE-8012  
(Revised 2)  
Date : Apr., 2000  
Page : 1 of 16

Area Application : Europe, General, Australia

Model Name : LAND CRUISER

Model Code : UZJ100, FZJ105, HDJ100, HZJ105

**Subject : ENGINE IMMOBILISER SYSTEM**

This is inform you of the key code registration procedure for the engine immobiliser system.

- 2UZ-FE engine : Page 2 – 9
- Except 2UZ-FE engine : Page 10 – 16

The attached pages are to be used with the following manual.

Pub. No.	Publication Name
RM616E	Land Cruiser Chassis & Body Repair Manual

Production Effective :

Frame No.	Production Date
---	January, 1998

## REGISTRATION PROCEDURE (2UZ-FE)

### HINT:

In case of having lost all the already registered master keys, you are not able to do additional registration or deletion. Change the engine and ECT ECU and then must register the new key codes according to the following registration procedure of the automatic registration mode.

### 1. KEY REGISTRATION IN AUTOMATIC REGISTRATION MODE

#### (a) Registration of a new transponder key.

### HINT:

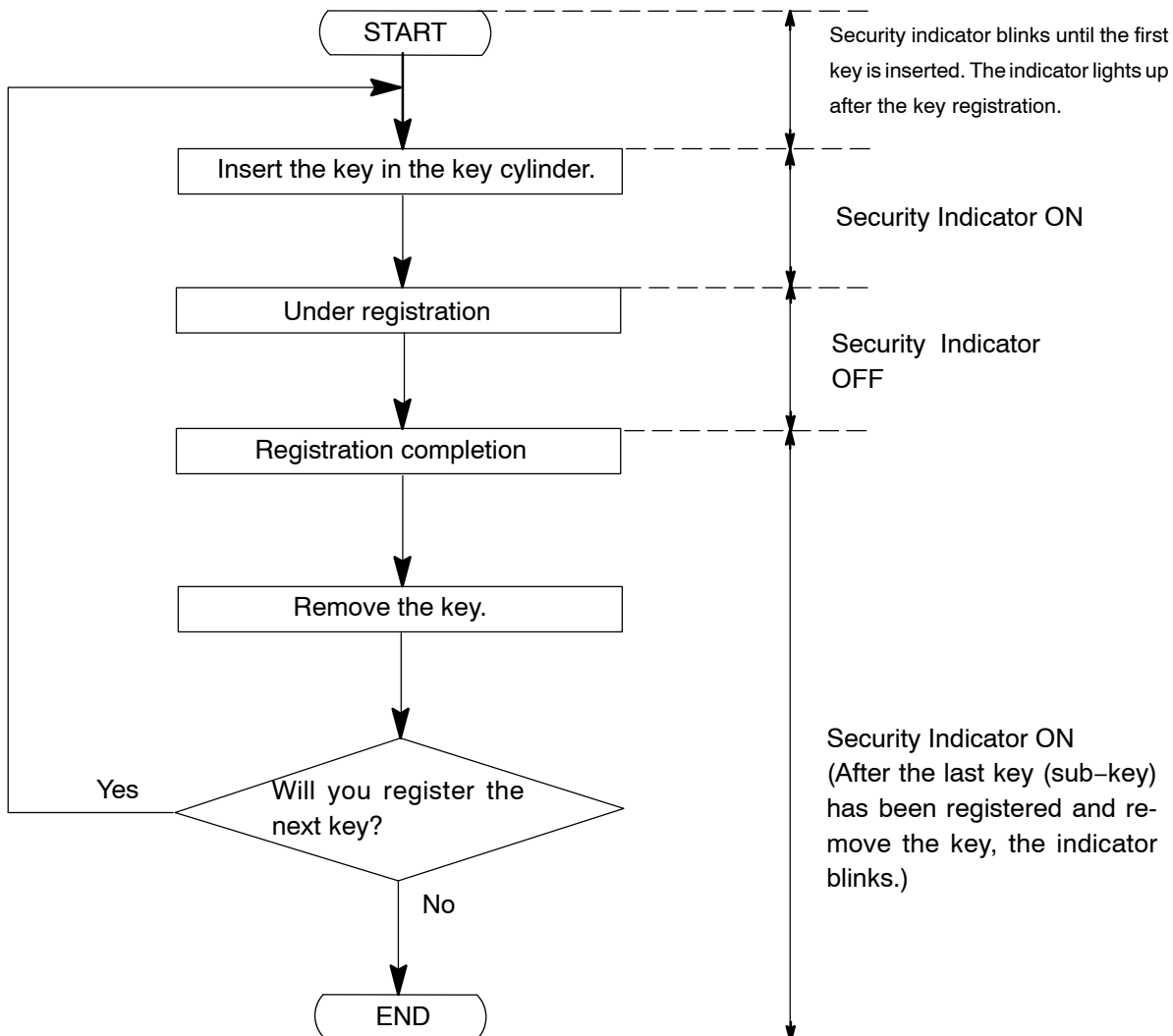
- This must be done when you install a new Engine and ECT ECU.
- The new Engine and ECT ECU is on the automatic key code registration mode. The already fixed number of key codes for this Engine and ECT ECU can be registered.

On this type of vehicle, up to 3 or 4 key codes can be registered.

3 key codes : General

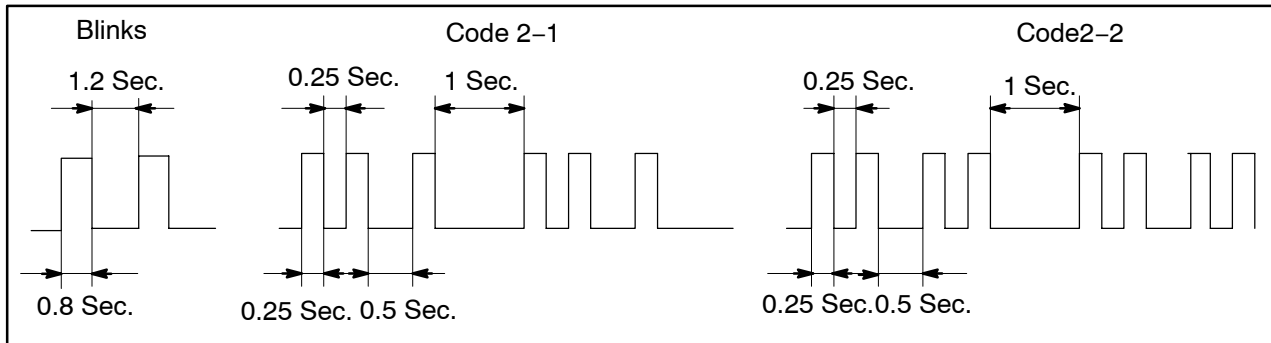
4 key codes : Europe, Australia

- In the automatic registration mode, the last key registered becomes sub-key.



## HINT:

- When a key is not inserted in the key cylinder on the automatic registration mode, the security indicator always lights on.
- When the immobiliser system operates normally and the key is pull out, the security indicator blinks.
- When key code registration could not be performed on the automatic registration mode, code 2-1 is output from the security indicator and when inserting the already registered key, code 2-2 is output.



## (b) Automatic registration mode completion

If completing the mode forcibly when more than 1 key code have been registered on the automatic registration mode, perform the following procedures.

After 1 more key code have been registered with master key, perform step (1) or (2) without pulling the key out or inserting the already registered key.

- (1) Depress and release brake pedal 5 times or more within 15 sec.
- (2) With the hand-held tester, require automatic registration mode completion.

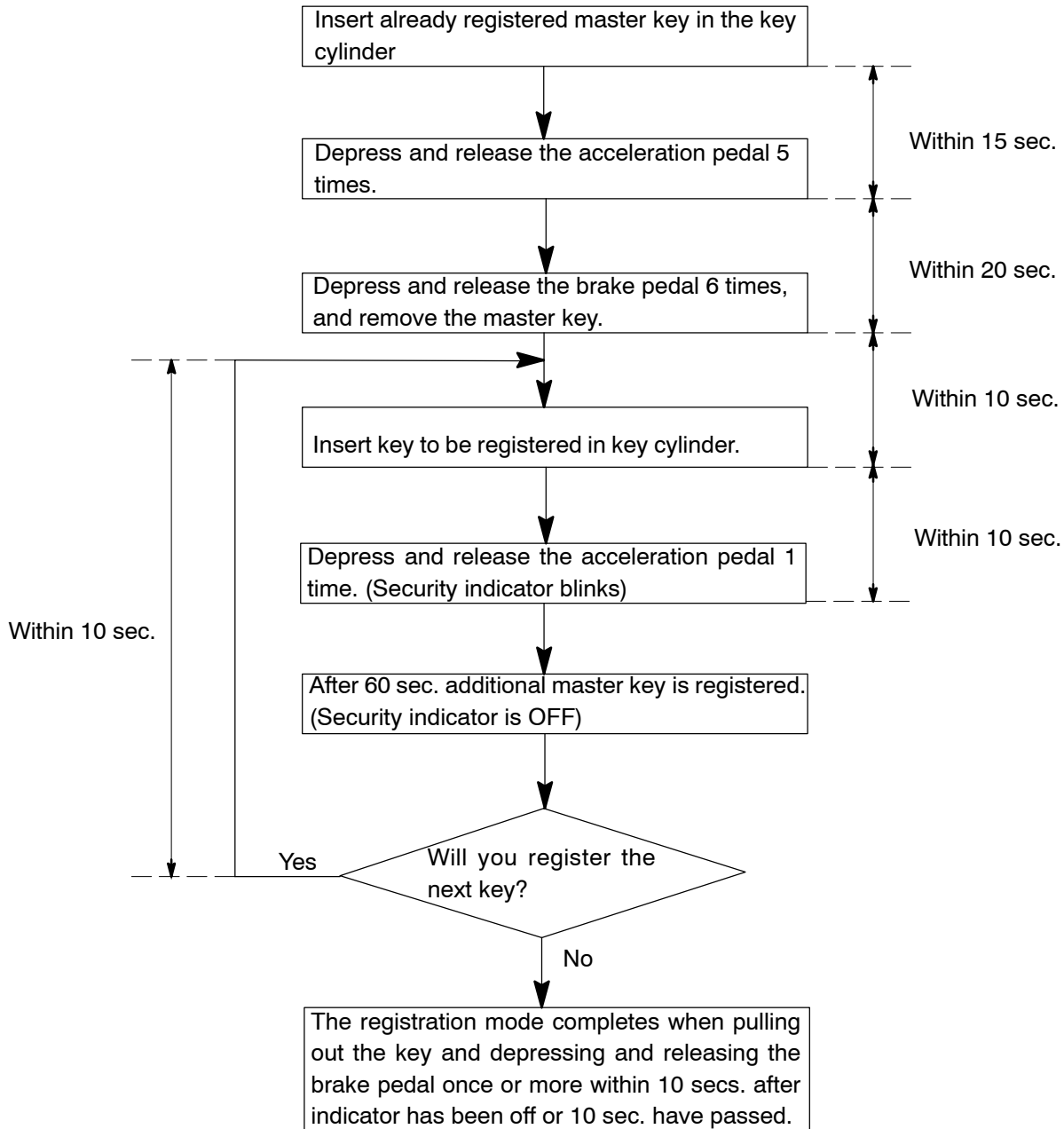
## 2. REGISTRATION OF ADDITIONAL MASTER KEY

There are 2 ways for registration of additional master key, one way is depressing brake pedal and acceleration pedal and the other way is using hand-held tester.

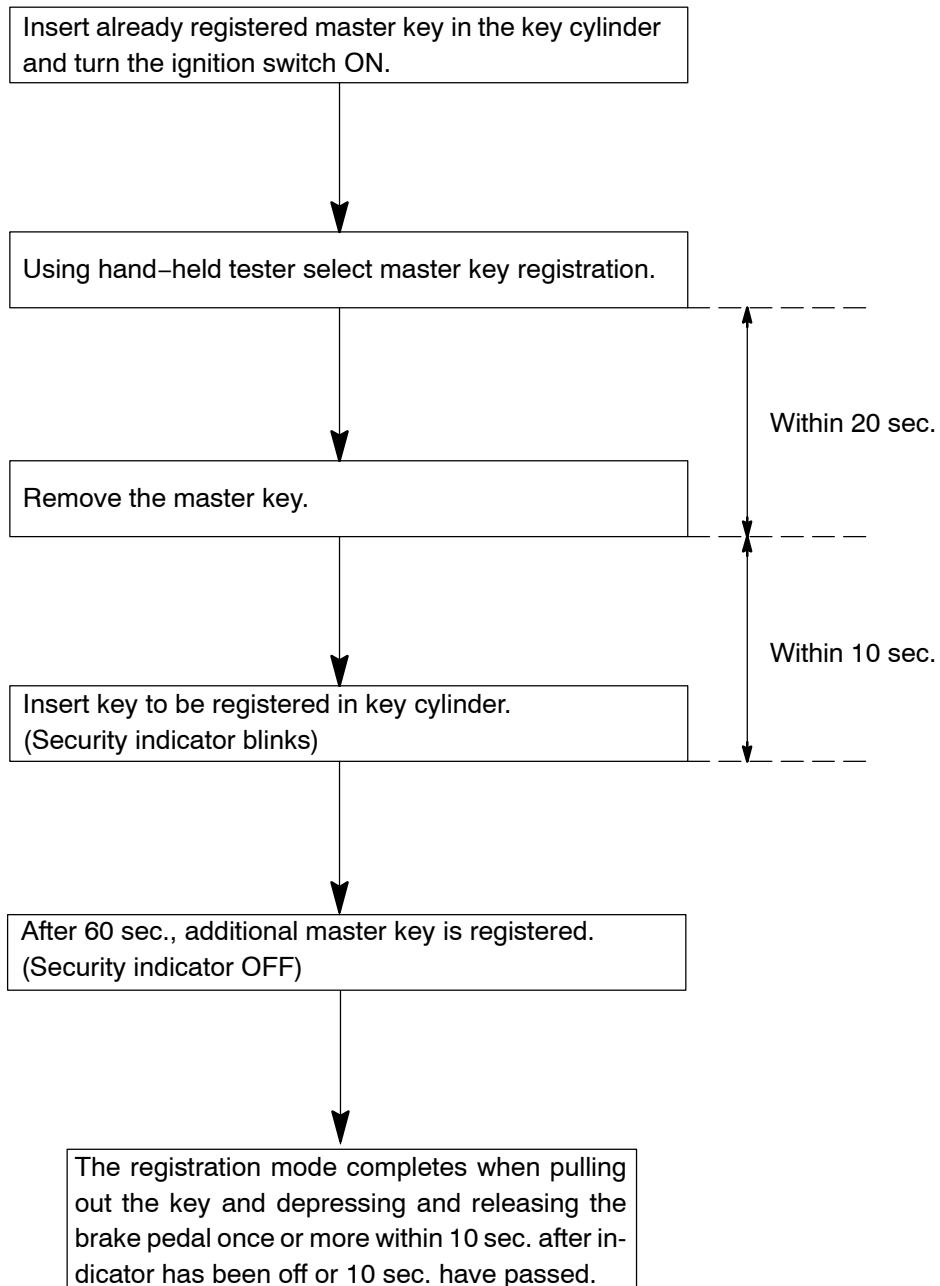
### HINT:

- It is possible to register up to 7 master key codes including the already registered key code.
- When any operation time described below is over, registration mode completes.
- When the next procedure is performed while the timer is working, the timer completes counting time, then next timer starts.
- When replacing "Ignition Cylinder Key Set" or "Lock Cylinder Set" and register according to the following procedure using the original master key. However, after the registration of the additional master key, as the original master key and the original sub-key is not necessary any more, so erase registration of those key codes.

(1) Depressing brake pedal and acceleration pedal:



(2) Using hand-held tester:



**HINT:**

Please follow the screen of the hand-held tester for more detailed procedure.

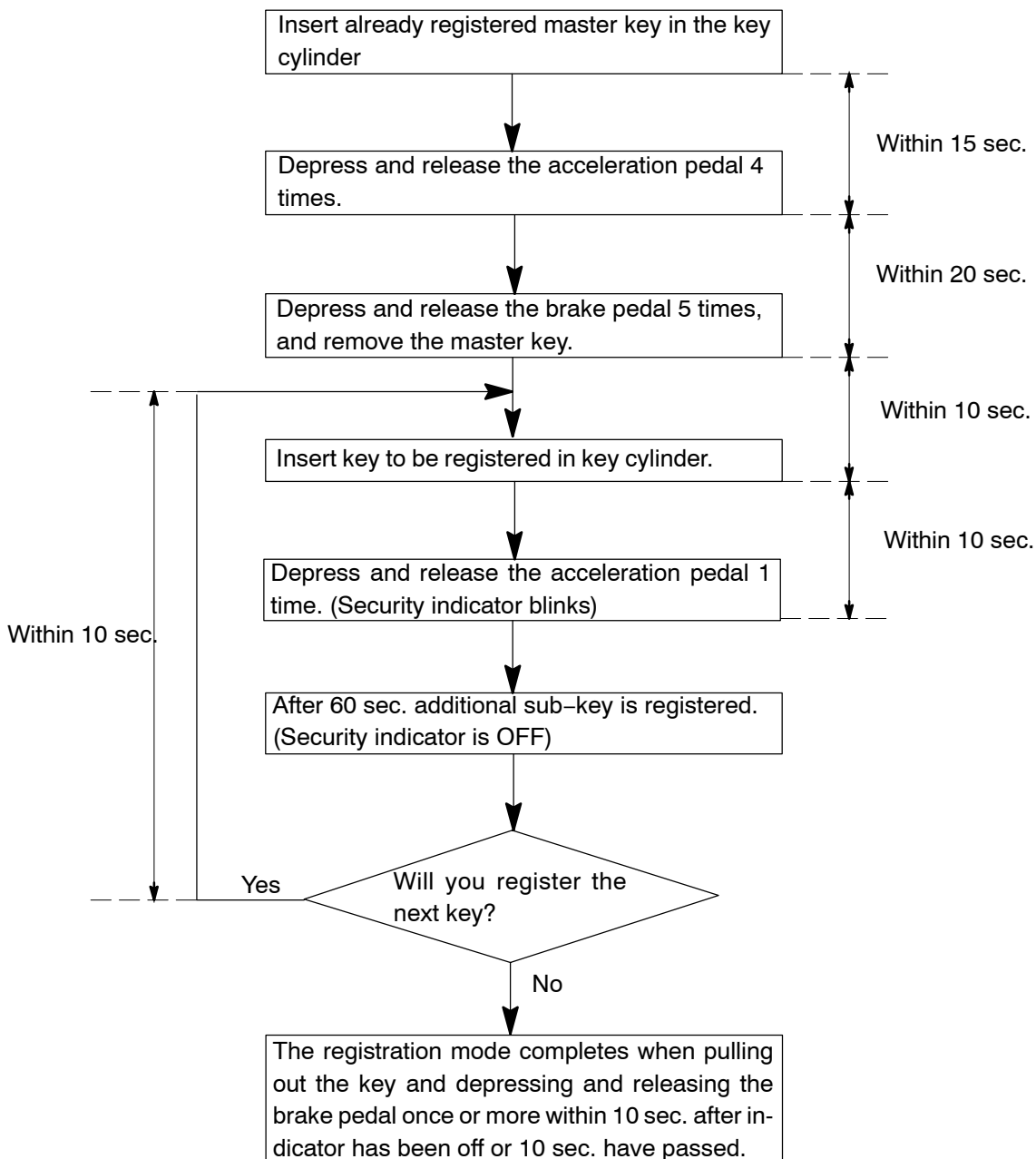
### 3. REGISTRATION OF ADDITIONAL SUB-KEY

There are 2 ways for registration of additional sub-key, one way is depressing brake pedal and acceleration pedal and the other way is using hand-held tester.

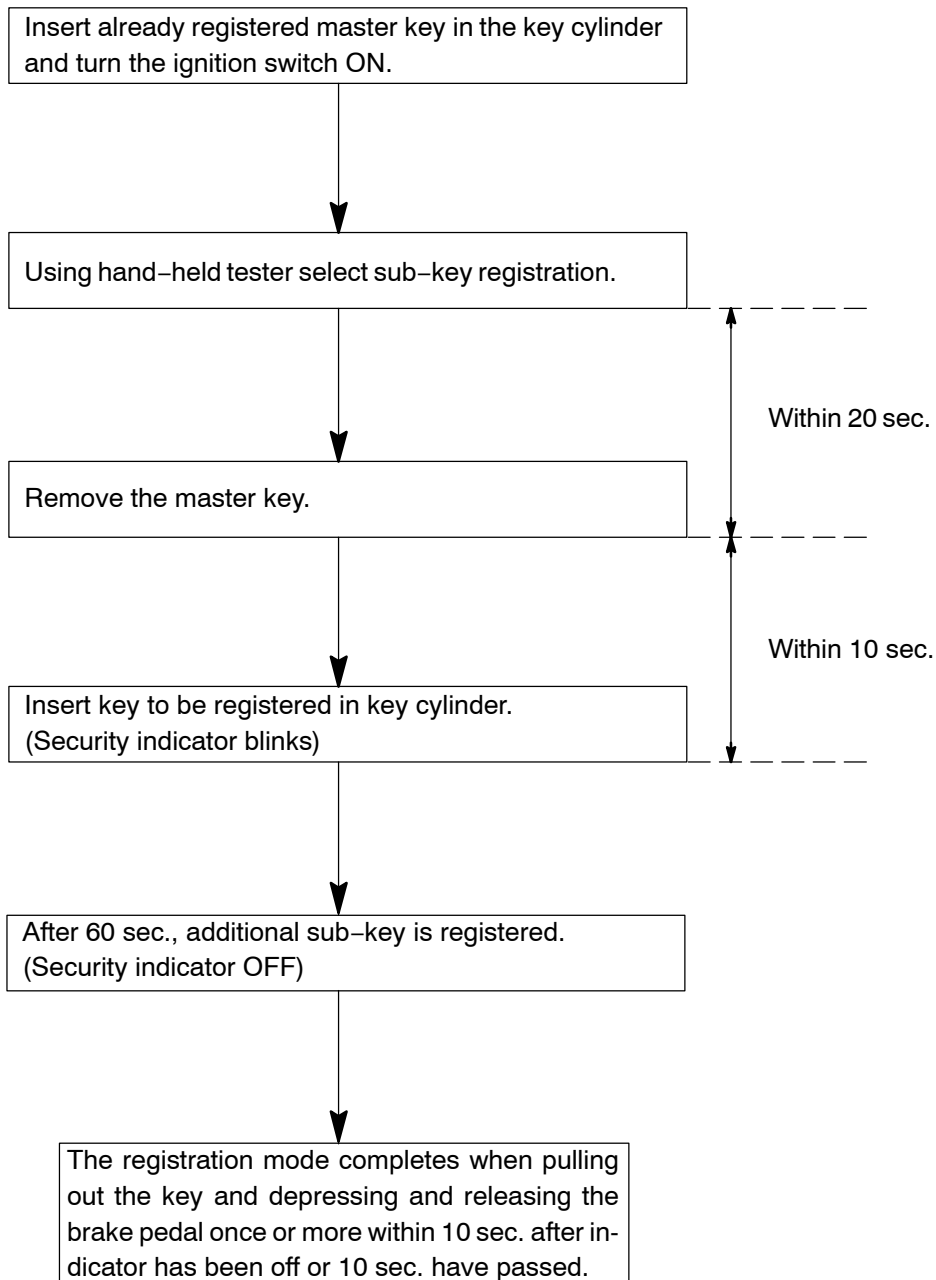
#### HINT:

- It is possible to register up to 3 sub-key codes including the already registered key code.
- When any operation time described below is over, registration mode completes.
- When the next procedure is performed while the timer is working, the timer completes counting time, then next timer starts.

#### (1) Depressing brake pedal and acceleration pedal:



(2) Using hand-held tester:



HINT:

Please follow the screen of the hand-held tester for more detailed procedure.

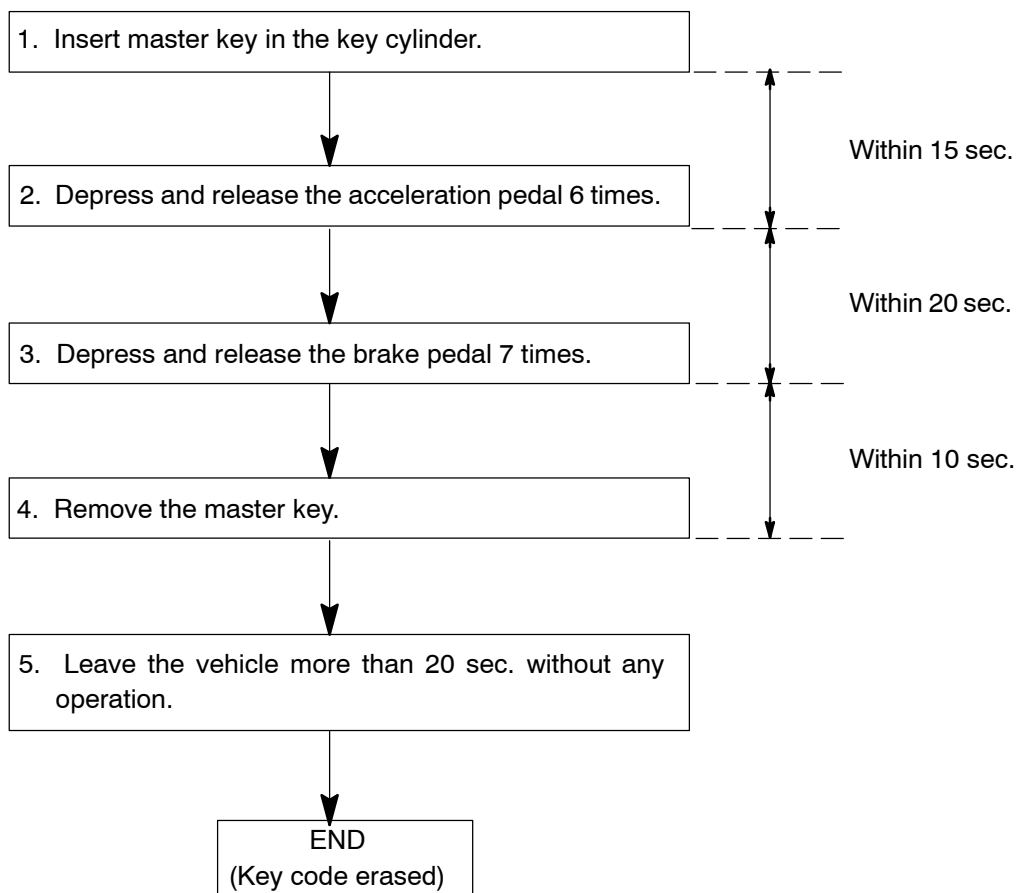
## 4. ERASURE OF TRANSPONDER KEY CODE

There are 2 ways for erasure of transponder key code, one way is depressing brake pedal and acceleration pedal and the other way is using hand-held tester.

### HINT:

- Delete all other master and sub-key codes leaving the master key code to use the operation. When using the key which was used before deletion, it is necessary to register the code again.
- When any operation time described below is over, registration mode completes.
- When the next procedure is performed while the timer is working, the timer completes counting time, then next timer starts.

(1) Depressing brake pedal and acceleration pedal:

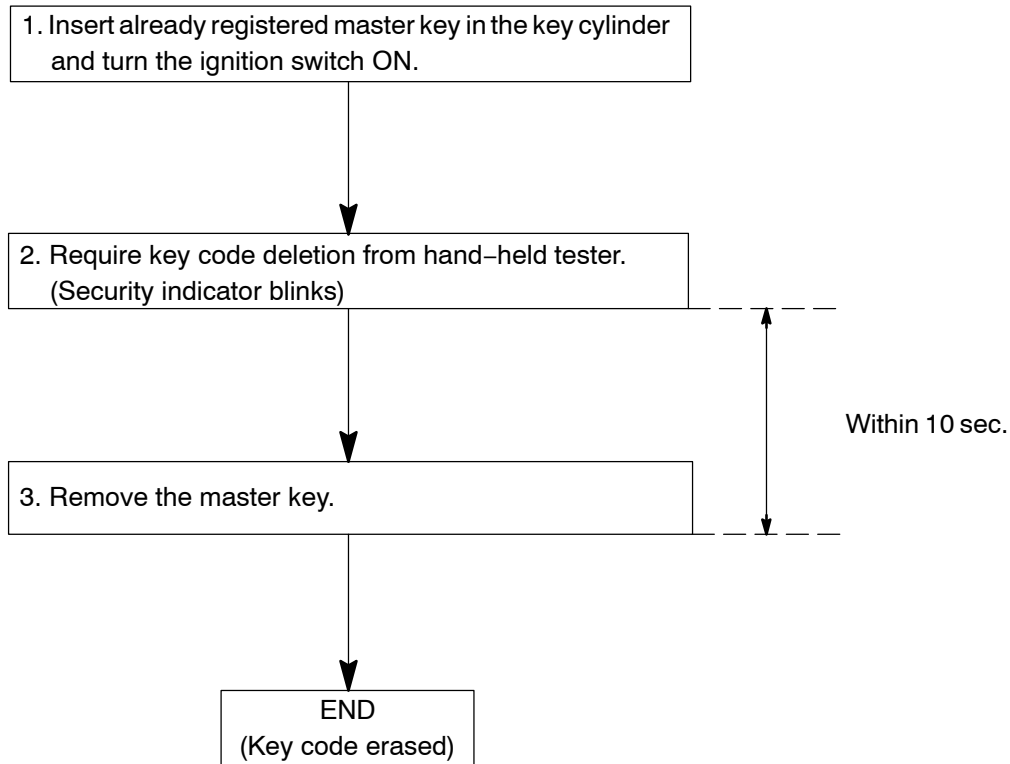


### HINT:

If the key cannot be pulled out within 30 sec. from the first brake depression in the step 3, the key code deletion is canceled.



(2) Using hand-held tester:



HINT:

- When the key cannot be pulled out in the step 3, key code deletion is canceled. (Security indicator is OFF.)
- Please follow the screen of the hand-held tester for more detailed procedure.

## REGISTRATION PROCEDURE (Except 2UZ-FE)

### HINT:

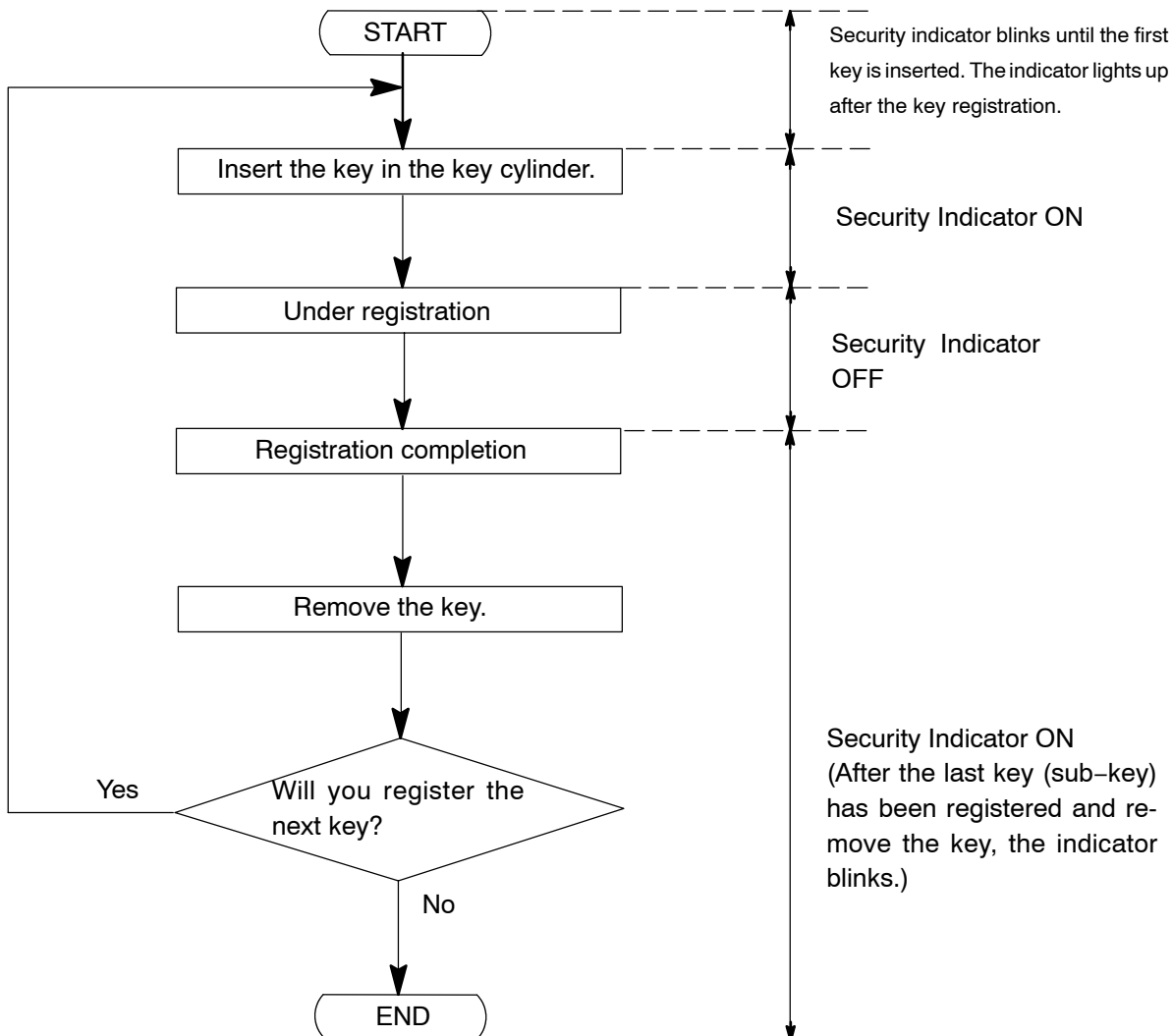
In case of having lost all the already registered master keys, you are not able to do additional registration or deletion. Change the transponder key computer and then must register the new key codes according to the following registration procedure of the automatic registration mode.

### 1. KEY REGISTRATION IN AUTOMATIC REGISTRATION MODE

#### (a) Registration of a new transponder key.

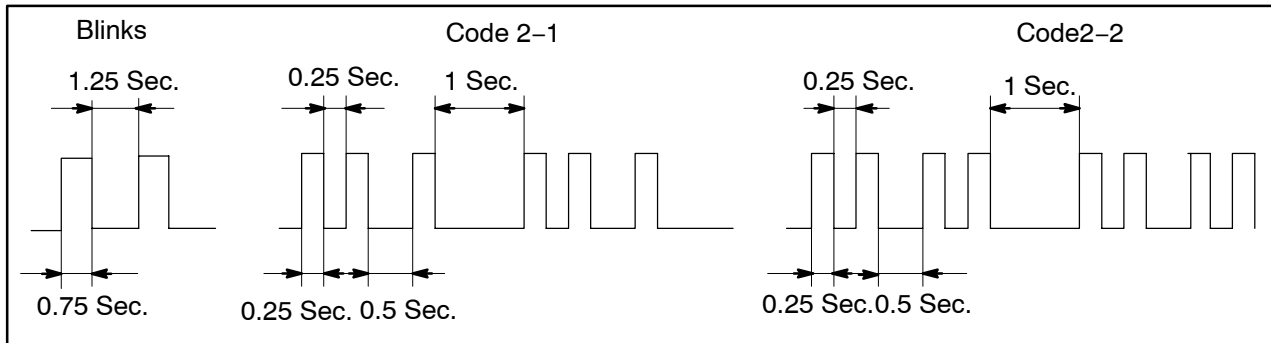
### HINT:

- This must be done when you install a new transponder key computer.
- It is possible to register up to 3 or 4 key codes.
  - 3 key codes : General
  - 4 key codes : Europe, Australia
- In the automatic registration mode, the last key registered becomes sub-key.



**HINT:**

- When a key is not inserted in the key cylinder on the automatic registration mode, the security indicator always lights on.
- When the immobiliser system operates normally and the key is pull out, the security indicator blinks.
- When key code registration could not be performed on the automatic registration mode, code 2-1 is output from the security indicator and when inserting the already registered key, code 2-2 is output.



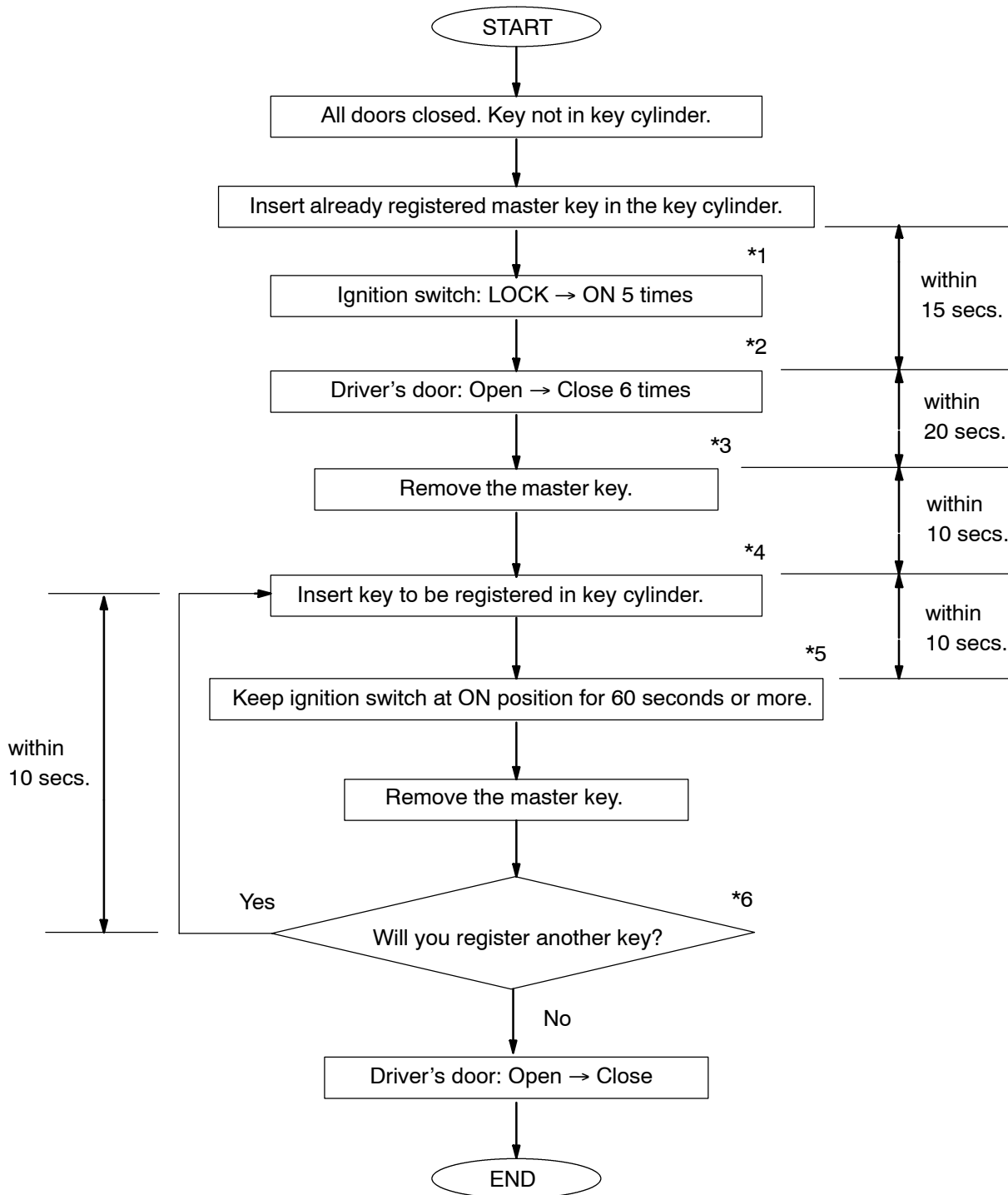
(b) Automatic registration mode completion

If completing the mode forcibly when more than 1 key code have been registered on the automatic registration mode, perform the following procedures.

After 1 more key code have been registered with master key, turn the ignition switch LOCK → ON 5 times within 10 secs. of inserting the already registered key or without pulling the key out.

## 2. REGISTRATION OF ADDITIONAL MASTER KEY

Do this operation to register an additional master key.



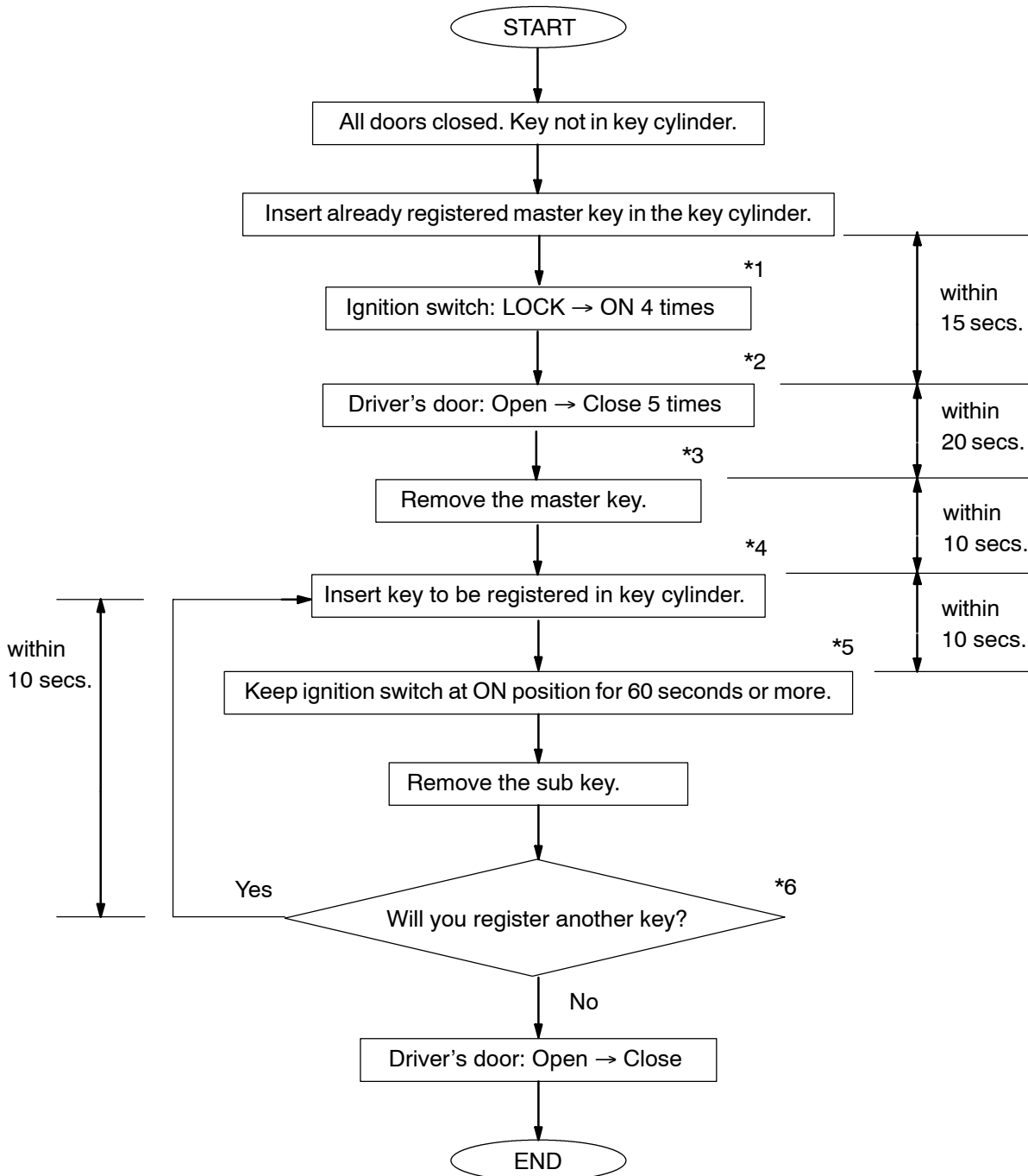
- \*1: Turn the ignition switch LOCK → ON 5 times within 15 secs. of inserting the master key in the key cylinder. The ignition switch must finally remain in position ON, or the registration will not be carried out, then go on to the next operation.
- \*2: Open and close the driver's door the first time within 15 secs. of inserting the master key in the key cylinder. Then open and close the driver's door another 5 times within 20 secs. of closing the driver's door the first time.
- \*3: Remove the master key from the ignition switch within 20 secs. of closing the driver's door the first time.
- \*4: Insert the key to be registered in the key cylinder within 10 secs. of removing the master key.
- \*5: Turn the ignition switch LOCK → ON within 10 secs. of inserting the key.
- \*6: If you are to register another key, insert the next key within 10 secs. of removing the previous key.

**HINT:**

- It is possible to register up to 4 master key codes including the already registered key code.
- When any operation time described below is over, registration mode completes.
- When the next procedure is performed while the timer is working, the timer completes counting time, then next timer starts.

### 3. ADDITIONAL REGISTRATION OF SUB KEY

Do this operation to register an additional sub key.



- \*1: Turn the ignition switch LOCK → ON 4 times within 15 secs. of inserting the master key in the key cylinder. The ignition switch must finally remain in position ON, or the registration will not be carried out, then go on to the next operation.
- \*2: Open and close the driver's door the first time within 15 secs. of inserting the master key in the key cylinder. Then open and close the driver's door another 4 times within 20 secs. of closing the driver's door the first time.
- \*3: Remove the master key from the ignition switch within 20 secs. of closing the driver's door the first time.
- \*4: Insert the key to be registered in the key cylinder within 10 secs. of removing the master key.
- \*5: Turn the ignition switch LOCK → ON within 10 secs. of inserting the key.
- \*6: If you are to register another key, insert the next key within 10 secs. of removing the previous key.

**HINT:**

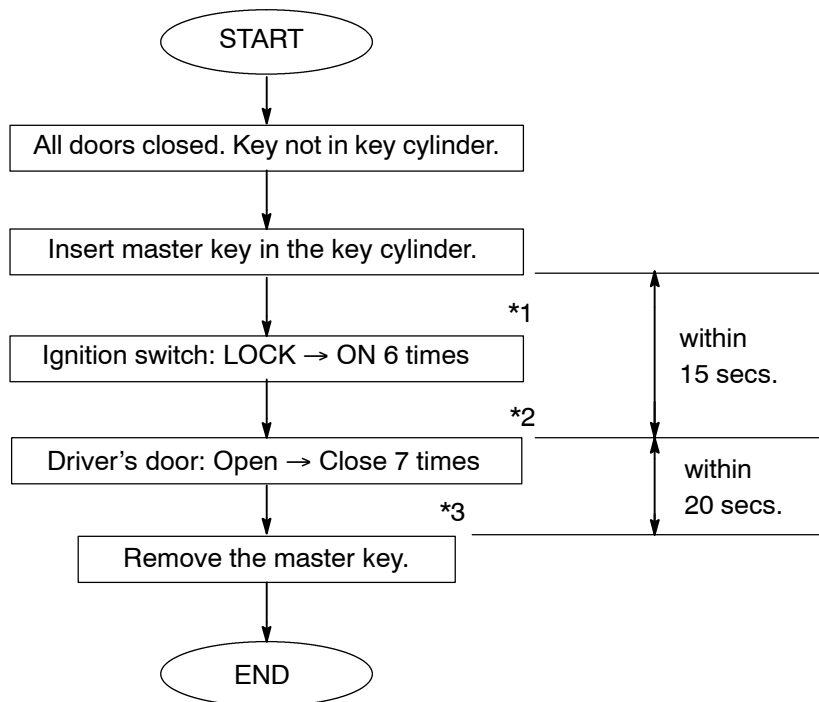
- It is possible to register up to 2 sub-key codes including the already registered key code.
- When any operation time described below is over, registration mode completes.
- When the next procedure is performed while the timer is working, the timer completes counting time, then next timer starts.

## 4. ERASURE OF TRANSPONDER KEY CODE

Do this operation to erase transponder key registration from the transponder key computer.

### HINT:

Delete all other master and sub-key codes leaving the master key code to use the operation. When using the key which was used before deletion, it is necessary to register the code again.



- \*1: Turn the ignition switch LOCK → ON 6 times within 15 secs. of inserting the master key in the key cylinder.
- \*2: Open and close the driver's door the first time within 15 secs. of inserting the master key in the key cylinder. Then open and close the driver's door another 6 times within 20 secs. of closing the driver's door the first time.
- \*3: Remove the master key from the ignition switch within 20 secs. of closing the driver's door the first time.

### HINT:

- When any operation time described below is over, registration mode completes.
- When the next procedure is performed while the timer is working, the timer completes counting time, then next timer starts.